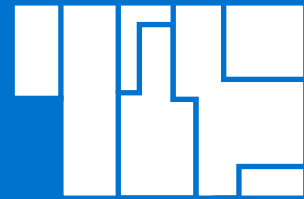


# GIVE ME LIBERTY!!

THE INCOMPARABLE LIBERTY THEATER AT 234 WEST 42ND STREET



234 W 42<sup>ND</sup>  
STREET

LIBERTY THEATER

# SPACE DETAILS

AVAILABLE SPACES	
	AVAILABLE SF
FOURTH LEVEL	530 SF
SECOND BALCONY LEVEL	(A) 3,174 SF
	(B) 1,452 SF
FIRST BALCONY LEVEL	7,704 SF
STREET LEVEL	10,600 SF
LOWER LEVEL	2,235 SF
<b>TOTAL</b>	<b>25,695 SF</b>

## POSSESSION:

Immediate

## LEASE TYPE:

Direct

## ASKING RENTS:

Upon Request

## COMMENTS

### Opportunity:

- The iconic, incomparable, irreplaceable Liberty Theater.
- A total of 25,695 square feet of space on four levels, including Lower Level/Back-of House; the Street Level which includes the Liberty Diner, Theater Seating and Main Stage; the First Balcony Level which includes the balcony itself, a full Mezzanine and separate office/support space; and the Second Balcony Level.

### Location:

- Mid-block on the south side of 42nd Street between Seventh and Eighth Avenues, in the heart of New York's Theater District.
- 42nd Street is a world-famous thoroughfare and is a brand unto itself. It is also among the most heavily pedestrian-trafficked cross-streets in Manhattan.

### Frontage & Signage:

- Incredible visibility and signage via the existing marquee – 90 total feet of wrap-around marquee frontage on West 42nd Street.
- Additional façade signage may be possible.
- Also possible (subject to EDC & HPC approval) to activate the 41st Street façade of the Theater.







  
234 W 42<sup>ND</sup>  
STREET  
LIBERTY THEATER



LIBERTY THEATER MARQUEE



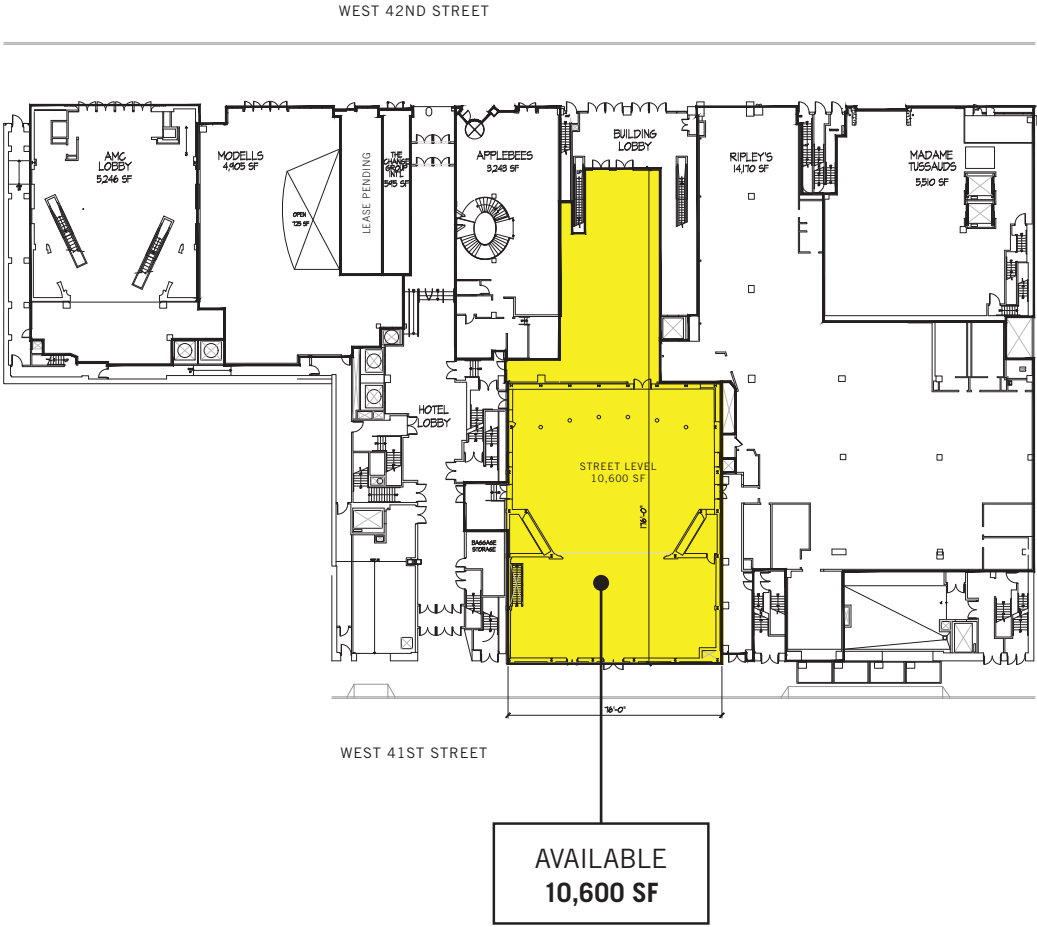
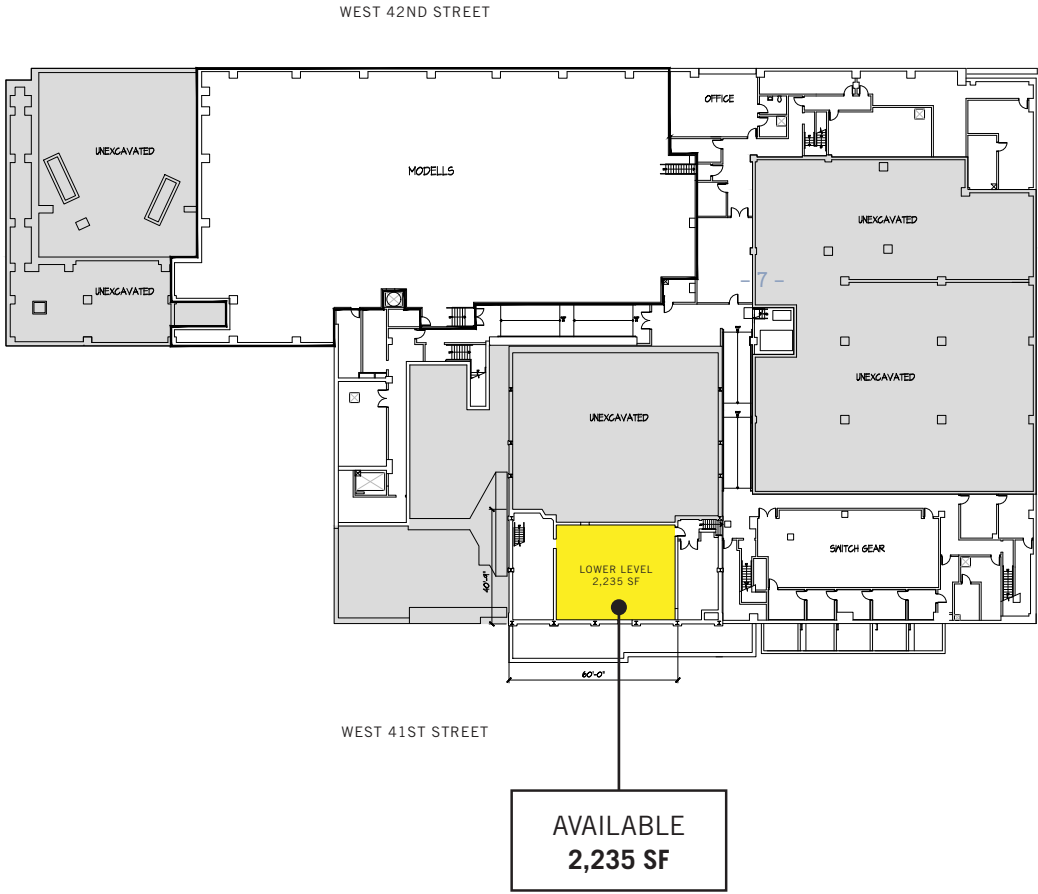
# FLOOR PLANS

**LOWER LEVEL**

■ AVAILABLE      **2,235 SF**

**STREET LEVEL**

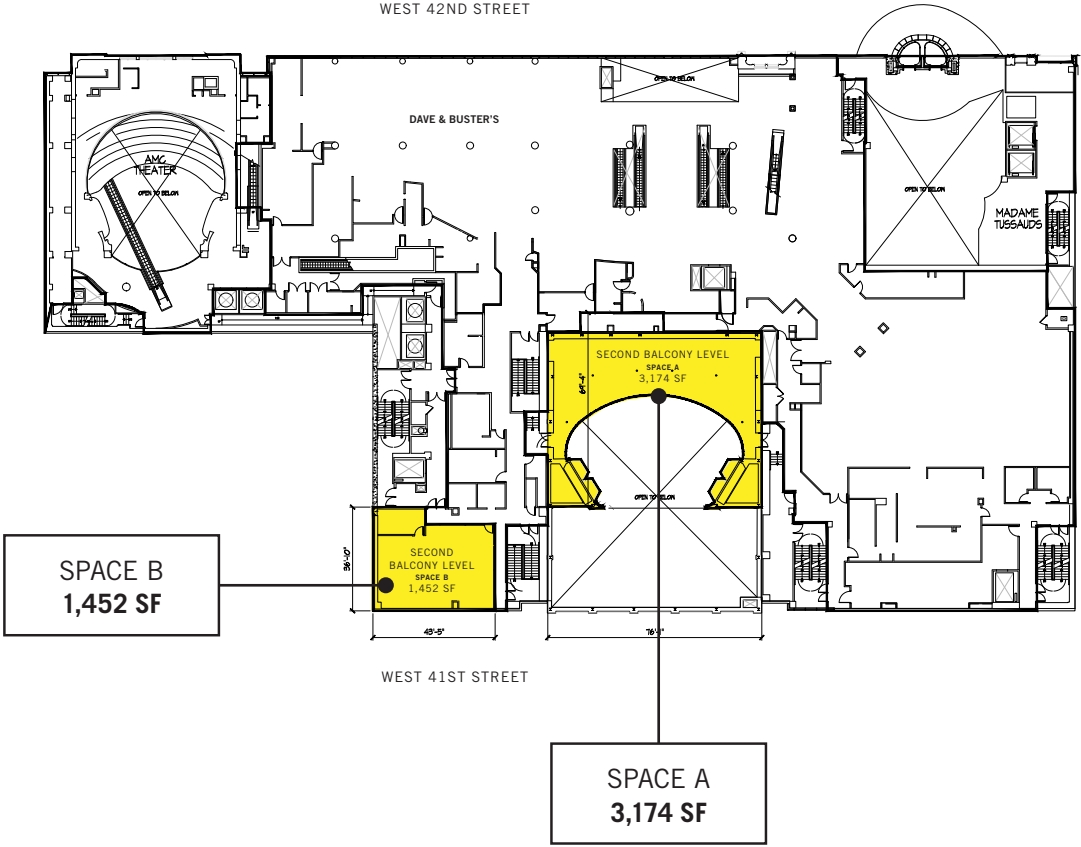
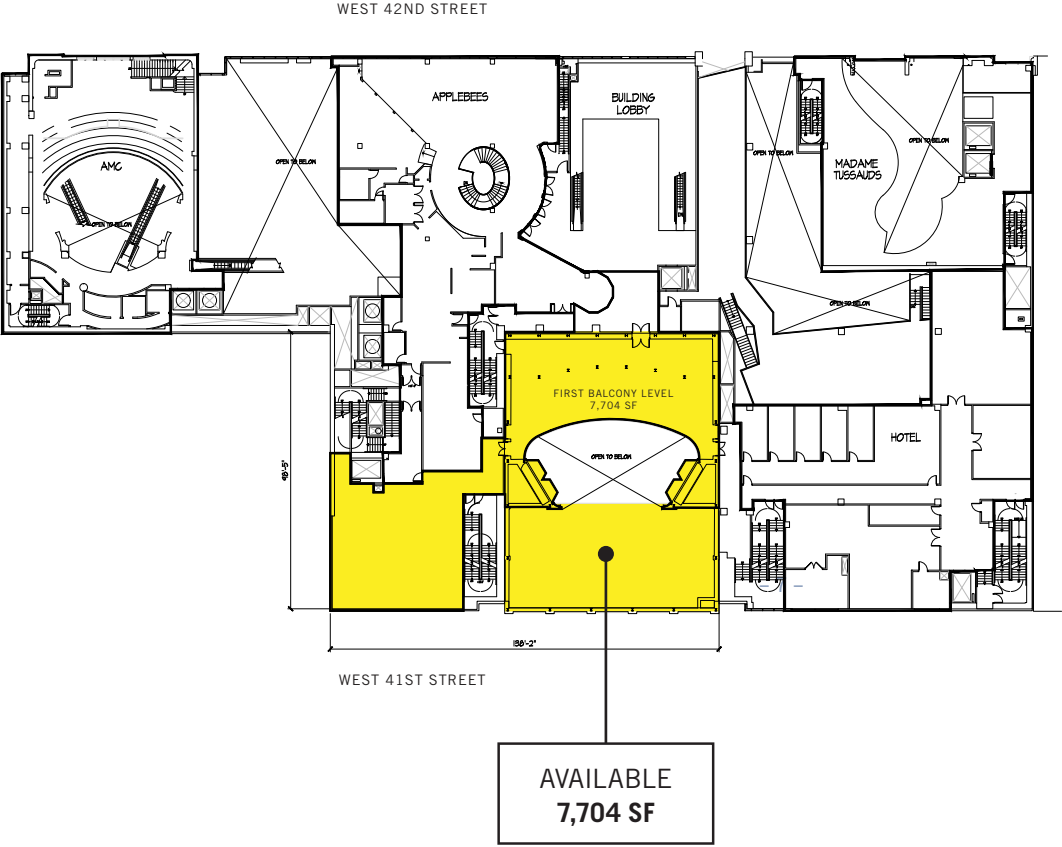
■ AVAILABLE      **10,600 SF**



# FLOOR PLANS

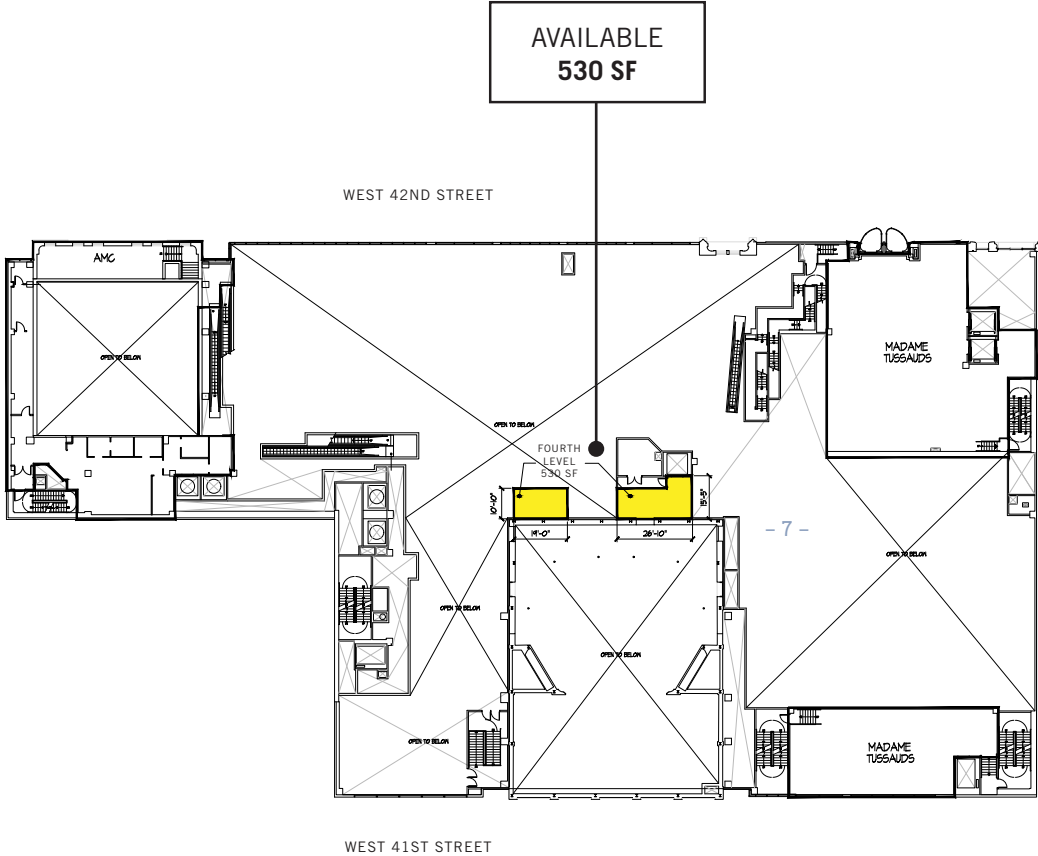
**FIRST BALCONY LEVEL**  
 ■ AVAILABLE      **7,704 SF**

**SECOND BALCONY LEVEL**  
 ■ SPACE A      **3,174 SF**  
 ■ SPACE B      **1,452 SF**



# FLOOR PLANS

**FOURTH LEVEL**  
■ AVAILABLE      530 SF



# TIMES SQUARE STATS / AREA RETAILERS



1/2 BLOCK FROM  
PORT AUTHORITY  
WITH ITS  
**250,000**  
DAILY VISITORS



UP TO  
**450,000**  
DAILY  
PEDESTRIANS

**54**  
MILLION  
ANNUAL VISITORS



LOCATED ADJACENT  
TO NATION'S  
TOP 2  
MOVIE THEATERS  
(AMC & REGAL)



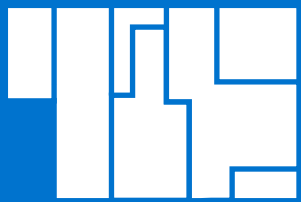
IMMEDIATE PROXIMITY  
TO THE BUSIEST  
SUBWAY STATION WITH ITS  
**64,815,739**  
ANNUAL RIDERSHIP



NEARLY  
**\$10,000,000**  
OF DAILY CONSUMER  
SPENDING  
EXCLUDING HOTELS







234 W 42<sup>ND</sup>  
STREET

LIBERTY THEATER

PLEASE CONTACT US FOR RETAIL LEASING INQUIRIES:

**Alan Schmerzler**

212 841 5930

[alan.schmerzler@cushwake.com](mailto:alan.schmerzler@cushwake.com)

**Ian Lerner**

212 841 5948

[ian.lerner@cushwake.com](mailto:ian.lerner@cushwake.com)

**Diana D. Boutross**

212 841 5097

[diana.boutross@cushwake.com](mailto:diana.boutross@cushwake.com)

**Abie Dwek**

212 841 7552

[abie.dwek@cushwake.com](mailto:abie.dwek@cushwake.com)