

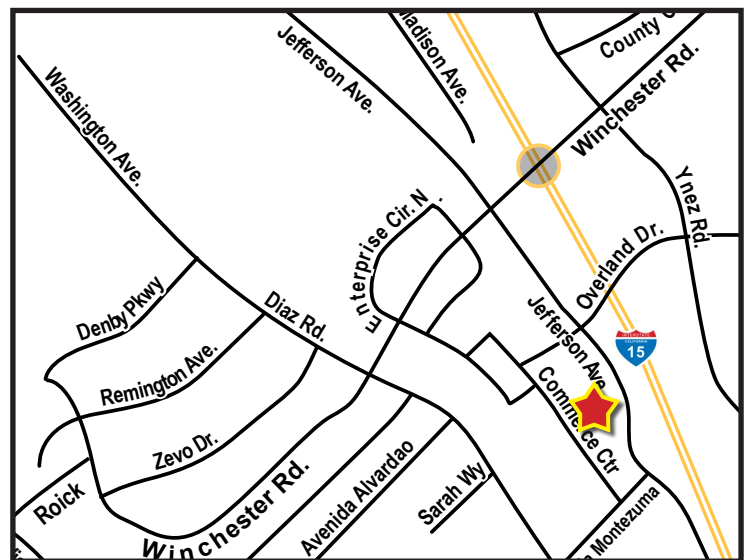
FOR LEASE JEFFERSON COURT

27570, 27574 & 27576 Commerce Center Drive - Temecula, CA



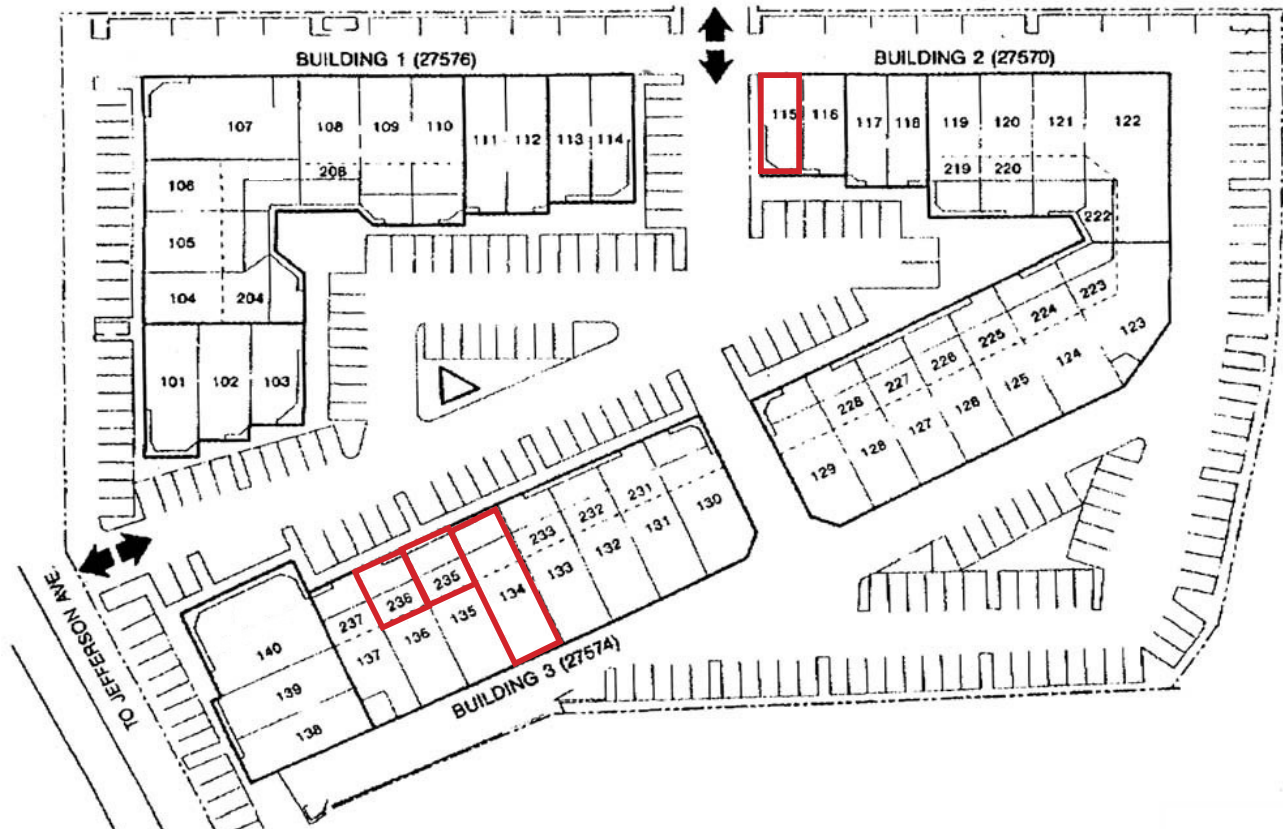
PROPERTY FEATURES:

- ◆ Improved Second floor office Suites starting at ± 750 Sq. Ft.
- ◆ Improved Flex Industrial and Commercial Suites from starting at $\pm 1,062$ Sq. Ft.
- ◆ Centrally Located Within the Temecula Business District (Conveniently Located Between Ranch California Rd & Winchester Rd)
- ◆ Accessible to I-15 Freeway
- ◆ Competitive Rates
- ◆ A range of floorplans to choose from
- ◆ Jefferson Uptown Zoning



For More Information, Please Contact:
LAURA MENDEN | (951) 445-4509
lmenden@lee-associates.com
DRE Lic.#00841606



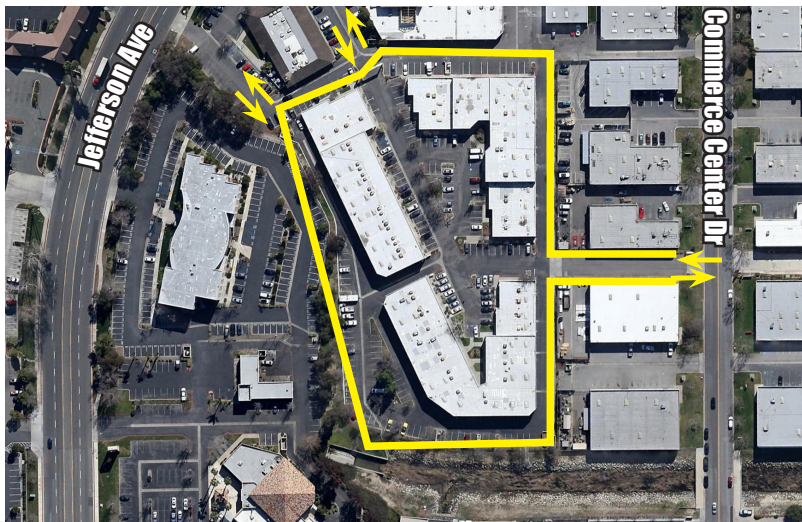


AVAILABILITY

BLDG.	SUITE	SQ. FT.	RATE/SF	DESCRIPTION
1ST FLOOR				
27570	115	±1,062	\$1.20	Large front office/showroom, back work area, roll-up door 10 x 10, restroom Do Not Disturb Current Tenant
27574	134	±1,777	\$0.95	Large from office, small private office, semi private office area, restroom, warehouse, roll-up door
2ND FLOOR				
27574	235	±750	\$1.10	Large reception, 2 offices, restroom
27574	236	±750	\$1.10	Large reception, 2 offices, restroom

Rates are Modified Gross.

Rev. 03/28/18



For More Information, Please Contact:
LAURA MENDEN | (951) 445-4509
 lmenden@lee-associates.com
 DRE Lic.#00841606