



# The One

110 1st Street, Jersey City, New Jersey

## Availabilities

- +/- 885 SF

## Delivery

- Immediate

## Site Description

- Small shop space available in the heart of Downtown Jersey City
- Located at the base of the iconic residential building known as The One with over 400 residential units above, and directly adjacent to the Jersey City Light Rail Station
- Strong incomes of over \$127,000 annually with over 30,000 residents within ½ mile from the site
- Surrounded by new development with several thousand residential units in the pipeline

## Market Activators

- Grove Street Path Station
- ShopRite
- Newport Centre Mall
- Hudson Exchange
- Harsimus Cove Light Rail Station

## Demographics

Radius	Population	Population Change	Median Age	Median HH Income
.5 Mile	30,500	115.9%	33.3	\$127,093
1 Mile	66,346	98.9%	33.5	\$119,975
1.5 Mile	145,845	62.6%	33.7	\$113,829
2 Mile	311,007	40.1%	33.6	\$102,442

## Retail for Lease - Contact

Jason Pierson  
Ph. 732-707-6900 x1  
jason@piersonre.com

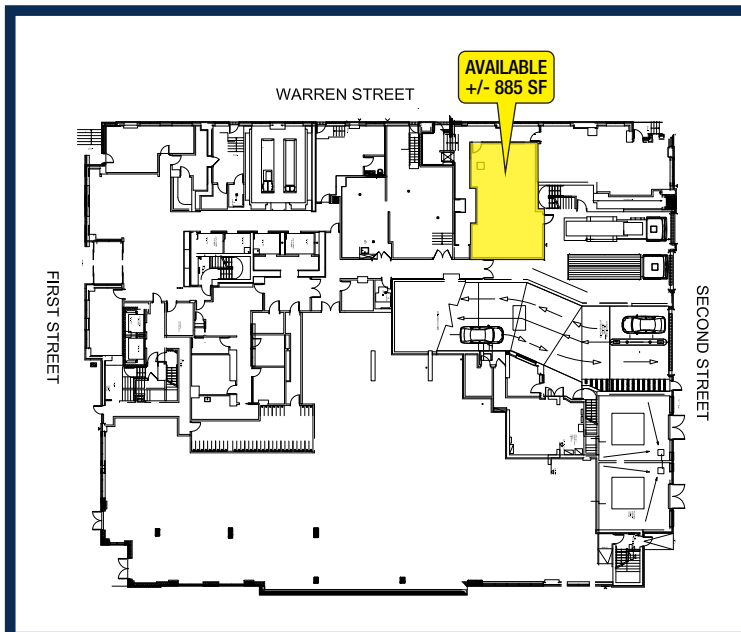
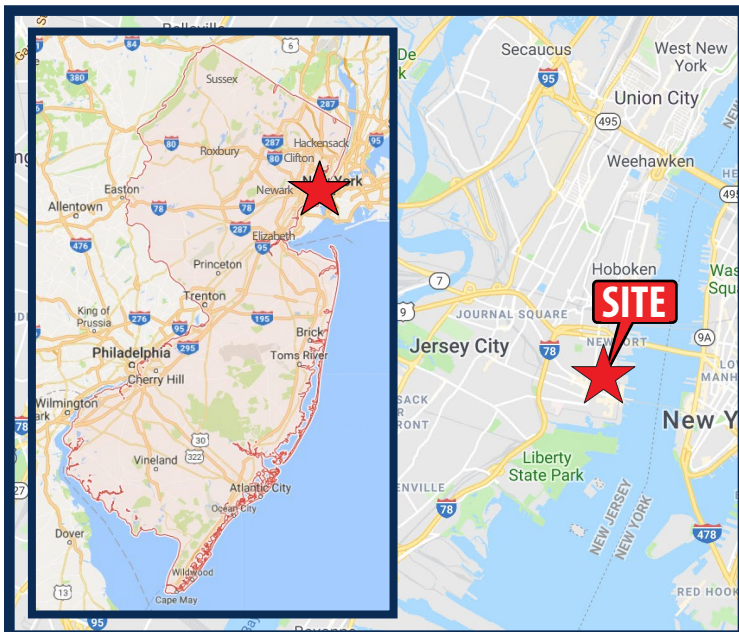
Ryan Starkman  
Ph. 732-707-6900 x5  
ryan@piersonre.com

**PIERSON**  
COMMERCIAL REAL ESTATE®



# The One

## 110 1st Street, Jersey City, New Jersey



## Retail for Lease - Contact

Jason Pierson  
Ph. 732-707-6900 x1  
jason@piersonre.com

Ryan Starkman  
Ph. 732-707-6900 x5  
ryan@piersonre.com

**PIERSON**  
COMMERCIAL REAL ESTATE.