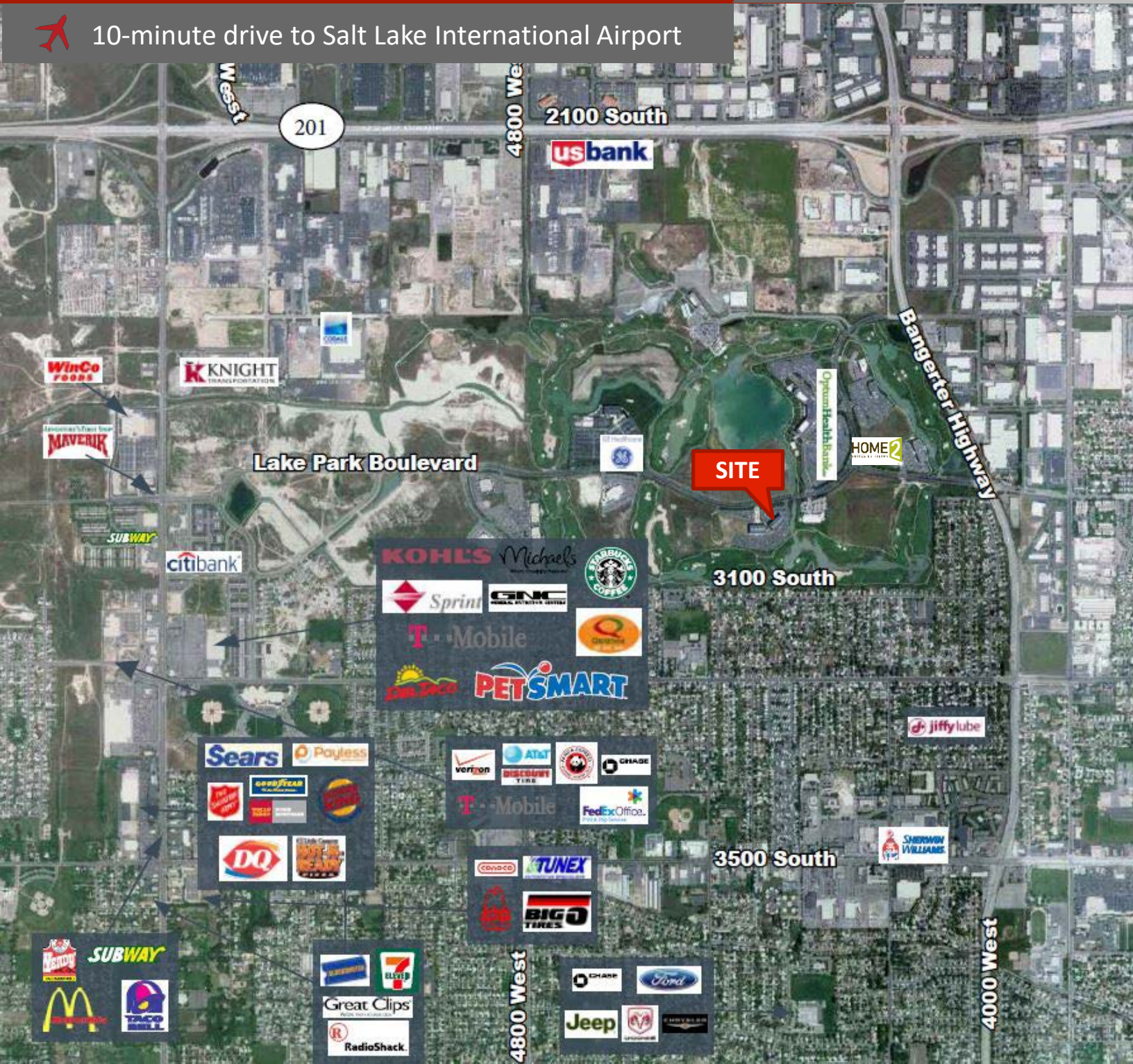


Legacy at Lake Park – Building 1

4225 Lake Park Blvd, West Valley City, UT 84120

✈️ 10-minute drive to Salt Lake International Airport



Legacy at Lake Park – Building 1

4225 Lake Park Blvd, West Valley City, UT 84120

For Lease

Building Details

- Class A Office
- High end finishes throughout
- \$24.00 SF Full Service
- **New move-in ready suites on the 1st and 2nd floors**
- 3rd floor now available and ready for TI's
- 6/1,000 parking
- Located on Stonebridge Golf Course
- Well maintained master planned area
- 10-foot ceilings
- Locker rooms onsite
- Home2Suites by Hilton within walking distance



For more information contact: **Jim Balderson**
+1 801 456 9519
jim.balderson@am.jll.com

David Nixon
+1 801 456 9518
david.nixon@am.jll.com

Jillian Johnson
+1 801 456 9517
jillian.johnson@am.jll.com

Jones Lang LaSalle Americas, Inc.

Jones Lang LaSalle Americas, Inc.
©2022 Jones Lang LaSalle LP, Inc. All rights reserved. All information contained herein is from sources deemed reliable; however, no representation or warranty is made to the accuracy thereof.



Jim Balderson
+1 801 456 9519
jim.balderson@am.jll.com

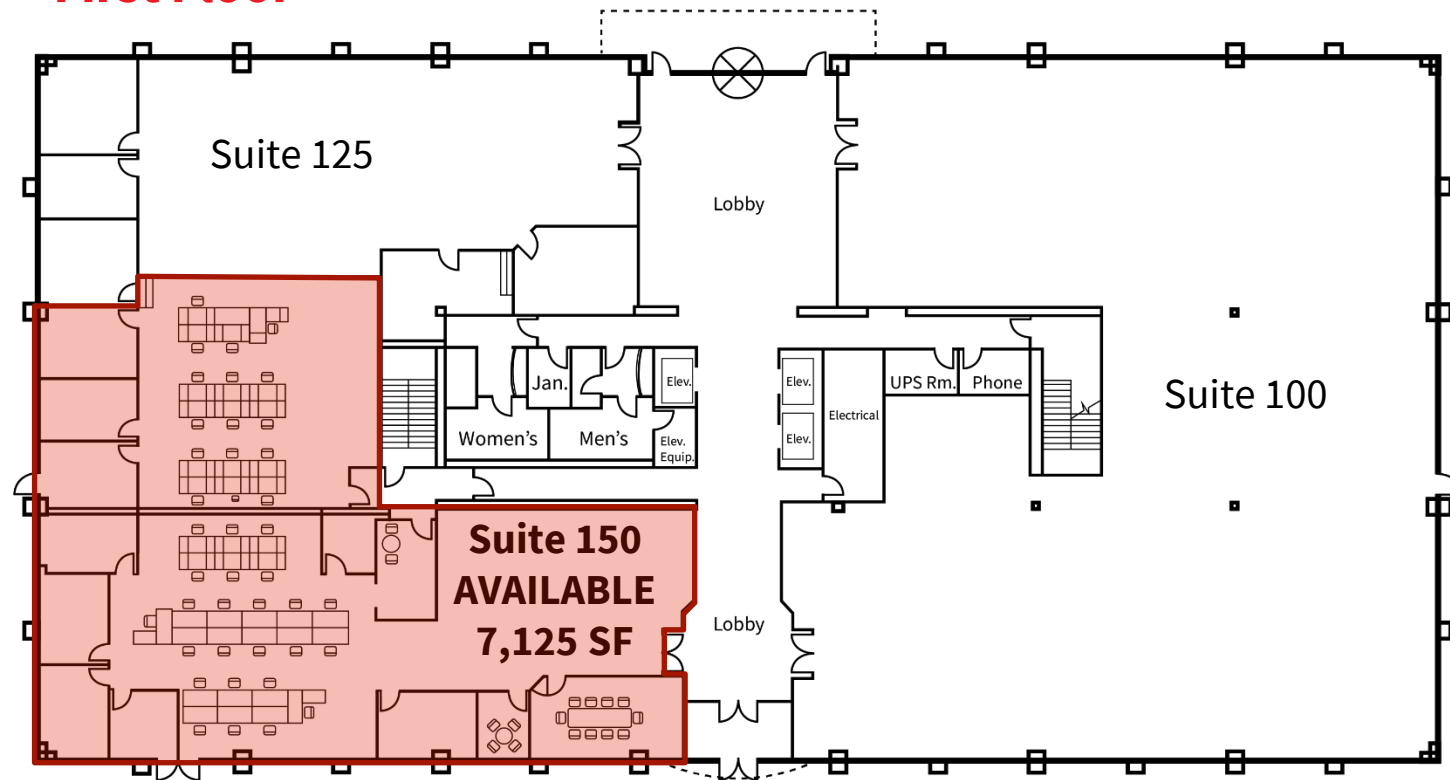
David Nixon
+1 801 456 9518
david.nixon@am.jll.com

Jillian Johnson
+1 801 456 9517
jillian.johnson@am.jll.com

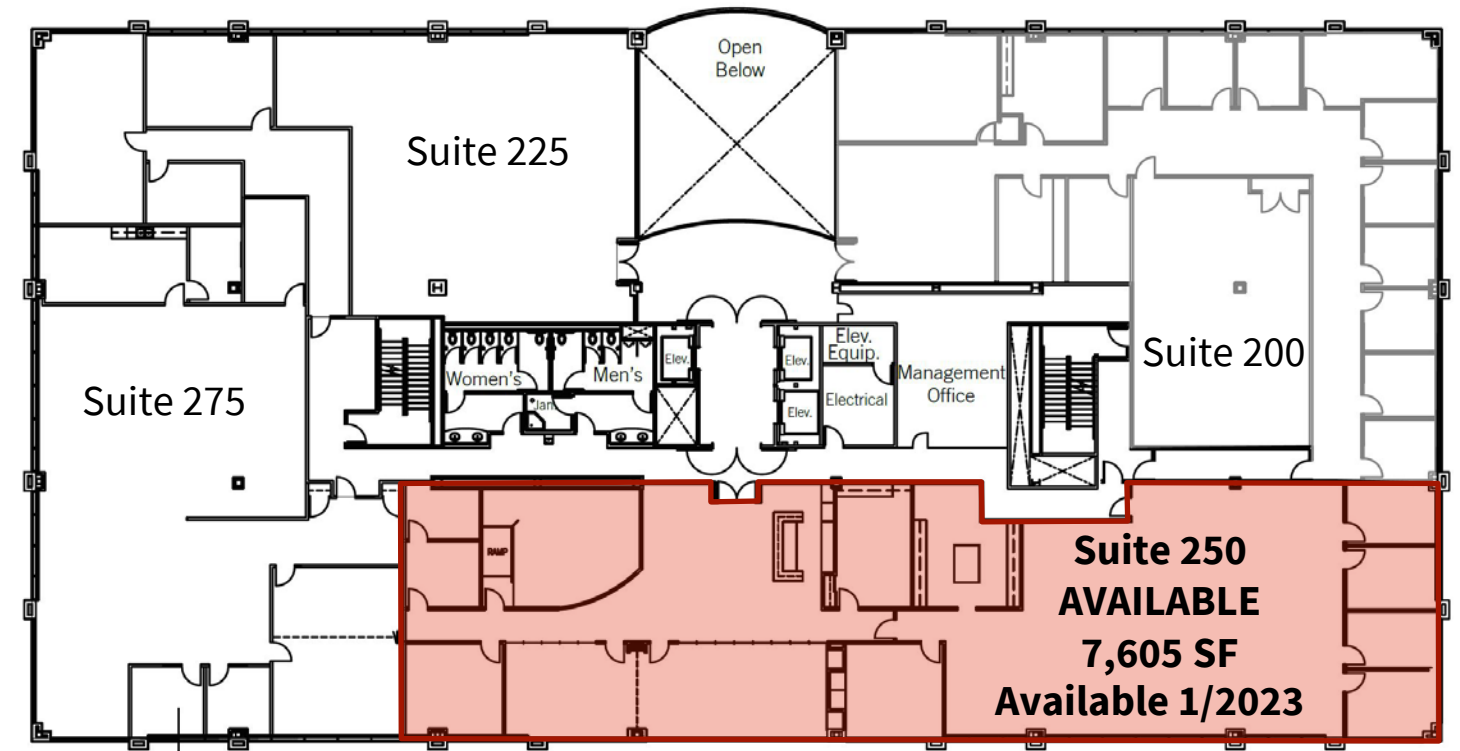
Legacy at Lake Park – Building 1

4225 Lake Park Blvd, West Valley City, UT 84120

First Floor



Second Floor



Third Floor

