



**CUSHMAN &
WAKEFIELD**
Commerce

FOR SALE

Washington Industrial Land

1125 E Washington Dam Road / Washington, UT 84780



4.78 ACRES±

Property Highlights

- Price: \$575,000
- Size: 4.78 Acres±
- Direct access from and frontage on Washington Dam Road
- Utilities adjacent to site
- Large quantity of clean fill dirt on site
- Priced to sell!

Tom Callister, SIOR
Director
+1 435 986 4709
tcallister@comre.com

Travis J. Parry, SIOR, CCIM
Senior Director
+1 435 986 4708
tparry@comre.com

2 West St. George Blvd, Suite 10
St. George, Utah 84770
Main +1 435 673 7111
Fax +1 435 673 7153
comre.comcomre.com

Independently Owned and Operated / A Member of the Cushman & Wakefield Alliance

Cushman & Wakefield Copyright 2017. No warranty or representation, express or implied, is made to the accuracy or completeness of the information contained herein, and same is submitted subject to errors, omissions, change of price, rental or other conditions, withdrawal without notice, and to any special listing conditions imposed by the property owner(s). As applicable, we make no representation as to the condition of the property (or properties) in question. (path: G:\1 - Projects\St George\Callister, Tom\1 - Flyers\1125eWashingtonDamRd)

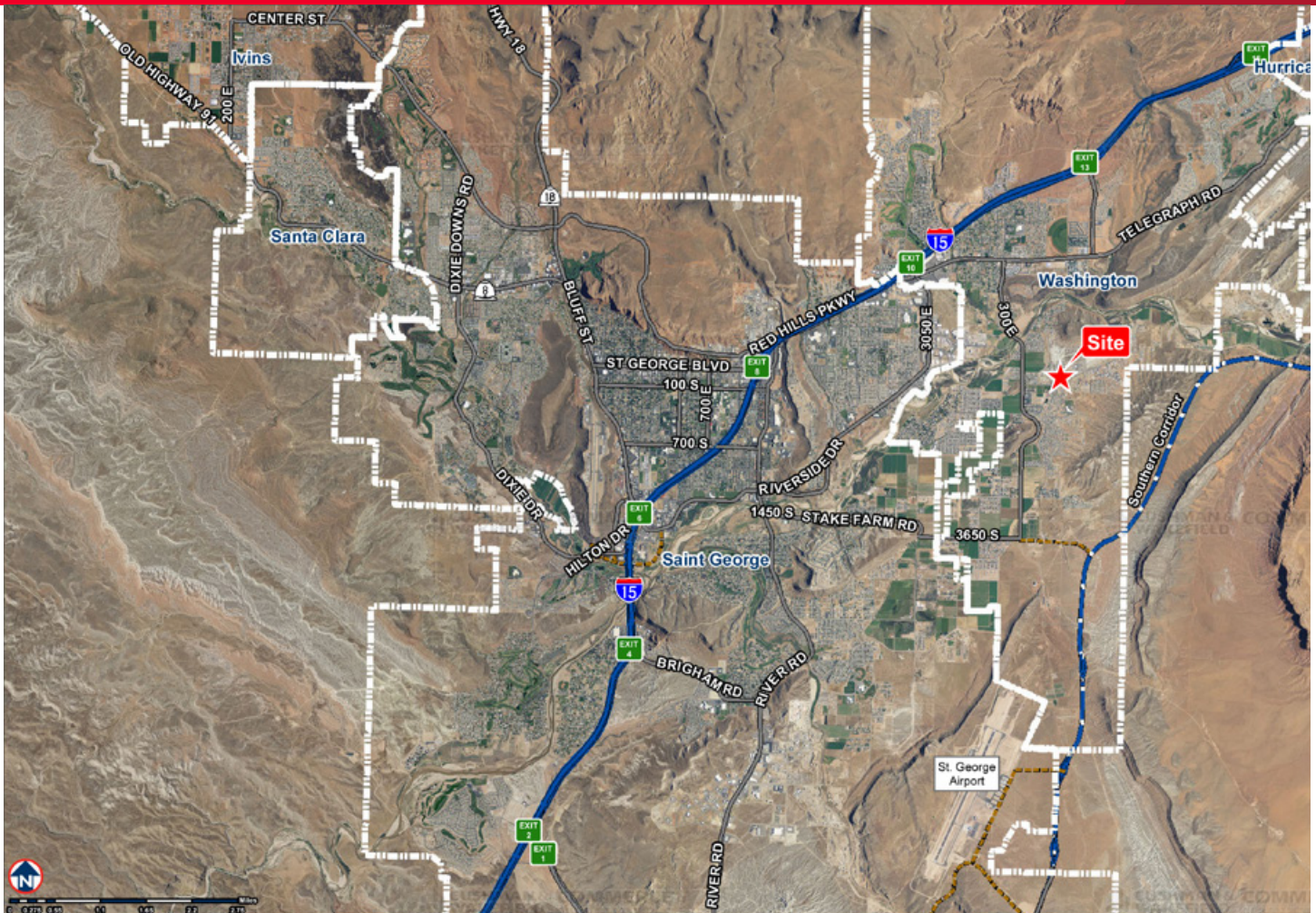


**CUSHMAN &
WAKEFIELD**
Commerce

FOR SALE

Washington Industrial Land

1125 E Washington Dam Road / Washington, UT 84780



Tom Callister, SIOR
Director
+1 435 986 4709
tcallister@comre.com

Travis J. Parry, SIOR, CCIM
Senior Director
+1 435 986 4708
tparry@comre.com

2 West St. George Blvd, Suite 10
St. George, Utah 84770
Main +1 435 673 7111
Fax +1 435 673 7153
comre.comcomre.com

Independently Owned and Operated / A Member of the Cushman & Wakefield Alliance

Cushman & Wakefield Copyright 2017. No warranty or representation, express or implied, is made to the accuracy or completeness of the information contained herein, and same is submitted subject to errors, omissions, change of price, rental or other conditions, withdrawal without notice, and to any special listing conditions imposed by the property owner(s). As applicable, we make no representation as to the condition of the property (or properties) in question. (path: G:\1 - Projects\St George\Callister, Tom\1 - Flyers\1125eWashingtonDamRd)