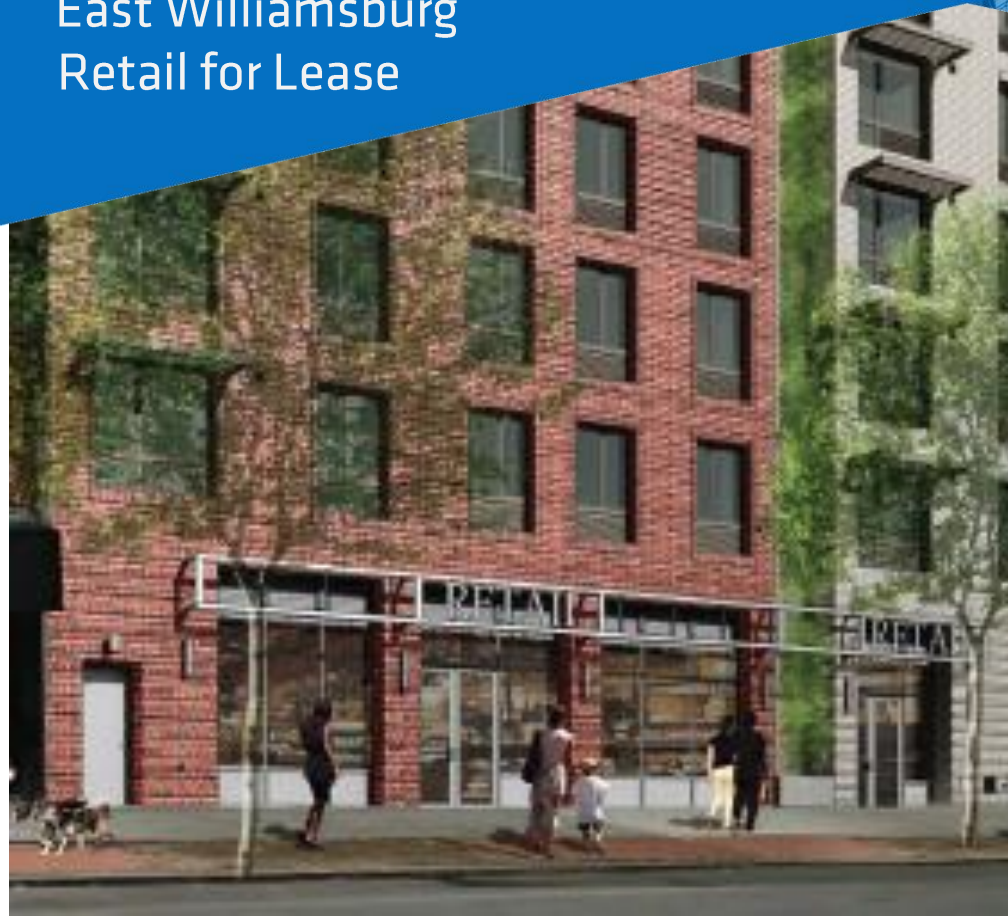


695 GRAND STREET

East Williamsburg
Retail for Lease

3,000 - 9,020 SF
+Usable Lower Level



SUMMARY

695 Grand Street is a newly developed mixed-use building, with nearby tenants including Sage, Bahia, Noorman's Kil, and Okonomi Yuji Ramen. Grand Street is the busiest corridor in East Williamsburg with many boutique retail and bar/restaurants. It has become a hub for artists and the creative class with many art galleries, music venues and co-working spaces in the area.

The Grand Street L station is two blocks away. The space is ideal for medical, educational or grocery use.

HIGHLIGHTS

- New construction
- High traffic location
- Lower level with 2 egresses
- Sprinklered on ground & lower level

LEASABLE AREA

9,020 SF on ground
7,238 SF lower level

CEILING HEIGHTS

12-14 feet on ground
8-9 feet on lower level

NEIGHBORHOOD

East Williamsburg

CROSS STREETS

Manhattan & Graham Avenues

AVAILABILITY

Immediate

TRANSPORTATION



NEIGHBORING TENANTS



For more information, contact exclusive agents:

Peter Schubert
Managing Director
pschubert@terracrg.com

Abbie Cheng
Leasing Associate
acheng@terracrg.com

Bill Strassman
Leasing Associate
wstrassman@terracrg.com

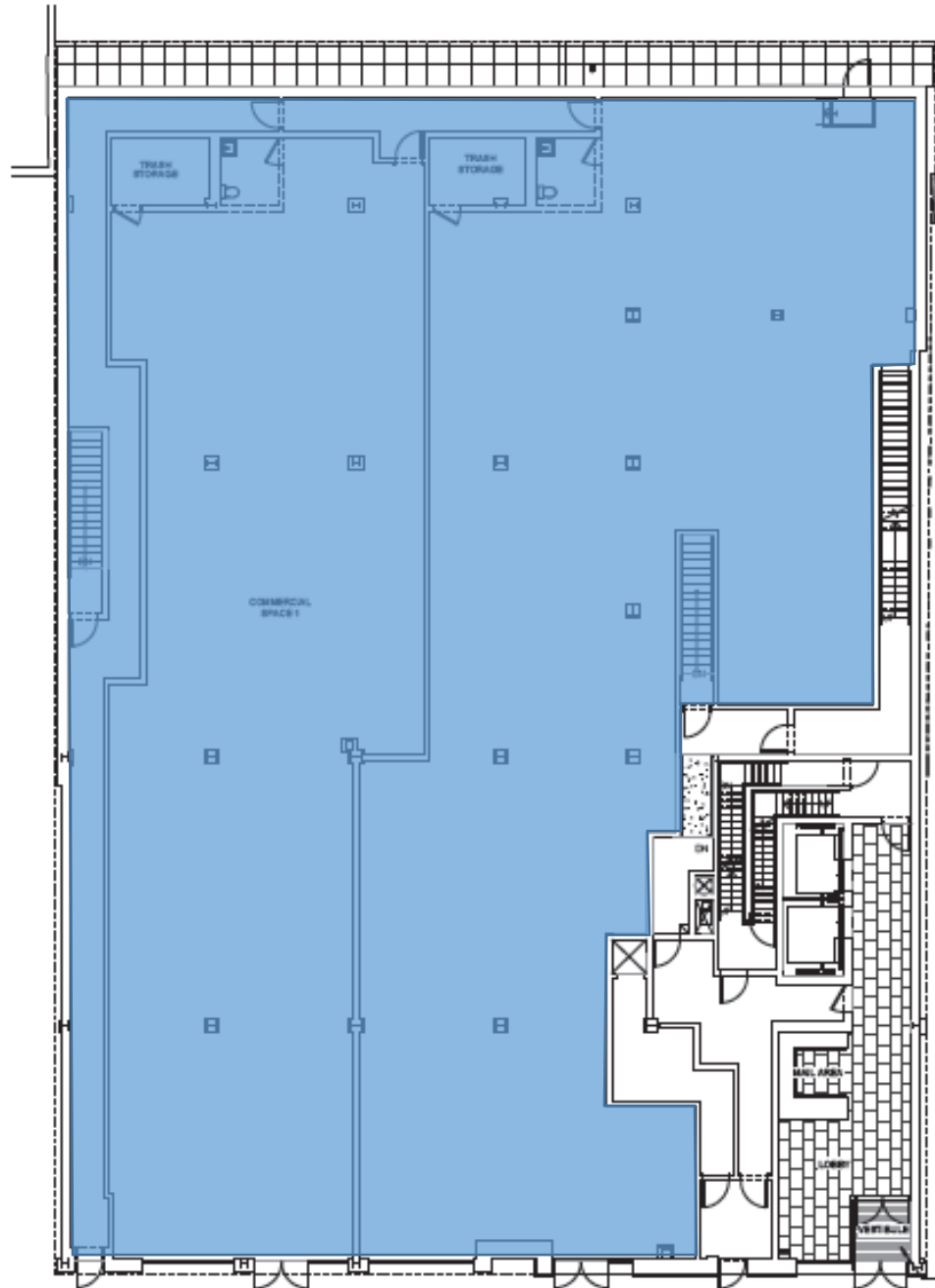
(718) 768-7788
terracrg.com

695 GRAND STREET

East Williamsburg
Retail for Lease

3,000 - 9,020 SF
+Usable Lower Level

Ground Level



Grand Street

The information provided herein has either been given to us by the owner of the property or was obtained from sources we deem reliable. We do not guarantee the accuracy of any information. All zoning, existing square feet of buildings, available buildable square feet, permitted uses and any other information provided herein must be independently verified. The value of any real estate investment is dependent upon a variety of factors including income, vacancy rates, expense estimates, tax brackets and general market assumptions, all of which should be evaluated by your tax advisor and/or legal counsel. Prospective buyer and tenants should carefully verify each item of information herein.



For more information, contact exclusive agents:

Peter Schubert
Managing Director
pschubert@terracrgr.com

Abbie Cheng
Leasing Associate
acheng@terracrgr.com

Bill Strassman
Leasing Associate
wstrassman@terracrgr.com

(718) 768-7788
terracrgr.com