

FOR LEASE

399 CAMPUS DRIVE

SOMERSET, NJ 08873

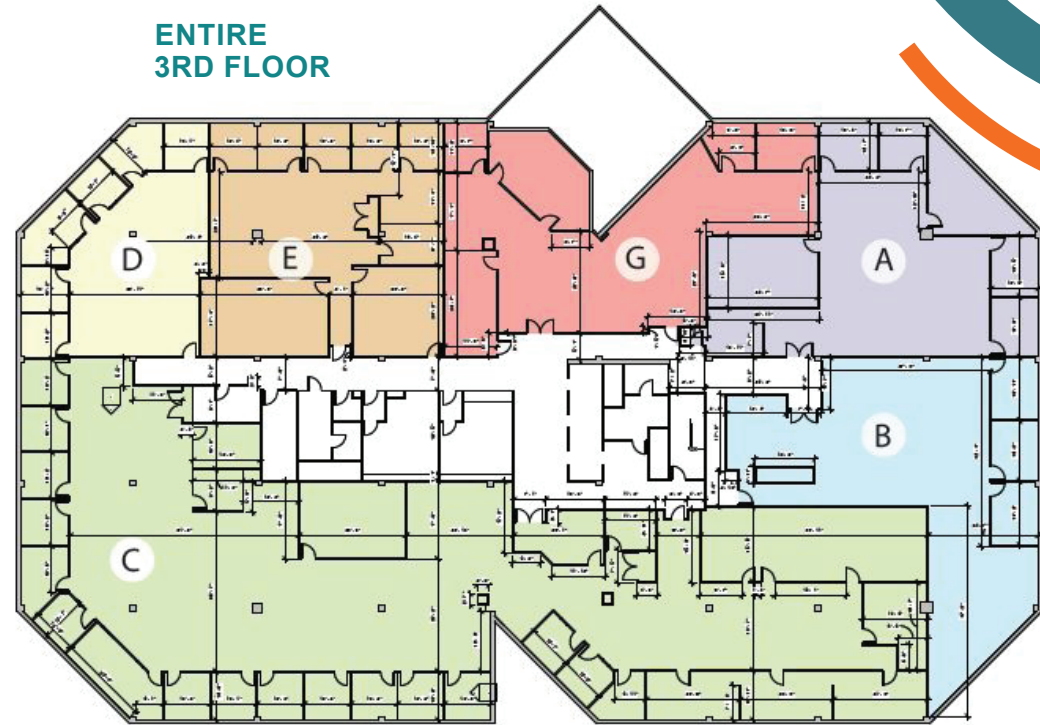
UP TO 27,000 SF AVAILABLE

CBRE



SPECIFICATIONS

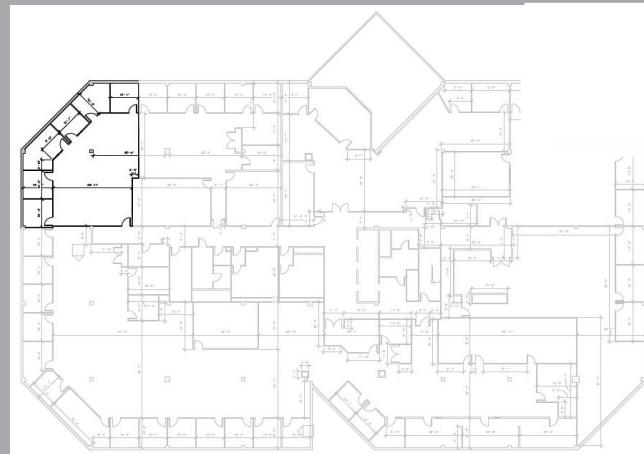
- New Owner/Management
- New HVAC system, newly renovated common areas and newly renovated bathrooms
- Cafe
- Loading dock
- On-site Property Management
- Immediate access to Route 287
- Close to NJ Turnpike, Garden State Parkway, Route 22 & I-78
- Proximate to retail, restaurants, banks, hotels and conference centers
- Three miles from Bridgewater Commons Mall



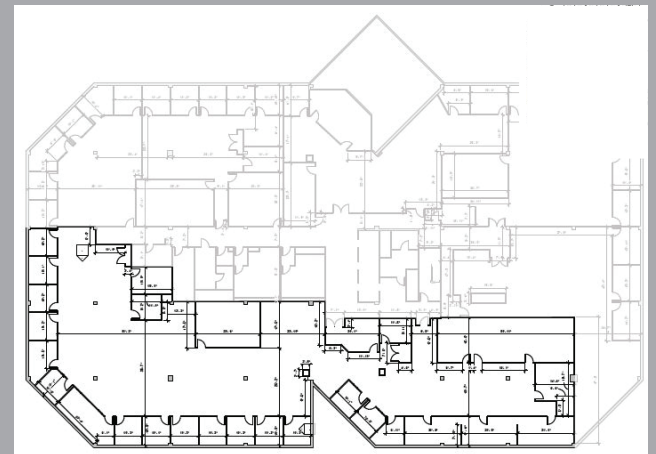
AVAILABILITIES

Floor	Available RSF
3rd Floor	2,219 RSF (D)
3rd Floor	3,299 RSF (E)
3rd Floor	3,531 RSF (G)
3rd Floor	3,542 RSF (B)
3rd Floor	3,572 RSF (A)
3rd Floor	12,921 RSF (C)

3RD FLOOR
2,219 RSF



3RD FLOOR
12,921 RSF





399 CAMPUS DRIVE

SOMERSET, NJ 08873

CONTACT US

PETER N. SHIKAR

First Vice President
+1 732 509 8915
peter.shikar@cbre.com

DOUG PETROZZINI

Senior Vice President
+1 732 509 2840
doug.petrozzini@cbre.com

© 2020 CBRE, Inc. All rights reserved. This information has been obtained from sources believed reliable, but has not been verified for accuracy or completeness. You should conduct a careful, independent investigation of the property and verify all information. Any reliance on this information is solely at your own risk. CBRE and the CBRE logo are service marks of CBRE, Inc. All other marks displayed on this document are the property of their respective owners, and the use of such logos does not imply any affiliation with or endorsement of CBRE. Photos herein are the property of their respective owners. Use of these images without the express written consent of the owner is prohibited.

CBRE