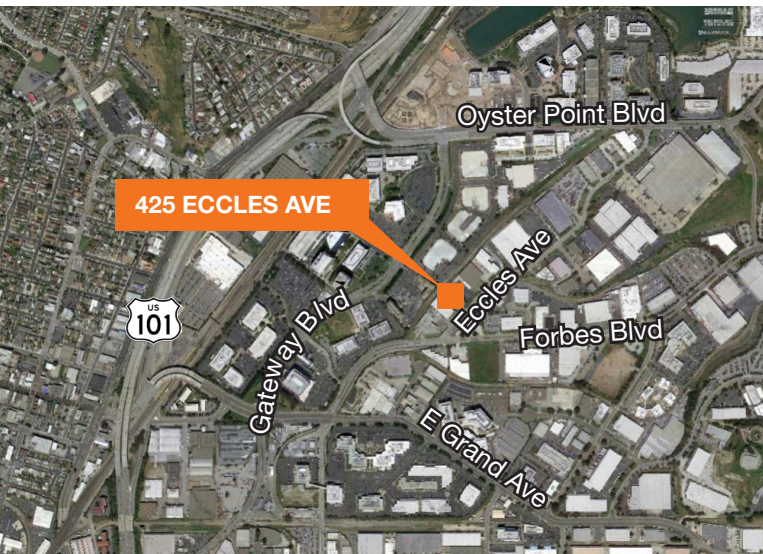
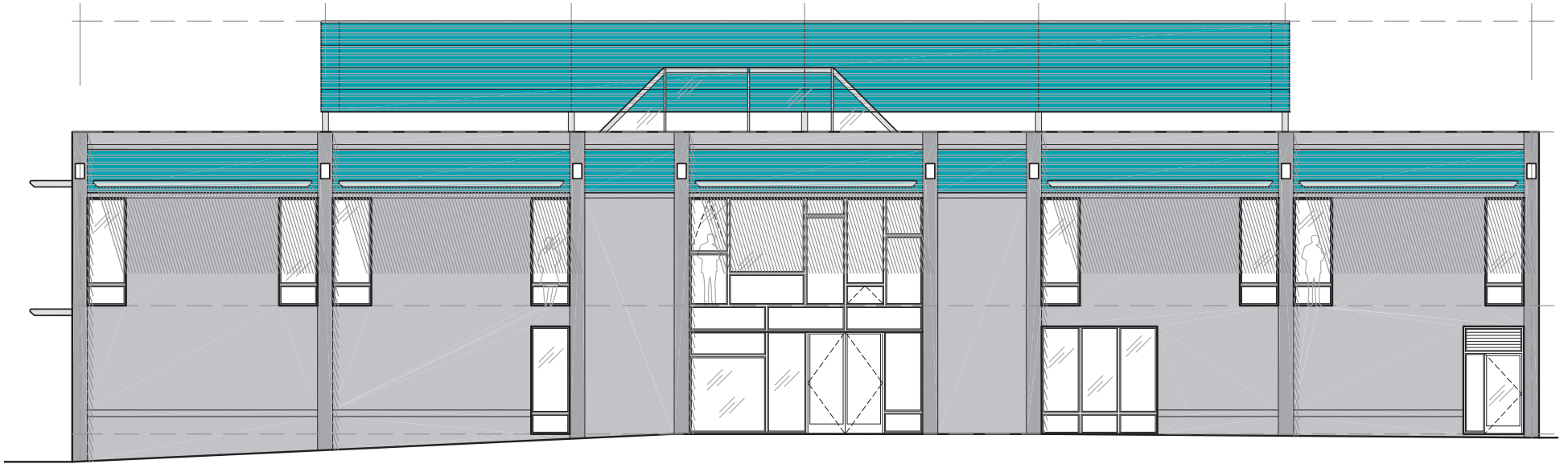


NEW LISTING

New Life Science Laboratory Space For Lease

425 Eccles Ave, South San Francisco, CA



FEATURES

±20,000 SF, partial 2-story building

Complete shell upgrade - new glass on all four sides

All labs/lab support with new HVAC - 100% make-up air

HVAC capacity for 5 chemical fume hoods

Generic wet labs with center island sink and perimeter electrical distribution

2nd floor office space with a mix of private and open cubicle areas

CONTACT

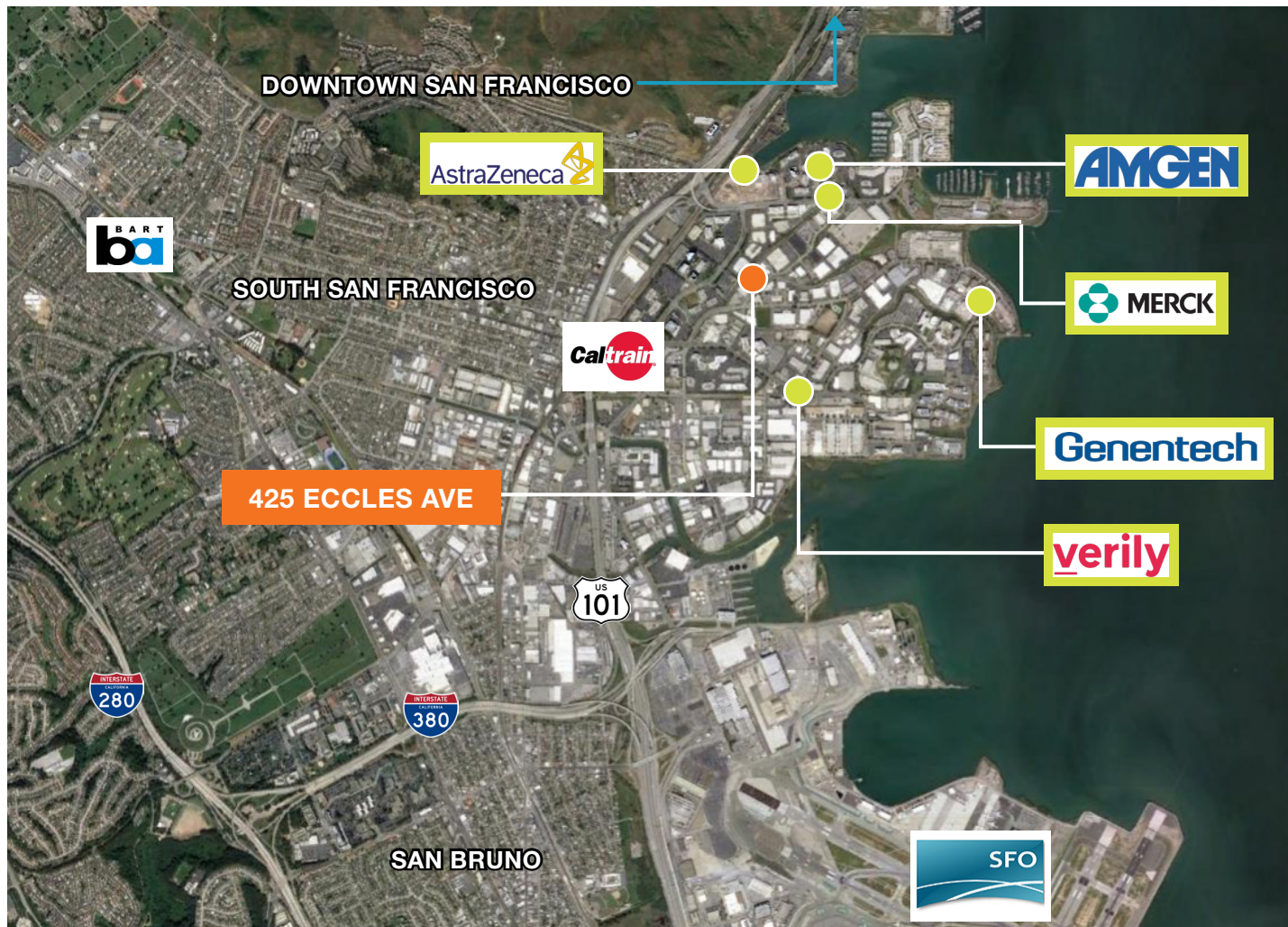
Gregg Domanico
650.769.3508
greggd@kiddermathews.com
LIC # 00996779



FOR LEASE

425 Eccles Avenue

AMENITIES MAP



CONTACT

Gregg Domanico
650.769.3508
greggd@kiddermathews.com
LIC # 00996779



FOR LEASE

425 Eccles Avenue

FLOOR PLAN - GROUND FLOOR



CONTACT

Gregg Domanico
650.769.3508
greggd@kiddermathews.com
LIC # 00996779



FOR LEASE

425 Eccles Avenue

FLOOR PLAN - SECOND FLOOR



CONTACT

Gregg Domanico
650.769.3508
greggd@kiddermathews.com
LIC # 00996779



FOR LEASE

425 Eccles Avenue

PARKING LOT

CONTACT

Gregg Domanico
650.769.3508
greggd@kiddermathews.com
LIC # 00996779

