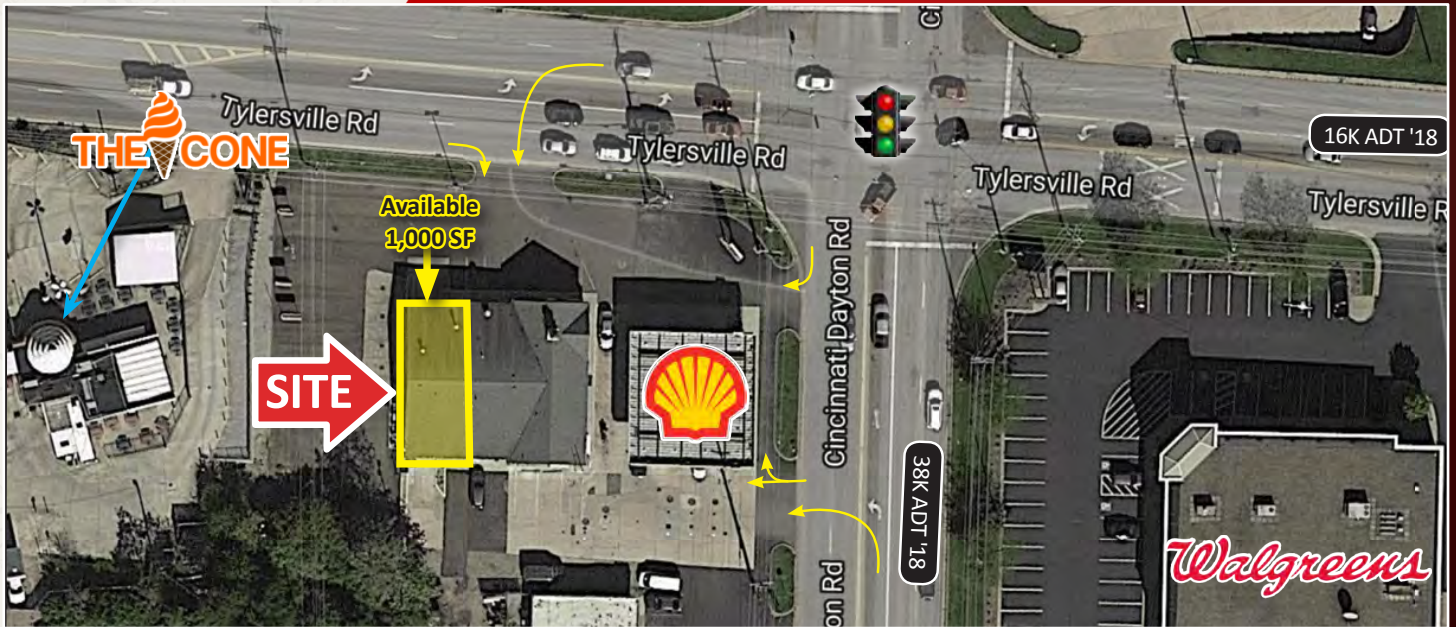


FOR LEASE

West Chester/Liberty Retail Space



7809 Cincinnati-Dayton Road, West Chester, Ohio 45069

DEMOGRAPHICS

Year 2019	One Mile	Three Mile	Five Mile
Estimated Population	9,256	54,974	139,362
Median Income	\$83,592	\$102,689	\$107,177
Average HH Income	\$109,691	\$121,590	\$127,960
Daytime Population	3,421	26,697	79,882

PROPERTY HIGHLIGHTS

- High Visibility on the Corner of Cincinnati-Dayton Rd. and Tylersville Rd.
- Drive-Thru Available
- High Daytime Population
- Space is Behind a Shell Gas Station and Across From Walgreens
- Traffic Light Accessibility
- **Traffic Counts:**
Cincinnati-Dayton Road 38.3K ADT (2018)



Zamaris M. Geleszinski
513.924.5265
zamaris@onsiteretailgroup.com

Joshua M. Rothstein
513.268.4453
josh@onsiteretailgroup.com

OnSite Retail Group, LLC | 9545 Kenwood Road, Suite 202 | Cincinnati, OH 45242 | 513.924.4989 | www.onsiteretailgroup.com

The information herein is produced using data from private and government sources deemed to be reliable and is provided without representation or warranty. Logos are for identification purposes only and may be trademarks of their respective companies. © 2019 OnSite Retail Group, LLC All Rights Reserved.



Zamaris M. Geleszinski
 513.924.5265
 zamaris@onsiteretailgroup.com

Joshua M. Rothstein
 513.268.4453
 josh@onsiteretailgroup.com

WEST CHESTER/LIBERTY RETAIL SPACE
7809 Cincinnati-Dayton Road, West Chester, OH 45069

OnSite
 Retail Group



Zamaris M. Geleszinski
513.924.5265
zamaris@onsiteretailgroup.com

Joshua M. Rothstein
513.268.4453
josh@onsiteretailgroup.com

WEST CHESTER/LIBERTY RETAIL SPACE

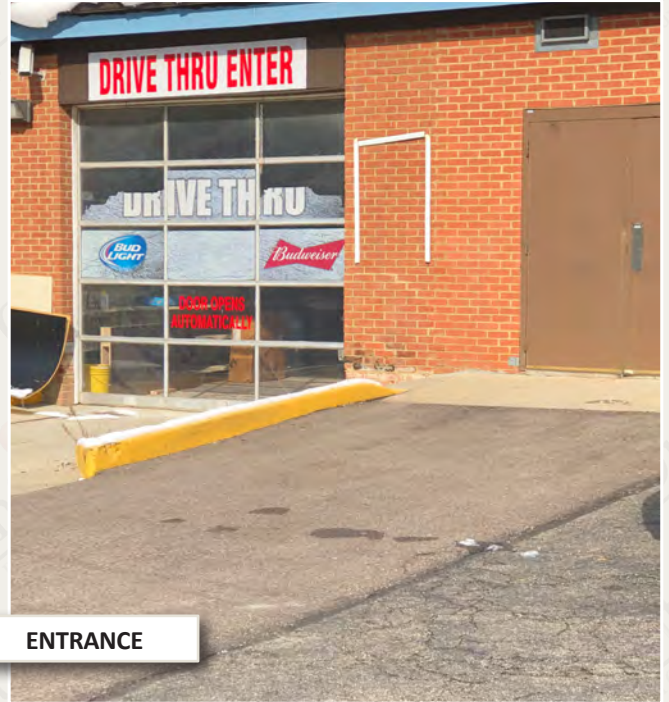
7809 Cincinnati-Dayton Road, West Chester, OH 45069

OnSite
Retail Group

For Lease

7809 Cincinnati-Dayton Road, West Chester, Ohio 45069

EXIT



ENTRANCE

EXIT



ATTACHED SHELL



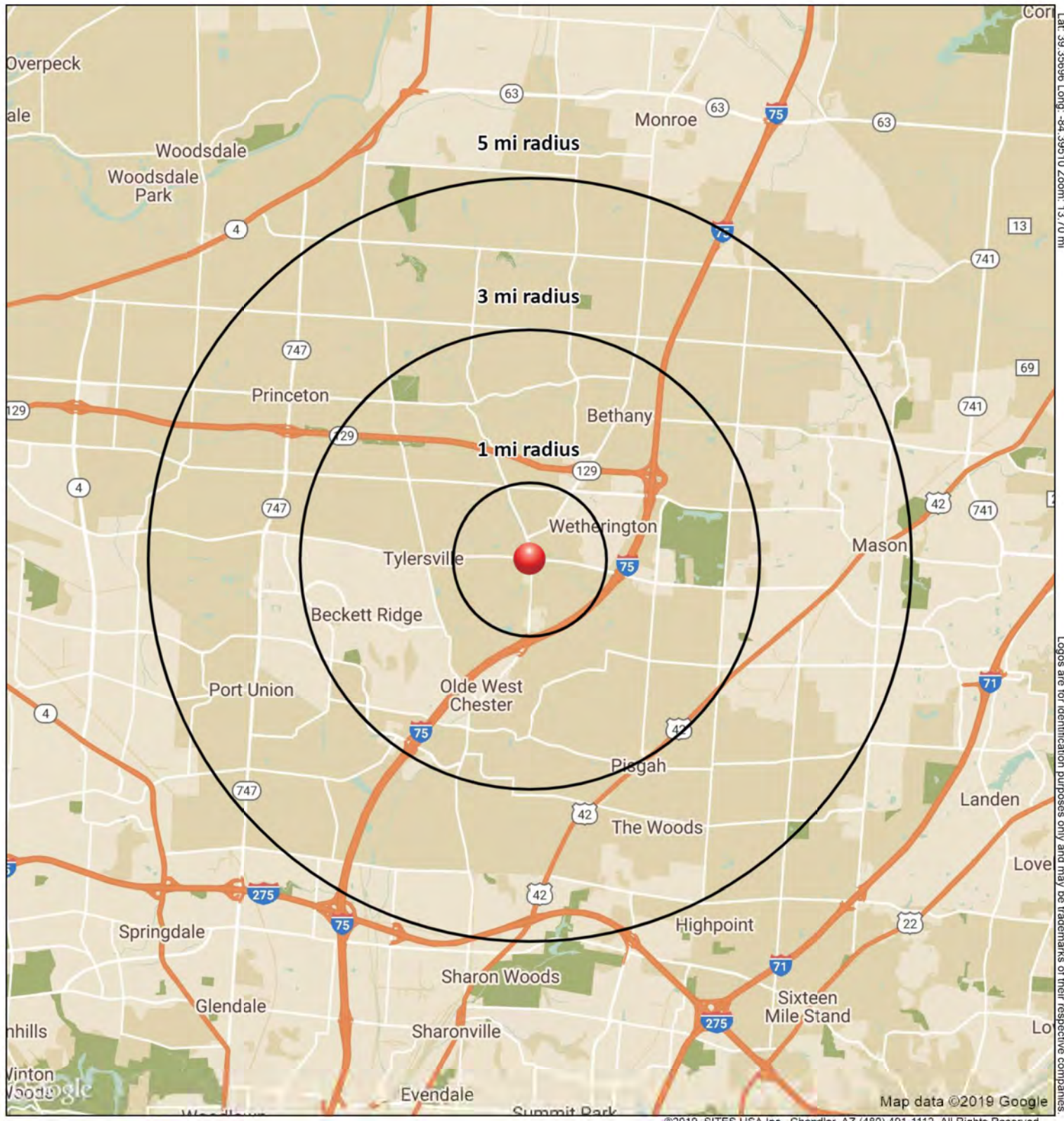
SIDE LOT



Zamaris "Z" M. Geleszinski
zamaris@onsiteretailgroup.com
513.924.5265

OnSite
Retail Group

Joshua M. Rothstein
josh@onsiteretailgroup.com
513.268.4453



Lat: 39.35696 Long: -84.39510 Zoom: 13.70 mi
Logos are for identification purposes only and may be trademarks of their respective companies.

7809 Cincinnati Dayton Rd
West Chester, OH 45069

November 2019



This map was produced using data from private and government sources deemed to be reliable. The information herein is provided without representation or warranty.

SUMMARY PROFILE

2000-2010 Census, 2019 Estimates with 2024 Projections



Lat/Lon: -84.3951/39.357

RS1

7809 Cincinnati Dayton Rd

West Chester, OH 45069

		1 mi radius	3 mi radius	5 mi radius
POPULATION	2019 Estimated Population	9,256	54,974	139,362
	2024 Projected Population	9,525	56,437	144,326
	2010 Census Population	8,547	52,770	130,347
	2000 Census Population	8,482	50,039	102,398
	Projected Annual Growth 2019 to 2024	0.6%	0.5%	0.7%
	Historical Annual Growth 2000 to 2019	0.5%	0.5%	1.9%
	2019 Median Age	36.0	38.6	37.6
HOUSEHOLDS	2019 Estimated Households	3,534	19,936	50,692
	2024 Projected Households	3,629	20,411	52,203
	2010 Census Households	3,099	18,236	45,285
	2000 Census Households	2,950	16,699	35,202
	Projected Annual Growth 2019 to 2024	0.5%	0.5%	0.6%
	Historical Annual Growth 2000 to 2019	1.0%	1.0%	2.3%
RACE AND ETHNICITY	2019 Estimated White	69.3%	80.1%	76.6%
	2019 Estimated Black or African American	9.4%	7.2%	7.7%
	2019 Estimated Asian or Pacific Islander	13.9%	8.7%	11.3%
	2019 Estimated American Indian or Native Alaskan	0.2%	0.2%	0.2%
	2019 Estimated Other Races	7.2%	3.9%	4.2%
	2019 Estimated Hispanic	9.1%	4.0%	5.2%
INCOME	2019 Estimated Average Household Income	\$109,691	\$121,590	\$127,960
	2019 Estimated Median Household Income	\$83,592	\$102,689	\$107,177
	2019 Estimated Per Capita Income	\$41,881	\$44,118	\$46,574
EDUCATION (AGE 25+)	2019 Estimated Elementary (Grade Level 0 to 8)	2.6%	1.5%	1.5%
	2019 Estimated Some High School (Grade Level 9 to 11)	2.8%	2.3%	2.7%
	2019 Estimated High School Graduate	23.5%	20.6%	19.9%
	2019 Estimated Some College	17.9%	18.5%	16.0%
	2019 Estimated Associates Degree Only	8.0%	7.4%	7.1%
	2019 Estimated Bachelors Degree Only	29.4%	30.4%	32.3%
	2019 Estimated Graduate Degree	15.9%	19.3%	20.4%
BUSINESS	2019 Estimated Total Businesses	397	2,260	5,798
	2019 Estimated Total Employees	3,421	26,697	79,882
	2019 Estimated Employee Population per Business	8.6	11.8	13.8
	2019 Estimated Residential Population per Business	23.3	24.3	24.0

This report was produced using data from private and government sources deemed to be reliable. The information herein is provided without representation or warranty.