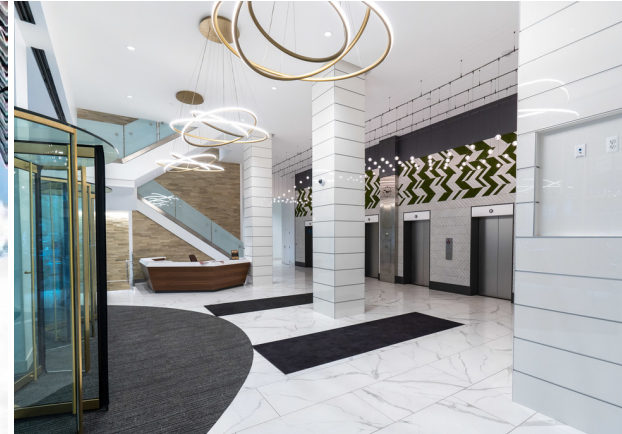


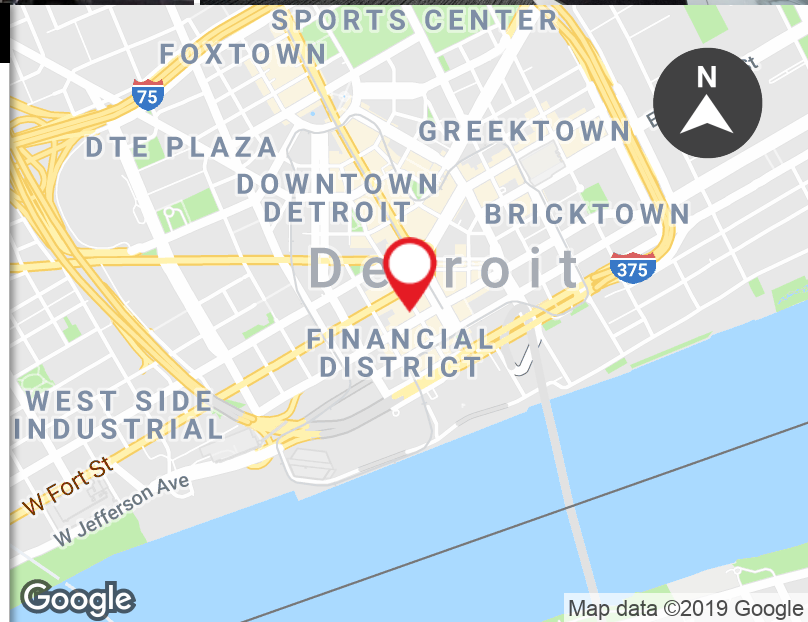
# FOR LEASE

THE FORD BUILDING  
615 GRISWOLD STREET  
DETROIT, MI 48226



## PROPERTY FEATURES:

- Detroit Central Business District high rise office
- Brand new upscale building lobby
- Modern elevators
- Suites offer large windows, high ceilings and nice views
- Suites available from small space to full floors
- Custom built open floor plan or private offices
- Central to Campus Martius Park



FOR MORE INFORMATION PLEASE CONTACT:

**STEVE EISENSHTADT**

steve.eisenshtadt@freg.com

**GREGGORY KENT**

greggory.kent@freg.com

**248.324.2000**

**eCODE 501**

The information provided herein along with any attachment(s) was obtained from sources believed to be reliable, however, Friedman Real Estate makes no guarantees, warranties, or representations as to the completeness or accuracy of such information and legal counsel is advised. All information provided is subject to verification and no liability for reliance on such information or errors or omissions is assumed. The presentation of this property is submitted subject to errors, omissions, change of price or conditions, prior sale or lease, or withdrawal without notice. Copyright © 2019 Friedman Real Estate. All rights reserved.

# FOR LEASE

THE FORD BUILDING  
615 GRISWOLD STREET  
DETROIT, MI 48226



## AVAILABLE SPACES

SUITE	SF	DATE AVAILABLE
2nd Floor	12,500 SF	Immediately
300	6,356 SF	Immediately
320	4,972 SF	Immediately
405	751 SF	Immediately
407	898 SF	Immediately
408	712 SF	Immediately
418	1,701 SF	Immediately
508	346 SF	Immediately
509	365 SF	Immediately
515	846 SF	Immediately
531	1,826 SF	Immediately
532	550 SF	Immediately
7th Floor	12,500 SF	Immediately
800	2,991 SF	Immediately
815	1,473 SF	Immediately
915	390 SF	Immediately
920	1,781 SF	Immediately
10th Floor	11,328 SF	Immediately
1105	1,540 SF	Immediately
1116-1117	2,241 SF	Immediately
1205	1,930 SF	Immediately
1215	1,086 SF	Immediately
1216	404 SF	Immediately
1210	1,367 SF	Immediately
1230	3,592 SF	Immediately
1325	1,152 SF	Immediately
13th Floor	11,382 SF	Immediately
1400	2,608 SF	Immediately
1402	2,372 SF	Immediately
15th Floor	12,500 SF	Immediately
16th Floor	12,500 SF	Immediately
17th Floor	12,500 SF	Immediately
18th Floor	12,500 SF	Immediately

FOR MORE INFORMATION PLEASE CONTACT:

**STEVE EISENSHTADT** [steve.eisenshtadt@freg.com](mailto:steve.eisenshtadt@freg.com)

**GREGGORY KENT** [greggory.kent@freg.com](mailto:greggory.kent@freg.com)

**248.324.2000**

**eCODE 501**

# FOR LEASE

THE FORD BUILDING  
615 GRISWOLD STREET  
DETROIT, MI 48226



FOR MORE INFORMATION PLEASE CONTACT:

**STEVE EISENSHTADT** [steve.eisenshtadt@freg.com](mailto:steve.eisenshtadt@freg.com)

**GREGGORY KENT** [greggory.kent@freg.com](mailto:greggory.kent@freg.com)

**248.324.2000**

**eCODE 501**