



**FOR SALE**  
**\$695,000**  
**1,900 SF**  
Industrial  
Condo

**920 S HOLGATE ST**  
**SUITE 108**  
SEATTLE, WA 98134

Two-story flex

Grade level loading

Fenced parking

Minutes from downtown Seattle

Immediate access to I-5, I-90 & West  
Seattle bridge



**MORGAN RICHEY**  
425.362.1409  
morgan.richey@ngkf.com

**CAM WARREN**  
425.362.1395  
cam.warren@ngkf.com

**THAD MALLORY**  
425.362.1410  
thad.mallory@ngkf.com



**6 MINUTES**  
TO DOWNTOWN  
SEATTLE VIA I-5



**3 MINUTES**  
TO CENTURYLINK FIELD &  
T-MOBILE PARK STADIUM

**920 S HOLGATE ST | SUITE 108**  
Seattle, WA 98134

Airport Way S



S Holgate St

**IMMEDIATE ACCESS**  
TO I-5

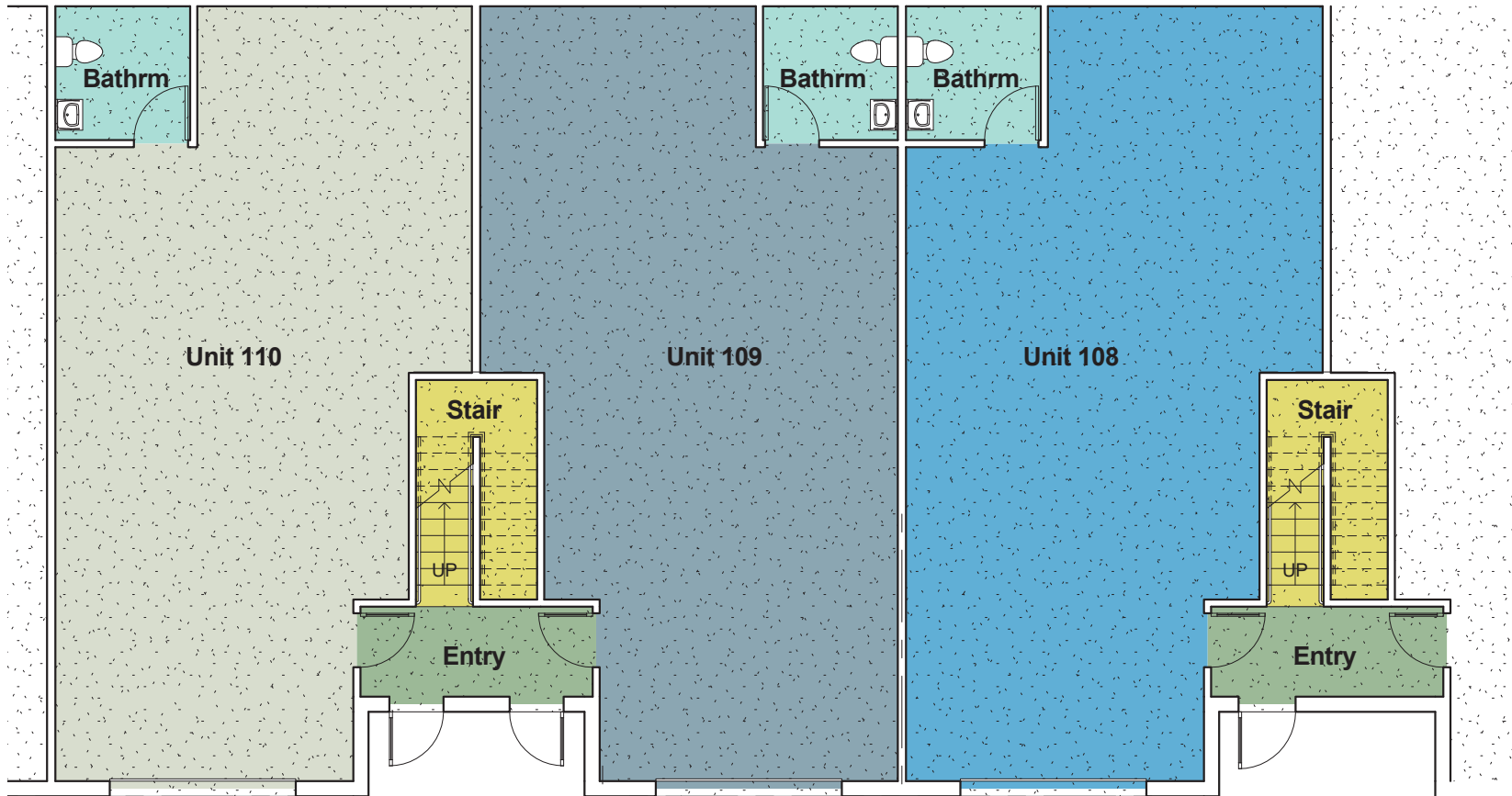
Airport Way S

# 920 S HOLGATE ST | SUITE 108


SEATTLE, WA 98134

## MAIN LEVEL

### FLOOR PLAN



#### Room Legend

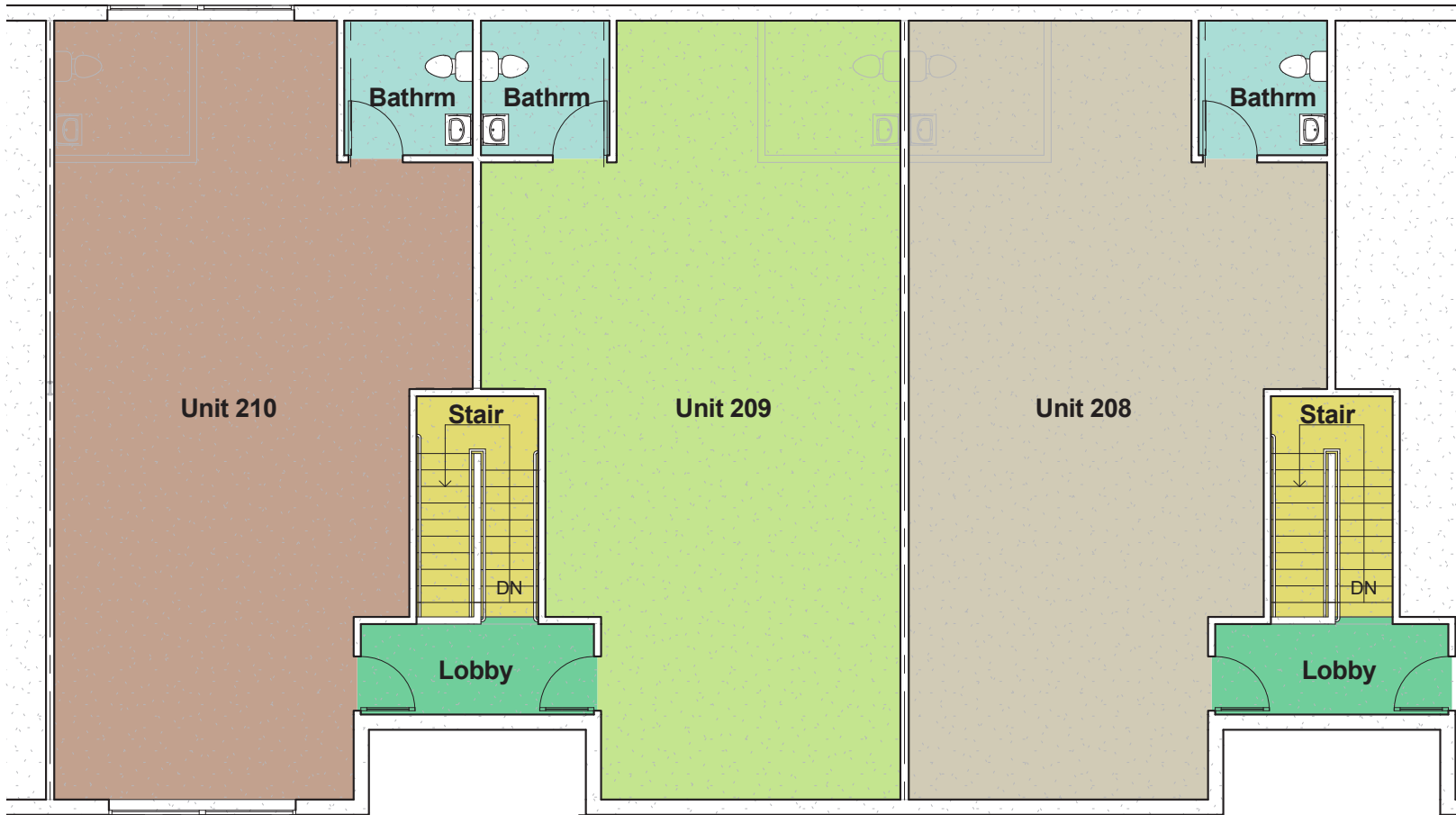
-  Bathrm
-  Entry
-  Stair

# 920 S HOLGATE ST | SUITE 108

SEATTLE, WA 98134

## 2ND LEVEL

### FLOOR PLAN



#### Room Legend

-  Bathrm
-  Entry
-  Stair



**MORGAN RICHEY**  
425.362.1409  
morgan.richey@ngkf.com

**CAM WARREN**  
425.362.1395  
cam.warren@ngkf.com

**THAD MALLORY**  
425.362.1410  
thad.mallory@ngkf.com