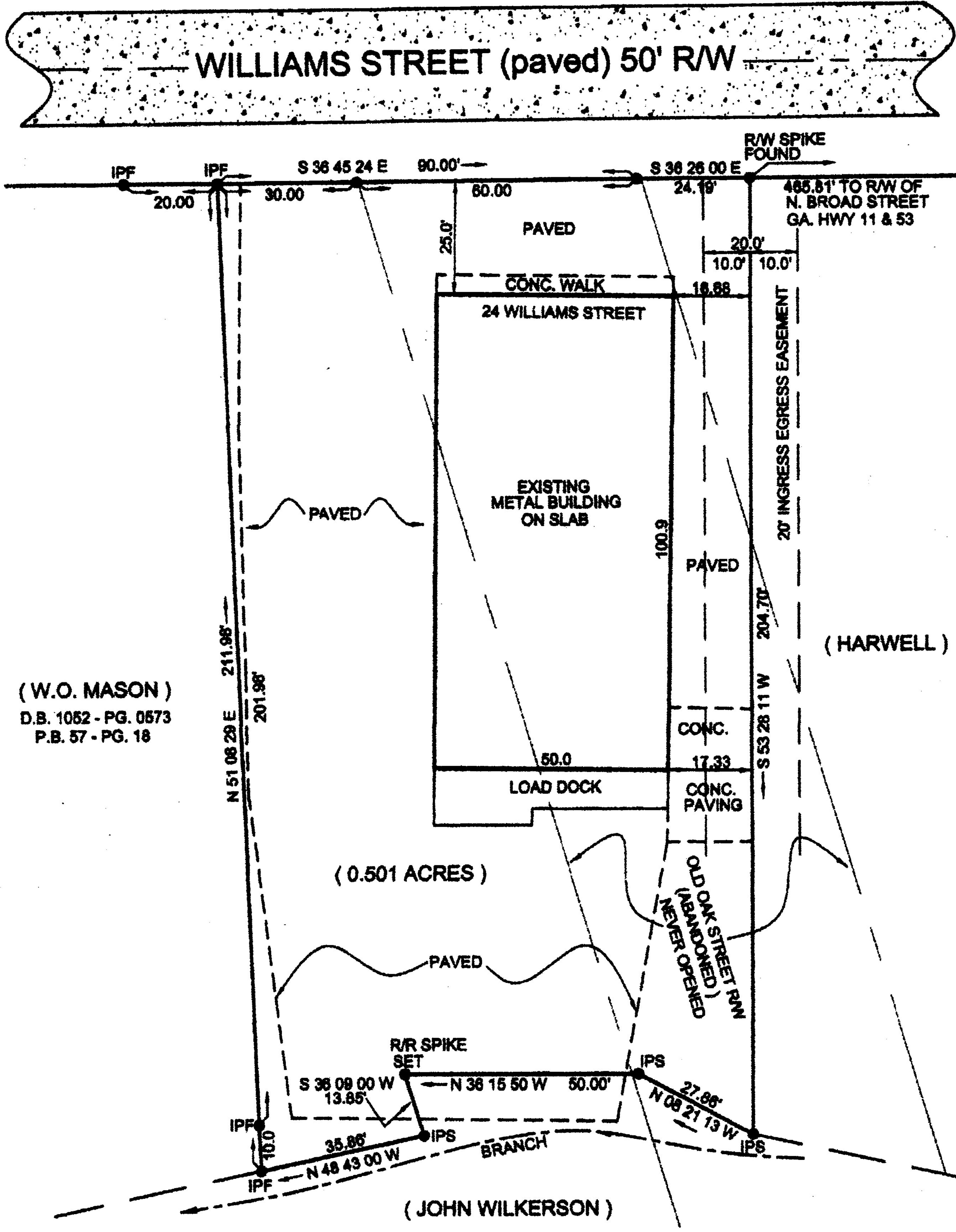
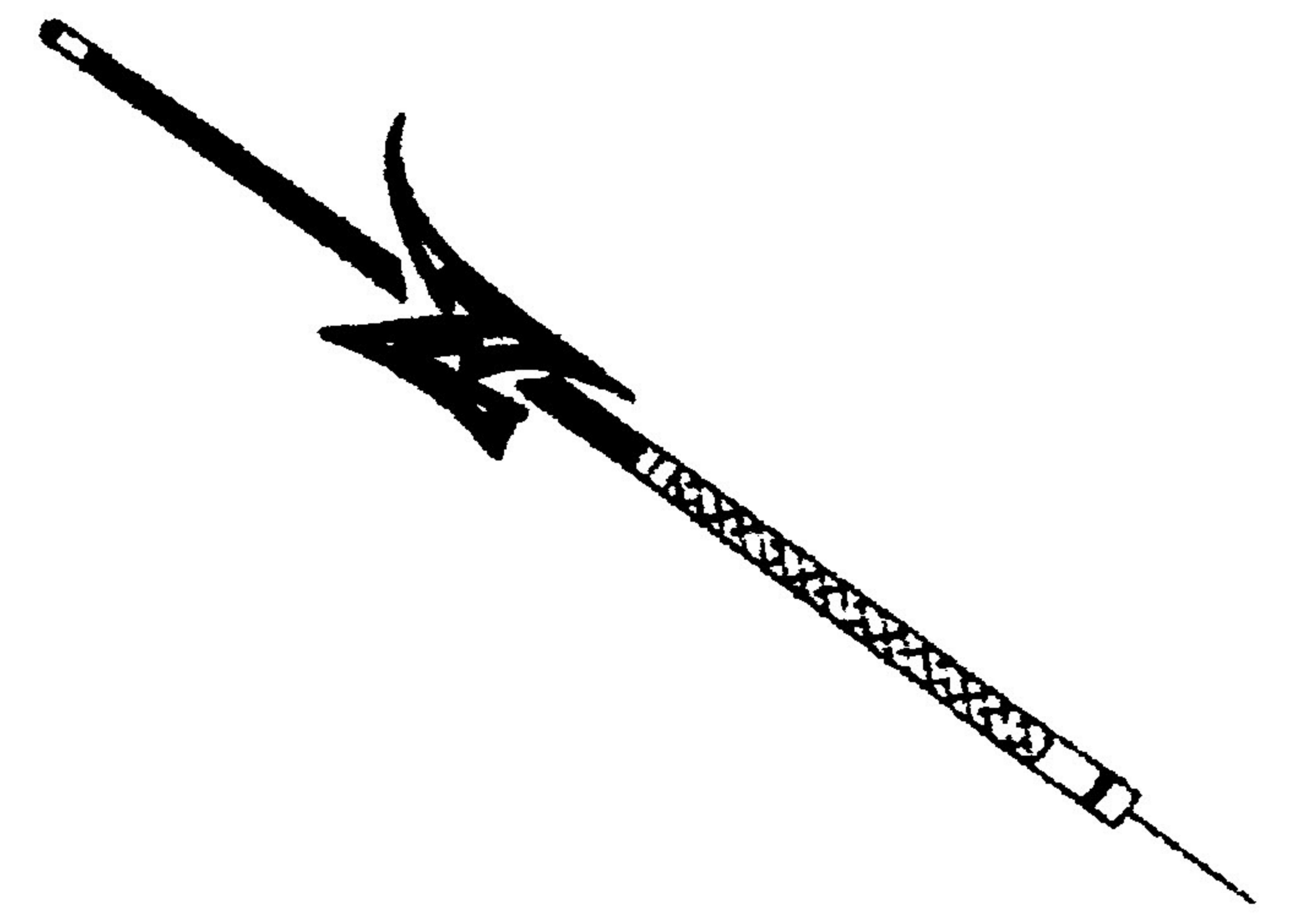


TOPCON GTS-2B TOTAL STATION
 used to obtain the linear and angular
 measurements used in the preparation of this plat.
 The field data upon which this plat is based has
 closure precision of one foot in 27,500 feet
 and an angular error of 2" per angle point and
 as adjusted using the COMPASS rule.

This survey has been calculated for closure and
 found to be accurate within one foot in
100,000 feet.



(W.O. MASON)
 D.B. 1052 - PG. 0573
 P.B. 57 - PG. 18

- REFERENCE -
- 1.) BEING TRACT 2 OF A SURVEY FOR DOUGLAS HARWELL BY US DATED 04/05/2005.
 - 2.) AS RECORDED IN PLAT BOOK 57 - PAGE 18.



SURVEY FOR				STATE OF GEORGIA	
WELLS FARGO; A&D REALTY, LLC; SUPREME HOT RODS, LLC; & FIRST AMERICAN TITLE INSURANCE COMPANY					
CITY	GMD	COUNTY	SCALE	DATE	
WINDER	243	BARROW	1"=30'	08-25-2015	
W. T. DUNAHOO AND ASSOCIATES					
P.O. BOX 183 302 W. MAY ST.			(770) 887-3811		WINDER, GEORGIA

IPF - SPIKE - RAILROAD SPIKE
 IPF - IRON PIN FOUND - 1/2" OPEN TOP
 IPF - IRON PIN SET - 1/2" OPEN TOP