

FOR LEASE

1701 S. Kansas Ave., Newton, Kansas



Newton Retail

Newton Retail is an 80 acre planned mixed use development in Newton, Kansas. Phase One is 15,000 square feet of retail and outparcel sales. Future development plans potentially include Class A office space and multi-family housing.

Newton's trade area encompasses Moundridge, Goessel, Sedgwick, Halstead, Hesston, Valley Center, Whitewater, Peabody, Elbing and Burrton. Newton's Trade Area includes Bethel and Hesston Colleges. Newton is also home to large employers such as Norcraft Companies Inc., BNSF Railroad, USD 373, Harvey County and Newton Medical Center.

Newton Medical Center Data:

- 113,953 total patient visits
- 13,666 emergency visits
- 65,388 hospital patient visits
- 3.7 days average length of inpatient stay
- 670 full time staff
- \$48 million in payroll and benefits

Available Space For Lease: 13,500 SF
Pad Sites Available: Various sizes available
Lease Rate: Negotiable + \$5.00 NNN

Population:

1 Mile 3,947
3 Miles 18,497
5 Miles 22,106

Estimated Average House Hold Income:

1 Mile \$56,015
3 Miles \$48,897
5 Miles \$50,344

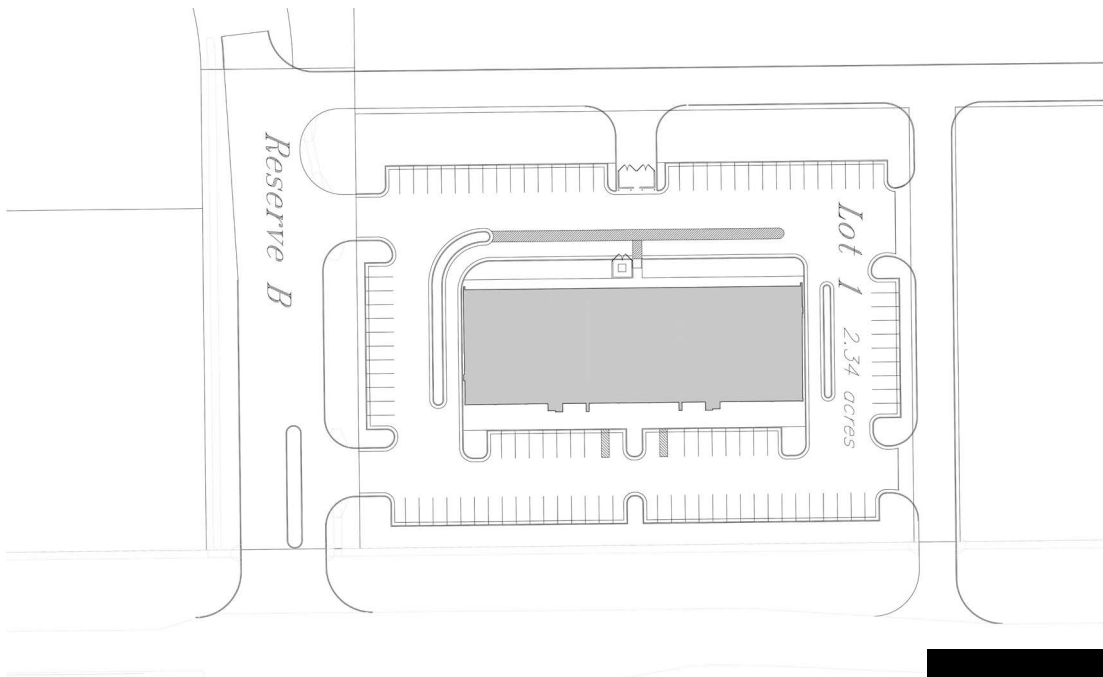
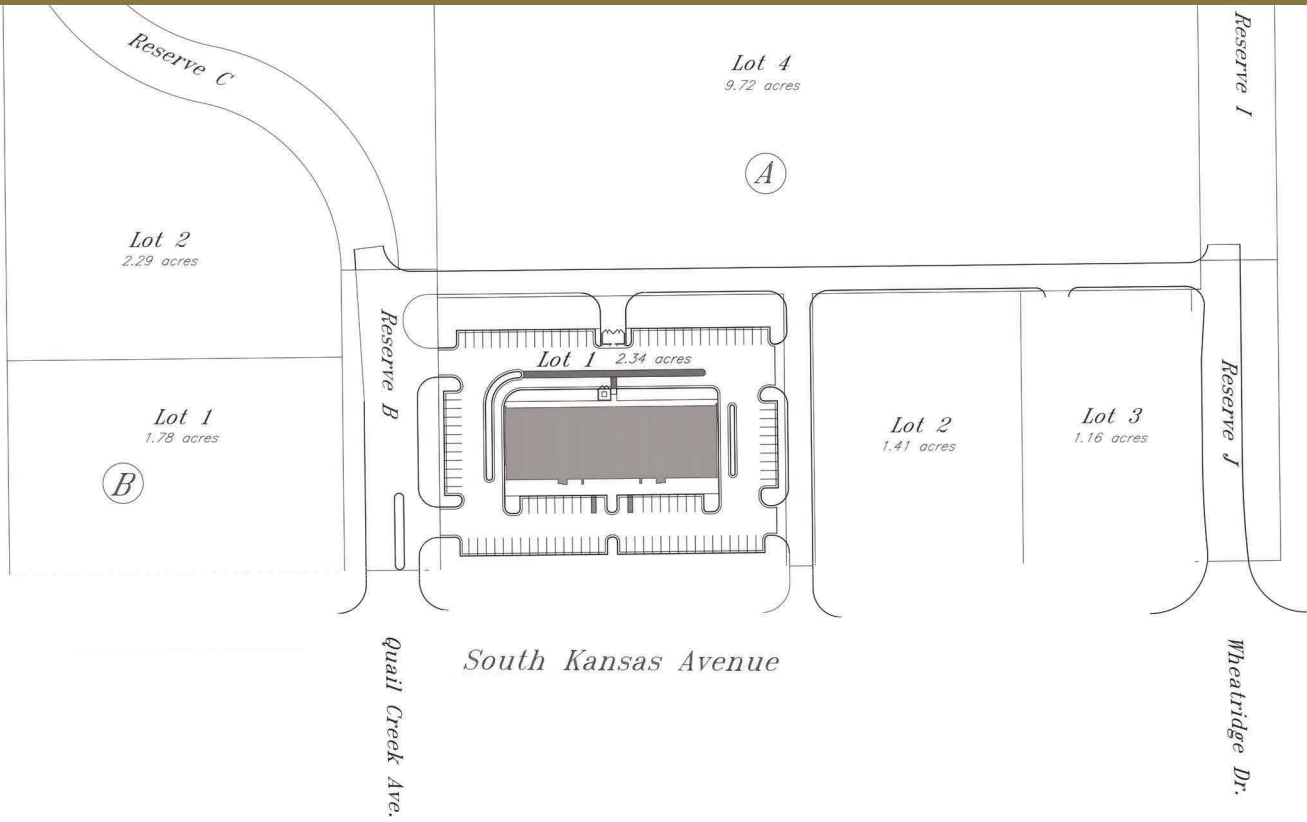
Area Neighbors: The brand new YMCA, Walmart Super Center, Dollar Tree, Newton Medical Center, Sand Creek Golf Course and Dillons.



CHARLIE KING
charlie@occmgmt.com
T: 316-262-3331
C: 316-706-1583

PHASE 1

1701 S. Kansas Ave., Newton, Kansas



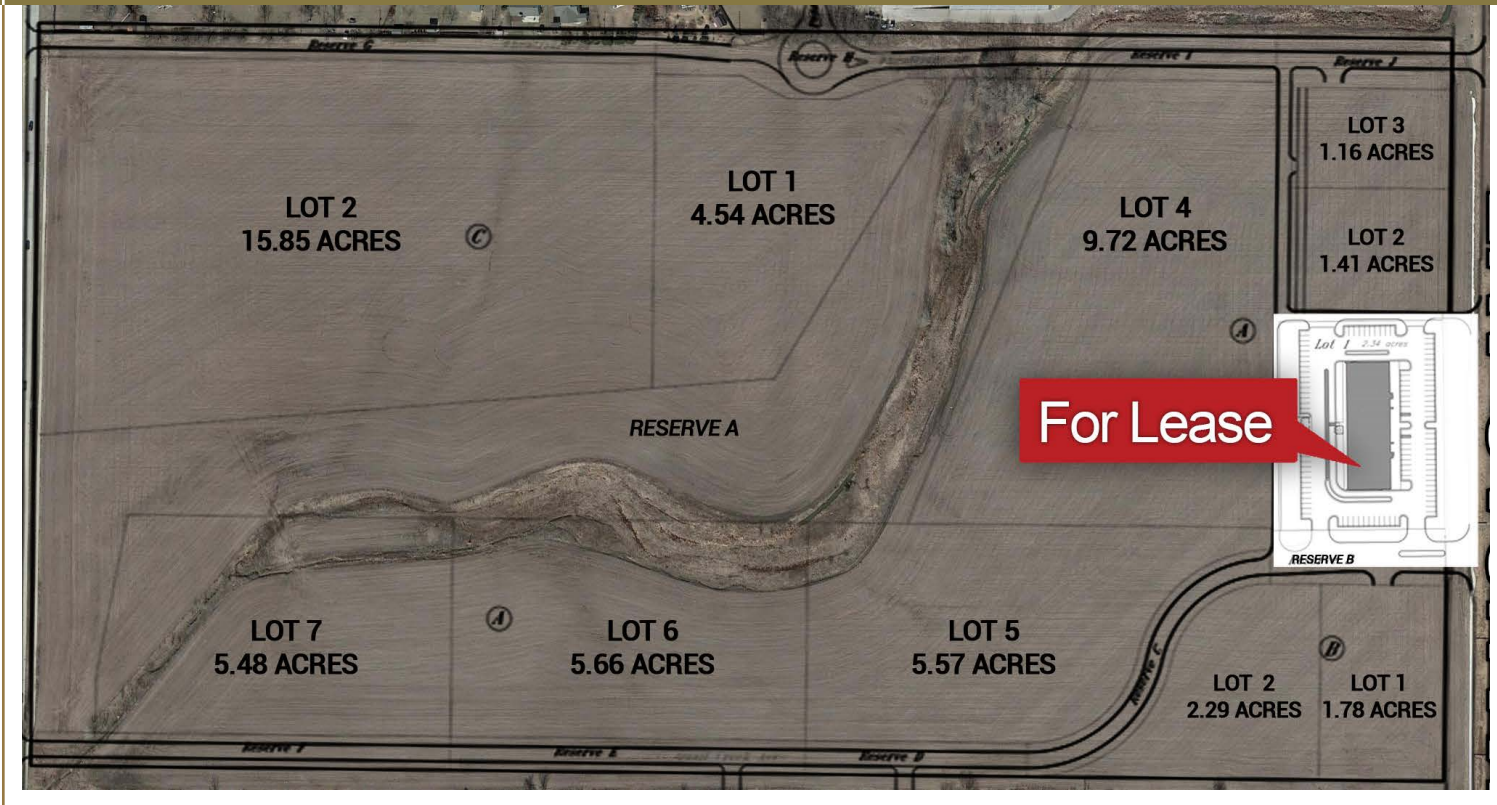
CHARLIE KING
charlie@occmgmt.com
T: 316-262-3331
C: 316-706-1583

8111 E. 32nd St. N., Suite 101
Wichita, KS 67226

www.occmgmt.com
occidental@occmgmt.com

COMPLETE SITE PLAN

1701 S. Kansas Ave., Newton, Kansas



CHARLIE KING
charlie@occmgmt.com
T: 316-262-3331
C: 316-706-1583

8111 E. 32nd St. N., Suite 101
Wichita, KS 67226

www.occmgmt.com
occidental@occmgmt.com

FOR LEASE

1701 S. Kansas Ave., Newton, Kansas



CHARLIE KING
charlie@occmgmt.com
T: 316-262-3331
C: 316-706-1583

8111 E. 32nd St. N., Suite 101
Wichita, KS 67226

www.occmgmt.com
occidental@occmgmt.com