



2525 2nd Avenue

Lake Charles, Louisiana 70601

Property Highlights

- Church facility available for sale
- Located on the NEC of 2nd Avenue and 17th Street & SEC of 2nd Avenue and Orchard Street
- ±14,786 SF on ±1.64 acres
- Near Huber Park and LC Memorial Hospital
- Flood Class X
- Residential Zoning
- Security system with cameras
- Shower(s) in restrooms and washer/dryer connections in utility
- All movable items reserved by Seller (requires 90 days to remove all equipment, fixtures & furniture)

Sale Price

\$325,000



For more information

Joel Davidson, CCIM

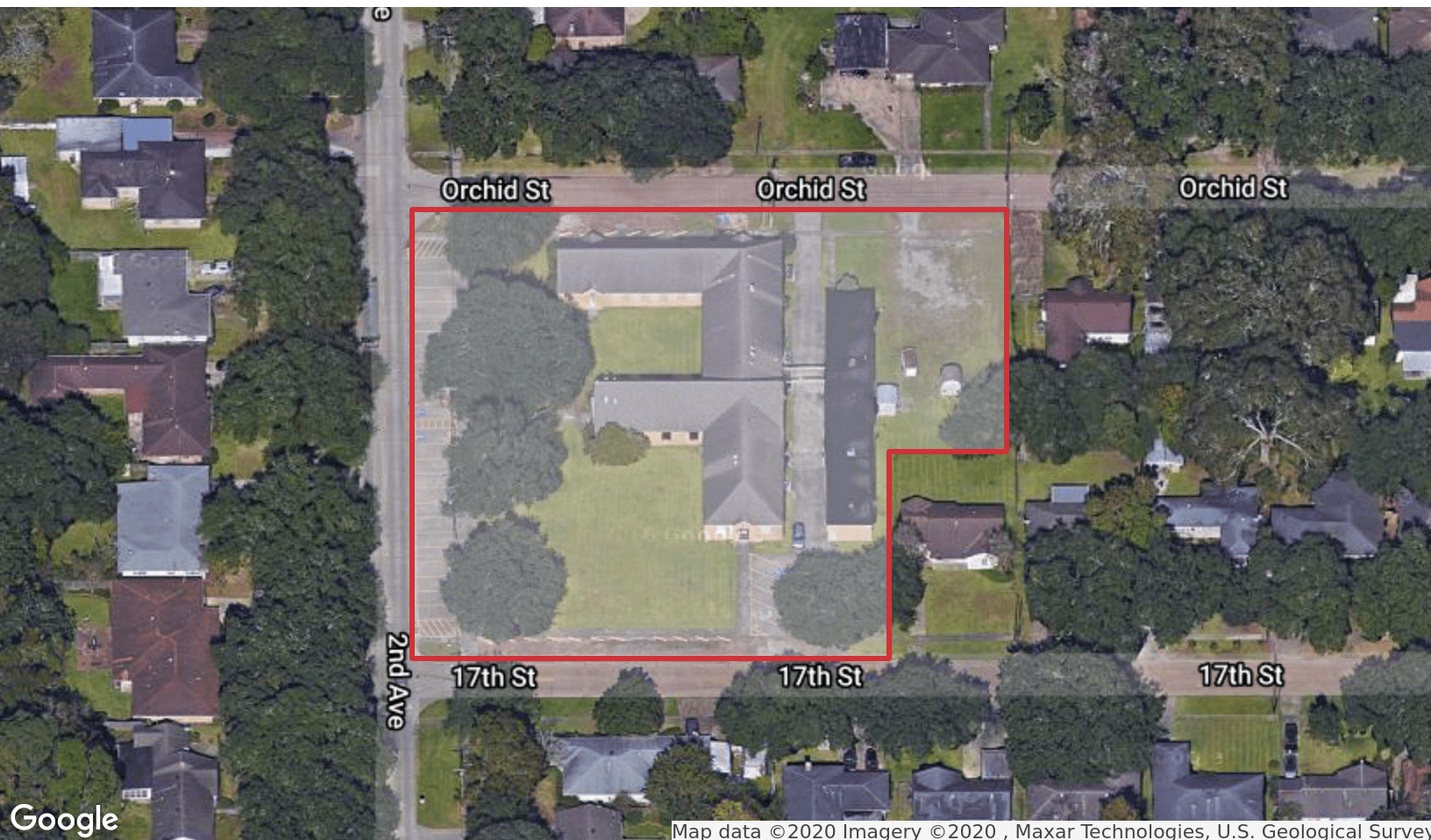
O: 337 310 7333 | C: 337 529 6710
joeldavidson@latterblum.com

1424 Ryan Street
Lake Charles, LA 70601
337 310 7333 tel
latterblum.com

CALL OR EMAIL FOR MORE INFORMATION

NO WARRANTY OR REPRESENTATION, EXPRESS OR IMPLIED, IS MADE AS TO THE ACCURACY OF THE INFORMATION CONTAINED HEREIN, AND THE SAME IS SUBMITTED SUBJECT TO ERRORS, OMISSIONS, CHANGE OF PRICE, RENTAL OR OTHER CONDITIONS, PRIOR SALE, LEASE OR FINANCING, OR WITHDRAWAL WITHOUT NOTICE, AND OF ANY SPECIAL LISTING CONDITIONS IMPOSED BY OUR PRINCIPALS NO WARRANTIES OR REPRESENTATIONS ARE MADE AS TO THE CONDITION OF THE PROPERTY OR ANY HAZARDS CONTAINED THEREIN ARE ANY TO BE IMPLIED. LICENSED IN LOUISIANA.

Location Maps



1424 Ryan Street
Lake Charles, LA 70601
337 310 7333 tel
latterblum.com

Property Floor Plan

