

# Industrial Buildings Available for Sale ±72,500 SQUARE FEET 1704-1734 S Vineyard Ave., Ontario, CA 91761



## PROPERTY FEATURES

- 3 Buildings totaling ±72,500 SF
- ±4.31 Acre Site
- Dock High and Ground Level Loading
- Fenced & Lighted Yard Area
- Fire Sprinklered (±32,500 SF Building Only)
- Two Street Entrances
- 20' Minimum Clearance Height
- 800 Amps, 277/480 Volt Power



**Don Kazanjian**  
909.373.2929  
dkazanjian@lee-assoc.com  
DRE # 00860886

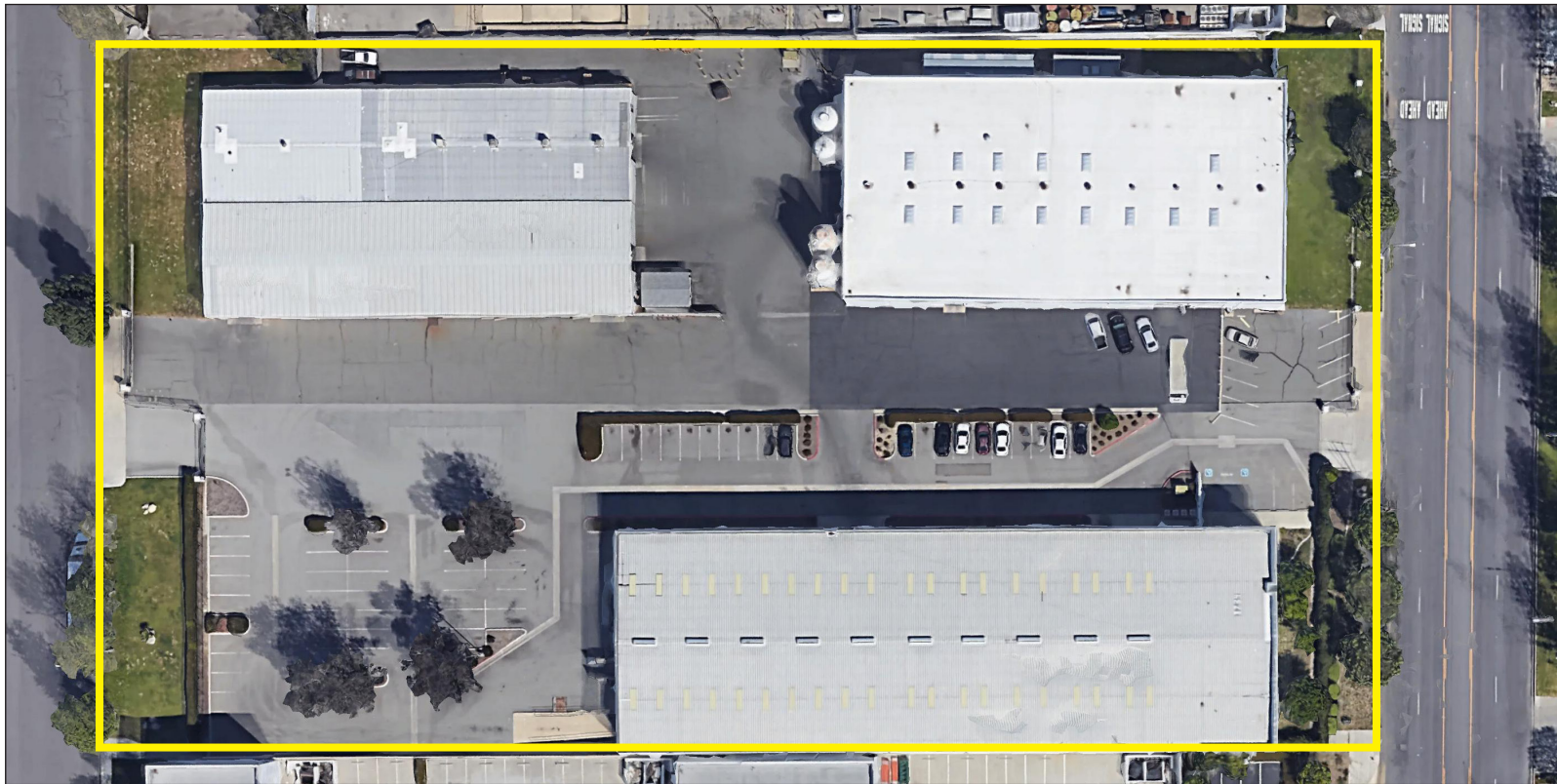
**Chris Bonney**  
562.568.2011  
cbonney@lee-associates.com  
DRE # 01028344

 **LEE & ASSOCIATES**  
COMMERCIAL REAL ESTATE SERVICES

**LEE & ASSOCIATES - ONTARIO**  
3535 Inland Empire Blvd.,  
Ontario, CA. 91764  
909.989.7771  
Corporate ID #00976995

All information furnished regarding property for sale, rental or financing is from sources deemed reliable, but no warranty or representation is made to the accuracy thereof and same is submitted to errors, omissions, change of price, rental or other conditions prior to sale, lease or financing or withdrawal without notice. No liability of any kind is to be imposed on the broker herein.

# Industrial Buildings Available for Sale ±72,500 SQUARE FEET 1704-1734 S Vineyard Ave., Ontario, CA 91761



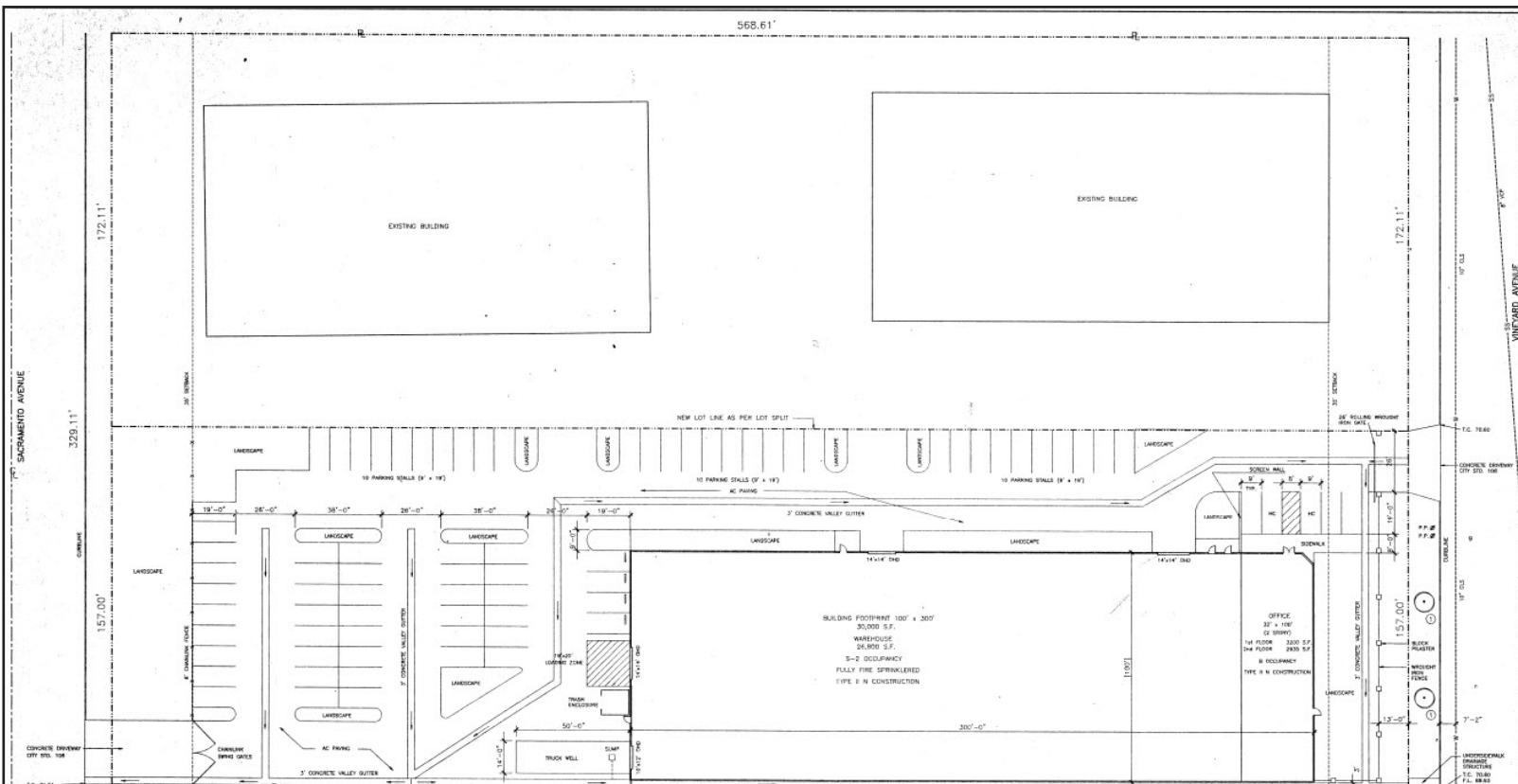
**LEE & ASSOCIATES - ONTARIO**  
3535 Inland Empire Blvd.,  
Ontario, CA. 91764  
909.989.7771  
Corporate ID #00976995

**Don Kazanjian**  
909.373.2929  
dkazanjian@lee-assoc.com  
DRE # 00860886

**Chris Bonney**  
562.568.2011  
cbonney@lee-associates.com  
DRE # 01028344

All information furnished regarding property for sale, rental or financing is from sources deemed reliable, but no warranty or representation is made to the accuracy thereof and same is submitted to errors, omissions, change of price, rental or other conditions prior to sale, lease or financing or withdrawal without notice. No liability of any kind is to be imposed on the broker herein.

# Industrial Buildings Available for Sale ±72,500 SQUARE FEET 1704-1734 S Vineyard Ave., Ontario, CA 91761



**LEE & ASSOCIATES**  
COMMERCIAL REAL ESTATE SERVICES

**LEE & ASSOCIATES - ONTARIO**  
3535 Inland Empire Blvd.,  
Ontario, CA. 91764  
909.989.7771  
Corporate ID #00976995

**Don Kazanjian**  
909.373.2929  
dkazanjian@lee-assoc.com  
DRE # 00860886

**Chris Bonney**  
562.568.2011  
cbonney@lee-associates.com  
DRE # 01028344

All information furnished regarding property for sale, rental or financing is from sources deemed reliable, but no warranty or representation is made to the accuracy thereof and same is submitted to errors, omissions, change of price, rental or other conditions prior to sale, lease or financing or withdrawal without notice. No liability of any kind is to be imposed on the broker herein.