

South Hill Retail Space for Lease

East Meridian Square

10312 120th Street E, Puyallup, WA 98374



- 750 sf (suite 10) of retail/office space
- New Mexican Restaurant Anchor
- Ample lighted parking
- Signalized intersection from East Meridian
- Other fine tenants include the The Exhibitors, Trellis Cafe, Cashe' Hair Salon, MassageWorks, Cartridge Doctor.

\$16.00 NNN per sf/year

DEMOGRAPHICS	Mile 1	Mile 3	Mile 5
Population	8,747	77,860	161,163
Average HH Income	\$67,685	\$84,006	\$83,343
Daytime Population	6,394	47,755	99,395

please visit www.johnson-commercial.com

This information supplied herein is from sources we deem reliable. It is provided without any representation, warranty or guarantee, expressed or implied as to its accuracy. Prospective Buyer or Tenant should conduct an independent investigation and verification of all matters deemed to be material, including, but not limited to, statements of income and expenses. Consult your attorney, accountant, or other professional advisor.

For more information, contact:
Timothy Johnson, Broker
253.589.9999, timothy@johnson-commercial.com
11120 Gravelly Lake Drive SW, Suite 2
Lakewood, WA 98499-1350 visit: www.johnson-commercial.com

JOHNSON
COMMERCIAL

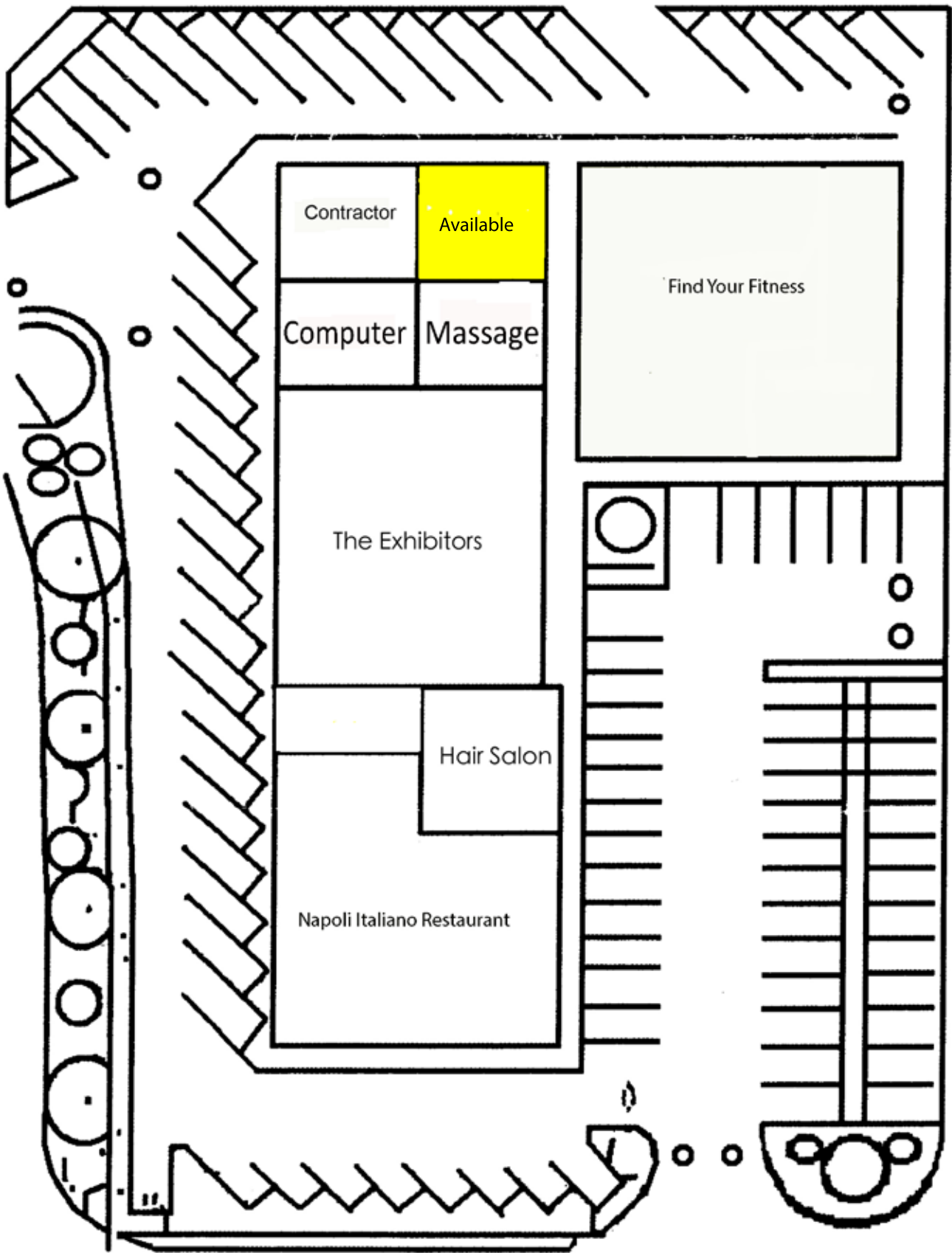


Pier 1 Imports

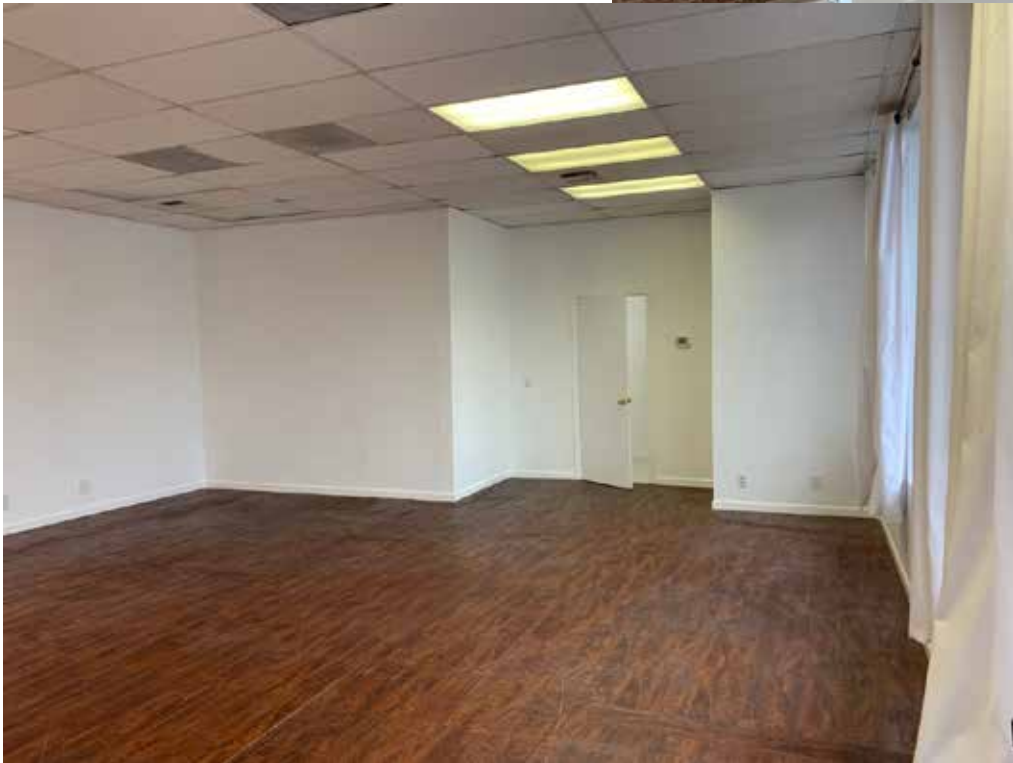
750sf
Space

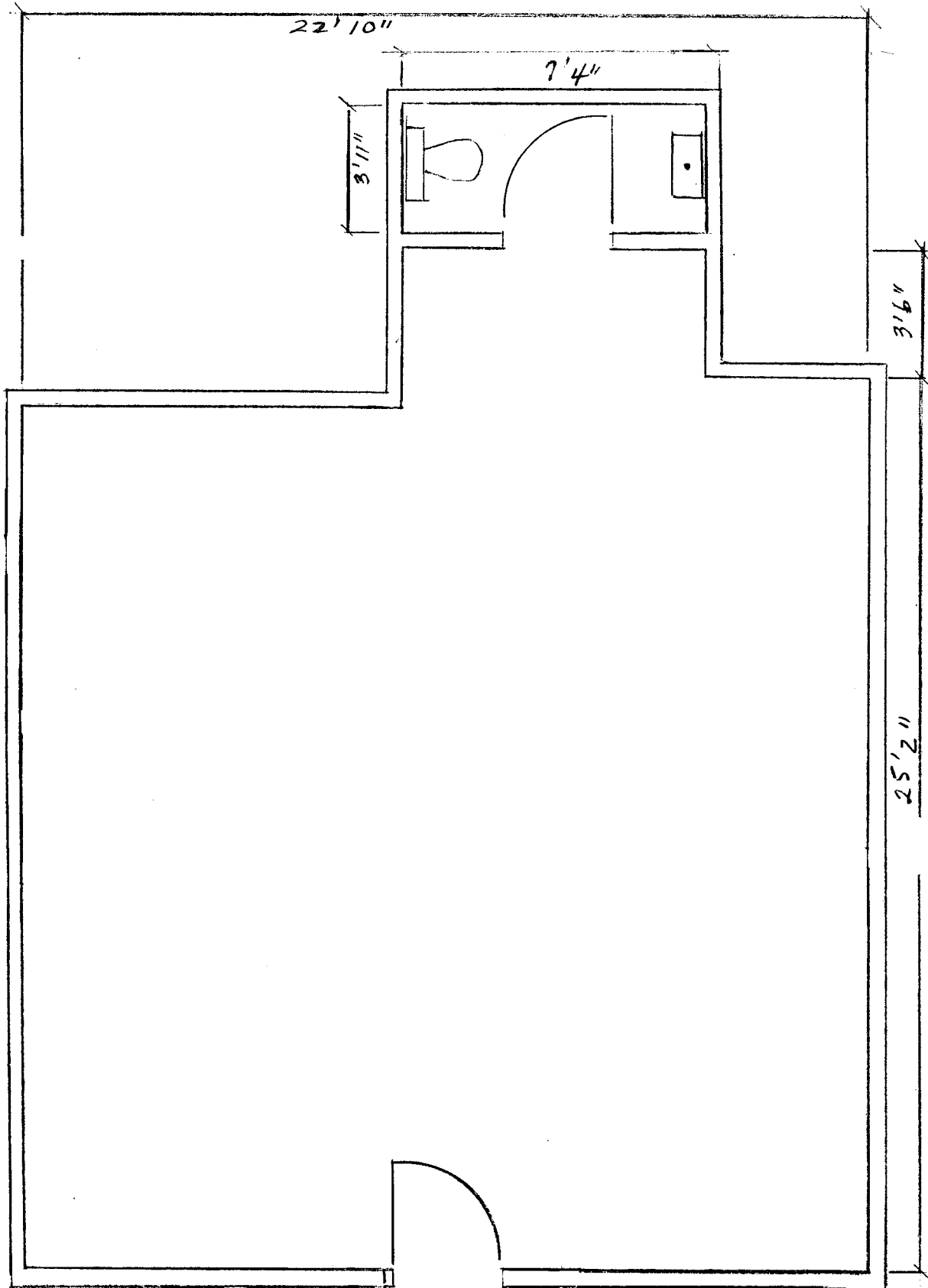
New
Retail





SITE PLAN





EAST MERIDIAN SQUARE · 10312 120th ST. E · PUYALLUP WA 98374
UNIT 10 · 750 SQ. FT.