



±6,720 SF INDUSTRIAL CONDO AVAILABLE

FOR SALE

383 EVERGREEN STREET | BENSENVILLE, IL 60106



ROSS LEHRMAN

847.588.5671

ross.lehrman@transwestern.com

JOE KARMIN

847.588.5670

joe.karmin@transwestern.com

JUSTIN LERNER, SIOR

847.588.5665

justin.lerner@transwestern.com

±6,720 SF INDUSTRIAL CONDO AVAILABLE

FOR SALE

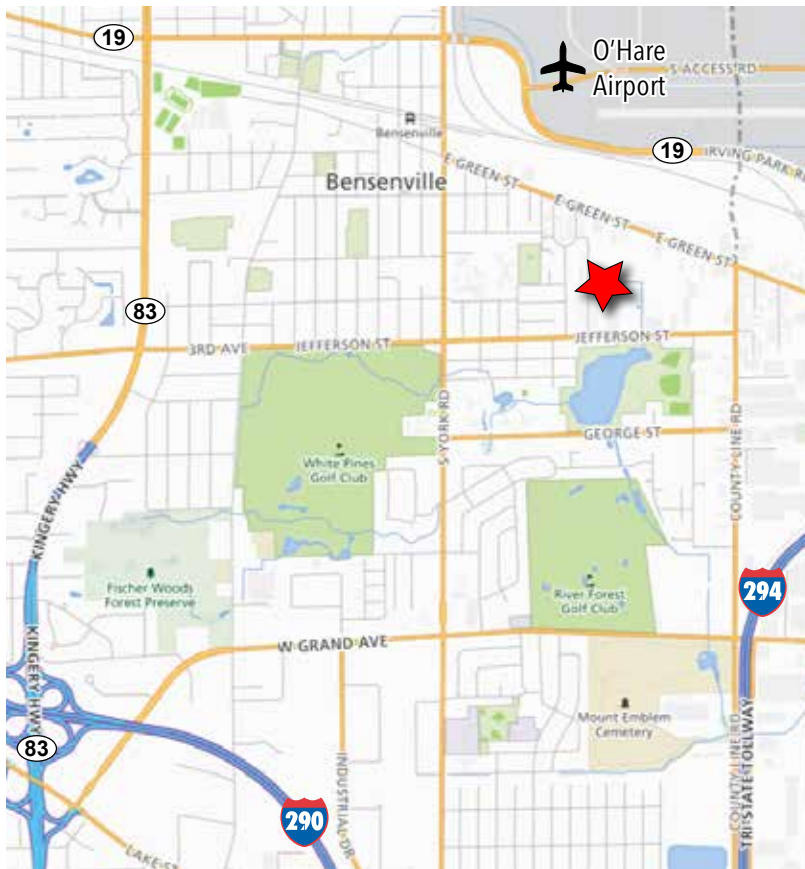
383 EVERGREEN STREET | BENSENVILLE, IL 60106

T TRANSWESTERN®



SPECIFICATIONS

- Building Size: ±6,720 SF
- Land Area: ±0.47 AC
- Office Area: ±1,200 SF
- Ceiling Height: ±15'
- Loading: 2 Int. Docks / 1 Oversized DID
- Construction: Masonry
- Year Built: 1977
- Power: 200 Amps
- Trailer Parking: ±5 Spots
- Heating: Gas
- Sale Price: \$375,000



HIGHLIGHTS

- Low DuPage County taxes
- Trailer parking available
- Floor drains in warehouse
- Excellent proximity to O'Hare Airport
- Great access to Route 83 and major expressways

ROSS LEHRMAN

847.588.5671

ross.lehrman@transwestern.com

JOE KARMIN

847.588.5670

joe.karmin@transwestern.com

JUSTIN LERNER, SIOR

847.588.5665

justin.lerner@transwestern.com

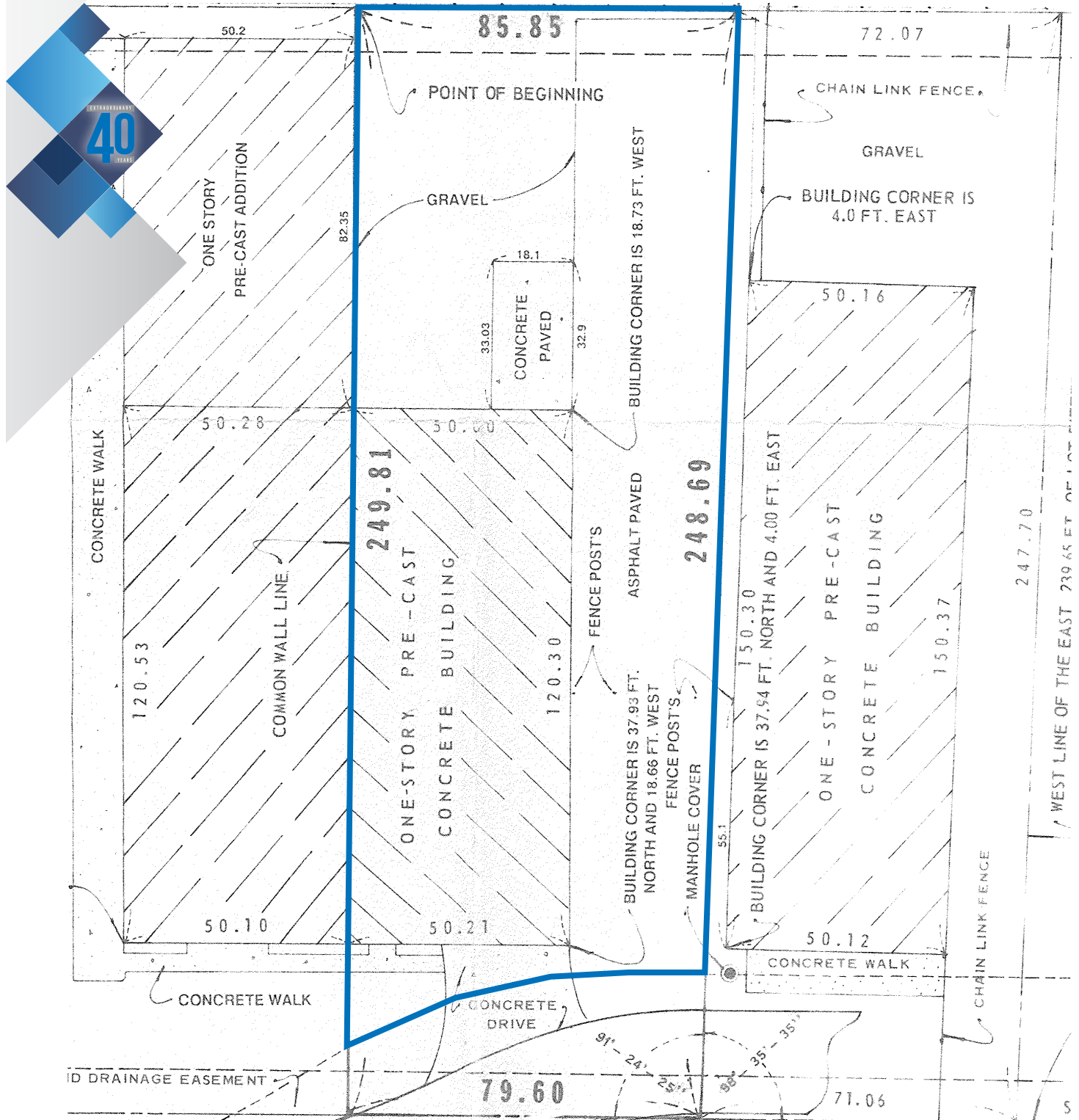
The information provided herein was obtained from sources believed reliable; however, Transwestern makes no guarantees, warranties or representations as to the completeness or accuracy thereof. The presentation of this property is submitted subject to errors, omissions, change of price or conditions, prior sale or lease, or withdrawal without notice. Copyright © 2018 Transwestern.

±6,720 SF INDUSTRIAL CONDO AVAILABLE

FOR SALE

383 EVERGREEN STREET | BENSENVILLE, IL 60106

T TRANSWESTERN®



ROSS LEHRMAN

847.588.5671

ross.lehrman@transwestern.com

JOE KARMIN

847.588.5670

joe.karmin@transwestern.com

JUSTIN LERNER, SIOR

847.588.5665

justin.lerner@transwestern.com

The information provided herein was obtained from sources believed reliable; however, Transwestern makes no guarantees, warranties or representations as to the completeness or accuracy thereof. The presentation of this property is submitted subject to errors, omissions, change of price or conditions, prior sale or lease, or withdrawal without notice. Copyright © 2018 Transwestern.