



Soldano Building

4233 21ST AVENUE W, SEATTLE, WA

FOR LEASE



AVAILABLE now, 2nd floor \pm 4,224 SF
divisible to \pm 3,000 SF

OFFICE flex use

ELEVATOR served

ONSITE parking

ZONING IG2 U/65

9' 7" ceiling height

3 phase power

FLOOR plan attached

COREY SOLLUM

Vice President

206.296.9620

corey.sollom@kidder.com

FOR LEASE

Soldano Building

4233 21ST AVENUE W, SEATTLE, WA



The Soldano Building, located across the street from Fishermen's Terminal, is a highly functional and versatile building.

LOCATION HIGHLIGHTS

10 minutes to downtown Seattle

Close proximity to the Magnolia, Queen Anne and Ballard neighborhoods

Less than 1 mile to Ballard Locks

Discovery Park nearby

Abundant restaurants and bars in nearby Ballard

Chinook's restaurant within walking distance

COREY SOLLUM

Vice President

206.296.9620

corey.sollom@kidder.com

KIDDER.COM

This information supplied herein is from sources we deem reliable. It is provided without any representation, warranty, or guarantee, expressed or implied as to its accuracy. Prospective Buyer or Tenant should conduct an independent investigation and verification of all matters deemed to be material, including, but not limited to, statements of income and expenses. Consult your attorney, accountant, or other professional advisor.

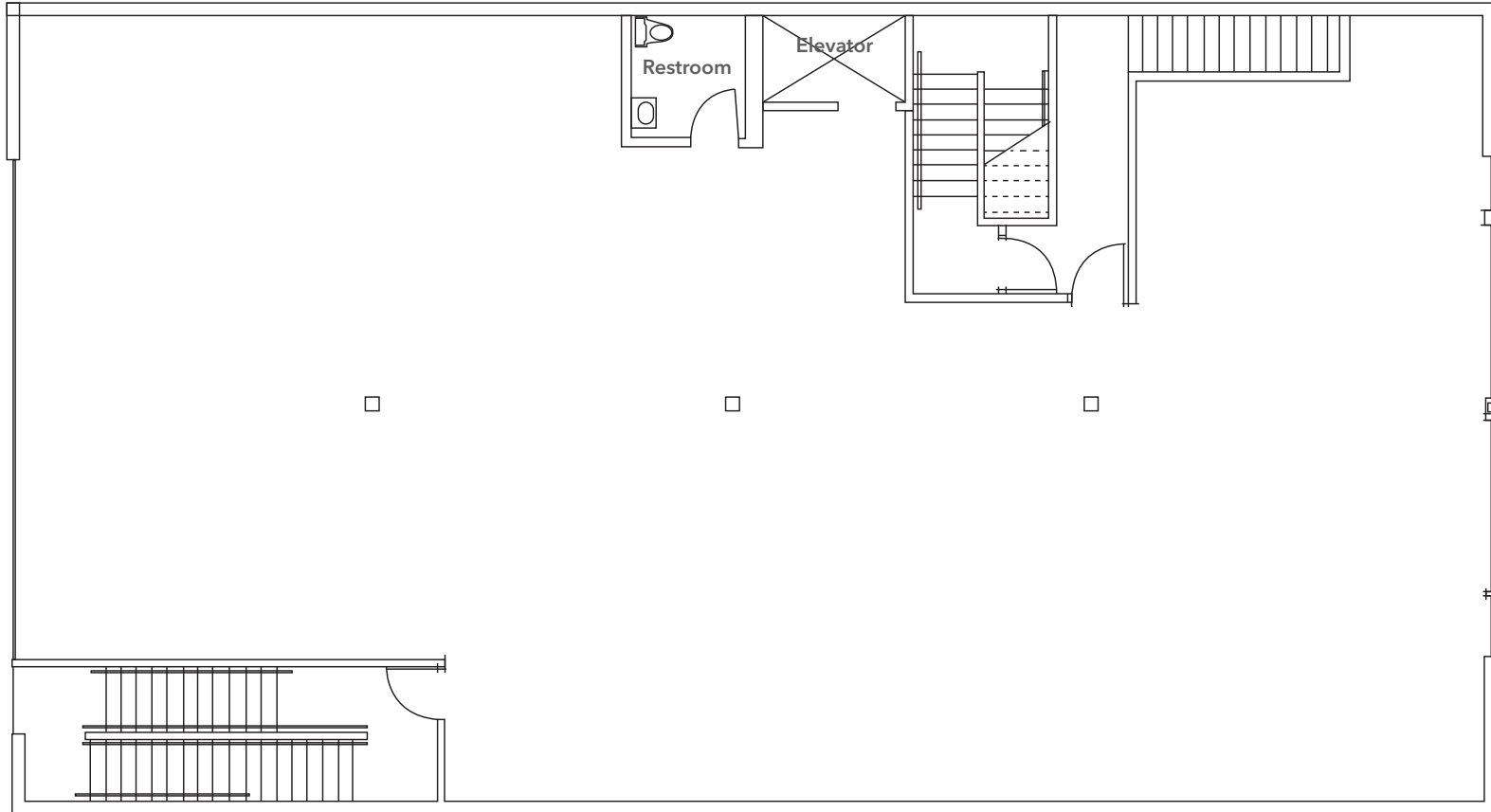
 **Kidder
Mathews**

FOR LEASE

Soldano Building

4233 21ST AVENUE W, SEATTLE, WA

Floor 2



COREY SOLLUM

Vice President

206.296.9620

corey.sollom@kidder.com

KIDDER.COM

This information supplied herein is from sources we deem reliable. It is provided without any representation, warranty, or guarantee, expressed or implied as to its accuracy. Prospective Buyer or Tenant should conduct an independent investigation and verification of all matters deemed to be material, including, but not limited to, statements of income and expenses. Consult your attorney, accountant, or other professional advisor.

