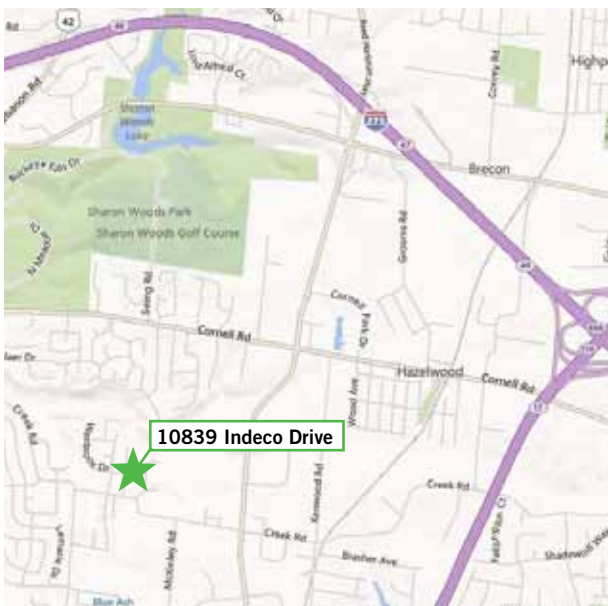




For Sale or Lease in Blue Ash



- 9,366 SF available
- 7,000 SF air-conditioned office
- 2,366 SF warehouse
- 1.212 acres
- Expandable
- Well maintained building in desirable Blue Ash
- Easy access to I-71 & I-275

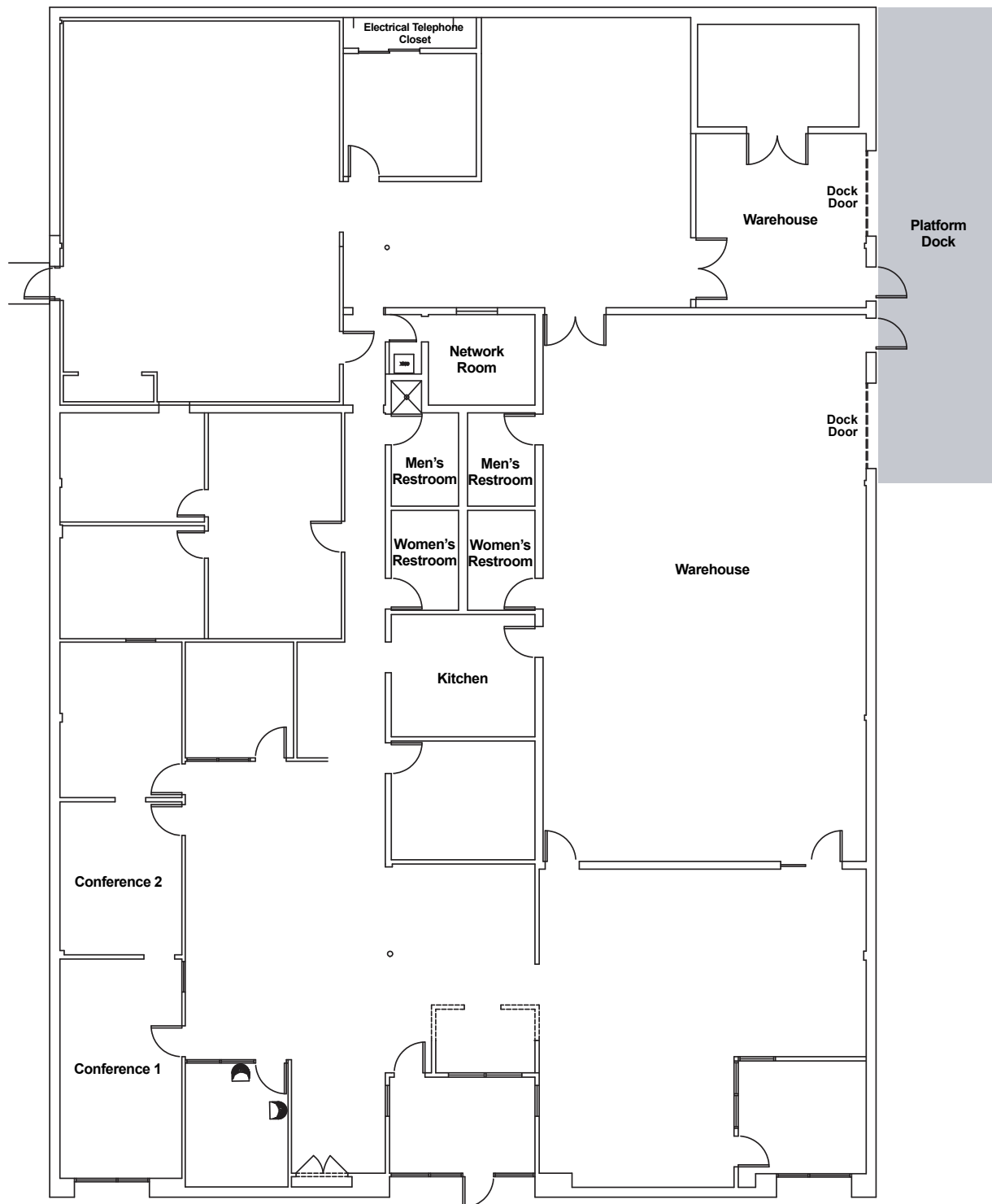
For more information, contact:

Ben McNab, SIOR, CCIM
513-763-3019
ben.mcnab@cassidyurley.com

Skylar Stein
513-763-3047
skylar.stein@cassidyurley.com

221 E Fourth Street, Suite 2600
Cincinnati, OH 45202
513-421-4884
cassidyurleyindustrial.com

Floor Plan



For more information, contact:

Ben McNab, SIOR, CCIM
513-763-3019
ben.mcnab@cassidyurley.com

Skylar Stein
513-763-3047
skylar.stein@cassidyurley.com

221 E Fourth Street, Suite 2600
Cincinnati, OH 45202
513-421-4884
cassidyurleyindustrial.com

Specifications

Total Available:	9,366 SF	Lighting:	Fluorescent
Office Area:	7,000 SF	HVAC:	Air-conditioned
Warehouse Area:	2,366 SF	Office:	Gas forced air units
Land Area:	1.212 acres	Warehouse:	
Year Built:	1980	Electric:	200 amp; 240 volt; three phase
Construction Type:	Brick and block	Zoning:	M-2, General Industrial
Roof:	Pre-engineered metal	Miscellaneous:	Well maintained building Desirable location Expandable
Ceiling Height:	12'	Operating Expenses:	\$1.15/sf/year
Dock Doors:	Two (2) platform	Lease Rate:	\$6.95/SF NNN
		Sale Price:	\$599,000 (\$63.95/SF)

Aerial



For more information, contact:

Ben McNab, SIOR, CCIM
513-763-3019
ben.mcnab@cassidyurley.com

Skylar Stein
513-763-3047
skylar.stein@cassidyurley.com

221 E Fourth Street, Suite 2600
Cincinnati, OH 45202
513-421-4884
cassidyurleyindustrial.com

Regional Map



For more information, contact:

Ben McNab, SIOR, CCIM
513-763-3019
ben.mcnab@cassidyturley.com

Skylar Stein
513-763-3047
skylar.stein@cassidyturley.com

221 E Fourth Street, Suite 2600
Cincinnati, OH 45202
513-421-4884
cassidyturleyindustrial.com