

# INDUSTRIAL/RETAIL FOR LEASE

**2010 E. South Street**

Long Beach, CA 90805

# Voit

REAL ESTATE SERVICES



## Property Features:

- Great Corner Location at Signalized Intersection (South Street & Cherry Avenue)
- Average Daily Traffic Volume
  - \*South Street: 31,601
  - \*Cherry Avenue: 25,300
- Freestanding Building with Large Air Conditioned Retail/Showroom Space and Warehouse
- Billboard Style Signage
- Additional 500 SF Air Conditioned room can be used as Showroom/Retail Space or Office

## Property Highlights:

- 4,080 SF Building
- 1,730 SF Showroom (Air Conditioned)
- 260 SF Office (Air Conditioned)
- 18,214 SF Lot
- 14' Clearance
- Built in 1971
- 30 Car Parking Spaces
- 5 Ground Level Loading Doors
- Available Immediately

**Derek deVrè**  
Vice President  
Lic #01457028  
424.329.7505  
ddevre@voitco.com

**Patrick Haddan**  
Associate  
Lic #01923491  
424.329.7506  
phaddan@voitco.com

**Lease Rate: \$1.23 PSF/Month Modified Gross**

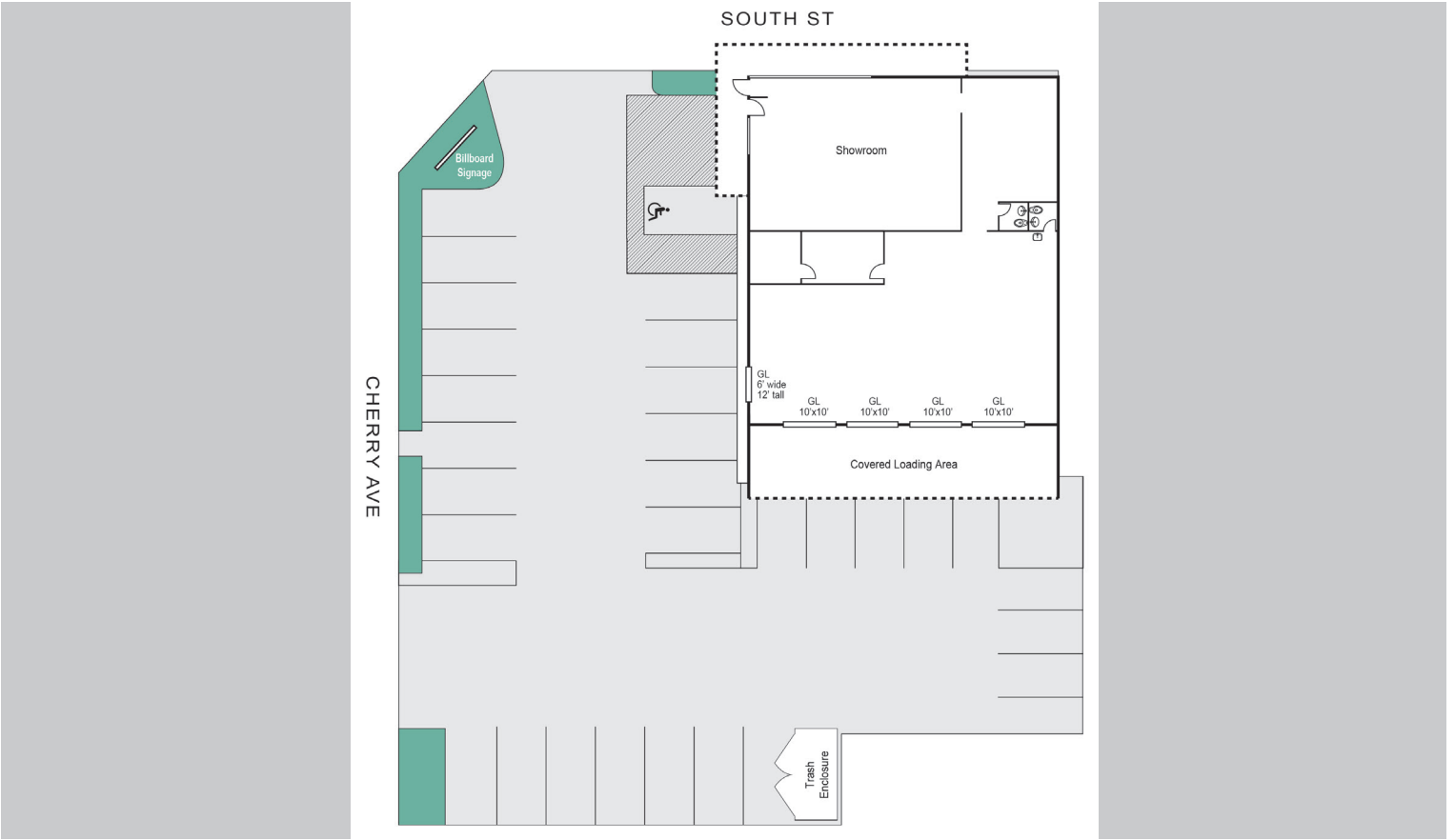
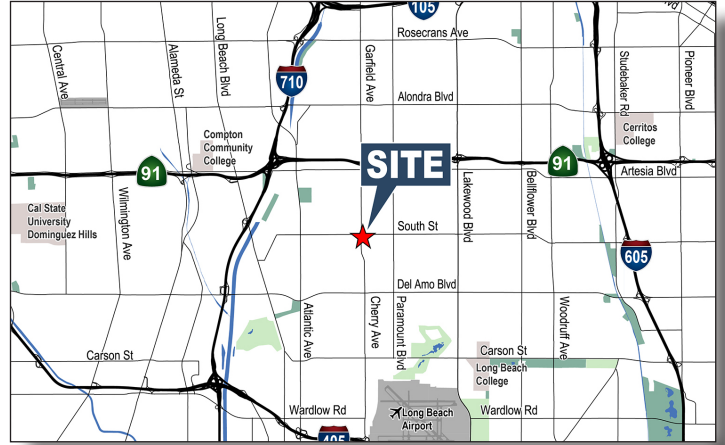
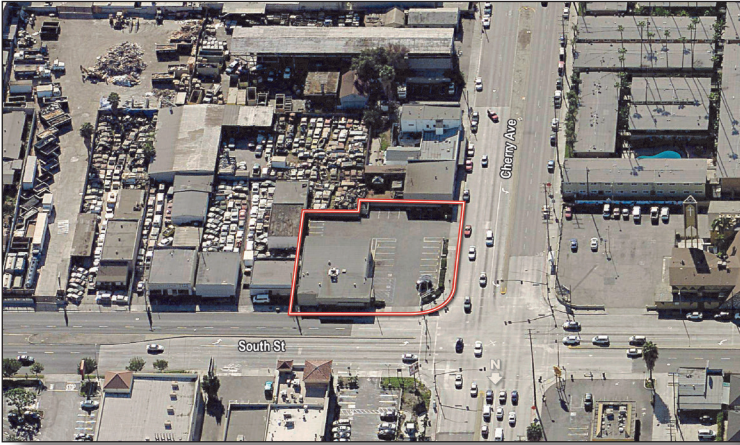
# INDUSTRIAL/RETAIL FOR LEASE

## 2010 E. South Street

Long Beach, CA 90805

# Voit

REAL ESTATE SERVICES



**Derek deVre**  
Vice President  
Lic #01457028  
424.329.7505  
ddevre@voitco.com

**Patrick Haddan**  
Associate  
Lic #01923491  
424.329.7506  
phaddan@voitco.com

1025 West 190th Street, Suite 350, Los Angeles, CA 90248 • 424.329.7500 • 424.233.0736 Fax • Lic #01333376 | www.voitco.com



# INDUSTRIAL/RETAIL FOR LEASE

**2010 E. South Street**

Long Beach, CA 90805

# Voit

REAL ESTATE SERVICES



**Derek deVrè**  
Vice President  
Lic #01457028  
424.329.7505  
ddevre@voitco.com

**Patrick Haddan**  
Associate  
Lic #01923491  
424.329.7506  
phaddan@voitco.com

1025 West 190th Street, Suite 350, Los Angeles, CA 90248 • 424.329.7500 • 424.233.0736 Fax • Lic #01333376 | [www.voitco.com](http://www.voitco.com)