

East Valley Dream

18715 E Valley Hwy
Kent, WA



Contact

Christopher J. Corr, SIOR
206.248.7324
ccorr@kiddermathews.com

Jim Kidder, SIOR
206.248.7328
jkidder@kiddermathews.com

#1 Location in Kent

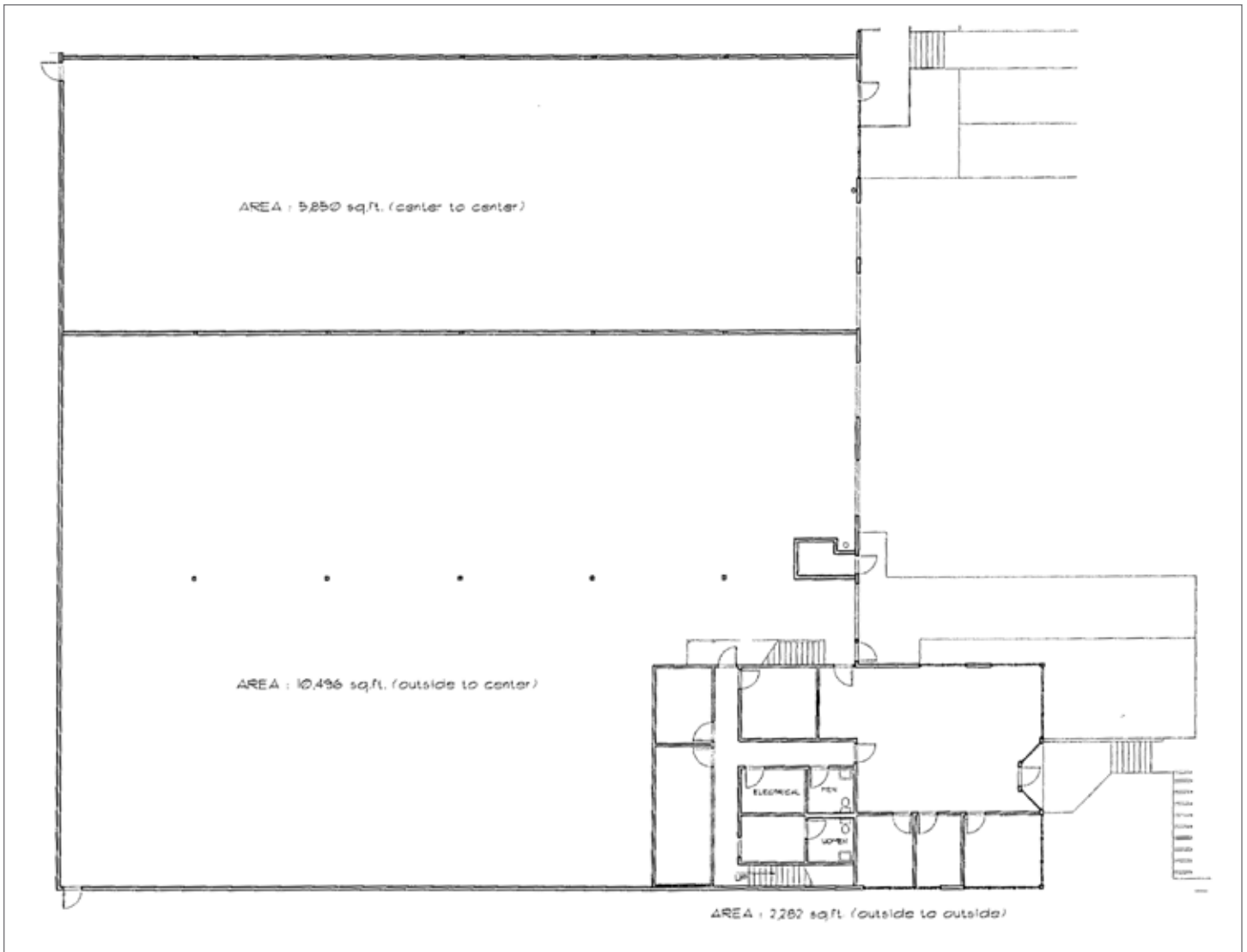
- 18,628 SF total footprint
- 2,282 SF office
- 2,303 SF mezzanine office
- \$9,400.00 per month, NNN
- Incredible exposure / identity
- 24' clear height
- Abundant parking
- 4 dock-high doors
- 1 Grade-level door
- Available March 1, 2014

Location



East Valley Dream

First Floor



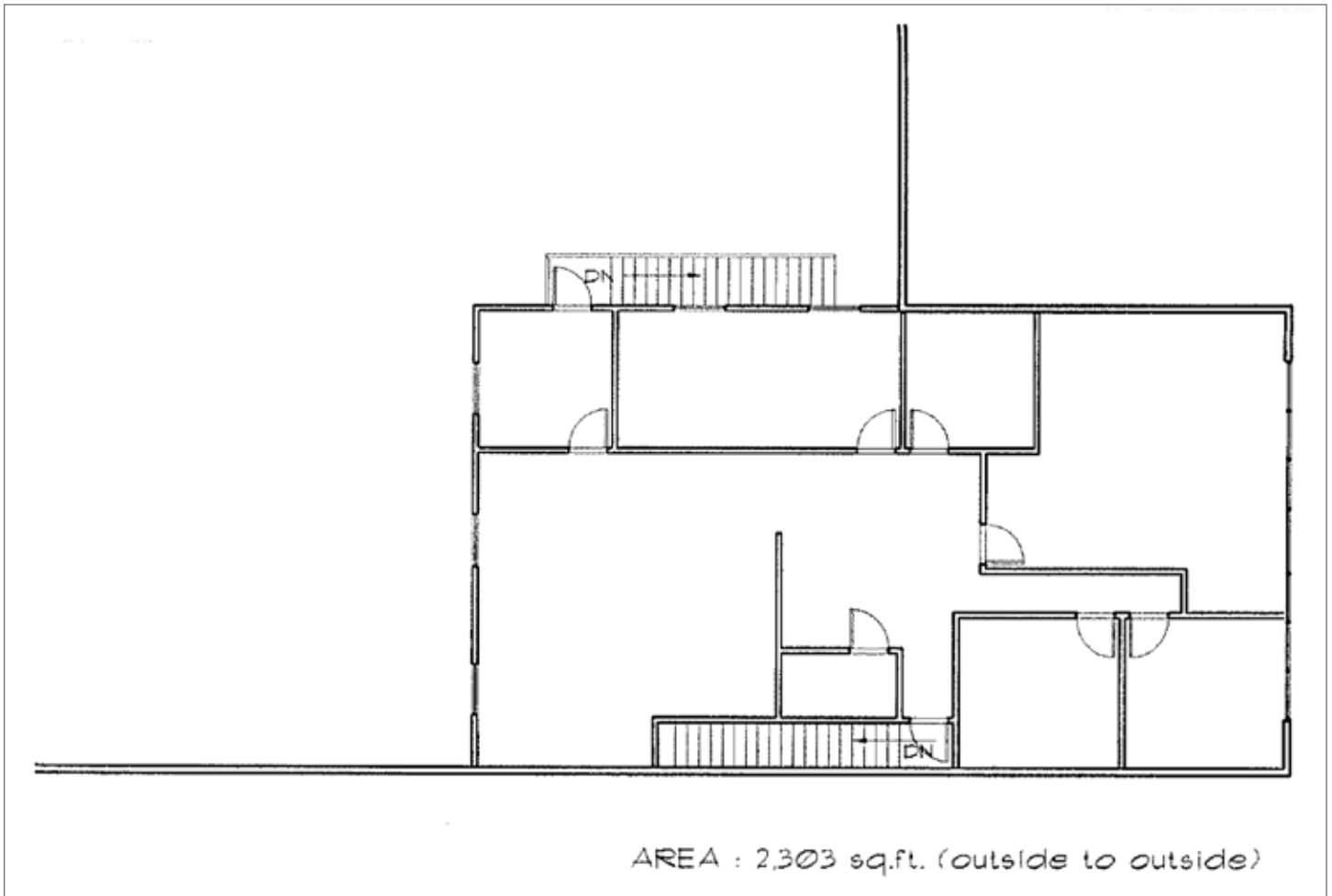
Contact

Christopher J. Corr, SIOR
206.248.7324
ccorr@kiddermathews.com

Jim Kidder, SIOR
206.248.7328
jkidder@kiddermathews.com

East Valley Dream

Second Floor



Contact

Christopher J. Corr, SIOR
206.248.7324
ccorr@kiddermathews.com

Jim Kidder, SIOR
206.248.7328
jkidder@kiddermathews.com