

# The Esplanade Business Park

San Juan Capistrano, CA



**FOR LEASE**

Industrial and Office Units Available  
33155, 33157, 33159 & 33161 Camino Capistrano

Eric Tse  
949.557.5018  
etse@kiddermathews.com  
LIC #01476614

[kiddermathews.com](http://kiddermathews.com)

 **Kidder  
Mathews**

# The Esplanade Business Park

San Juan Capistrano, CA



## LOCATION HIGHLIGHTS

Office, industrial, medical, and retail suites available

Dock high loading capability for industrial units

Immediate occupancy

Freeway signage

Convenient access to 5 freeway and San Juan Capistrano amenities

## Availabilities

33159 SUITE A

1,250 SF

Open floor plan layout.

33159 SUITE D

1,250 SF

(4) offices and (1) conference room.

33161 SUITE G

1,763 SF

Double-door entrance & (6) offices

### Eric Tse

949.557.5018

etse@kiddermathews.com

LIC #01476614

**kiddermathews.com**



# The Esplanade Business Park

San Juan Capistrano, CA



**Eric Tse**  
949.557.5018  
etse@kiddermathews.com  
LIC #01476614

[kiddermathews.com](http://kiddermathews.com)



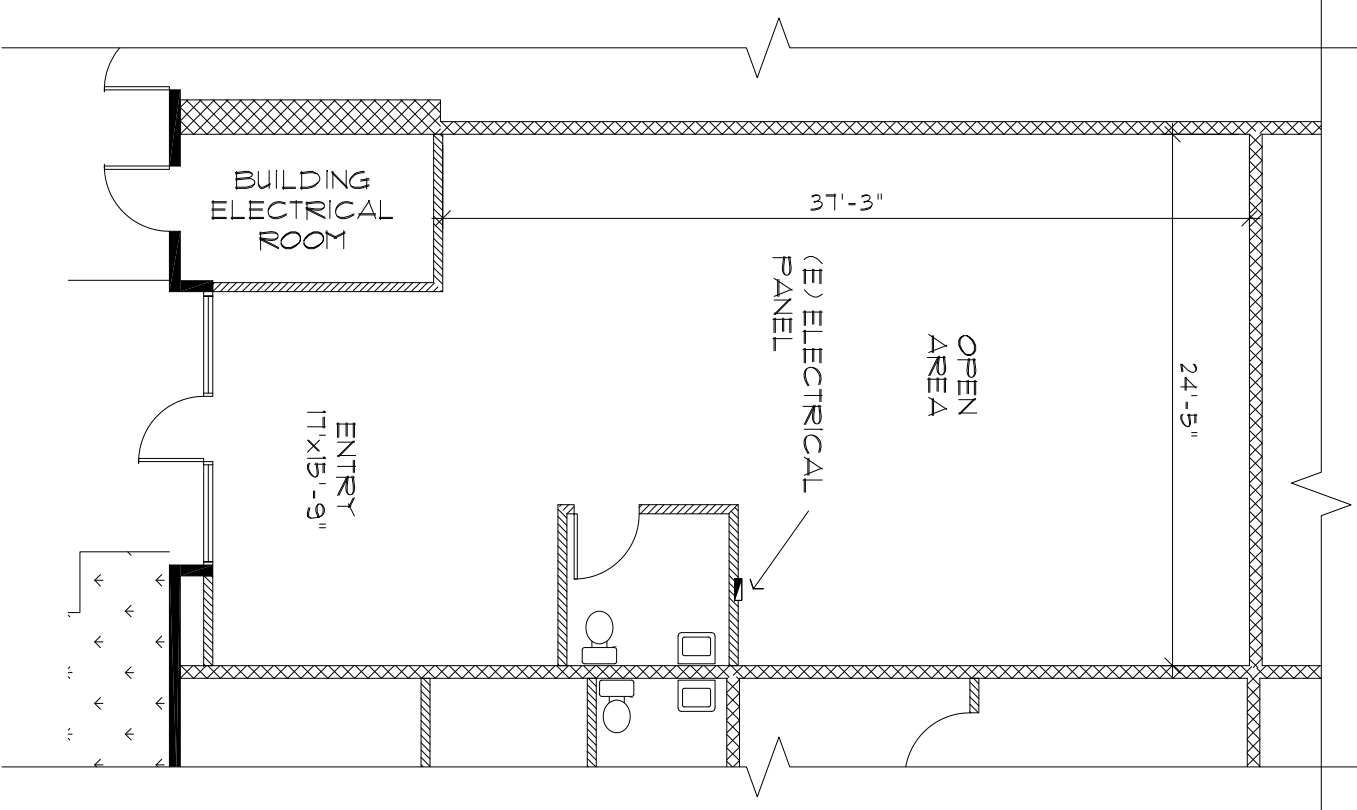
This information supplied herein is from sources we deem reliable. It is provided without any representation, warranty or guarantee, expressed or implied as to its accuracy. Prospective Buyer or Tenant should conduct an independent investigation and verification of all matters deemed to be material, including, but not limited to, statements of income and expenses. Consult your attorney, accountant, or other professional advisor.

# The Esplanade Business Park

San Juan Capistrano, CA

## Site Plan | 33159 Camino Capistrano, Suite A

1,250 SF



**Eric Tse**  
949.557.5018  
etse@kiddermathews.com  
LIC #01476614

[kiddermathews.com](http://kiddermathews.com)



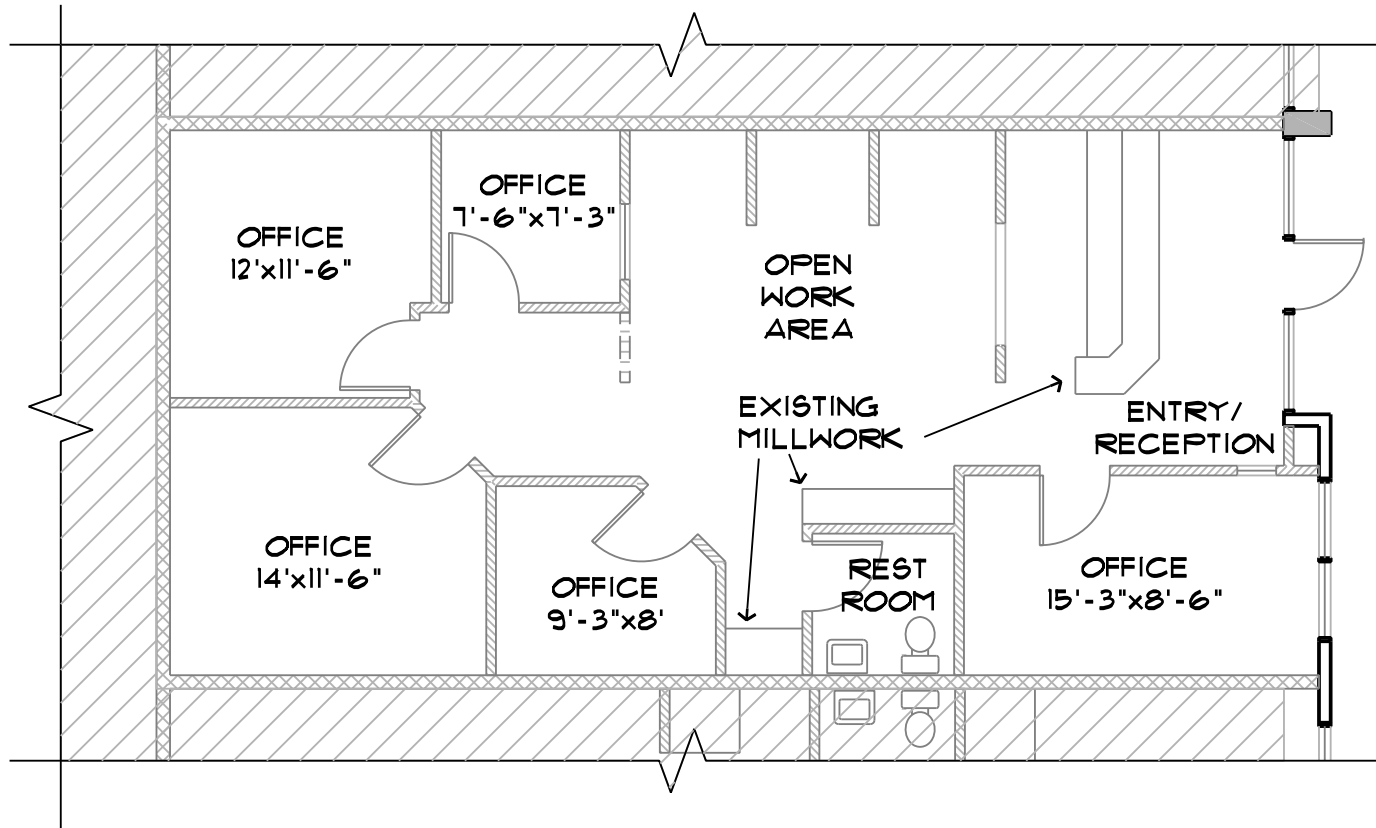
This information supplied herein is from sources we deem reliable. It is provided without any representation, warranty or guarantee, expressed or implied as to its accuracy. Prospective Buyer or Tenant should conduct an independent investigation and verification of all matters deemed to be material, including, but not limited to, statements of income and expenses. Consult your attorney, accountant, or other professional advisor.

# The Esplanade Business Park

San Juan Capistrano, CA

## Site Plan | 33159 Camino Capistrano, Suite D

1,250 SF



**Eric Tse**  
949.557.5018  
etse@kiddermathews.com  
LIC #01476614

[kiddermathews.com](http://kiddermathews.com)

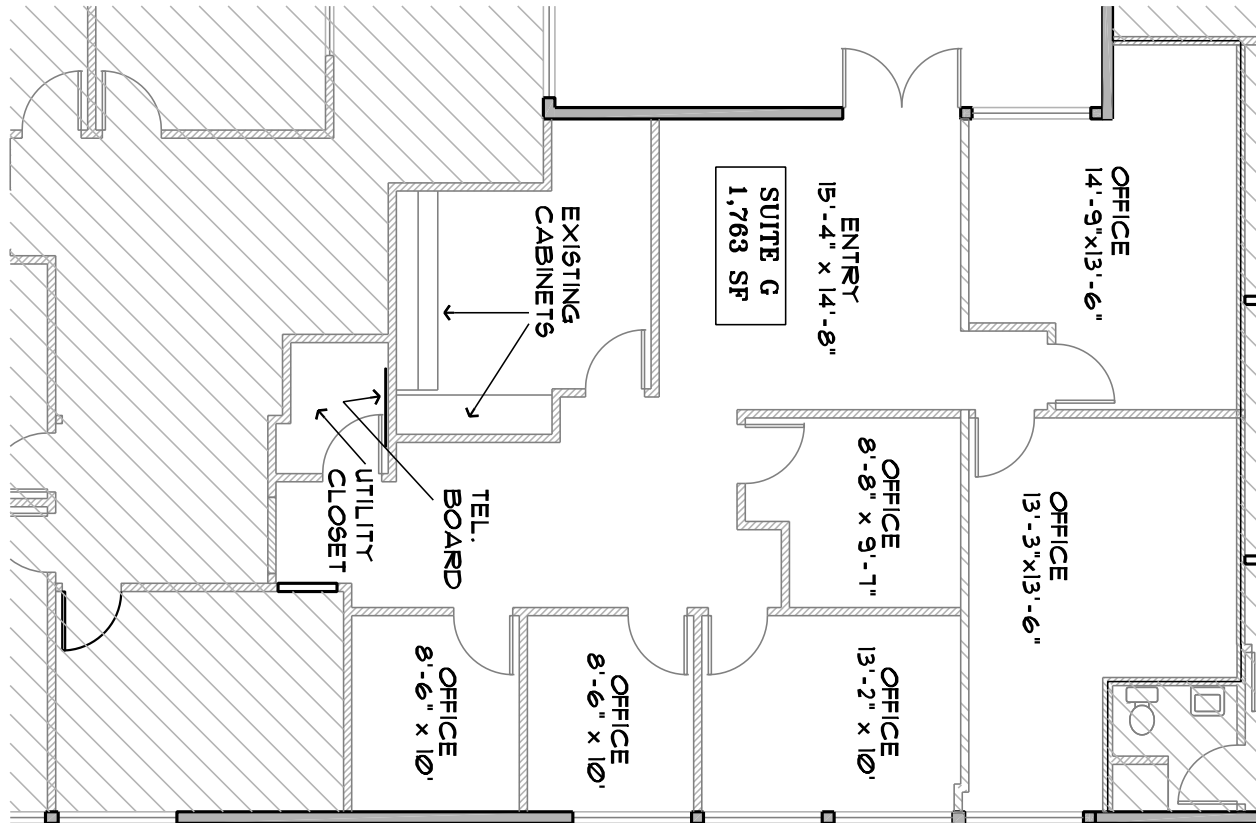


# The Esplanade Business Park

San Juan Capistrano, CA

## Site Plan | 33161 Camino Capistrano, Suite G

1,763 SF



**Eric Tse**  
949.557.5018  
etse@kiddermathews.com  
LIC #01476614

[kiddermathews.com](http://kiddermathews.com)

