

Polar Plaza

2100 & 2112 E Thayer Ave - Bismarck, ND

2100 - \$1,600 mo. / 2112 - \$825 mo.



Kyle Holwagner, CCIM, SIOR
701.400.5373
Kyle@DanielCompanies.com

Kristyn Steckler, Senior Client Coordinator
701.527.0138
Kristyn@DanielCompanies.com

DanielCompanies.com

Executive Summary for Lease

Address:	2100 E Thayer Ave	2112 E Thayer Ave
Property Name:	Polar Plaza Strip Mall	Polar Plaza Strip Mall
Date Available:	Now	Now
Lease Term:	3 Years	3 Years
Lease Rate:	\$1,600 mo.	\$825 mo.
Approximate SF:	1,620 sf	590 sf
Tenant Responsibilities:	Electricity and Gas, Pro-rated share of water, snow removal,	Full Service
<p>Broker does not guarantee the information describing this property. Interested parties are advised to independently verify the information through personal inspectors or with appropriate professionals.</p>		

Suite 2100: Lease: \$1,600 mo.

- Previous use: Salon
- Sewer / Plumbing throughout
- (2) Restrooms
- Large open reception / work area
- 3 separate offices

Suite 2112: Lease: \$825 mo.

- (1) Restroom
- (1) Private Office
- Open reception / work area

2018 POPULATION			AVERAGE HH INCOME			MEDIAN AGE		
1 MILE	3 MILE	5 MILE	1 MILE	3 MILE	5 MILE	1 MILE	3 MILE	5 MILE
11,905	60,031	89,593	\$58,165	\$72,367	\$81,956	37.8	39.0	38.4

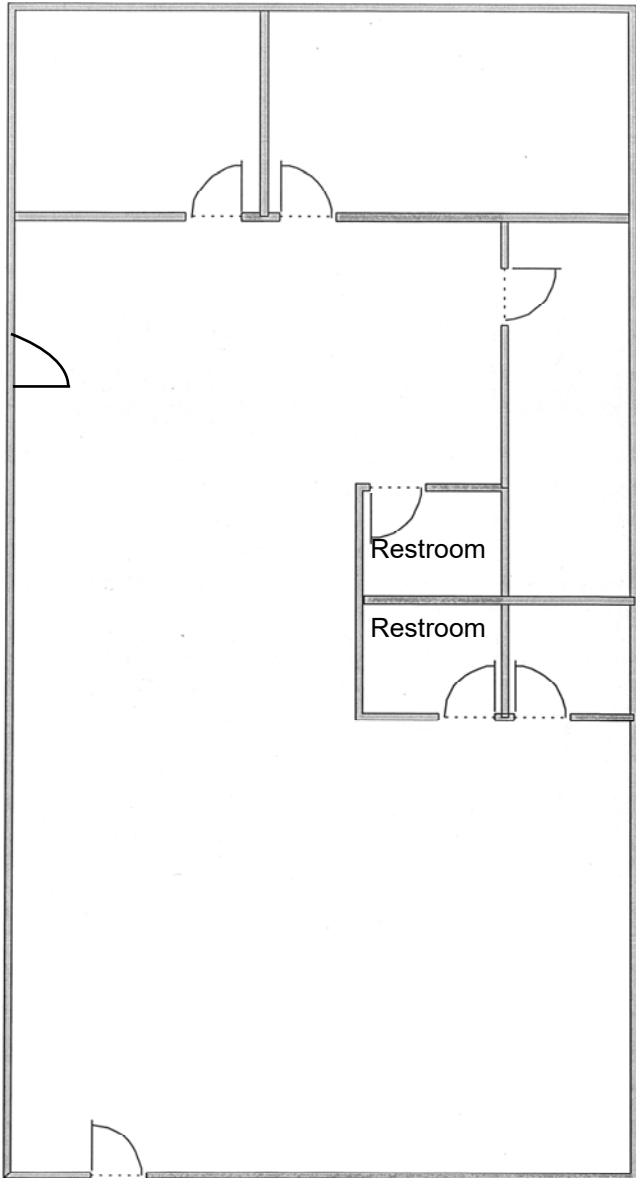
Broker does not guarantee the information describing this property. Interested parties are advised to independently verify the information through personal inspectors or with appropriate professionals.



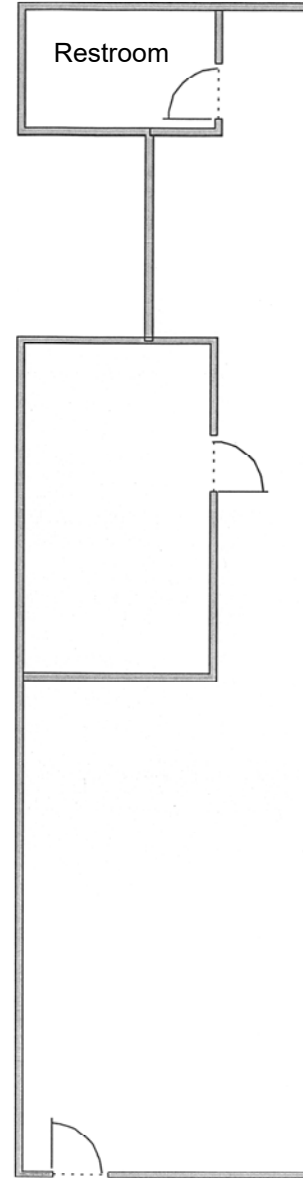
Kyle Holwagner, CCIM, SIOR
701.400.5373
Kyle@DanielCompanies.com

Kristyn Steckler, Senior Client Coordinator
701.527.0138
Kristyn@DanielCompanies.com

2100 E Thayer Ave



2112 E Thayer Ave



** For visual purposes only,
actual floor plan may vary.





DANIEL COMPANIES

The Leader in Commercial Real Estate



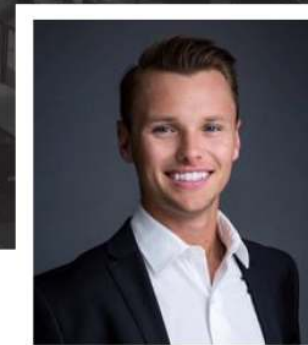
Bill Daniel
CCIM, Broker

701.220.2455
Bill@DanielCompanies.com



Kyle Holwagner
CCIM, SIOR

701.400.5373
Kyle@DanielCompanies.com



Taylor Daniel
Commercial REALTOR®

701.391.4262
Taylor@DanielCompanies.com

Serving commercial real estate clients with unmatched market knowledge, experience and a well-deserved reputation for integrity. They know the Bismarck-Mandan commercial real estate market better than anyone.

Powerful Team. Powerful Process. Powerful Results.