

For Sale

Development Opportunity

LA Highway 10, New Roads, LA 70760



The information contained in the following Offering Memorandum is proprietary and strictly confidential. It is intended to be reviewed only by the party receiving it from NAI Latter & Blum Real Estate Brokerage and should not be made available to any other person or entity without the written consent of Broker. This Offering Memorandum has been prepared to provide summary, unverified information to prospective purchasers, and to establish only a preliminary level of interest in the subject property. The information contained herein is not a substitute for a thorough due diligence investigation. Broker has not made any investigation, and makes no warranty or representation, with respect to the income or expenses for the subject property, the future projected financial performance of the property, the size and square footage of the property and improvements, the presence or absence of contaminating substances, PCB's or asbestos, the compliance with State and Federal regulations, the physical condition of improvements thereon, or the financial condition or business prospects of any tenant, or any tenant's plans or intentions to continue occupancy of the subject property.

The information contained in the Offering Memorandum has been obtained from sources we believe to be reliable; however, Broker has not verified, and will not verify, any of the information contained herein, nor has Broker conducted any investigation regarding these matters and makes no warranty or representation whatsoever regarding the accuracy or completeness of the information provided. All potential purchasers must take appropriate measures to verify all of the information set forth herein.

For more information

Grey Hammett III

O: 225 295 0800
grey@latterblum.com

Parker Cavin

O: 225 295 0800
pcavin@latterblum.com

Brooks Lawley

O: 225 295 0800 x85386
brookslawley@latterblum.com

Table of Contents

4 Section 1
Property Information

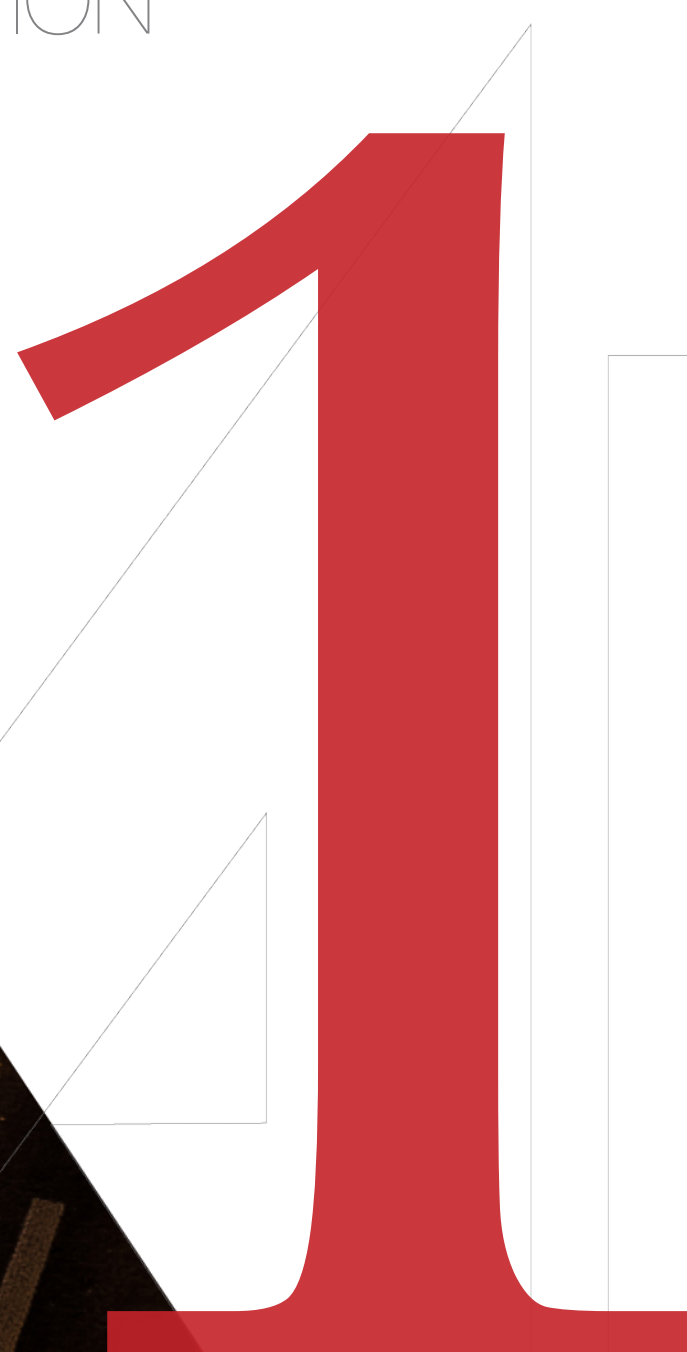
7 Section 2
Location Information

11 Section 3
Additional Information

13 Section 4
About The Company

Section 1

PROPERTY
INFORMATION





Property Overview

Broken down into 13 lots the prices range from 17,000 Per acre for the middle 10 lots and 30,000 for the outer three lots fronting Ferry Road and LA Hwy 10.

Location Overview

Located between LA-10 and Ferry Road in New Roads this property provides easy access to New Roads and St Francisville, LA.

LOT SIZE: **28.5 Acres**

Additional Photos



Section 2

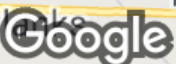
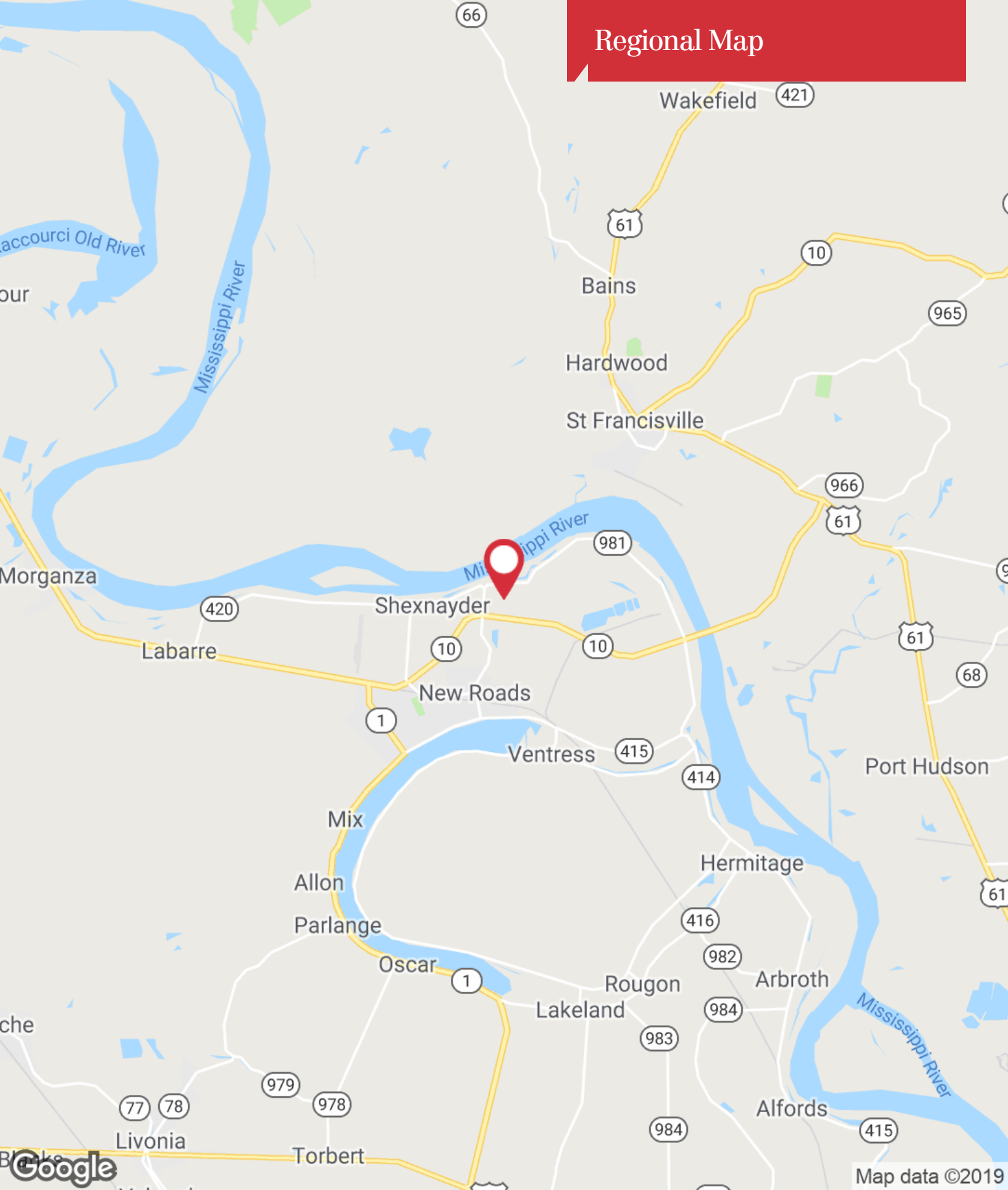
LOCATION
INFORMATION



Location Maps

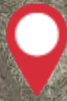
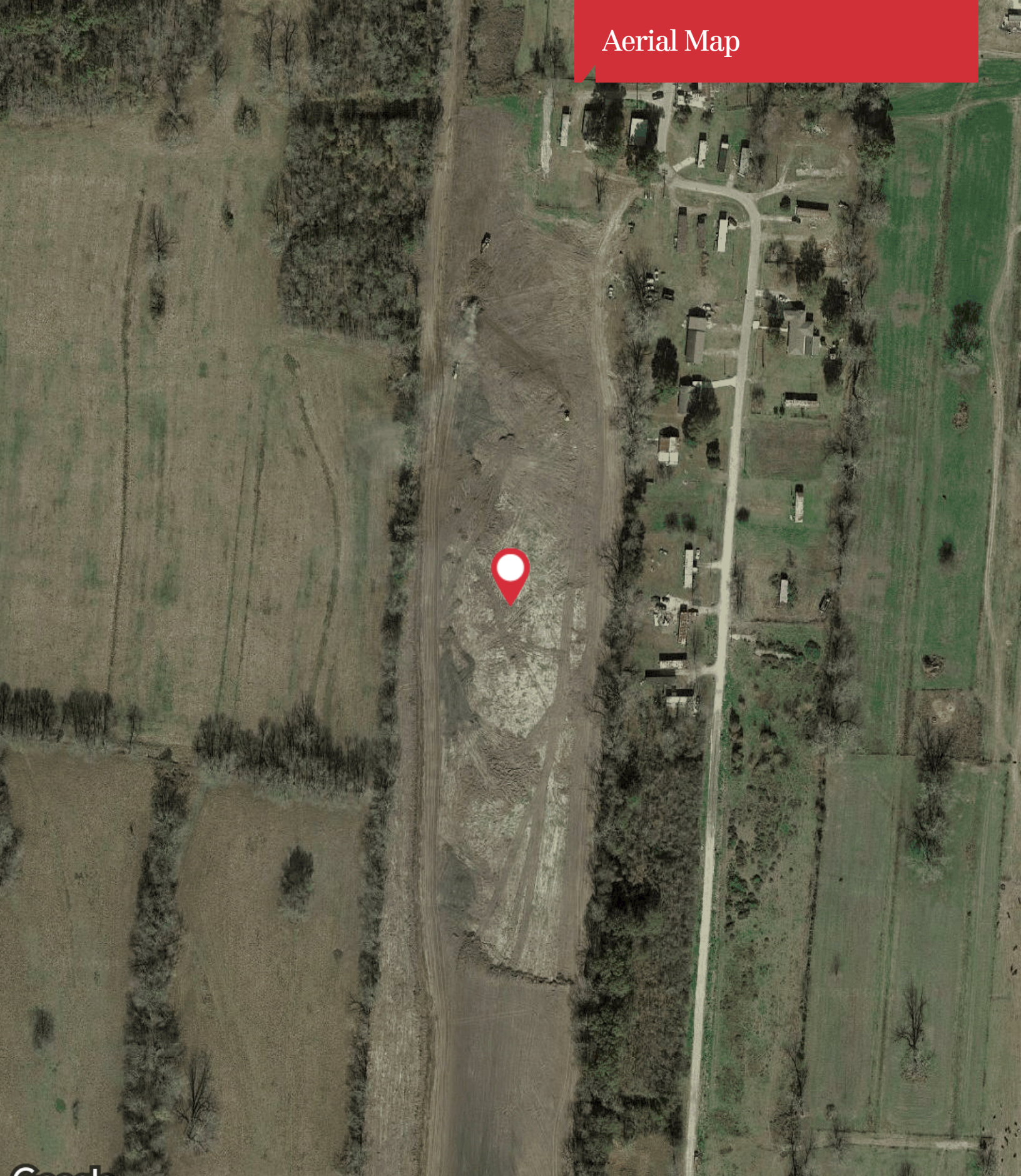


Regional Map



Map data ©2019

Aerial Map



Google

Imagery ©2019 , Maxar Technologies, U.S. Geological Survey, USDA Farm Service Agency

NAILatter&Blum

1700 City Farm Drive
Baton Rouge, LA 70806
225 295 0800 tel
latterblum.com

Section 3

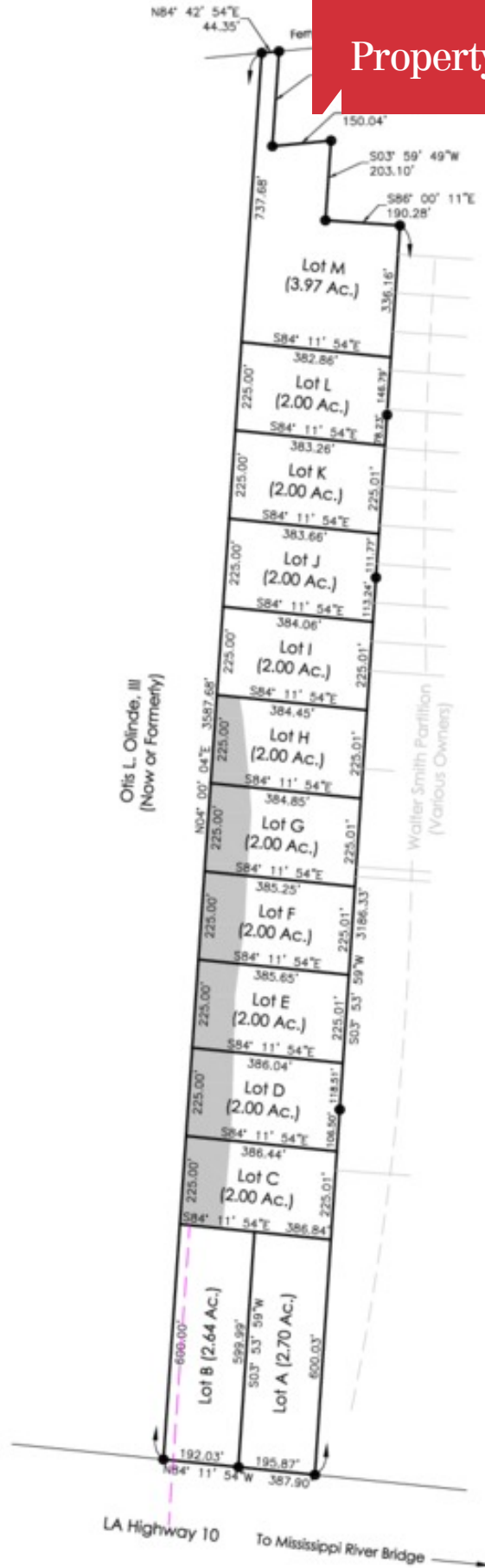
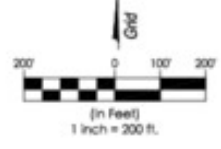
ADDITIONAL
INFORMATION



Property Site Plans



Vicinity Map: 1" = 1000'



LA Highway 10 To Mississippi River Bridge

Section 4

ABOUT THE
COMPANY





Grey Hammett III

Commercial Sales and Leasing

225.295.0800 tel
225.588.4343 cell
grey@latterblum.com

Professional Background

Grey Hammett, III was born and raised in Baton Rouge and graduated from Ole Miss. As a Licensed Real Estate Agent, Grey Looks forward to working with his friends and contacts in and around the Baton Rouge area.

Expertise & Strengths:

- Commercial Sales
- Commercial Leasing
- Lease Negotiations
- Tenant Build Out
- Development Consultation
- Property Asset Management
- Commercial Real Estate Investment
- Property Management



Parker Cavin

Commercial Sales and Leasing

225.295.0800 tel
225.888.4030 cell
pcavin@latterblum.com

Professional Background

Parker was born and raised in Natchez, MS where he graduated from Trinity Episcopal Day School in 2011. During high school, he earned the rank of Eagle Scout and is also a Master Mason at Harmony Lodge in Natchez. After High School Parker moved to Baton Rouge where he attended LSU until he graduated 2016 with a degree in General Business and a minor in Human Resources. He was an active member of Alpha Gamma Rho Fraternity and St. Albans Episcopal Church. After graduation, Parker started working as an intern for Latter and Blum and then became a full-time agent. During his time with Latter and Blum Parker specializes in vacant land, retail, industrial and office space. He is an active member of Business Associates of Baton Rouge and the Lions Club and is currently working towards his CCIM designation.

Education

Louisiana State University
Graduated E.J. Ourso School of Business 2016

Memberships & Affiliations

Lions Club, York Rite Lodge of Master Masons, Business Associates of Baton Rouge, and Claws for a Cause.



Brooks Lawley

Commercial Sales and Leasing

225.295.0800 x85386 tel
713.829.0930 cell
brookslawley@latterblum.com

Professional Background

Brooks Lawley was born and raised in Houston, Texas and is a true southern woman even though she graduated from the University of Southern California. Within six months of moving to Baton Rouge, she joined NAI Latter & Blum commercial and sales division under the Hammett Group and immediately became an active member of the Baton Rouge community with a mission to help develop it to be the most exciting, safe, and profitable place it can be. Through her experiences, she has developed a keen eye for the details and has seen firsthand what it means to go the extra mile. As a true entrepreneur at heart, she knows the value in connecting with each individual is equally as significant as delivering quality services. Brooks stays up to date with market trends and networks with other real estate professionals through various platforms, most notably through her local and national charitable involvement.

Education

Memorial Senior High School, Houston, Texas, 2003-2007
University of Southern California, 2007-2011

Memberships & Affiliations

- Creator and past president of the P.E.A.C.E Foundation
- Member of The Great Americans Shoot
- Member of The Del Mar Turf Club
- Board member of Ducks Unlimited Sponsor Banquet
- Member of NRA
- Member of CCA Baton Rouge and Texas
- Member of Baton Rouge Delta Waterfowl
- Junior League
- Houston Live Stock and Rodeo Member
- Member of Ducks Unlimited Baton Rouge and Houston
- Member of Texas Wildlife Association
- Member of Safari Club International
- Member of The Wild Turkey Federation
- Sitka Gear Women's Whitetail and Waterfowl
- Member Of CAEF: The Capital Area Law Enforcement Foundation