

FOR LEASE

8,079 SF Showroom/Service
Building on Belmont Avenue

3505 W. Belmont Avenue
CHICAGO, IL 60618



Property Streetview

PROPERTY SPECIFICATIONS

Space Available	± 8,079 Sq. Ft.
Land Size	± 17,500 Sq. Ft.
Parking	± 4,400 Sq. Ft. Gated & Paved Lot
Ceiling Heights	12'-22' Clear
Loading	9 Drive-in-Doors
Zoning	C1-1
2017 Taxes	\$3.65 PSF
Lease Rate	\$12 PSF NET (\$8,079/Month)
Comments	<ul style="list-style-type: none">▪ Former auto body + auto sales▪ High visibility, corner site▪ Abundant natural light▪ 22' high clear space, ideal for brewery or show room▪ Parking for 20+ vehicles on 4,400 SF lot▪ Existing lifts▪ Extra wide alley in back▪ Located in Logan Square/Avondale neighborhood▪ Easy to move vehicles, with drive-in-doors off of alley and throughout building

For more information,
please contact:

MARK A. NELSON, SIOR

Principal

312 267-1101

Mark@NelsonHill.com

MICHAEL J. CONWAY

Vice President

312 586-2770

MConway@NelsonHill.com

NelsonHill

1111 S. Western Avenue
Chicago, IL 60612

All information contained herein is
from sources deemed reliable and is
submitted subject to errors, omissions
and to change of price or terms
without notice.



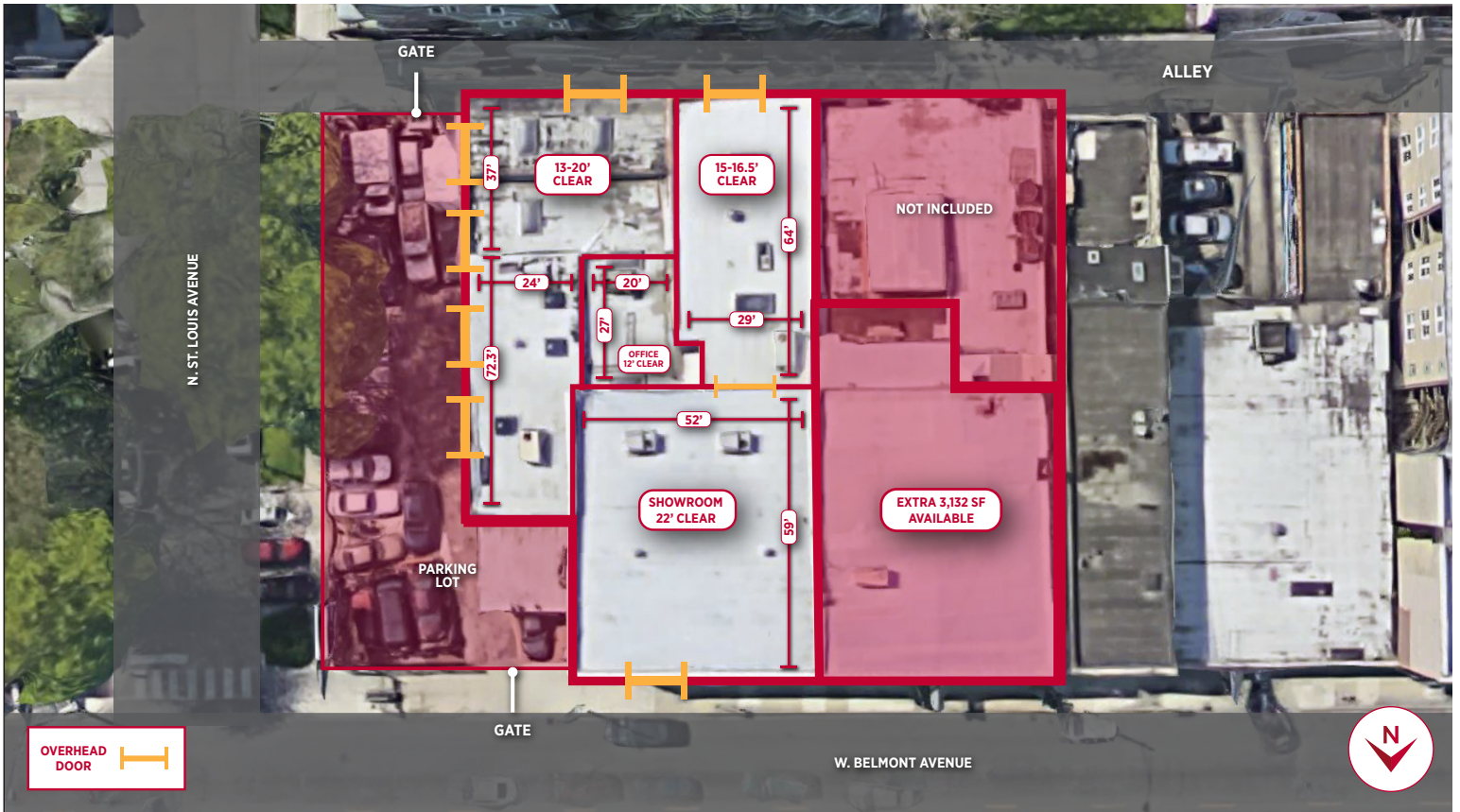
FOR LEASE

8,079 SF Showroom/Service Building on Belmont Avenue

3505 W. Belmont Avenue

CHICAGO, IL 60618

PROPERTY PHOTOS



FOR LEASE

8,079 SF Showroom/Service
Building on Belmont Avenue

3505 W. Belmont Avenue
CHICAGO, IL 60618

PROPERTY IMAGES CONTINUED

