

# Zoned Multi-Family Development Land

290 Multi-Family Units & 80,000 SF Climate Controlled Storage Facility  
SWC Green Hills Road & Tiffany Springs Road / Kansas City, MO



HOME

LAND HIGHLIGHTS

LOCATION AERIAL

SITE/GRADING PLANS

RENDERINGS

For more information, please contact:

**Craig Kelly, SIOR**  
Director  
+1 816 412 0279  
craig.kelly@cushwake.com

**Whitney E. Kerr, Jr., SIOR, CCIM**  
Managing Director  
+1 816 412 0250  
whitney.kerrjr@cushwake.com

4600 Madison Avenue, Suite 800  
Kansas City, MO 64112  
Main +1 816 221 2200  
Fax +1 816 842 2798  
cushmanwakefield.com

## Land Highlights

- 27± acres zoned and ready for development
- Zoned for 290 multi-family units and a two story 80,000 SF climate controlled storage facility
- Located on Green Hills Road north of of 152 Highway in Kansas City, MO
- Established Autumn Ridge neighborhood - Tiffany Ridge Elementary/Park Hill School District
- All utilities available
- Immediate access to KCI, Zona Rosa, Boardwalk Square, St. Luke's North Hospital, Menards, Costco and HyVee
- Immediately west of new Menards
- Sale Price: \$3,500,000

## Demographics

	1 Mile	3 Miles	5 Miles
Population	7,913	40,841	115,690
AVG. HH Income	\$82,462	\$82,297	\$85,595

## Traffic Counts

On 152 Highway	51,761 Cars Per Day
On Green Hills Road	990 Cars Per Day

For more information, please contact:

**Craig Kelly, SIOR**  
Director  
+1 816 412 0279  
craig.kelly@cushwake.com

**Whitney E. Kerr, Jr., SIOR, CCIM**  
Managing Director  
+1 816 412 0250  
whitney.kerrjr@cushwake.com

4600 Madison Avenue, Suite 800  
Kansas City, MO 64112  
Main +1 816 221 2200  
Fax +1 816 842 2798  
cushmanwakefield.com

# SWC Green Hills Road & Tiffany Springs Road Kansas City, MO



HOME

LAND HIGHLIGHTS

LOCATION AERIAL

SITE/GRADING PLANS

RENDERINGS



For more information, please contact:

**Craig Kelly, SIOR**  
Director  
+1 816 412 0279  
craig.kelly@cushwake.com

**Whitney E. Kerr, Jr., SIOR, CCIM**  
Managing Director  
+1 816 412 0250  
whitney.kerrjr@cushwake.com

4600 Madison Avenue, Suite 800  
Kansas City, MO 64112  
Main +1 816 221 2200  
Fax +1 816 842 2798  
cushmanwakefield.com

HOME

LAND HIGHLIGHTS

LOCATION AERIAL

SITE/GRADING PLANS

RENDERINGS



For more information, please contact:

**Craig Kelly, SIOR**  
 Director  
 +1 816 412 0279  
 craig.kelly@cushwake.com

**Whitney E. Kerr, Jr., SIOR, CCIM**  
 Managing Director  
 +1 816 412 0250  
 whitney.kerrjr@cushwake.com

4600 Madison Avenue, Suite 800  
 Kansas City, MO 64112  
 Main +1 816 221 2200  
 Fax +1 816 842 2798  
 cushmanwakefield.com

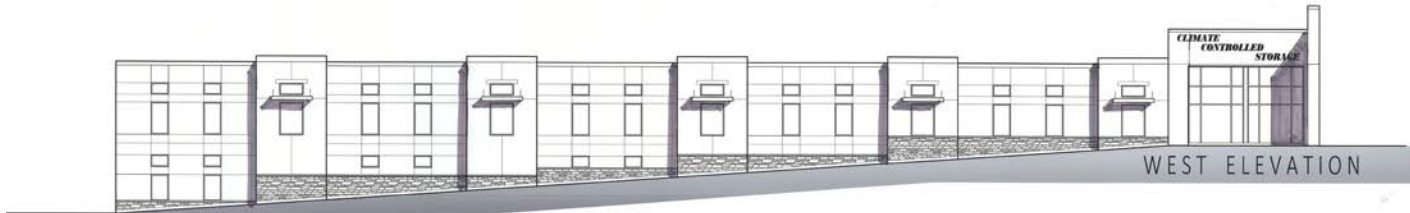
HOME

LAND HIGHLIGHTS

LOCATION AERIAL

SITE/GRADING PLANS

RENDERINGS



## MATERIAL PALETTE



STONE VENEER



EIFS - DRIVIT



EIFS - DRIVIT

View next  
rendering



For more information, please contact:

**Craig Kelly, SIOR**  
Director  
+1 816 412 0279  
craig.kelly@cushwake.com

**Whitney E. Kerr, Jr., SIOR, CCIM**  
Managing Director  
+1 816 412 0250  
whitney.kerrjr@cushwake.com

4600 Madison Avenue, Suite 800  
Kansas City, MO 64112  
Main +1 816 221 2200  
Fax +1 816 842 2798  
cushmanwakefield.com

[HOME](#)[LAND HIGHLIGHTS](#)[LOCATION AERIAL](#)[SITE/GRADING PLANS](#)[RENDERINGS](#)[View next rendering](#)

## MATERIAL PALETTE



STONE VENEER



PAINT - HORZ LAP SIDING



PAINT - ACCENT / SHAKE SIDING



PAINT - ROOF BRACKETS

For more information, please contact:

**Craig Kelly, SIOR**  
Director  
+1 816 412 0279  
craig.kelly@cushwake.com

**Whitney E. Kerr, Jr., SIOR, CCIM**  
Managing Director  
+1 816 412 0250  
whitney.kerrjr@cushwake.com

4600 Madison Avenue, Suite 800  
Kansas City, MO 64112  
Main +1 816 221 2200  
Fax +1 816 842 2798  
cushmanwakefield.com

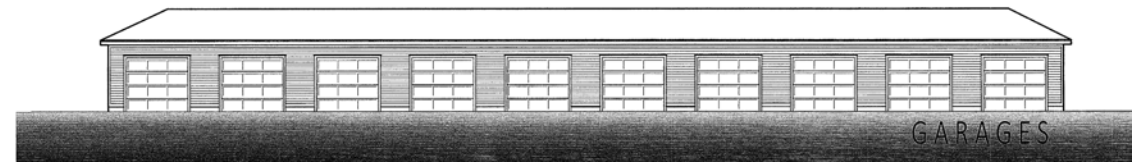
HOME

LAND HIGHLIGHTS

LOCATION AERIAL

SITE/GRADING PLANS

RENDERINGS



For more information, please contact:

**Craig Kelly, SIOR**  
Director  
+1 816 412 0279  
craig.kelly@cushwake.com

**Whitney E. Kerr, Jr., SIOR, CCIM**  
Managing Director  
+1 816 412 0250  
whitney.kerrjr@cushwake.com

4600 Madison Avenue, Suite 800  
Kansas City, MO 64112  
Main +1 816 221 2200  
Fax +1 816 842 2798  
cushmanwakefield.com