

FOR LEASE

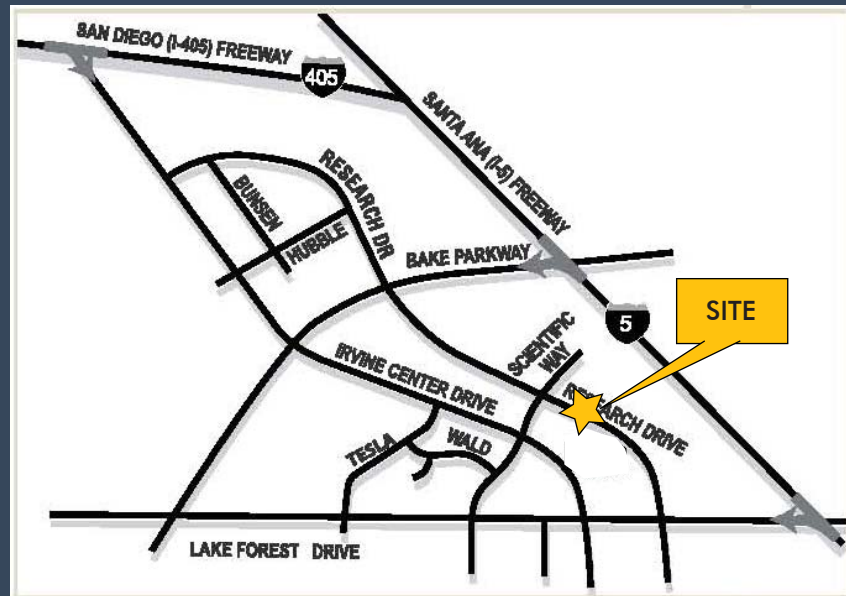
6,548 SQUARE FEET



9700 Research Drive • Irvine Spectrum

Property Features:

- High-Image, Newer Construction, 2-Story Building
- Approx. 3,500 SF of Office
- Fronts Research with Great Signage
- 2 Private Offices, Conference & 2 Large Open Areas
- Restroom Upstairs and Downstairs
- Above Standard Improvements with Granite Bathroom Slate Reception Area
- 22' Warehouse Clearance
- Sprinklers
- 3:1 Parking
- 400 Amps



For further information, contact:

MARK JERUE
Senior Vice President
License ID# 01073399
949.790.3121
mjerue@leeirvine.com

CRAIG FITTERER
Senior Vice President
License ID# 01246929
949.790.3123
cfitterer@leeirvine.com

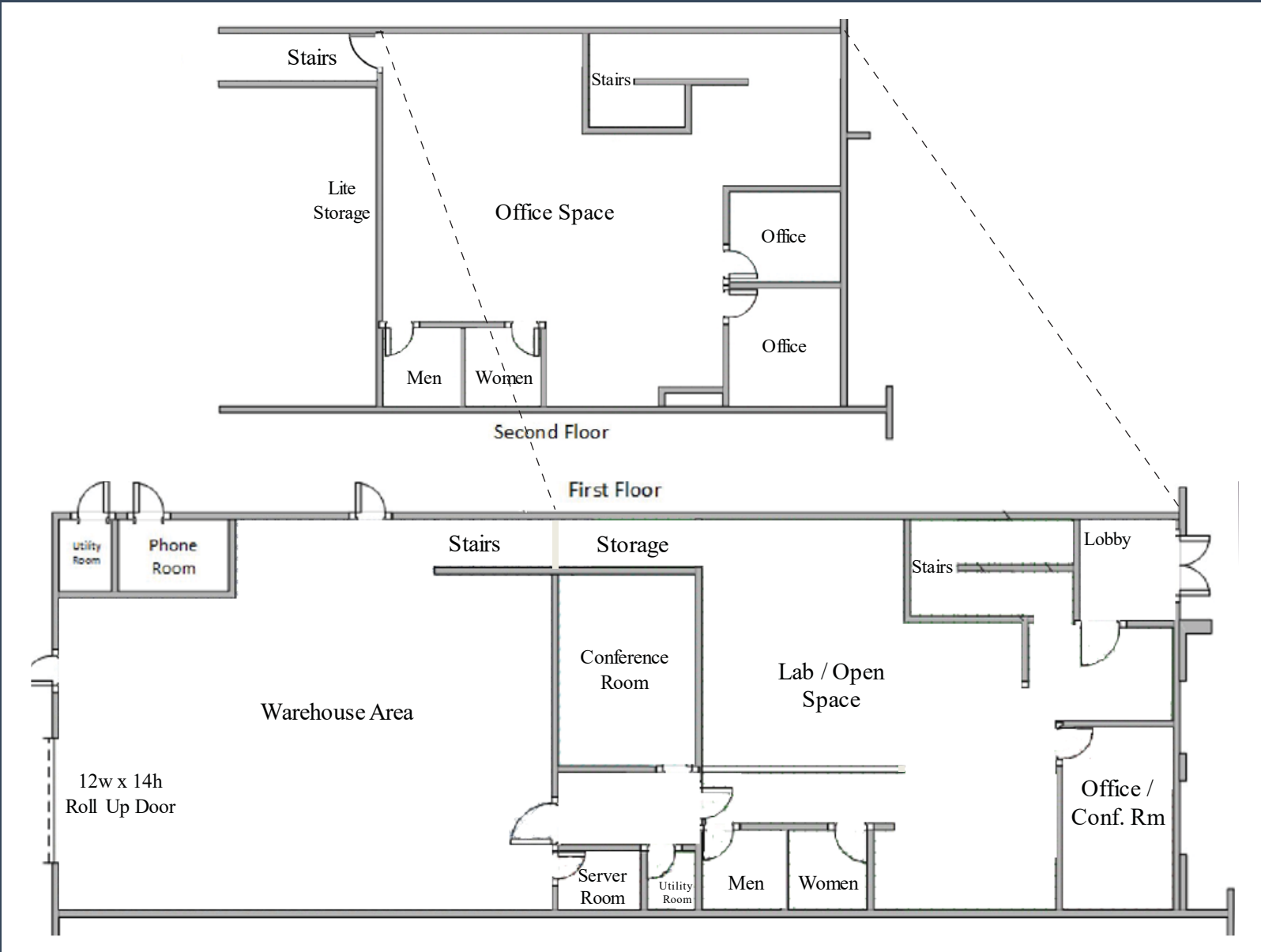


COMMERCIAL REAL ESTATE SERVICES

No warranty or representation is made to the accuracy of the foregoing information. Terms of sale or lease and availability are subject to change or withdrawal without notice.

FOR LEASE

9700 Research Drive, Irvine Spectrum



For further information, contact:



MARK JERUE
Senior Vice President
License ID# 01073399
949.790.3121
mjerue@leeirvine.com

CRAIG FITTERER
Senior Vice President
License ID# 01246929
949.790.3123
cfitterer@leeirvine.com

No warranty or representation is made to the accuracy of the foregoing information. Terms of sale or lease and availability are subject to change or withdrawal without notice.