

BURNSVILLE WEST

12751 County Road 5 Burnsville, MN



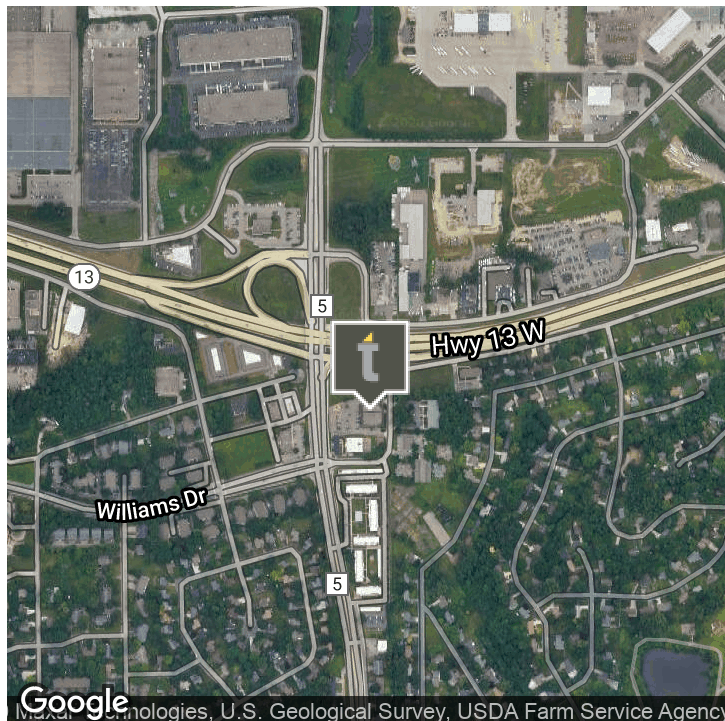
FOR MORE INFORMATION CONTACT:

LYNN ROBSON

C: 612.968.0429

lrobson@telusproperties.com

Executive Summary



LEASE RATE **\$325.00 - 1,050.00/MONTH**

OFFERING SUMMARY

Available SF: 173 - 678 SF

Lease Rate: \$375.00 - 1,050.00
Per Month (Gross)

Building Size: 12,565 SF

Zoning: Commercial

PROPERTY HIGHLIGHTS

- Freshly painted exterior
- New carpet throughout
- Professional office spaces
- Single suite offices available
- Common area conference room
- Common area lunch room
- Located at the intersection of County Road 5 and Hwy 13
- Close proximity to 35W
- Exterior signage available

FOR MORE INFORMATION CONTACT:

LYNN ROBSON
 C: 612.968.0429
 lrobson@telusproperties.com



No warranty or representation, express or implied, is made to the accuracy or completeness of the information contained herein and same is submitted subject to errors, omissions, change of price, rental, or other conditions, withdrawal without notice and to any special listing conditions imposed by the property owner(s). We make no representations to the as to the condition of the property in question.

Additional Photos



LYNN ROBSON
C: 612.968.0429
lrobson@telusproperties.com

No warranty or representation, express or implied, is made to the accuracy or completeness of the information contained herein and same is submitted subject to errors, omissions, change of price, rental, or other conditions, withdrawal without notice and to any special listing conditions imposed by the property owner(s). We make no representations to the as to the condition of the property in question.

telus PROPERTY
SERVICES +
SOLUTIONS

Suite 111 Photos



LYNN ROBSON
C: 612.968.0429
lrobson@telusproperties.com

No warranty or representation, express or implied, is made to the accuracy or completeness of the information contained herein and same is submitted subject to errors, omissions, change of price, rental, or other conditions, withdrawal without notice and to any special listing conditions imposed by the property owner(s). We make no representations to the as to the condition of the property in question.



Suite 161 Photos



LYNN ROBSON
C: 612.968.0429
lrobson@telusproperties.com

No warranty or representation, express or implied, is made to the accuracy or completeness of the information contained herein and same is submitted subject to errors, omissions, change of price, rental, or other conditions, withdrawal without notice and to any special listing conditions imposed by the property owner(s). We make no representations to the as to the condition of the property in question.



Available Spaces



LEASE TYPE GROSS | TOTAL SPACE 173 - 678 SF | LEASE TERM NEGOTIABLE | LEASE RATE \$275.00 - \$995.00 PER MONTH

ADDRESS	TENANT	SIZE (SF)	LEASE TYPE	LEASE RATE	SUITE
12751 County Road 5	Available	214 SF	Gross	\$315 per month	Suite 106
12751 County Road 5	Available	179 SF	Gross	\$275 per month	Suite 109
12751 County Road 5	Available	678 SF	Gross	\$995 per month	Suite 170
12751 County Road 5	Available	173 SF	Gross	\$325 per month	Suite 101
12751 County Road 5	Available	413 SF	Gross	\$600 per month	Suite 161
12751 County Road 5	Available	235 SF	Gross	\$350 per month	Suite 105

LYNN ROBSON

C: 612.968.0429

lrobson@telusproperties.com

No warranty or representation, express or implied, is made to the accuracy or completeness of the information contained herein and same is submitted subject to errors, omissions, change of price, rental, or other conditions, withdrawal without notice and to any special listing conditions imposed by the property owner(s). We make no representations to the as to the condition of the property in question.

telus PROPERTY
SERVICES+
SOLUTIONS

Floor Plan



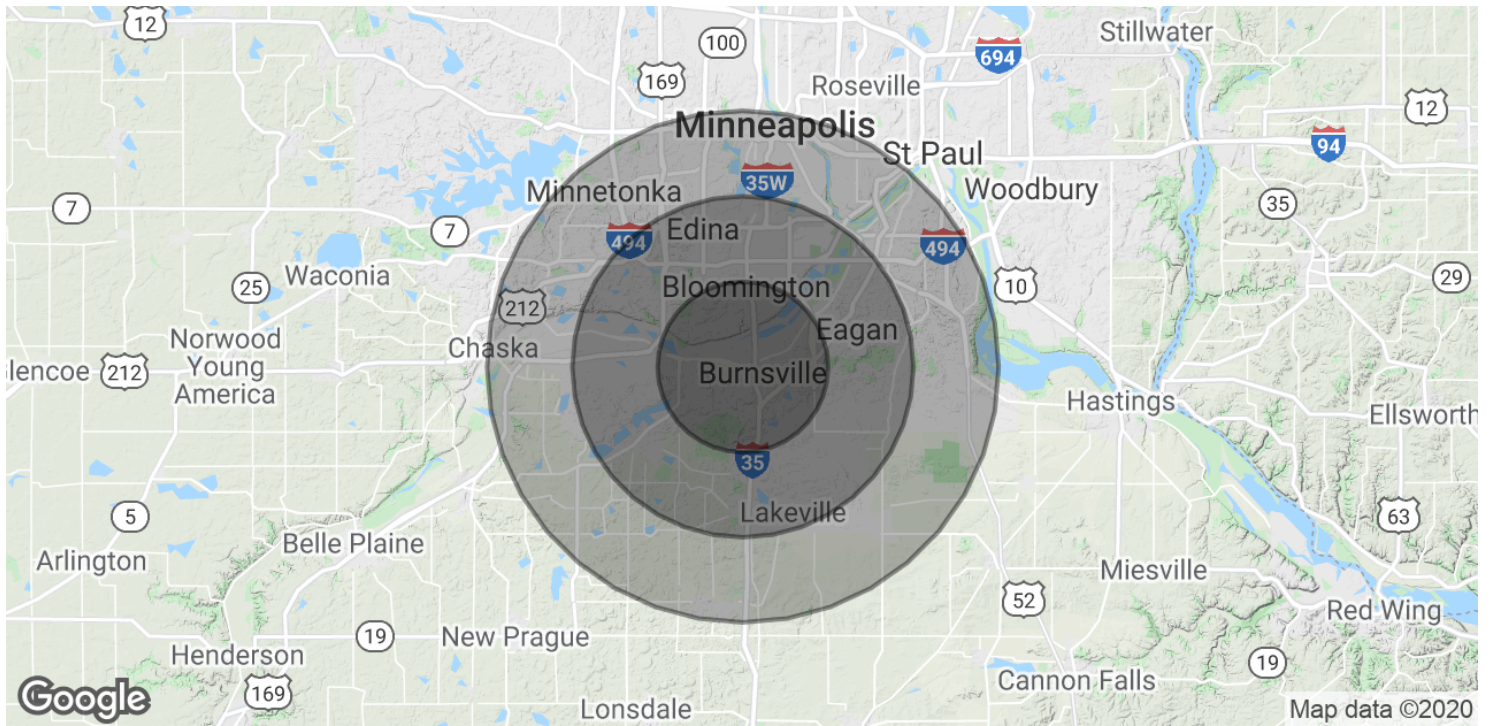
Unit #	RSF
101	173
105	235
106	214
109	179
161	413
170	678

LYNN ROBSON
 C: 612.968.0429
 lrobson@telusproperties.com



No warranty or representation, express or implied, is made to the accuracy or completeness of the information contained herein and same is submitted subject to errors, omissions, change of price, rental, or other conditions, withdrawal without notice and to any special listing conditions imposed by the property owner(s). We make no representations to the as to the condition of the property in question.

Demographics Map & Report



POPULATION	5 MILES	10 MILES	15 MILES
Total Population	171,535	614,691	1,372,161
Median age	38.0	38.0	36.3
Median age (Male)	36.6	36.8	35.5
Median age (Female)	39.3	39.2	37.1
HOUSEHOLDS & INCOME	5 MILES	10 MILES	15 MILES
Total households	69,103	246,779	571,493
# of persons per HH	2.5	2.5	2.4
Average HH income	\$82,092	\$90,808	\$86,471
Average house value	\$272,387	\$314,610	\$319,193

* Demographic data derived from 2010 US Census

LYNN ROBSON
 C: 612.968.0429
 lrobson@telusproperties.com



No warranty or representation, express or implied, is made to the accuracy or completeness of the information contained herein and same is submitted subject to errors, omissions, change of price, rental, or other conditions, withdrawal without notice and to any special listing conditions imposed by the property owner(s). We make no representations to the as to the condition of the property in question.