

SANDY TECHNOLOGY PARK III

Property Information

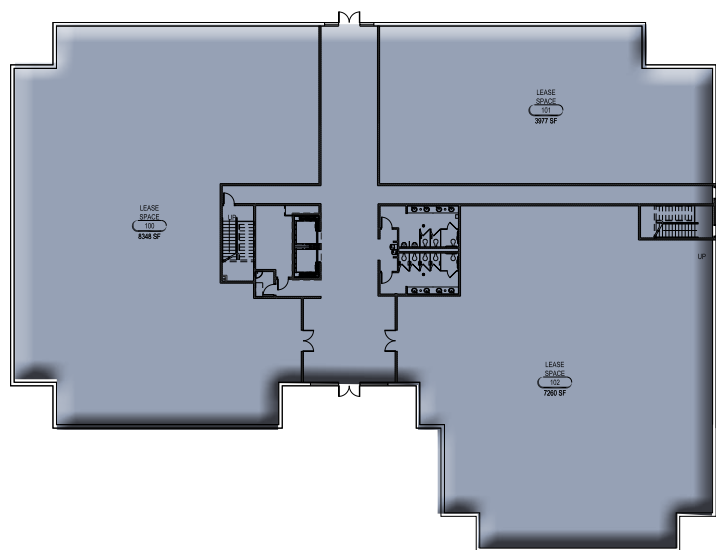
- 40,000 SF Available
- \$21.00 NNN Lease Rate
- 5/1000 Parking
- 9000 South Easy Freeway Access
- Abundant Amenities Nearby
- Apart of 3 Building Sandy Technology Campus

Demographics

POPULATION	1 MILE	3 MILE	5 MILE
2020 EST	13,624	128,085	344,528
2025 EST	14,548	135,994	365,974
HOUSEHOLDS			
2020 EST	4,755	47,075	119,890
2025 EST	5,056	49,957	127,284
INCOME			
2020 AVG	\$66,984	\$91,248	\$107,239
2020 MED	\$60,249	\$73,291	\$83,964

Source: Sites USA 2020

MAIN FLOOR SPACE
19,585 RSF AVAILABLE



2ND FLOOR SPACE
20,354 RSF AVAILABLE

