

FOR LEASE > WAREHOUSE/DISTRIBUTION FACILITY

Clocktower Commerce Center

UNION CITY, CA



¹ All rents Gross and include Taxes, Insurance and CAM

Unit	Sq.Ft.	Features	Rent ¹	Rate PSF ¹
3209 Whipple Road	1,718	One (1) Drive in Door, Two (2) Prive Offices and Reception Area	\$2,150	\$1.25

Site Features

Easy I-880 access, dock-high/grade-level rear loading, attractive landscaping, ample parking, fully sprinklered, extensive exterior glass line, air conditioned offices (standard HVAC fee is required per month).

Warehouse Areas

Sealed floors, skylights, florescent lighting

Joe Yamin
+1 510 433 5812
joe.yamin@colliers.com
CA License No. 01327666

1999 Harrison Street,
Suite 1750
Oakland, CA 94612
www.colliers.com/oakland

The information furnished has been obtained from sources we deem reliable and is submitted subject to errors, omissions and changes. Although Colliers International has no reason to doubt its accuracy, we do not guarantee it. All information should be verified by the recipient prior to lease, purchase, exchange, or execution of legal documents. © 2017 Colliers International

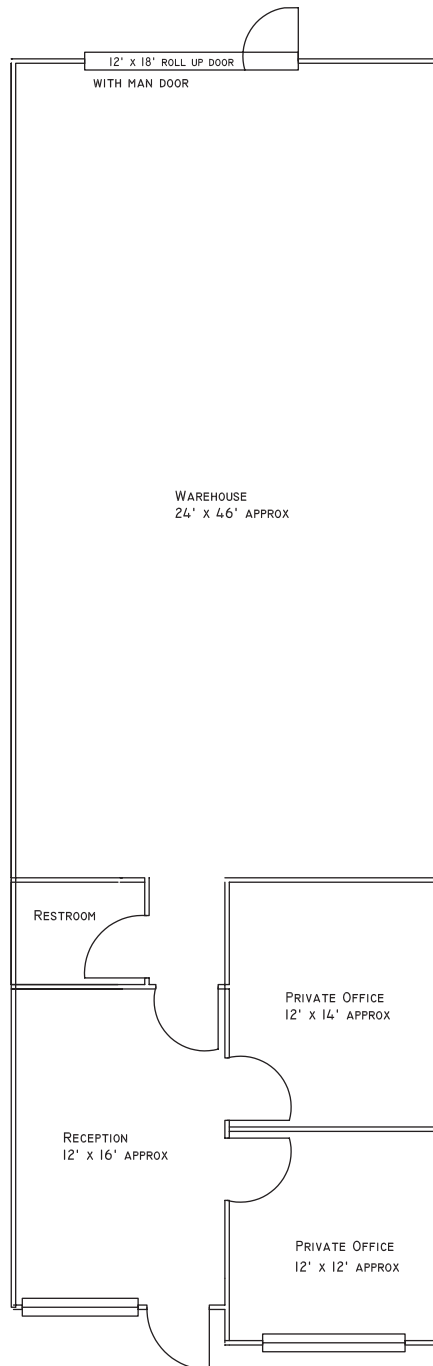
FOR LEASE > WAREHOUSE/DISTRIBUTION FACILITY

Clocktower Commerce Center

UNION CITY, CA



3209 Whipple Road, Union City | ±1,718 Square Feet



Joe Yamin
+1 510 433 5812
joe.yamin@colliers.com
CA License No. 01327666

1999 Harrison Street,
Suite 1750
Oakland, CA 94612
www.colliers.com/oakland

The information furnished has been obtained from sources we deem reliable and is submitted subject to errors, omissions and changes. Although Colliers International has no reason to doubt its accuracy, we do not guarantee it. All information should be verified by the recipient prior to lease, purchase, exchange, or execution of legal documents. © 2017 Colliers International