

**OFFICE SPACE FOR LEASE
UP TO 38,046 SF AVAILABLE**

PROPERTY FEATURES

- Space available on first and second floors
- Four-building, well-landscaped, 330,000 SF Class A Forum Office Park
- Located on Hurstbourne Parkway just north of Shelbyville Road
- Easy access to I-64 and I-264
- Numerous nearby amenities including restaurants, retail, services and hotels



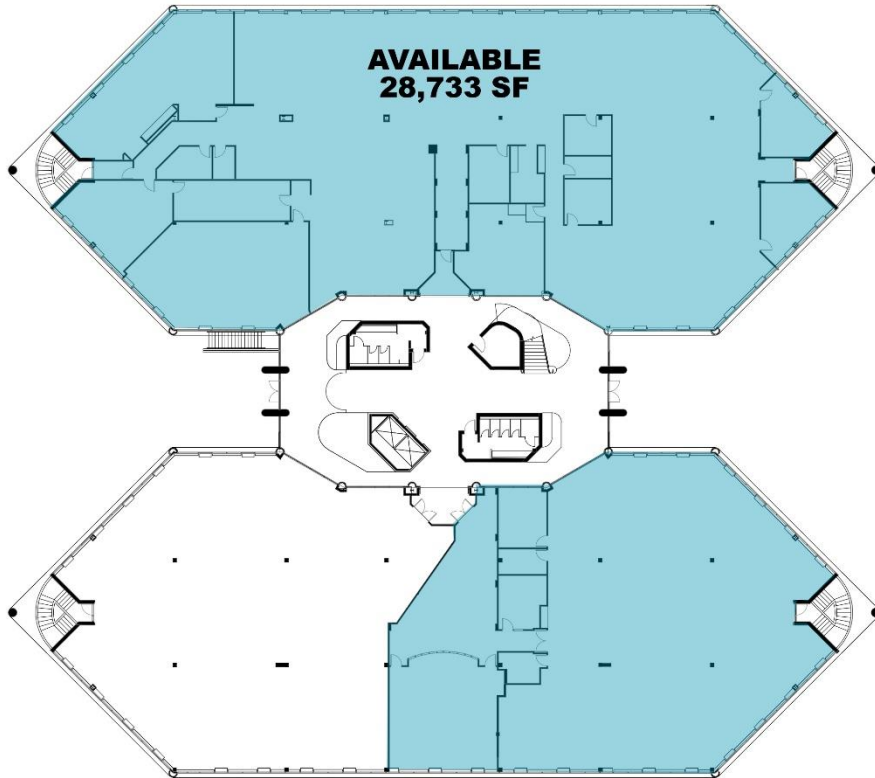
FORUM IV BUILDING

For more information, please contact:

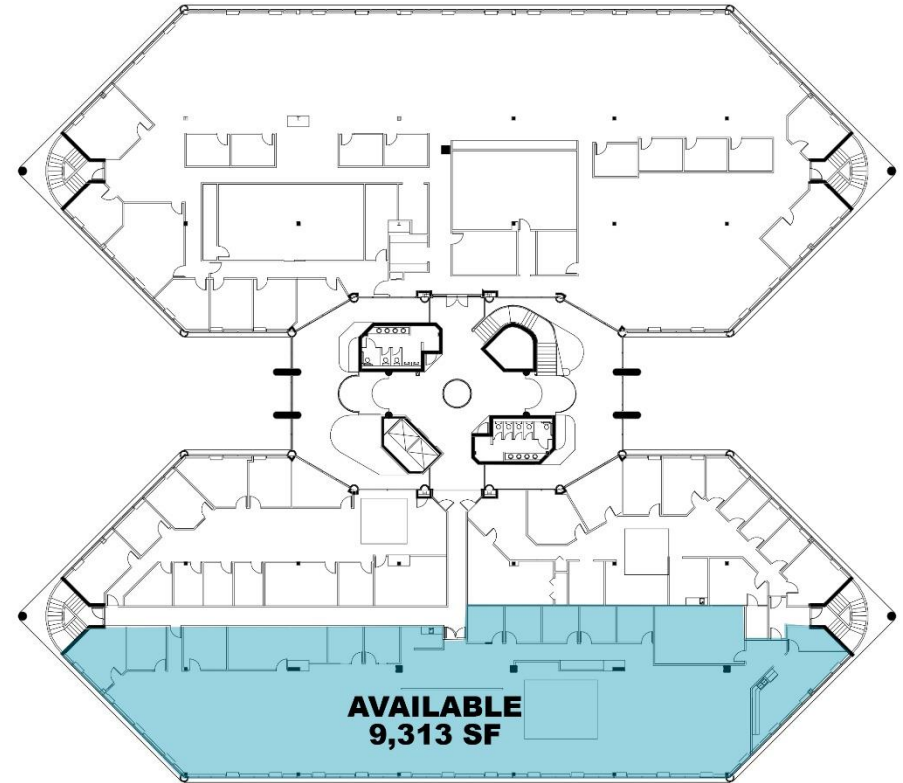
BRENT BOLAND, CCIM
Senior Director
502 384 4494 ext. 134
bboland@commercialkentucky.com

BRENT DOLEN, CCIM
Senior Associate
502 589 5150 ext 262
bdolen@commercialkentucky.com

333 E. Main Street, Suite 510
Louisville, KY 40202
phone: +1 502 589 5150
www.CommercialKentucky.com



First Floor Plan



Second Floor Plan

For more information, please contact:

BRENT BOLAND, CCIM
Senior Director
502 384 4494 ext. 134
bboland@commercialkentucky.com

BRENT DOLEN, CCIM
Senior Associate
502 589 5150 ext 262
bdolen@commercialkentucky.com

333 E. Main Street, Suite 510
Louisville, KY 40202
phone: +1 502 589 5150
www.CommercialKentucky.com



For more information, please contact:

BRENT BOLAND, CCIM
Senior Director
502 384 4494 ext. 134
bboland@commercialkentucky.com

BRENT DOLEN, CCIM
Senior Associate
502 589 5150 ext 262
bdolen@commercialkentucky.com

333 E. Main Street, Suite 510
Louisville, KY 40202
phone: +1 502 589 5150
www.CommercialKentucky.com