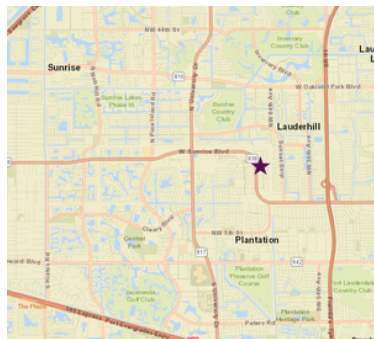
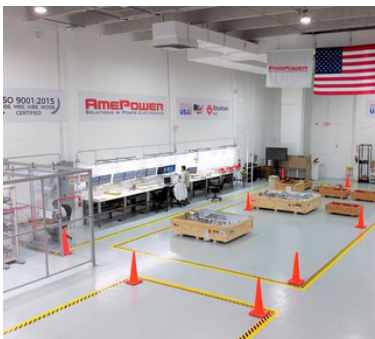


AVAILABLE FOR LEASE



10430 NW 29th Terrace, Doral, FL 33172

TOTAL SF : ~ 11,000

WAREHOUSE SF : ~ 9,500

OFFICE SF : ~ 1,500

Lease Rate:

\$15 PSF

Plus FL Sales Taxes

Property Features:

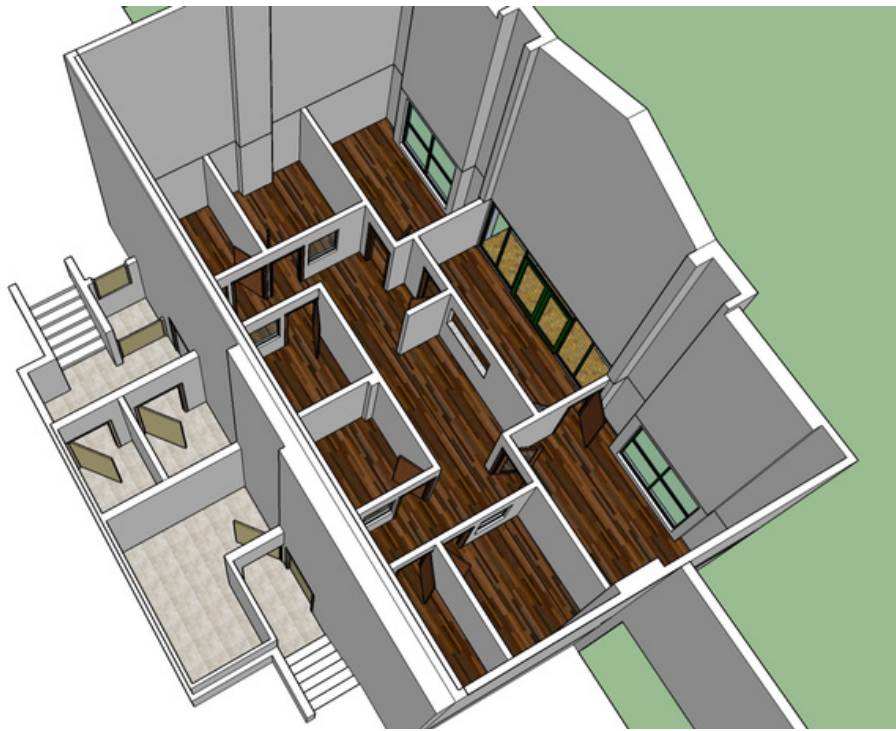
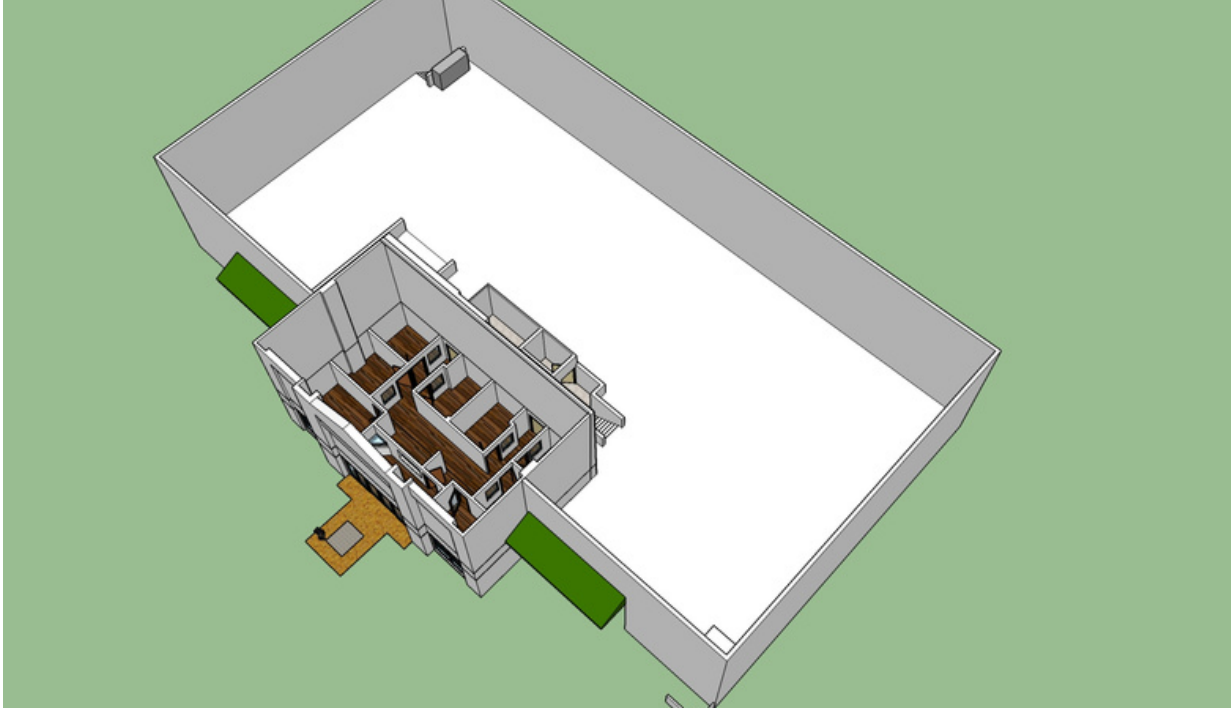
- Fully Air Conditioned Facility
- 6 Offices /3 restrooms
- 1 Conference room
- Kitchen
- 3 Docks and 1 ramp
- 3-phase 280v
- 600 AMPS at the main disconnect
- Automated Shutters
- Unit has been completely Updated with LED Lighting ** (see specs [HERE](#))



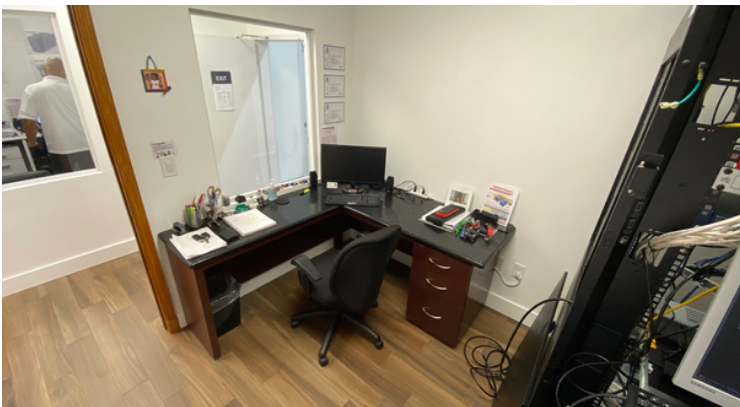
Reshma Parvani
Broker
305-342-9576
rparvani@parvanigroup.com

Vishal Parvani
Associate
786-205-5579
vparvani@parvanigroup.com

PHOTOS



PHOTOS



PHOTOS

