

# PRIME RETAIL CORNER AVAILABLE FOR LEASE

WITHIN CLOSE VICINITY TO MIRACLE MILE & WEST HOLLYWOOD



567 S FAIRFAX AVE  
LOS ANGELES, CA 90036



COMMERCIAL  
ASSET GROUP

## SPACES

±3,500 SQFT GROUND FLOOR +  
±2,000 SQFT MEZZANINE

## RENTAL RATE

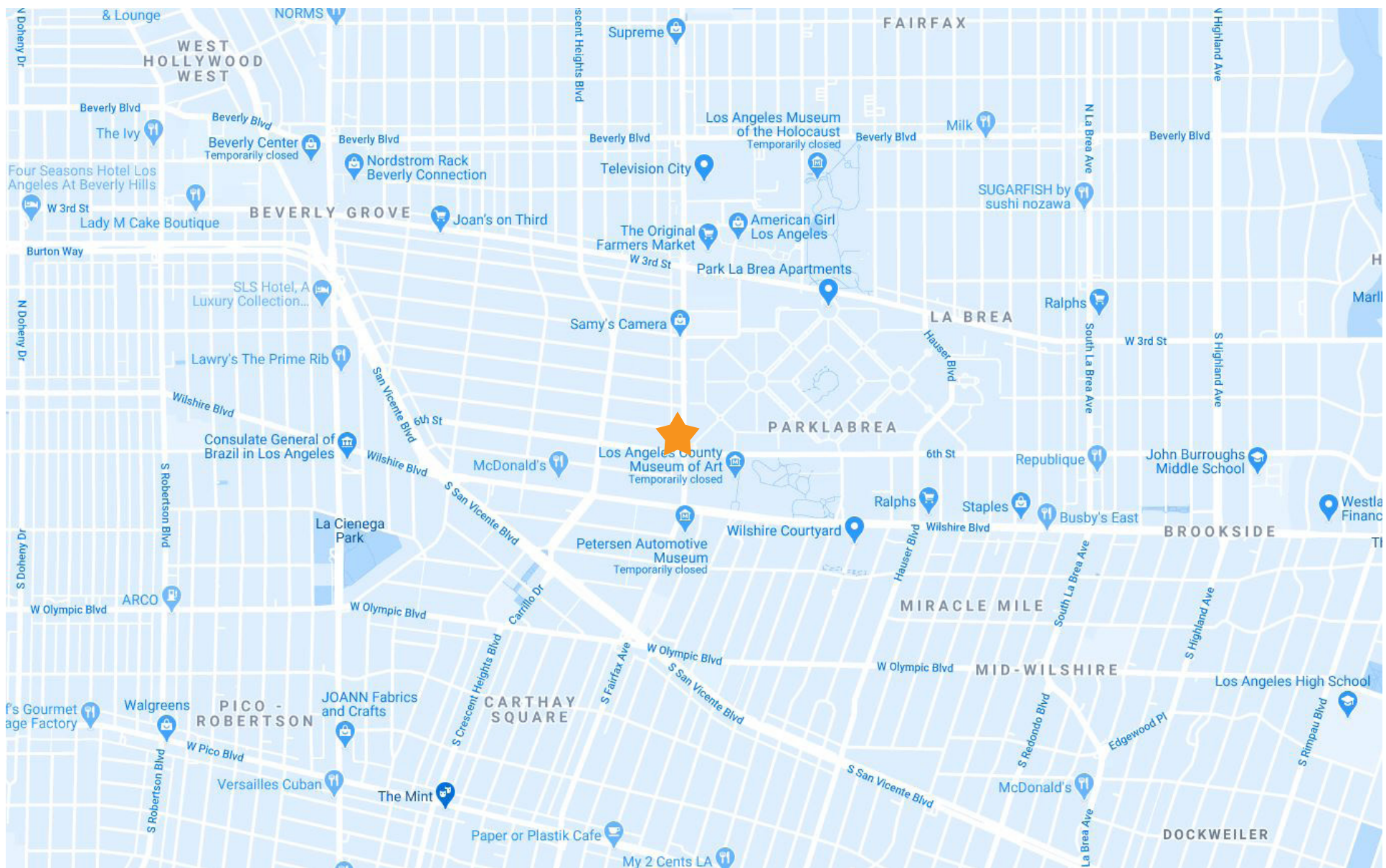
\$15,000/MO, NNN  
(2020 EST. \$2,000/MO)

## AVAILABLE

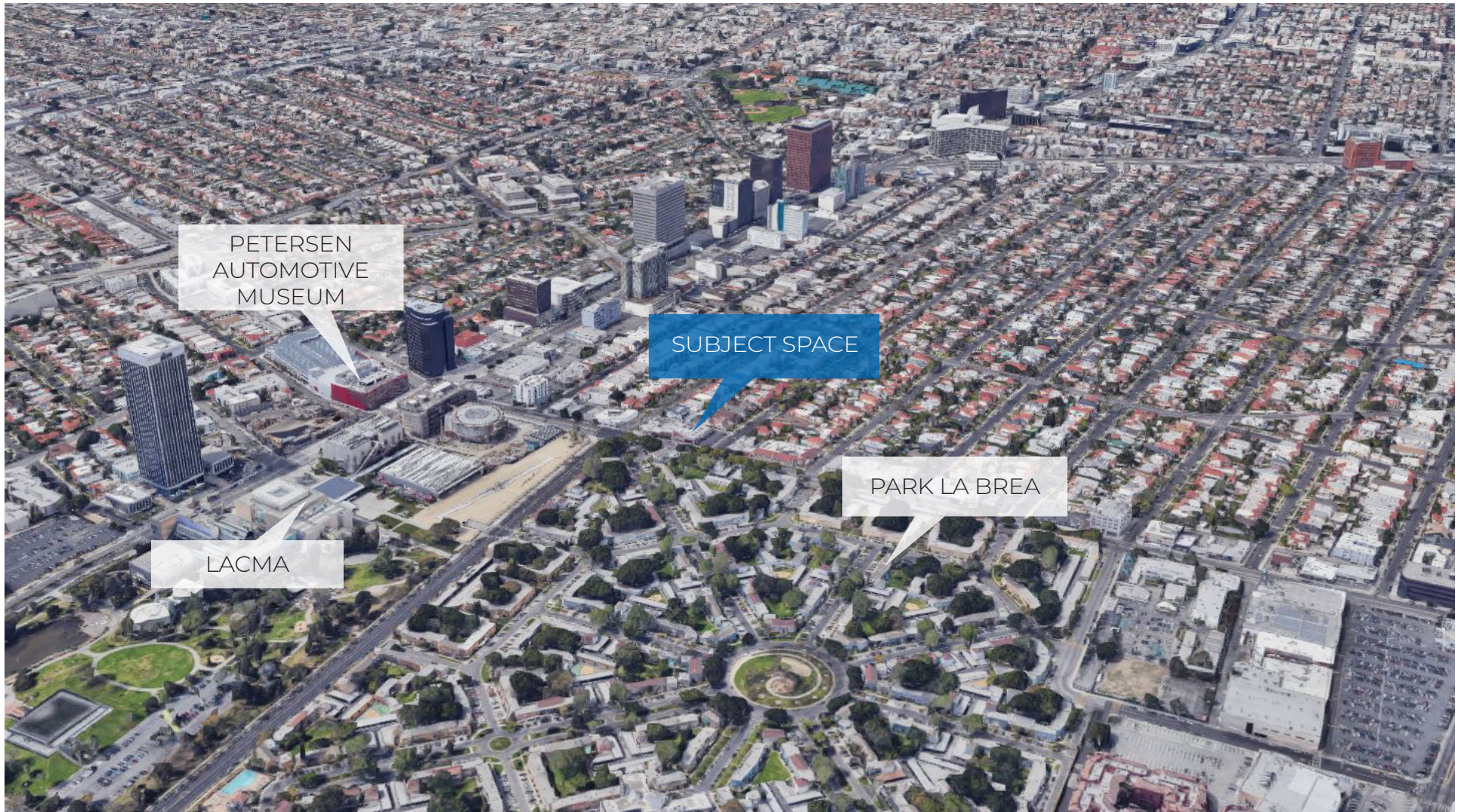
IMMEDIATELY

These materials are based on information and content provided by others, which we believe are accurate. No guarantee, warranty or representation is made by Commercial Asset Group, Inc. or its personnel. All interested parties must independently verify accuracy and completeness. As well, any projections, assumptions, opinion, or estimates are used for example only and do not represent the current or future performance of the identified property. Your tax, financial, legal and toxic substance advisors should conduct a careful investigation of the property and its suitability for your needs, including land use limitations. The property is subject to prior lease, sale, change in price, or withdrawal from the market without notice.

- UNIQUE SINGLE TENANT CORNER PROPERTY WITH AMAZING PARKING LOT
- UNBELIEVABLE PRESENCE/SIGNAGE - CORNER LOCATION, DEDICATED POLE SIGN, ADDITIONAL SIGNAGE ON FRONT AND SIDE OF BUILDING
- CURRENTLY A PET GROOMER - BUILT IN CLIENTELE FOR TENANTS IN THE PET SPACE
- LOCATED IN A HIGH DEMOGRAPHIC AREA, SURROUNDED BY MULTI MILLION DOLLAR HOMES, THE LARGEST APARTMENT COMMUNITY WEST OF THE MISSISSIPPI (PARK LA BREA), MULTIPLE HIGH RISE OFFICE BUILDINGS AND LACMA



MAP



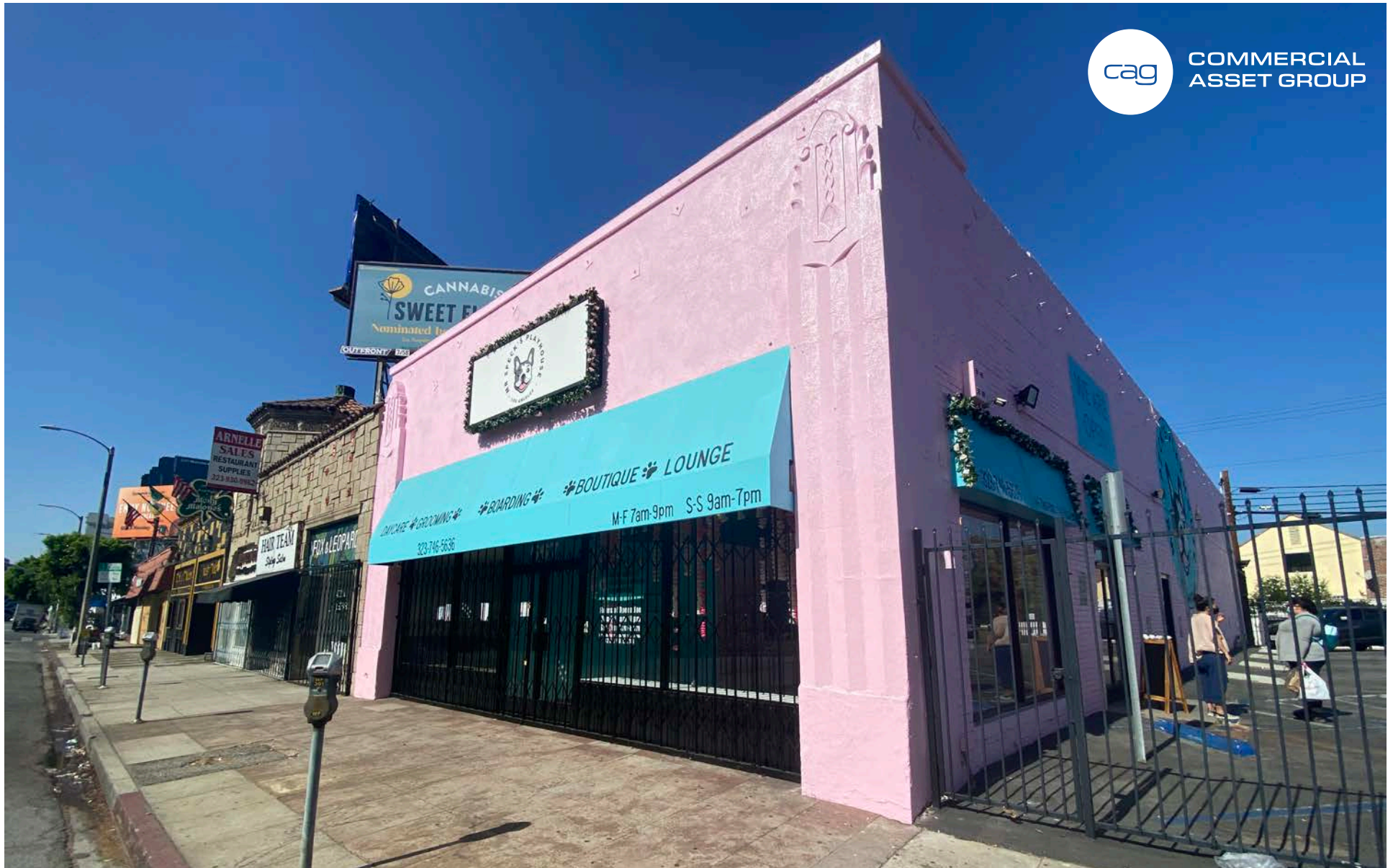
AERIAL



SPACE PHOTOS



COMMERCIAL  
ASSET GROUP



**DAVID ICKOVICS**  
PRINCIPAL  
P 310.272.7380  
E [DJI@CAG-RE.COM](mailto:DJI@CAG-RE.COM)  
LIC. 01315424

**DAVID ASCHKENASY**  
EXECUTIVE VICE PRESIDENT  
P 310.272.7381  
E [DAVIDA@CAG-RE.COM](mailto:DAVIDA@CAG-RE.COM)  
LIC. 01714442

**JEREMY WINTNER**  
DIRECTOR  
P 310.272.7390  
E [JEREMY@CAG-RE.COM](mailto:JEREMY@CAG-RE.COM)  
LIC. 02062054

**COMMERCIAL ASSET GROUP**  
1801 CENTURY PARK EAST, STE 1550  
LOS ANGELES, CA 90067  
P 310.275.8222 F 818.385.1470  
[WWW.CAG-RE.COM](http://WWW.CAG-RE.COM) LIC. 01876070