



# REDMOND WOODS

**BUILDING C**  
AVAILABLE FOR LEASE



5020 148th Avenue NE | Redmond, WA 98052

**CBRE**



# REDMOND WOODS

## PROPERTY FEATURES

- » Redmond Woods is a 7.68-acre, 3-building Class A office complex
- » Closest office project to Microsoft headquarters
- » Immediate access to SR-520
- » Adjacent to Pro Club, a premier athletic facility
- » Walking distance to the Redmond Technology Light Rail Station opening in 2023
- » Parking: 3.47 / 1,000 SF



## UPCOMING PROJECT IMPROVEMENTS



Full Lobby Remodel



Improved Outdoor Areas

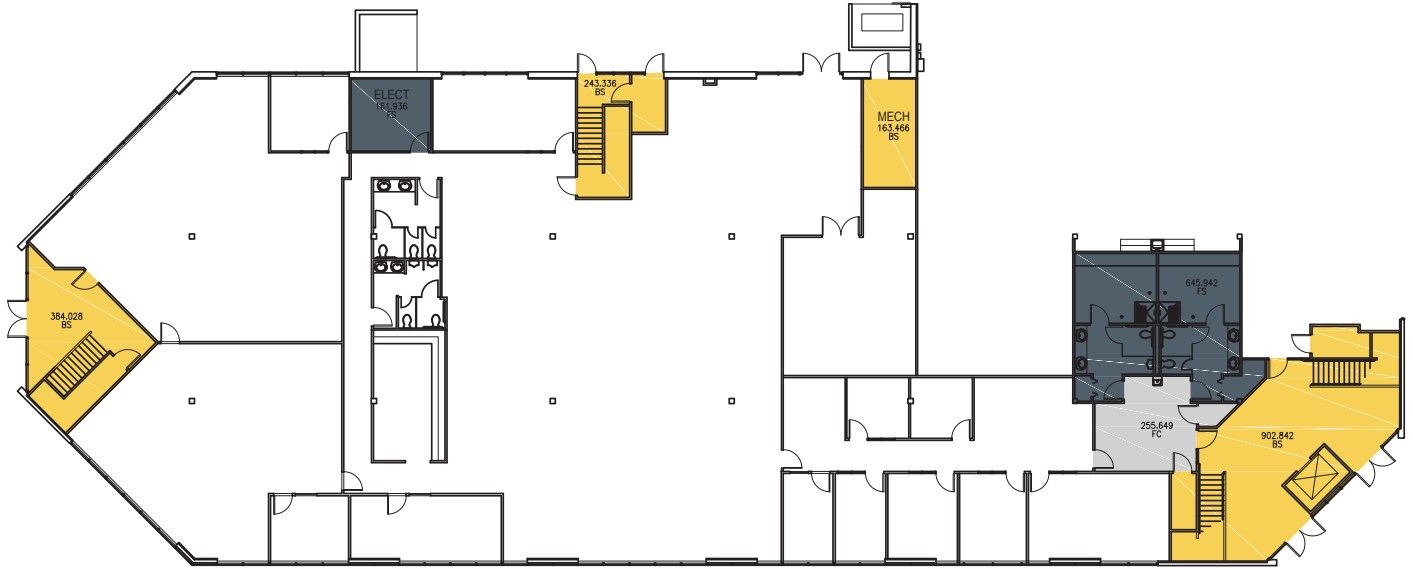


Updated Project Wayfinding

# AVAILABLE SPACE

» Suite 100: 11,716 RSF

» Available May 1, 2022



## LEGEND

-  BUILDING SERVICE
-  FLOOR SERVICE / AMENITY
-  FLOOR CIRCULATION



## ON-SITE AMENITIES



Bike Storage



Showers & Lockers



Outdoor picnic areas



Lit walking trail connects Redmond Woods to the main Microsoft HQ



Food Trucks on-site several days a week



Overlake RapidRide stop located on site



# REDMOND WOODS

**BUILDING C**  
AVAILABLE FOR LEASE



**8**  
**MINUTES**

TO DOWNTOWN  
REDMOND FROM  
THE REDMOND  
TECHNOLOGY LIGHT  
RAIL STATION

**10**  
**MINUTES**

TO DOWNTOWN  
BELLEVUE FROM  
THE REDMOND  
TECHNOLOGY LIGHT  
RAIL STATION

- RapidRide Stop
- Light Rail Line
- 520 Bike Trail

FOR MORE INFORMATION, CONTACT

## SCOTT DAVIS

Senior Vice President  
+1 425 462 6912  
scott.davis@cbre.com

## CORTNEY SCHIRMAN

Client Services Specialist  
+1 425 462 6975  
cortney.schirman@cbre.com

## CBRE, INC.

929 108th Ave NE  
Suite 700  
Bellevue, WA 98004

