

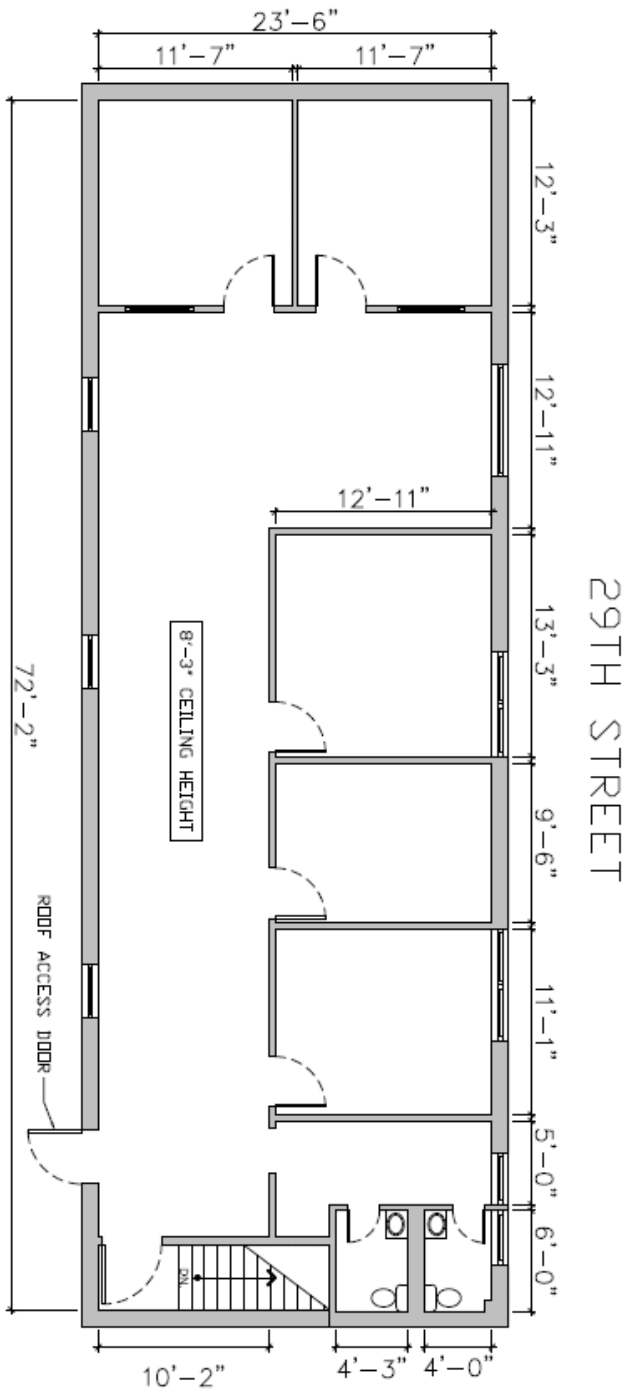
# Werwaiss & Co., Inc.



## FOR LEASE 1700 SF SECOND FLOOR OFFICE

<b><u>ADDRESS:</u></b>	<b>39-15 29<sup>TH</sup> Street Long Island City, New York</b>
<b><u>DESCRIPTION:</u></b>	1,700 SF Second Floor Office
<b><u>LOCATION:</u></b>	3 Blocks to Queensboro Plaza 2 Blocks to Newly Renovated 39 <sup>th</sup> Avenue Subway Stop (N or Q Lines)
<b><u>FEATURES:</u></b>	Second Floor Air Conditioned Offices 2 Bathrooms
<b><u>ZONING:</u></b>	M1-2/R5D
<b><u>POSSESSION:</u></b>	May 2020
<b><u>LEASE TERM:</u></b>	5 years (consideration of longer term with demo clause)
<b><u>BASE RENT:</u></b>	\$42,600 per year; \$3,550/month.
<b><u>CONTACT:</u></b>	<b>WERWAISS &amp; CO., INC.</b> <b>22-15 43<sup>rd</sup> Avenue - Suite 300</b> <b>Long Island City, NY 11101</b> <b>(212) 983-0044</b> <b><a href="mailto:gwerwaiss@werwaissandco.com">gwerwaiss@werwaissandco.com</a></b> <b><a href="http://www.werwaissandco.com">www.werwaissandco.com</a></b>

All information furnished regarding property for sale, rental or financing is from sourced deemed reliable. No representation is made as to the accuracy thereof and it is submitted subject to errors, omissions, change of price, rental or other conditions, prior sale, lease or financing, or withdrawal without notice. BROKERS PROTECTED BY AGREEMENT ON FILE. 2/5/19



# FLOOR PLAN

39-15 29TH STREET  
 LONG ISLAND CITY, NY 11101  
 PLANS AS OF MARCH 2015

  
**Werwaiss & Co., Inc.**  
OWNING, DEVELOPING AND MANAGING COMMERCIAL REAL ESTATE FOR FOUR GENERATIONS