

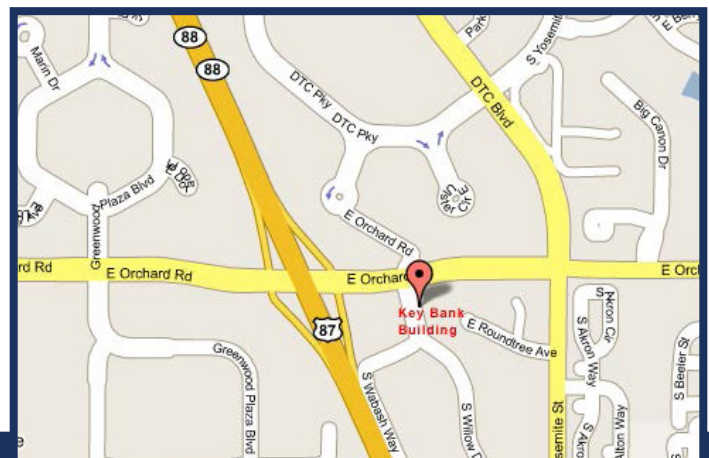
# 5950 South Willow Drive

Greenwood Village, CO 80111



## PROPERTY HIGHLIGHTS

- EASY TO FIND, PROMINENT DTC LOCATION ONE BLOCK EAST OF I-25 ON ORCHARD ACROSS FROM DEL FRISCO'S.
- GREAT MOUNTAIN VIEWS AVAILABLE.
- COMMON CONFERENCE ROOM.
- NEAR THE ARAPAHOE & ORCHARD LIGHT RAIL STATIONS.
- 4.25/1,000 SF PARKING RATIO.
- AWARD WINNING LOCAL OWNERSHIP — KOELBEL AND COMPANY WITH OVER 50 YEARS SUCCESS IN DENVER REAL ESTATE.



**For leasing information please contact:**

Johnny Neff | 720.743.6399  
jneff@premisescommercial.com

Matt Smith | 303.996.8460  
msmith@premisescommercial.com

**PREMISES**  
PREMISES COMMERCIAL REAL ESTATE, LLC  
WWW.PREMISESCOMMERCIAL.COM

# 5950 South Willow Drive

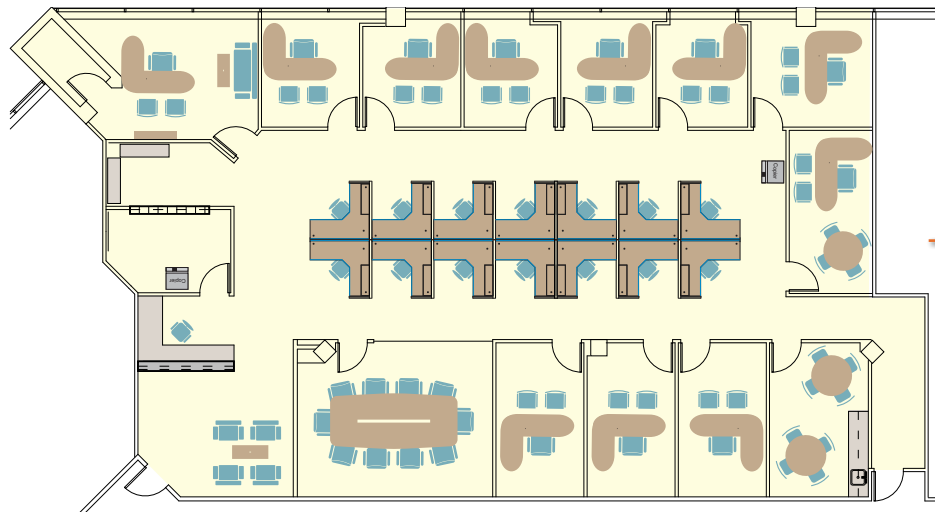
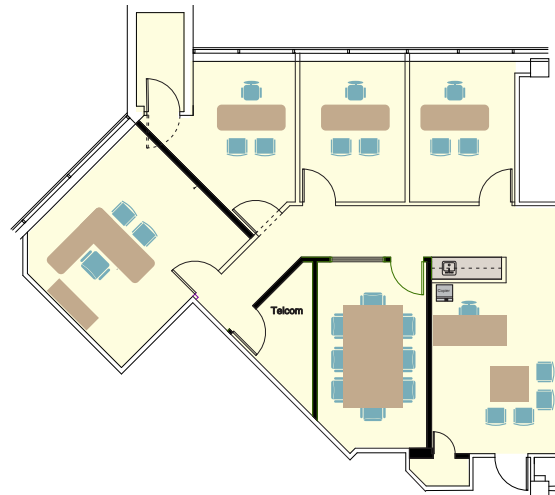
Greenwood Village, CO 80111

## AVAILABLE SUITES

Suite 224

1,649 sf

Second Floor



Suite 306

4,592 sf

Third Floor

[WWW.PREMISESCOMMERCIAL.COM](http://WWW.PREMISESCOMMERCIAL.COM)

The information contained herein, while not guaranteed, has been secured from sources we believe to be reliable. Different brokerage relationships are available which include Seller/Landlord Agency, Buyer/Tenant Agency and Transaction Broker. Premises Commercial Real Estate, LLC is acting in this capacity as Landlord's/Sublessor's Agent, unless otherwise agreed, and owes its fiduciary allegiance to Landlord/Sublessor as defined by Colorado Real Estate Commission.