

2412 S. Michigan Avenue

MOTOR ROW - CHICAGO, IL



FOR MORE INFORMATION

Ari Topper, CFA
Tyler Dechter

ari@baumrealty.com
tyler@baumrealty.com

312.275.3113
312.275.3132



2412 S. MICHIGAN AVENUE - MOTOR ROW - CHICAGO, IL



2412 S. Michigan Avenue

MOTOR ROW – CHICAGO, IL

AVAILABLE SPACE

10,271 SF AVAILABLE

1st Floor: 5,290 SF

2nd Floor: 4,981 SF

AVAILABLE IMMEDIATELY

Asking \$20/NNN (Approx. \$5 PSF total Taxes and Opex)

PROPERTY DETAILS

Recently fully rehabbed Historic Motor Row building featuring exposed brick, timber and concrete

Beautiful office space in move in condition

Kitchen / breakroom and high-end bathrooms available on each floor

Separate elevator entrance serving 2nd floor

Abundant off-street parking available

TRANSPORTATION

3 blocks to CTA Green Line Cermak-McCormick 'L' Station

5 blocks to the CTA Red & Orange Line McCormick Place 'L' Station

Convenient access to I-55 and Lake Shore Drive

FOR MORE INFORMATION

Ari Topper, CFA

ari@baumrealty.com

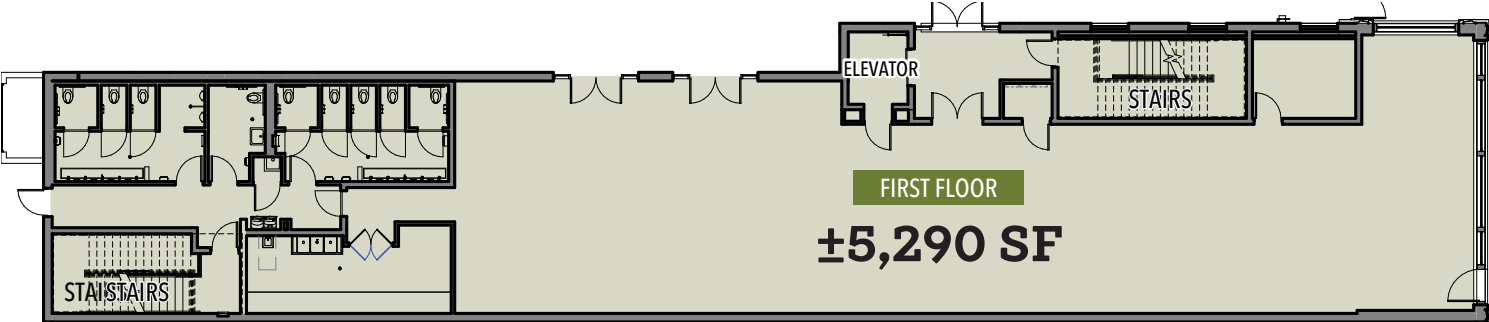
312.275.3113

Tyler Dechter

tyler@baumrealty.com

312.275.3132





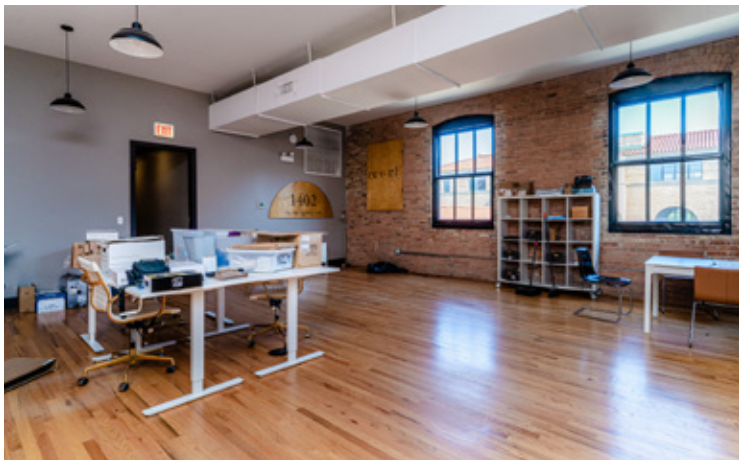
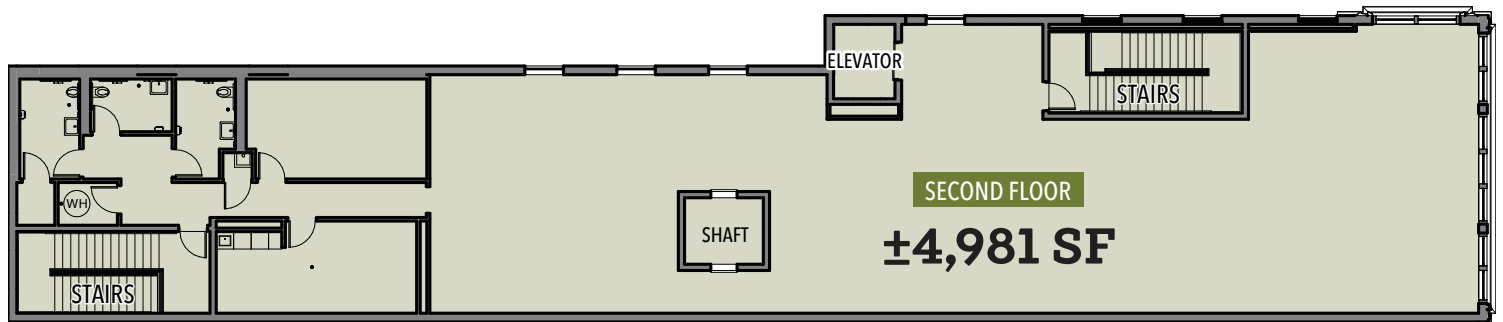
FOR MORE INFORMATION

Ari Topper, CFA
Tyler Dechter

ari@baumrealty.com
tyler@baumrealty.com

312.275.3113
312.275.3132





FOR MORE INFORMATION

Ari Topper, CFA
Tyler Dechter

ari@baumrealty.com
tyler@baumrealty.com

312.275.3113
312.275.3132



2412 S. Michigan Avenue



FOR MORE INFORMATION

Ari Topper, CFA
Tyler Dechter

ari@baumrealty.com
tyler@baumrealty.com

312.275.3113
312.275.3132



Area Highlights



MCCORMICK PLACE CONVENTION CENTER



MOODY TONGUE BREWING



REGGIES CHICAGO VENUE & RESTAURANT



WINTRUST ARENA SPORTS & CONCERT VENUE



CHINATOWN



LIPS CHICAGO

FOR MORE INFORMATION

Ari Topper, CFA
Tyler Dechter

ari@baumrealty.com
tyler@baumrealty.com

312.275.3113
312.275.3132



2412 S. Michigan Avenue

MOTOR ROW – CHICAGO, IL



FOR MORE INFORMATION

Ari Topper, CFA

ari@baumrealty.com

312.275.3113

Tyler Dechter

tyler@baumrealty.com

312.275.3132

