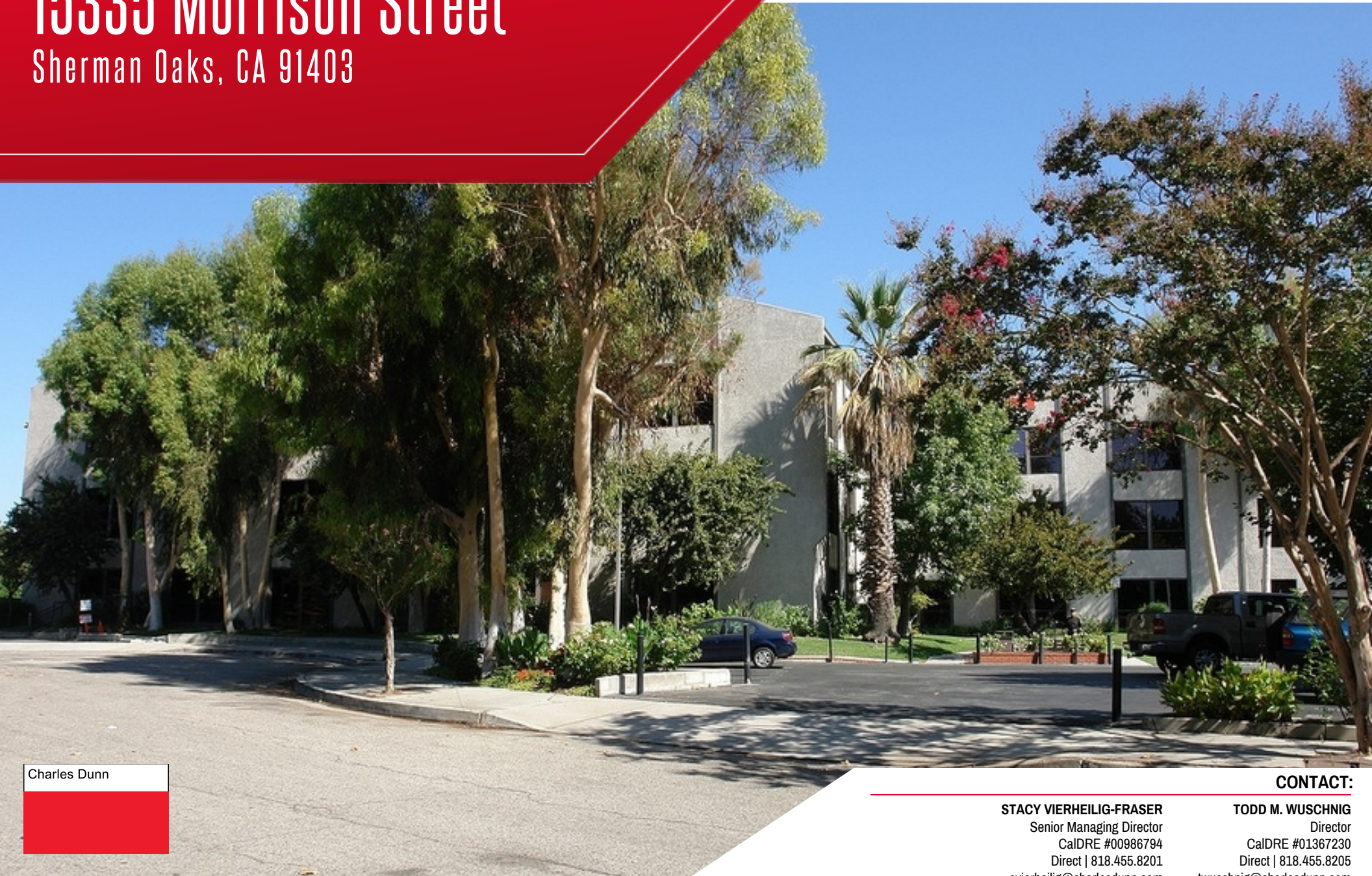


# 15335 Morrison Street

Sherman Oaks, CA 91403

OFFICE SPACE FOR LEASE



Charles Dunn

**CONTACT:**

**STACY VIERHEILIG-FRASER**  
Senior Managing Director  
CalDRE #00986794  
Direct | 818.455.8201  
svierheilig@charlesdunn.com

**TODD M. WUSCHNIG**  
Director  
CalDRE #01367230  
Direct | 818.455.8205  
twuschnig@charlesdunn.com

**CHARLES DUNN COMPANY, INC.**

12925 Riverside Drive, Suite 201 | Sherman Oaks, CA 91423 | Lic. #01201641 | charlesdunn.com

# PROPERTY DETAILS

15335 Morrison Street is a 3-story office building right off the 101 & 405 Freeway interchange.

## PROPERTY FACTS

Available: Suite 202: ± 1,199 SF  
Suite 306: ± 1,740 SF

Lease Rate: \$2.25/SF Full Service Gross

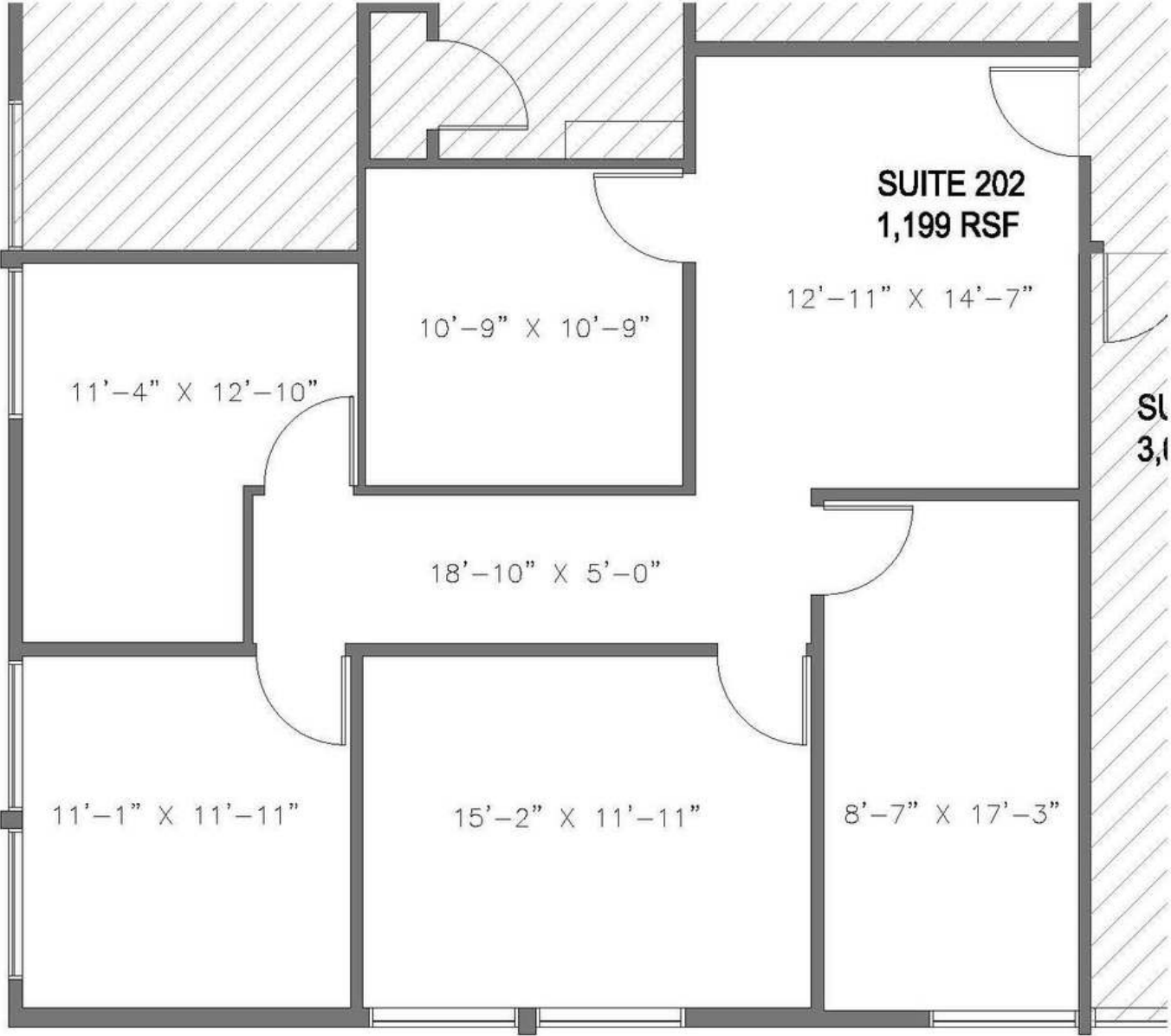
Parking: 2/1000 surface spaces free of charge

## PROPERTY HIGHLIGHTS

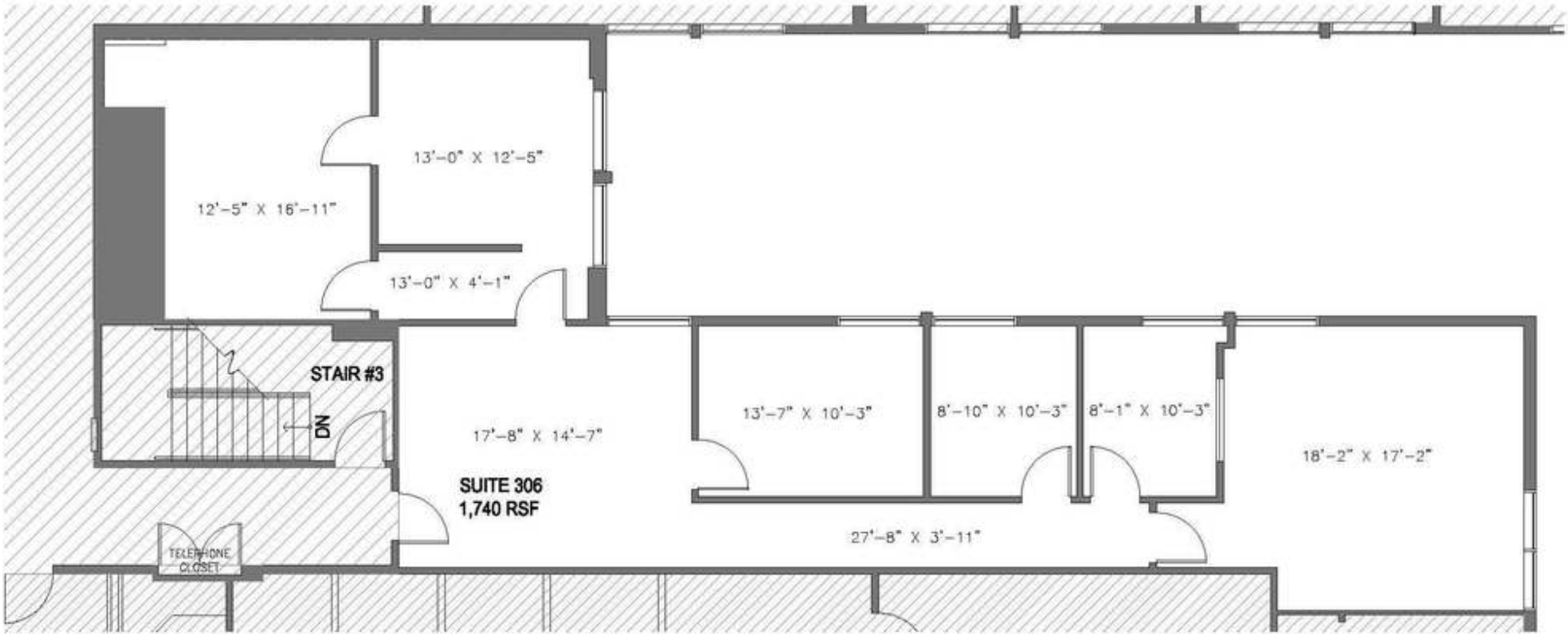
- > Free visitor parking & additional street parking
- > Deli on-site
- > Newly remodeled common areas
- > Tree-lined property
- > Sit down lobby



# FLOOR PLANS



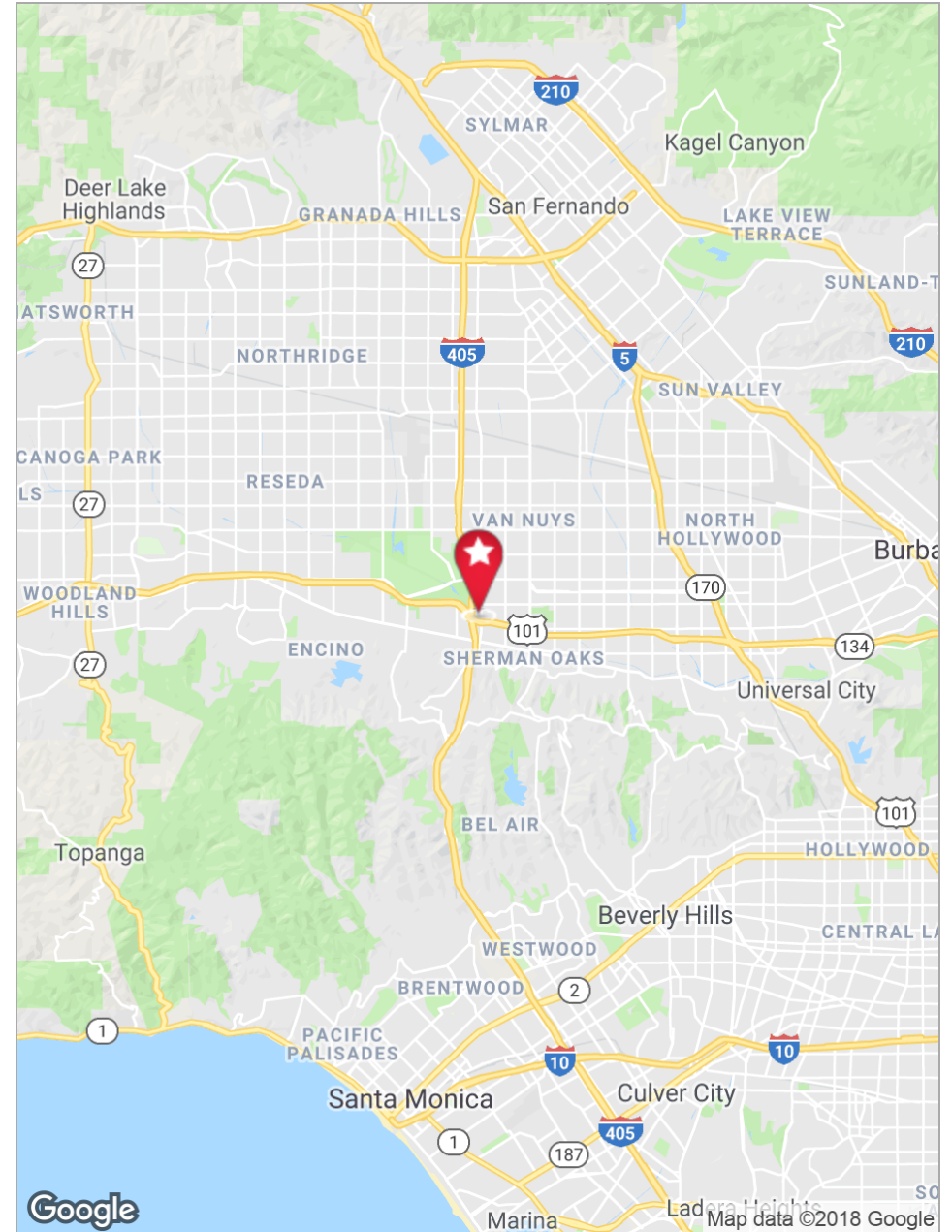
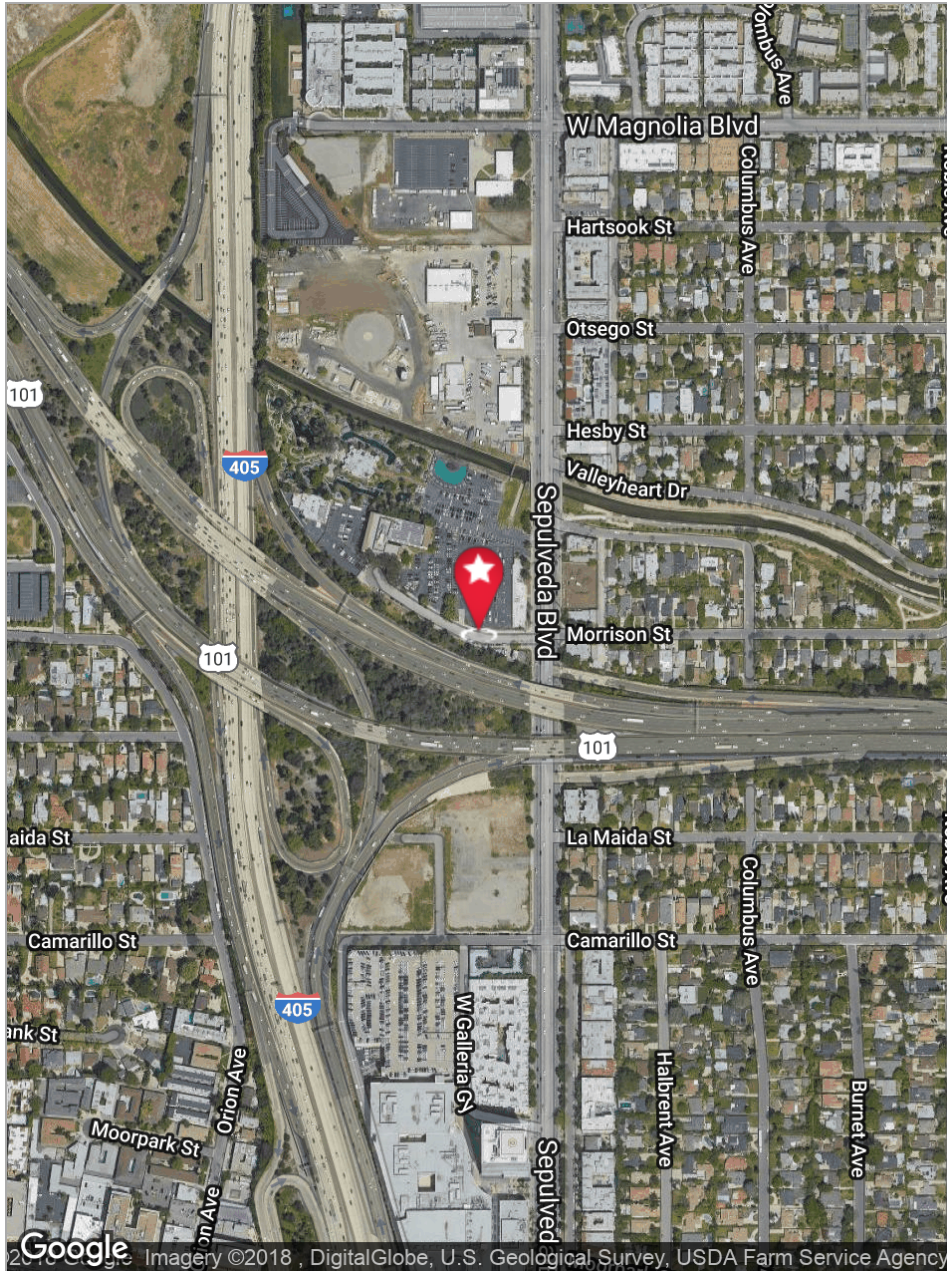
# FLOOR PLANS



# PROPERTY PHOTOS



# PROPERTY MAPS



# 15335 Morrison Street

## Sherman Oaks, CA 91403

**STACY VIERHEILIG-FRASER**

Senior Managing Director

CalDRE #00986794

Direct | 818.455.8201

[svierheilig@charlesdunn.com](mailto:svierheilig@charlesdunn.com)

**TODD M. WUSCHNIG**

Director

CalDRE #01367230

Direct | 818.455.8205

[twuschnig@charlesdunn.com](mailto:twuschnig@charlesdunn.com)

**Charles Dunn Company, Inc. | 12925 Riverside Drive, Suite 201 | Sherman Oaks, CA 91423 | Lic. #01201641 | [charlesdunn.com](http://charlesdunn.com)**

© Charles Dunn Company, Inc. These materials are based on information and content provided by others which we believe are accurate. No guarantee, warranty or representation is made by the Charles Dunn Company or its personnel, and all interested parties must independently verify its accuracy and completeness. As well, any projections, assumptions, opinion, or estimates are used for example only and do not represent the current or future performance of the identified property. Your tax, financial, legal and toxic substance advisors should conduct a careful investigation of the property and its suitability for your needs, including land use limitations.