

FOR SALE

*Subject
Property*

N Manatee County Seven Acre Site

US 19 at US 41, Palmetto, FL 34221

Total Land Size: 7.13 +/- Acres

Sales Price: \$773,190

Development site with great visibility from major highways

Property is zoned General Commercial

Additional 4.12 acre parcel to the north also available

PID #2296300003

Demographics	1 Mile	3 Miles	5 Miles
Businesses	93	1,171	3,850
Employees	584	10,912	39,631
Residents	6,291	34,125	56,821
Avg HH Income	\$55,100	\$54,790	\$56,821
2015 Daily Traffic Counts: Total Vehicles 36,300			

FOR SALES INQUIRIES, PLEASE CONTACT

Matthew B. Kezar

C 941. 720.1973

Matt@ian-black.com

IAN BLACK
REAL ESTATE

THE PLACE FOR SPACE

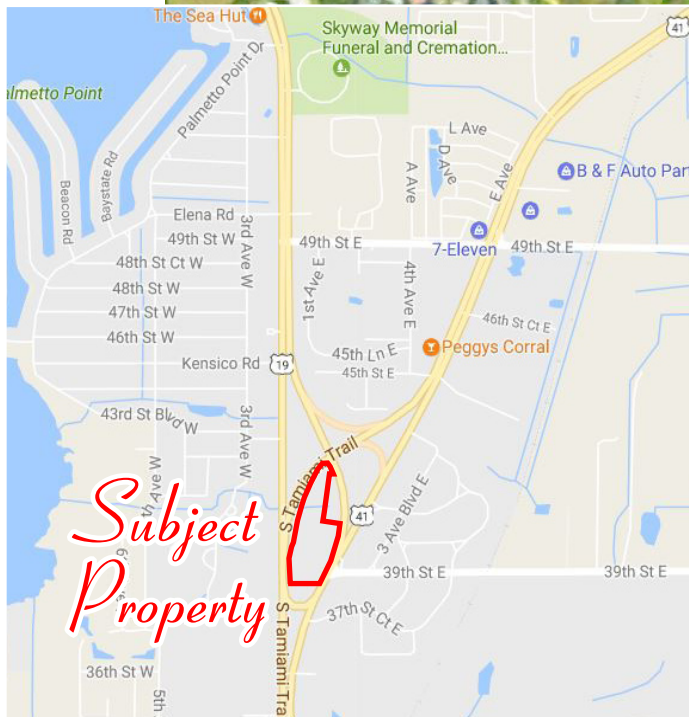
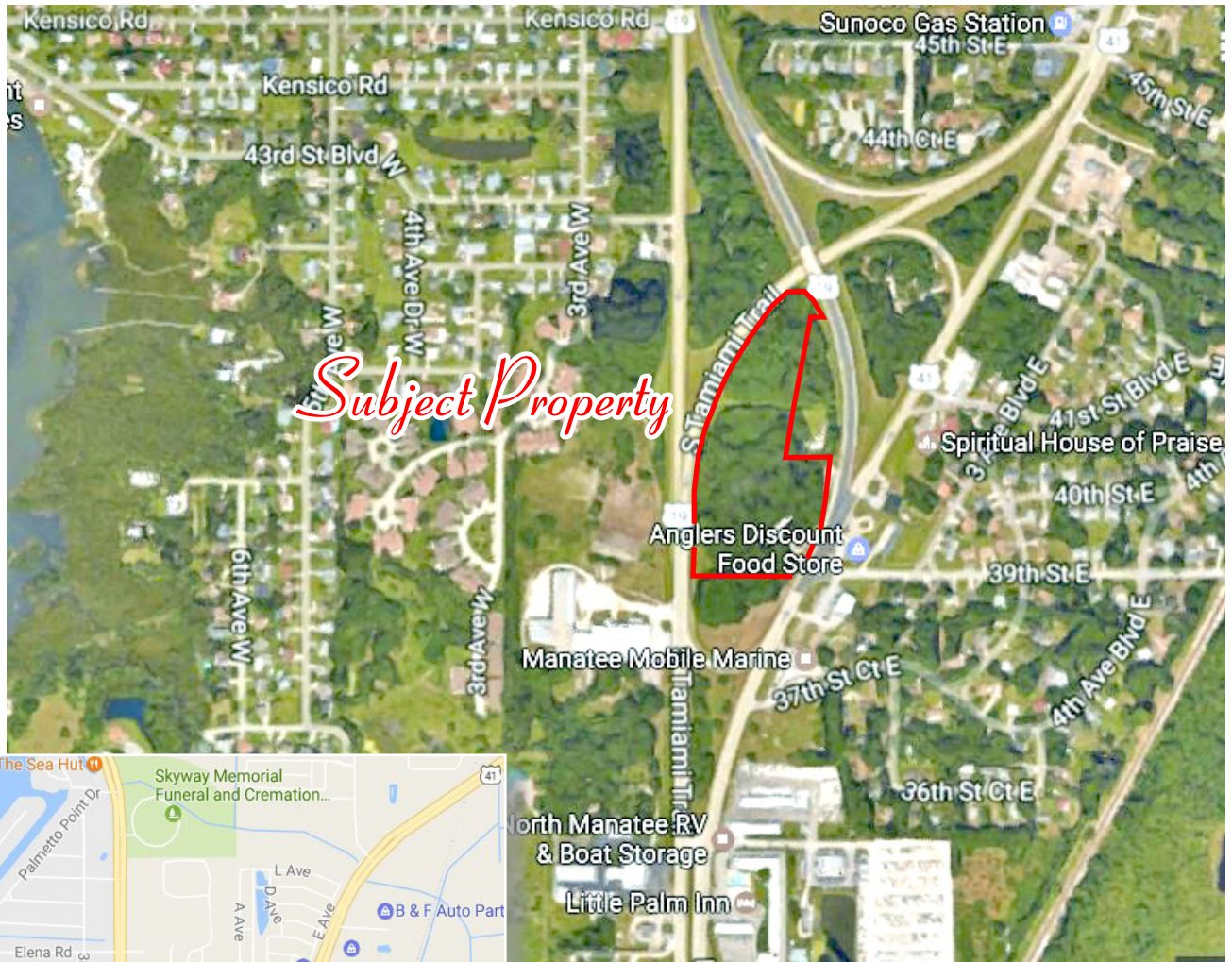
1 S School Ave, Ste 600, Sarasota FL 34238

WWW.IAN-BLACK.COM

Information deemed reliable but not guaranteed. Prices subject to change without notice.

N Manatee County Seven Acre Site

US 19 at US 41, Palmetto, FL 34221



Total Land Size: 7.13 +/- Acres

Sales Price: \$773,190

Development site with great visibility
from major highways

Property is zoned General Commercial

Additional 4.12 acre parcel to the north
is also available

PID #2296300003

FOR SALES INQUIRIES, PLEASE CONTACT

Matthew B. Kezar

C 941. 720.1973

Matt@ian-black.com

IAN BLACK
REAL ESTATE

THE PLACE FOR SPACE

1 S School Ave, Ste 600, Sarasota FL 34238

WWW.IAN-BLACK.COM

Information deemed reliable but not guaranteed. Prices subject to change without notice.