



# Daytona / Laguna Tech

15002 NE 31<sup>st</sup> Street | Redmond, Washington 98052

## STANDALONE TECH / PRODUCTION BUILDING

AVAILABLE  
NOW

36,881  
SQ FT

### CEILINGS

Approx. 13'-18'  
exposed ceilings

### USE

Great standalone  
building for  
tech/production  
companies

### BUILDING

Single story—one  
large floor plate

### HVAC

Fully conditioned

### LOADING

Grade Level &  
Dock High  
loading access

### POWER

Abundant power  
(was machine shop  
originally)

### LOCATION

Adjacent to future  
Overlake Village light  
rail station &  
Microsoft world  
headquarters

### PARKING

2 / 1,000

TYLER SLONE 425.274.4281

[SLONE@BRODERICKGROUP.COM](mailto:SLONE@BRODERICKGROUP.COM)

PAUL JERUE 425.646.5223

[JERUE@BRODERICKGROUP.COM](mailto:JERUE@BRODERICKGROUP.COM)

ERIC MEUSSNER 425.274.4282

[MEUSSNER@BRODERICKGROUP.COM](mailto:MEUSSNER@BRODERICKGROUP.COM)

AL HODGE 425.646.5240

[HODGE@BRODERICKGROUP.COM](mailto:HODGE@BRODERICKGROUP.COM)

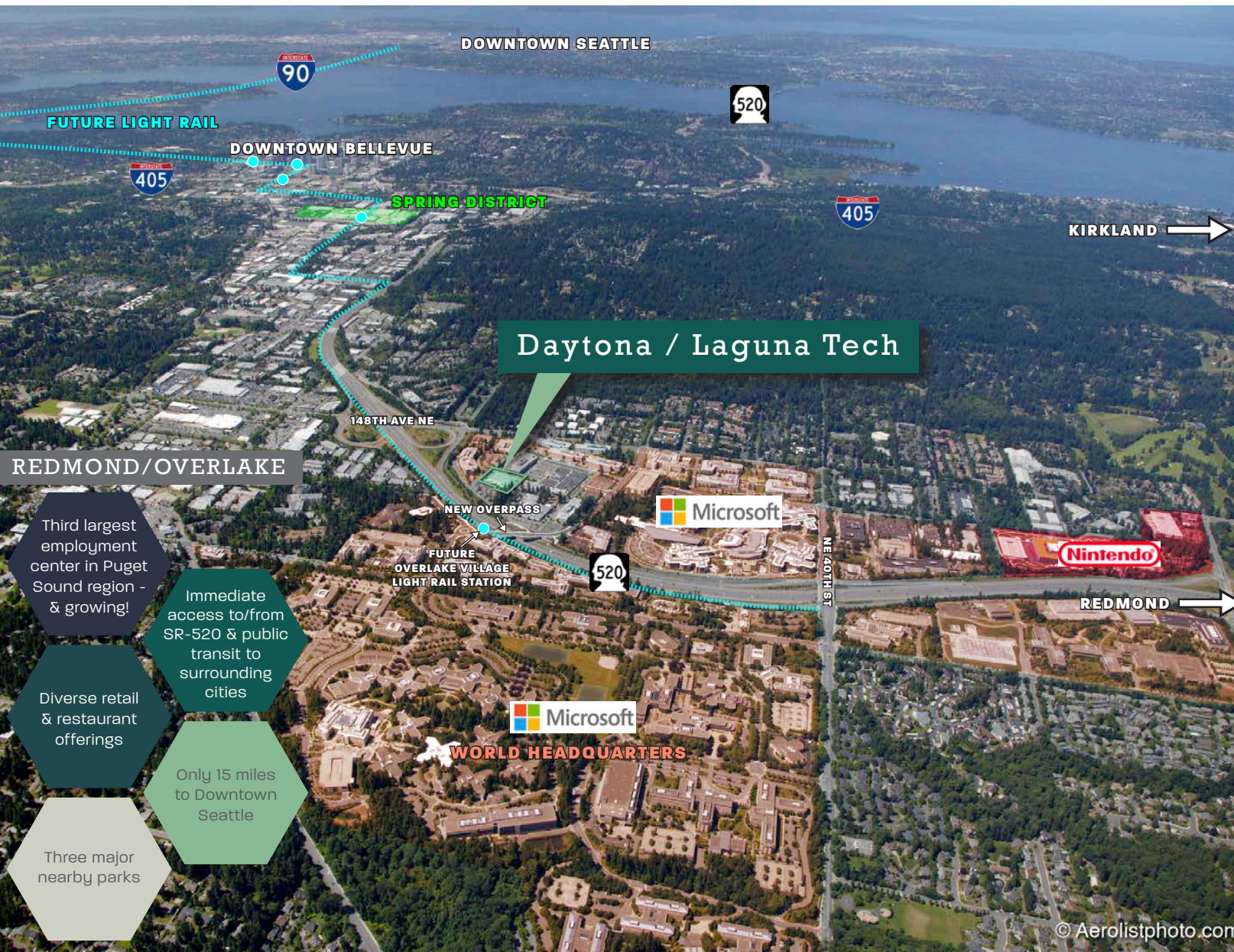


The information contained herein has been given to us by the owner or sources which we deem reliable. We have no reason to doubt its accuracy, but we do not guarantee it. Prospective tenants should carefully verify all information contained herein.

# Daytona / Laguna Tech

15002 NE 31<sup>st</sup> Street | Redmond, Washington 98052

## NEARBY AMENITIES



### RESTAURANTS

- Bai Tong Thai
- Red Robin Gourmet Burgers
- New Delhi Palace
- Panda Express
- Malay Satay Hut

### RECREATION / FITNESS

- Bellevue Golf Course
- Bridle Trails State Park
- Marymoor Park
- Pro Sports Club Bellevue
- Alaya Fit-Spa
- Monkey Bar Gym
- CrossFit Bel-Red

### HOTELS

- Fairfield Inn & Suites
- Residence Inn
- Courtyard Marriot
- Silver Cloud Inn

### BANKS

- U.S. Bank
- Bank of America
- Wells Fargo Bank
- Chase Bank

### REDMOND/OVERLAKE

Third largest employment center in Puget Sound region - & growing!

Immediate access to/from SR-520 & public transit to surrounding cities

Diverse retail & restaurant offerings

Only 15 miles to Downtown Seattle

Three major nearby parks

TYLER SLONE 425.274.4281  
[SLONE@BRODERICKGROUP.COM](mailto:SLONE@BRODERICKGROUP.COM)

PAUL JERUE 425.646.5223  
[JERUE@BRODERICKGROUP.COM](mailto:JERUE@BRODERICKGROUP.COM)

ERIC MEUSSNER 425.274.4282  
[MEUSSNER@BRODERICKGROUP.COM](mailto:MEUSSNER@BRODERICKGROUP.COM)

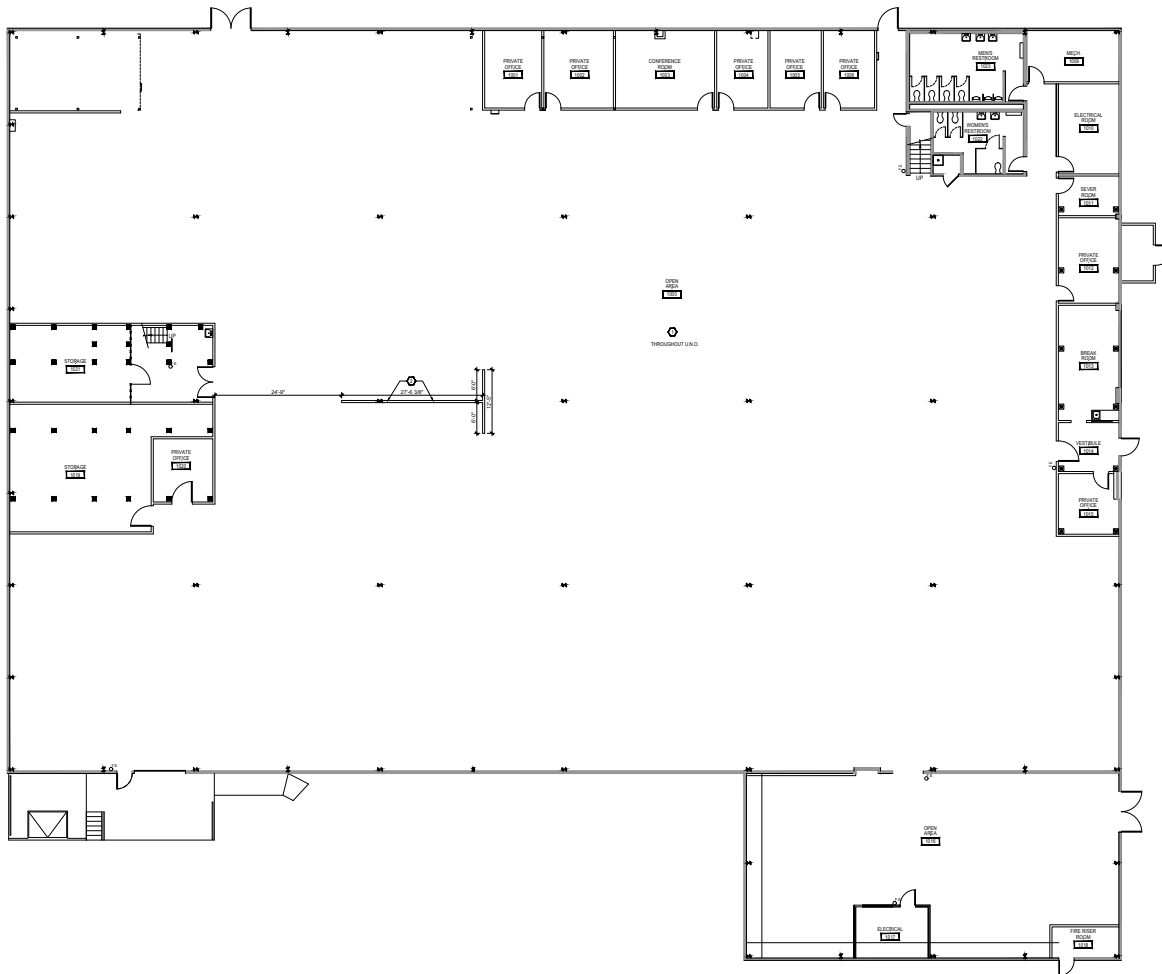
AL HODGE 425.646.5240  
[HODGE@BRODERICKGROUP.COM](mailto:HODGE@BRODERICKGROUP.COM)

The information contained herein has been given to us by the owner or sources which we deem reliable. We have no reason to doubt its accuracy, but we do not guarantee it. Prospective tenants should carefully verify all information contained herein.

# Daytona / Laguna Tech

15002 NE 31<sup>st</sup> Street | Redmond, Washington 98052

# FLOOR PLAN



# 36,881

 SQUARE FEET

## AVAILABLE NOW

- Single story—one large floor plate
- Approx. 13'-18' exposed ceilings
- Fully conditioned
- Abundant power (was machine shop originally)



 FLOOR PLAN  
SCALE 3/32"=1'-0"

# Daytona / Laguna Tech

15002 NE 31<sup>st</sup> Street | Redmond, Washington 98052

# PHOTOS



The information contained herein has been given to us by the owner or sources which we deem reliable. We have no reason to doubt its accuracy, but we do not guarantee it. Prospective tenants should carefully verify all information contained herein.