

# BEAUTIFUL INDUSTRIAL BUILDING FOR SALE

## LARGE 17,440 SF BUILDING ON 7.94 ACRES



Gorgeous Building with Incredible Views!



**For Sale: \$1,700,000**

54465 29 Palms Hwy (Hwy 62), Yucca Valley, CA

2020 (Est.) Demographics	1 Mile	3 Miles	5 Miles
Population	1,156	8,903	19,365
Avg. HH Income	\$64,437	\$65,472	\$67,455

Located at the Gateway to the High Desert  
Long-Term Custom Furniture Shop

**Approximately 17,440 Sq Ft**  
3,000± SF Showroom & Office  
14,440± SF Warehouse



- Ideal Location on Hwy 62 (29 Palm Hwy)
- Excellent Signage & Visibility
- Close to Major Retail Centers
- Upscale Custom Interior
- Built in 1954 (Renovated in 90's)
- Parking for Approximately 50 Cars Including 32 Paved Spaces
- Zoned: I-C Industrial Community
- APN: 0585-273-14 (7.94 Acres)



www.baxleyproperties.com  
Phone: 760-773-3310  
Fax: 760-773-3013  
73712 Alessandro Drive, Ste B-4, Palm Desert, CA 92260

**Matthew Longstreth**  
matthew@baxleyproperties.com  
**Cell: 949-293-1314**

DRE Lic # 01322594

**DISCLAIMER:**

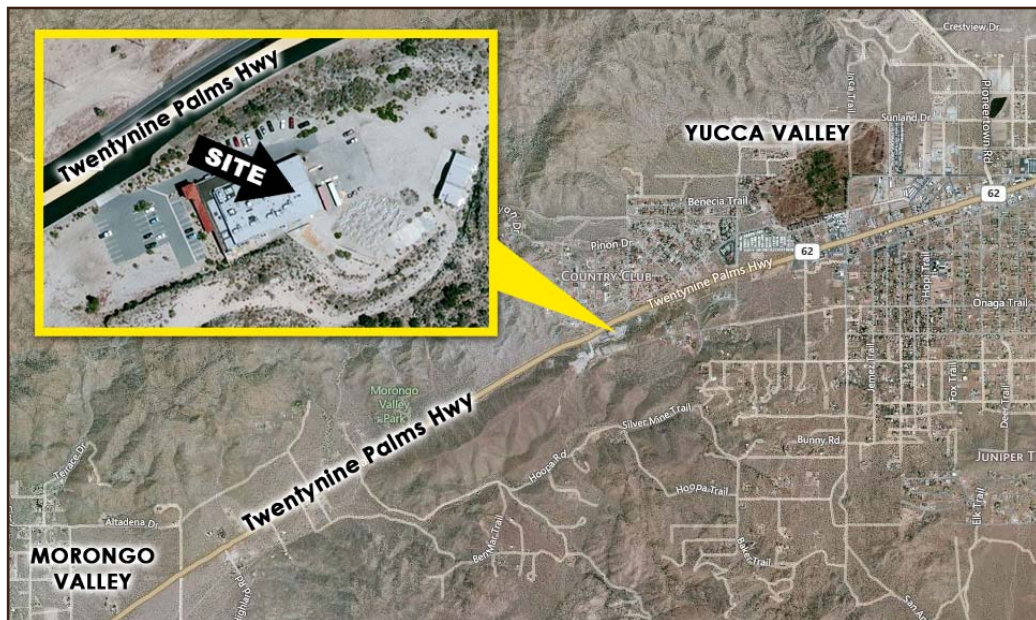
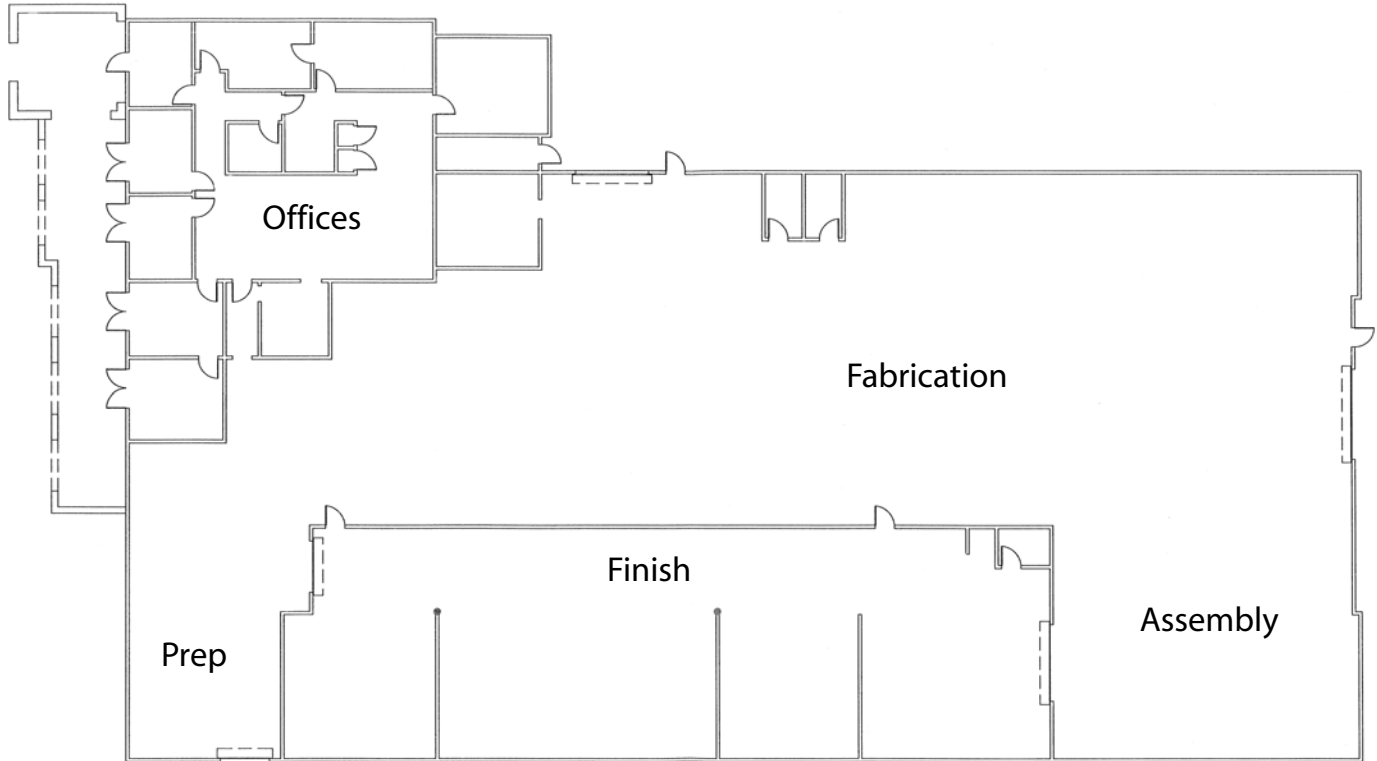
The information above has been obtained from sources believed reliable. While we do not doubt its accuracy, we have not verified it and make no guarantee, warranty or representation about it. It is your responsibility to independently confirm its accuracy and completeness. Any projections, opinions, assumptions or estimates used are for example only, and do not represent the current or future performance of the property.

9/10/2020

# BEAUTIFUL INDUSTRIAL BUILDING FOR SALE

54465 29 Palms Hwy, Yucca Valley, CA 92284

## FLOORPLAN



PLEASE NOTE:  
Measurements are approximate.

**DISCLAIMER:**

The information above has been obtained from sources believed reliable. While we do not doubt its accuracy, we have not verified it and make no guarantee, warranty or representation about it. It is your responsibility to independently confirm its accuracy and completeness. Any projections, opinions, assumptions or estimates used are for example only, and do not represent the current or future performance of the property.