

Office

For Lease

Rockwood Office Park 1409 Building



1409 140th Place Northeast | Bellevue, WA 98008

Office Spaces For Lease Located at Prominent Bel-Red Road Corridor Near Microsoft Campus & Close Proximity to Restaurant & Retail Amenities.

Dan Krekel



Senior Vice President

(425) 586-4655 | dkrekel@leibsohn.com



The information contained herein has been received from sources we deem reliable. While we have no reason to doubt its accuracy, we do not guarantee it. You are advised to independently verify all information. COPYRIGHT @ LEIBSOHN & COMPANY 2022, WASHINGTON. ALL RIGHTS RESERVED.

Rockwood Office Park | 1409 Building

1409 140th Place NE | Bellevue, WA 98008

For Lease



AVAILABILITY

SUITE	SIZE	GROSS RENT	AVAILABILITY
200	1,155 RSF	\$3,100.00/Month	2/1/2024

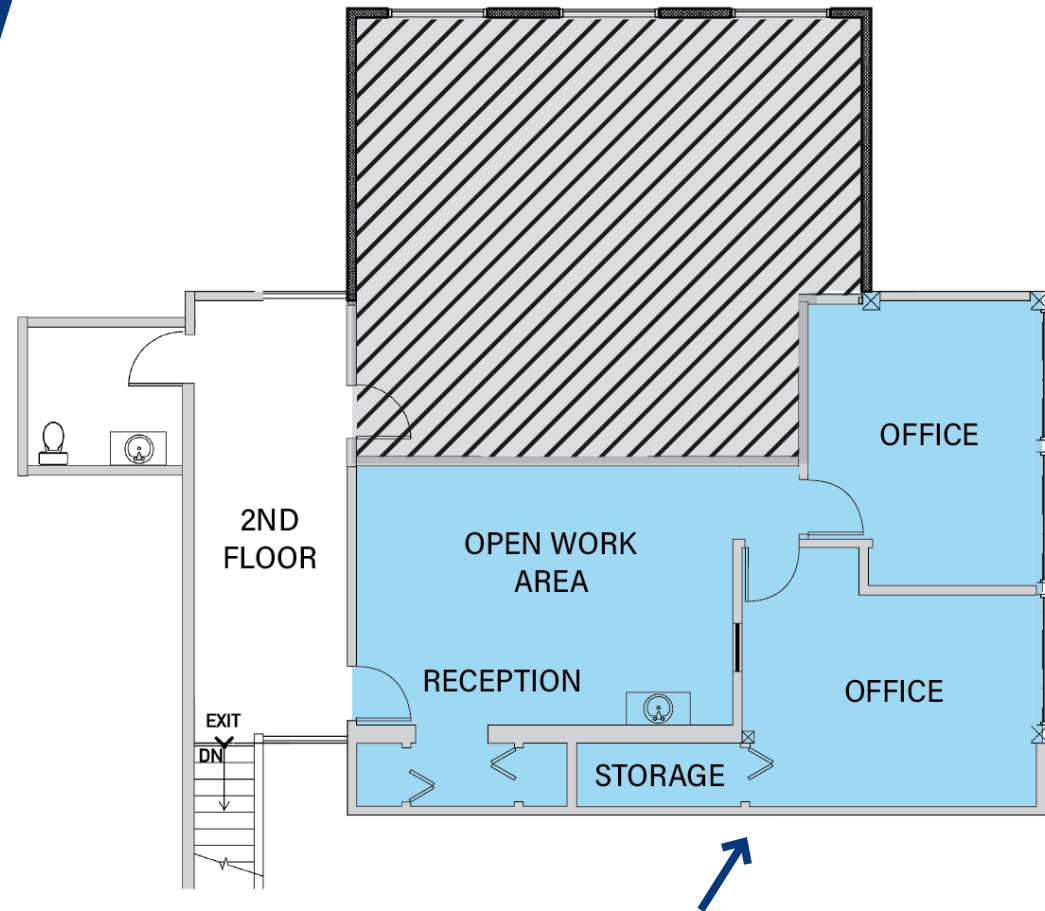
PROPERTY HIGHLIGHTS:

- Parking
 - 5.0 Stalls/1,000 RSF
 - Free Covered Parking
- Comcast BUSINESS CLASS & Fiber Optics Available
- Accessibility to SR-520 & I-405
- Located on Bus Line
- Excellent Proximity to Downtown Bellevue, Microsoft Campus
- Nearby Restaurants & Retail Amenities within Walking Distance

Office

For Lease

**Rockwood
Office Park**
1409 Building



Suite 200 | 1,155 RSF

- Available February 1, 2024
- \$3,100.00/Month, Gross

CONTACT:

Dan Krekel

(425) 586-4655 | dkrekel@leibsohn.com

 **Leibsohn
& Company**

