

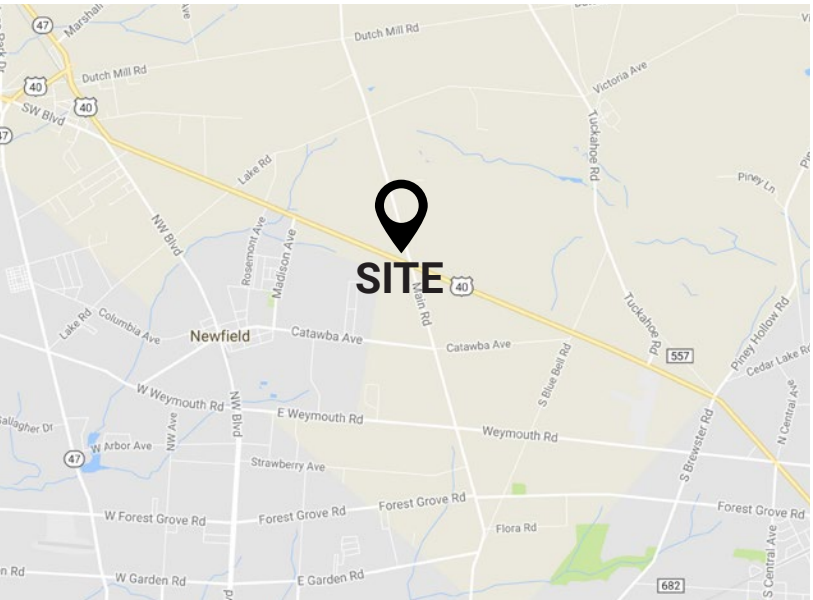
# ±13 ACRES AVAILABLE FOR REDEVELOPMENT

1420 - 1444 HARDING HIGHWAY, NEWFIELD, NJ 08344

**FOR SALE**  
**\$595,000**

## PROPERTY FEATURES

- ✓ 13+ Acres available for redevelopment at traffic light intersection
- ✓ Over 14,000+ VPD
- ✓ All 13 Acres have been cleared and are ready to be developed
- ✓ Located at the intersection of Main Road and Harding Highway
- ✓ Zoning allows for a variety of uses



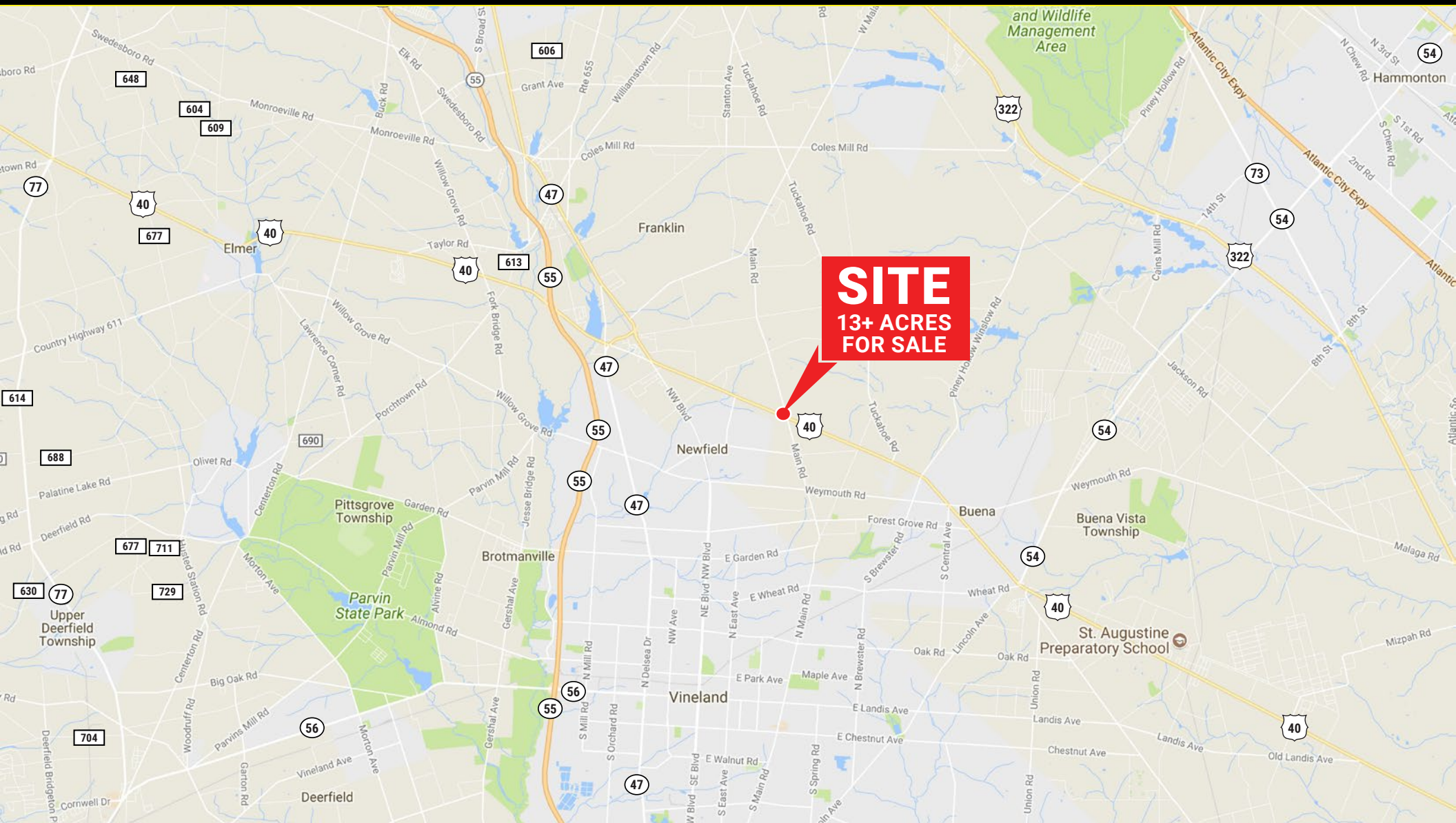
## CONTACT US

**MARK TRANI**  
Phone: 610.359.1100  
Cell: 302.383.5156  
Email: m.trani@zmcre.com

**CHASE GUNTHER**  
Phone: 610.359.1100  
Cell: 610.505.2242  
Email: cgunther@zmcre.com

1306 Wilmington Pike, Suite A-2  
West Chester, PA 19382  
610.359.1100  
[www.zmcre.com](http://www.zmcre.com)

# NEWFIELD AREA LOCATION MAP: 1420 - 1444 HARDING HIGHWAY



**SITE**  
**13+ ACRES**  
**FOR SALE**



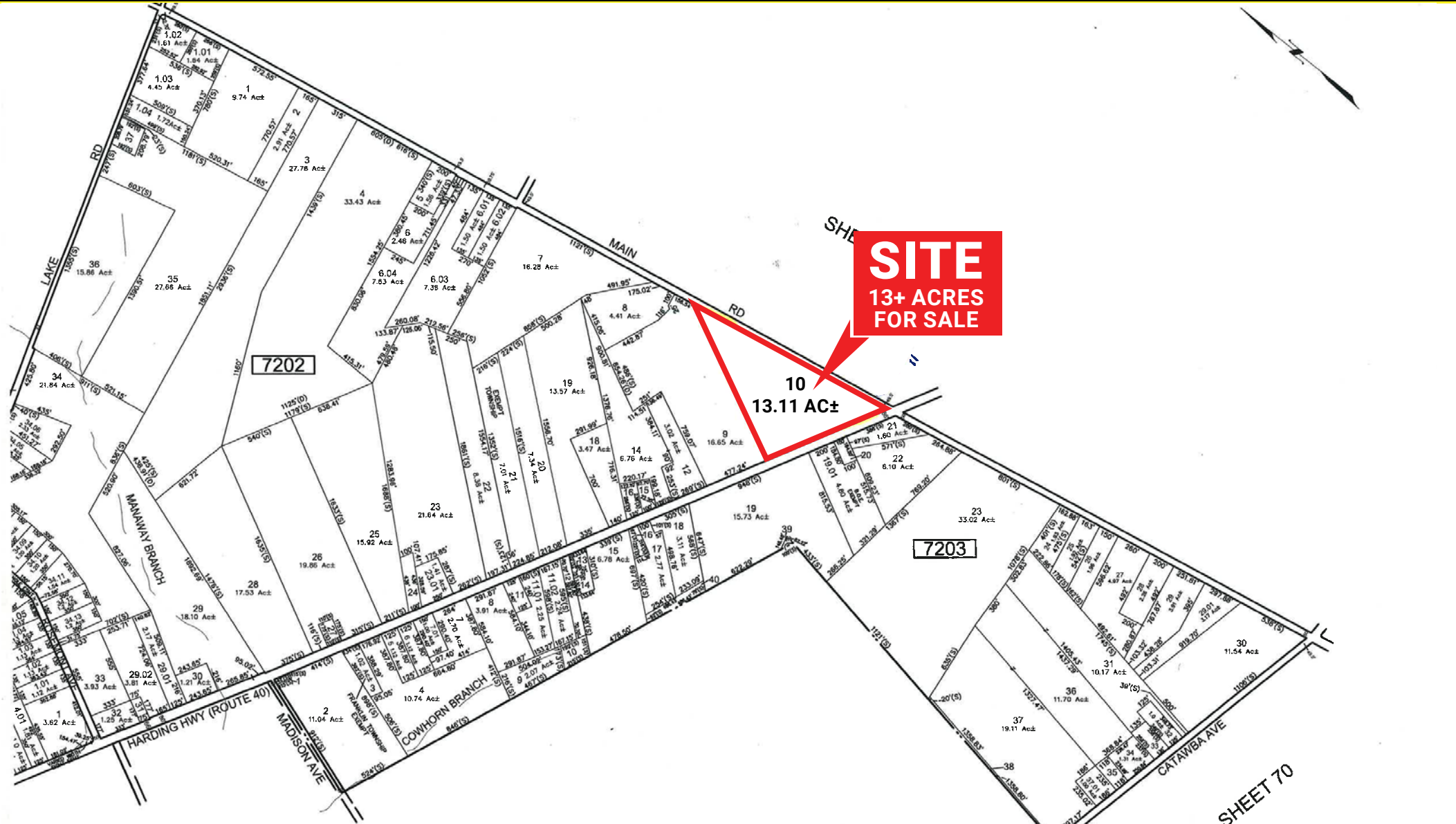
## CONTACT US

**MARK TRANI**  
Phone: 610.359.1100  
Cell: 302.383.5156  
Email: m.trani@zmcre.com

**CHASE GUNTHER**  
Phone: 610.359.1100  
Cell: 610.505.2242  
Email: cgunther@zmcre.com

1306 Wilmington Pike, Suite A-2  
West Chester, PA 19382  
610.359.1100  
[www.zmcre.com](http://www.zmcre.com)

# NEWFIELD TAX MAP: 1420 - 1444 HARDING HIGHWAY



## CONTACT US

**MARK TRANI**  
Phone: 610.359.1100  
Cell: 302.383.5156  
Email: m.trani@zmcre.com

**CHASE GUNTHER**  
Phone: 610.359.1100  
Cell: 610.505.2242  
Email: cgunther@zmcre.com

1306 Wilmington Pike, Suite A-2  
West Chester, PA 19382  
610.359.1100  
[www.zmcre.com](http://www.zmcre.com)

# ABOUT ZOMMICK McMAHON COMMERCIAL REAL ESTATE

Zommick McMahon Commercial Real Estate, Inc. has been a Metro Philadelphia Area staple since its inception in 1949. The Company was founded by Joseph Zommick, and continues today with Ryan McMahon and his highly experienced staff, whom are all results-oriented professionals.

## SOME OF OUR SATISFIED CLIENTS:



## CONTACT US

### MARK TRANI

Phone: 610.359.1100  
Cell: 302.383.5156  
Email: m.trani@zmcre.com

### CHASE GUNTHER

Phone: 610.359.1100  
Cell: 610.505.2242  
Email: cgunther@zmcre.com

1306 Wilmington Pike, Suite A-2  
West Chester, PA 19382  
610.359.1100  
[www.zmcre.com](http://www.zmcre.com)