

MIKE'S WINE & SPIRITS

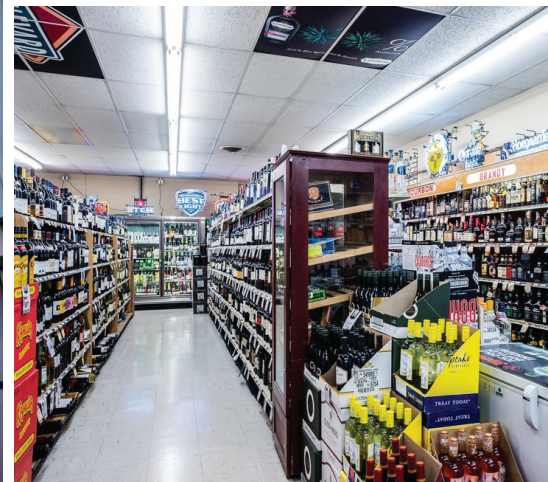
1106 WESTPORT RD, KANSAS CITY, MO 64111



REECE

COMMERCIAL REAL ESTATE

a Berkshire Hathaway Affiliate



HIGHLIGHTS

- 3,200 SF Retail Space
- Across the Street from New Quik Trip
- High Profile
- Building Signage & Pylon Signage
- Free Standing
- Less than a Mile from KU Medical Center

FOR LEASE

\$17.50/SF NNN

DEMOGRAPHICS

	1 Mile	3 Mile	5 Mile
2019 POPULATION	23,096	112,489	278,882
2019 AVG HOUSEHOLD INCOME	\$71,296	\$84,094	\$73,166

John Sweeney, CCIM

Office: 913-945-3718

Mobile 913-461-6326

Email: john@reececommercial.com

The information above has been obtained from sources believed reliable. While we do not doubt its accuracy we have not verified it and make no guarantee, warranty or representation about it. It is your responsibility to independently confirm its accuracy and completeness. Any projections, opinions, assumptions, or estimates used are for example only and do not represent the current or future performance of the property. You and your advisors should conduct a careful, independent investigation of the property to determine to your satisfaction the suitability of the property for your needs.

© 2019

AERIALS

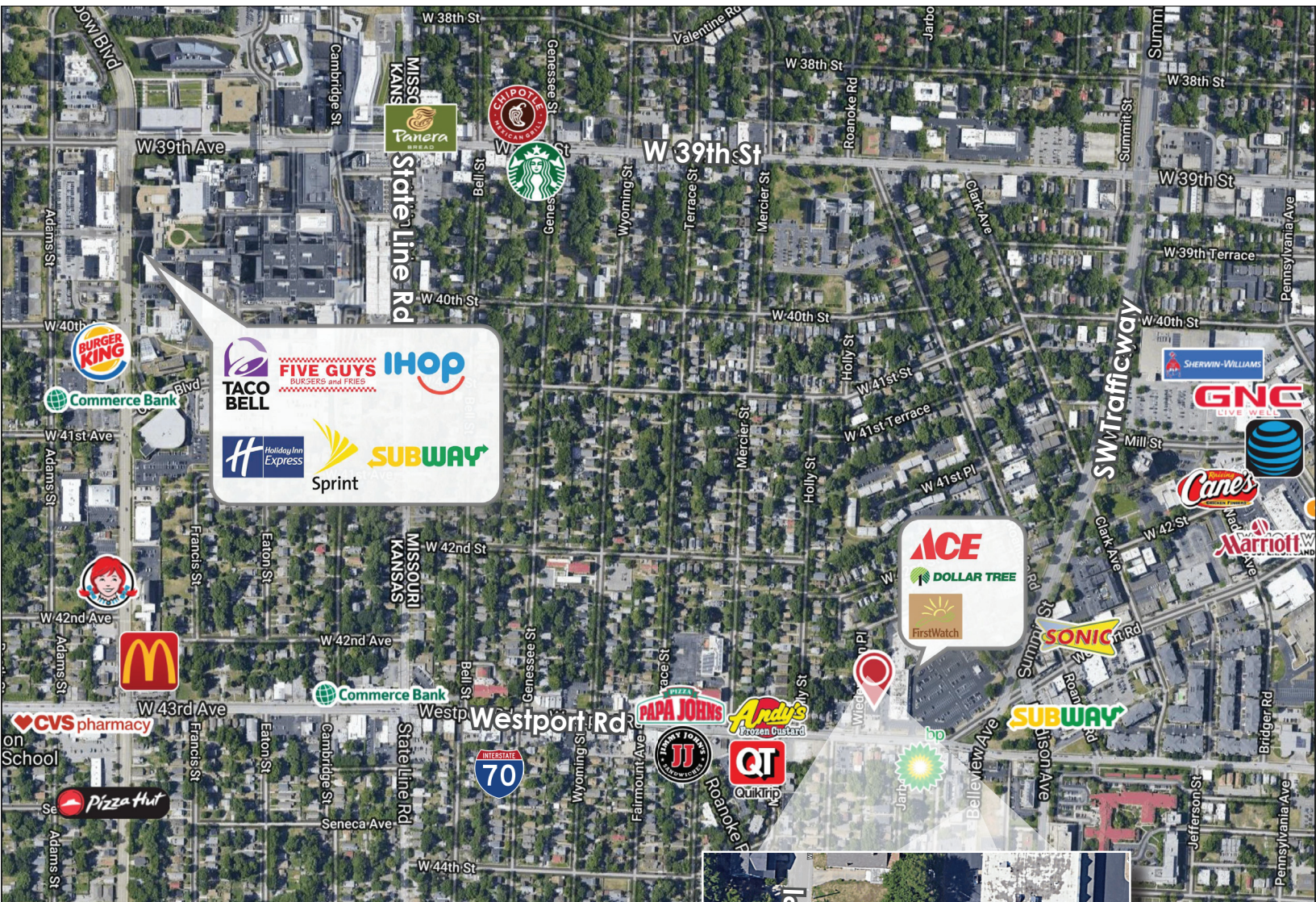
1106 WESTPORT RD, KANSAS CITY, MO 64111



REECE

COMMERCIAL REAL ESTATE

a Berkshire Hathaway Affiliate



John Sweeney, CCIM

Office: 913-945-3718

Mobile 913-461-6326

Email: john@reececommercial.com

The information above has been obtained from sources believed reliable. While we do not doubt its accuracy we have not verified it and make no guarantee, warranty or representation about it. It is your responsibility to independently confirm its accuracy and completeness. Any projections, opinions, assumptions, or estimates used are for example only and do not represent the current or future performance of the property. You and your advisors should conduct a careful, independent investigation of the property to determine to your satisfaction the suitability of the property for your needs.

© 2019