



1020

19TH STREET, NW

FEATURES

- Lobby Attendant / Security Guard
- Parking in the Building
- Shared Conference Facility
- One Block from the Farragut West Orange/Silver/Blue Line Metro
- Two Blocks from the Farragut North Red Line Metro
- Convenient to Hotels, Restaurants, and Shopping



SUITE	SIZE / RSF	POSSESSION	RATE / FS
LL20	2,804	Immediate	\$30.00
250	3,098	Immediate	\$47.50
330	1,263	Immediate	\$45.50 - \$47.50
550	2,237	Immediate	\$46.50 - \$48.50
725	2,884	Immediate	\$46.50 - \$48.50
750	2,562	Immediate	\$46.50 - \$48.50
875	2,005	60 Days	\$45.50 - \$47.50
890	2,118	Immediate	\$47.50
895	1,387	Immediate	\$46.50 - \$48.50

FOR LEASING INFORMATION, PLEASE CONTACT:

SETH A. BENHARD
Senior Managing Director
+1 202 719 6238
Seth.Benhard@am.jll.com

JULIA M. SCOTT
Vice President
+1 202 719 5580
Julia.Scott@am.jll.com

MAURA P. TESCHNER
Senior Associate
+1 202 719 6213
Maura.Teschner@am.jll.com

**ZUCKERMAN
GRAVELY**

JLL.COM/DC

1020

19TH STREET, NW



CONFERENCE ROOM FEATURES:

- Interchangeable Tables
- Additional Seating Available
- Catering Bar
- Seating Capacity: 35
- Table Capacity: 12
- WiFi Access

FOR LEASING INFORMATION, PLEASE CONTACT:

SETH A. BENHARD
Senior Managing Director
+1 202 719 6238
Seth.Benhard@am.jll.com

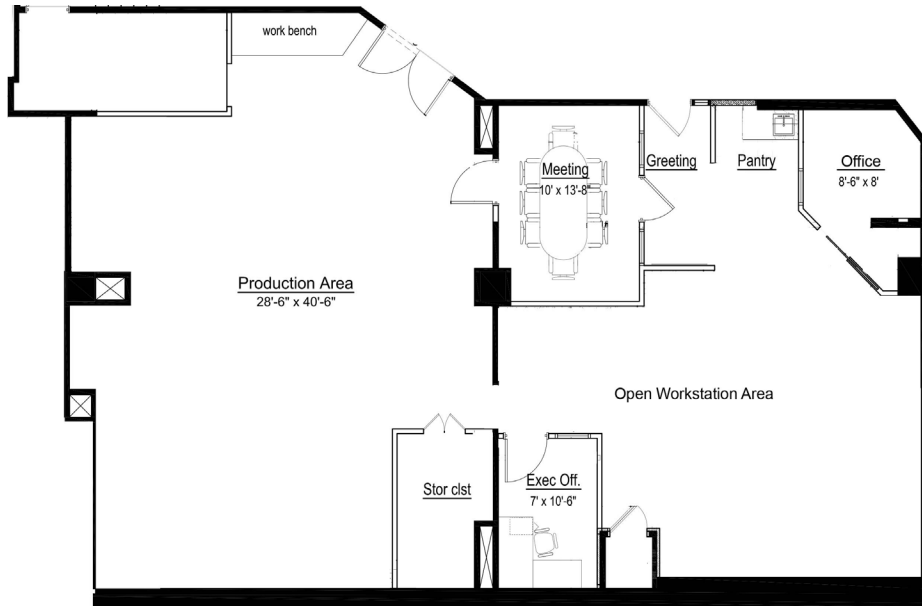
JULIA M. SCOTT
Vice President
+1 202 719 5580
Julia.Scott@am.jll.com

MAURA P. TESCHNER
Senior Associate
+1 202 719 6213
Maura.Teschner@am.jll.com

1020 19TH STREET, NW
WASHINGTON, DC

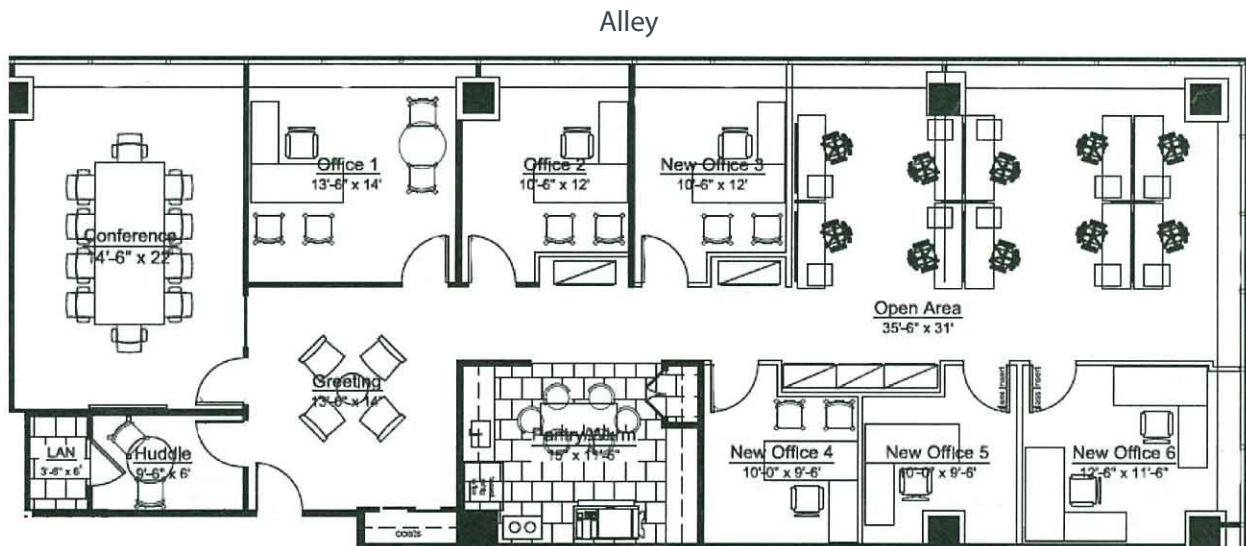
SUITE LL20

As-Built
2,804 SF



SUITE 250

As-Built
3,098 SF



FOR LEASING INFORMATION, PLEASE CONTACT:

SETH A. BENHARD
Senior Managing Director
+1 202 719 6238
Seth.Benhard@am.jll.com

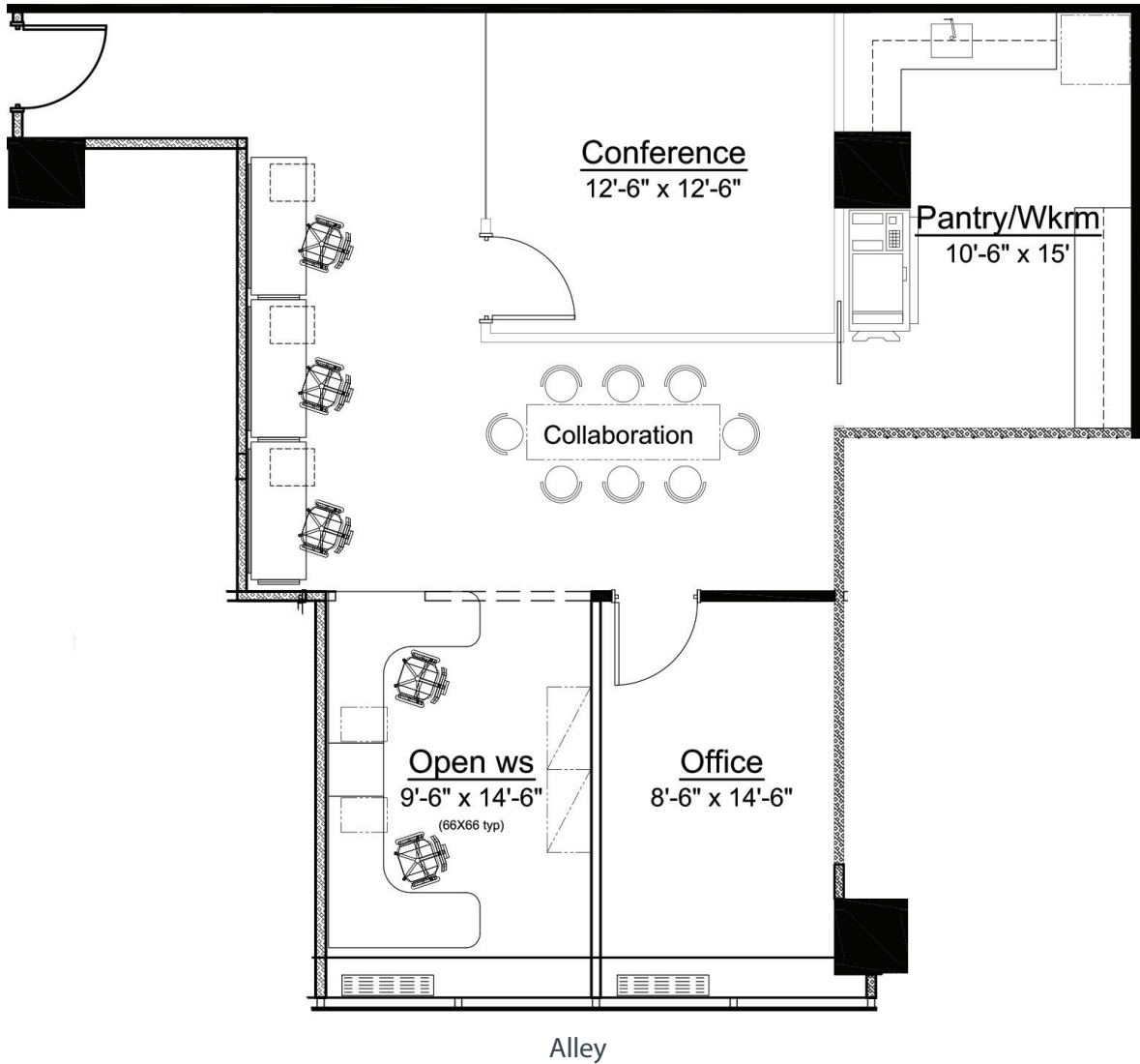
JULIA M. SCOTT
Vice President
+1 202 719 5580
Julia.Scott@am.jll.com

MAURA P. TESCHNER
Senior Associate
+1 202 719 6213
Maura.Teschner@am.jll.com

SUITE 330

As-Built
1,263 SF

1020 19TH STREET, NW
WASHINGTON, DC



FOR LEASING INFORMATION, PLEASE CONTACT:

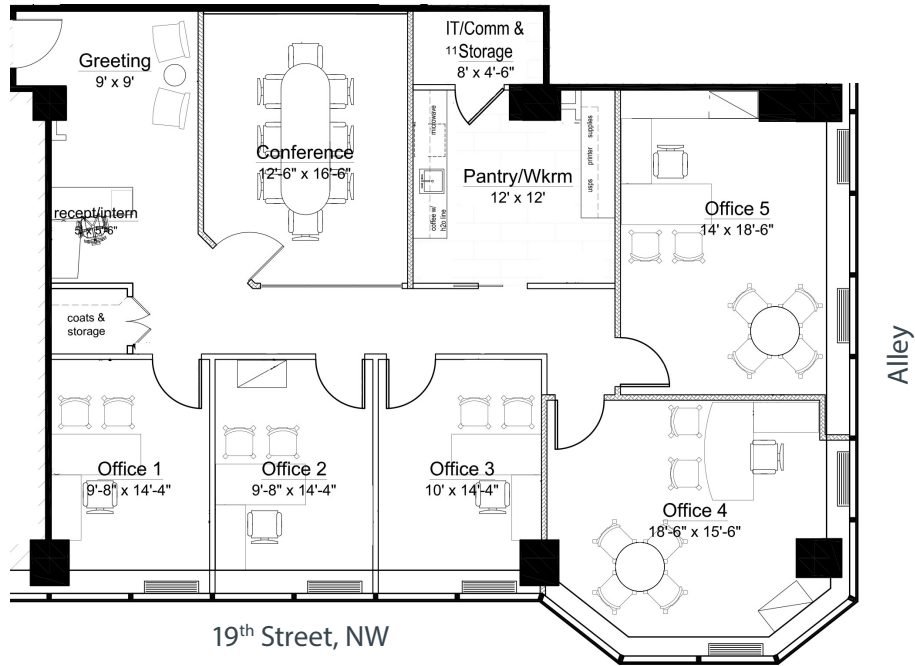
SETH A. BENHARD
Senior Managing Director
+1 202 719 6238
Seth.Benhard@am.jll.com

JULIA M. SCOTT
Vice President
+1 202 719 5580
Julia.Scott@am.jll.com

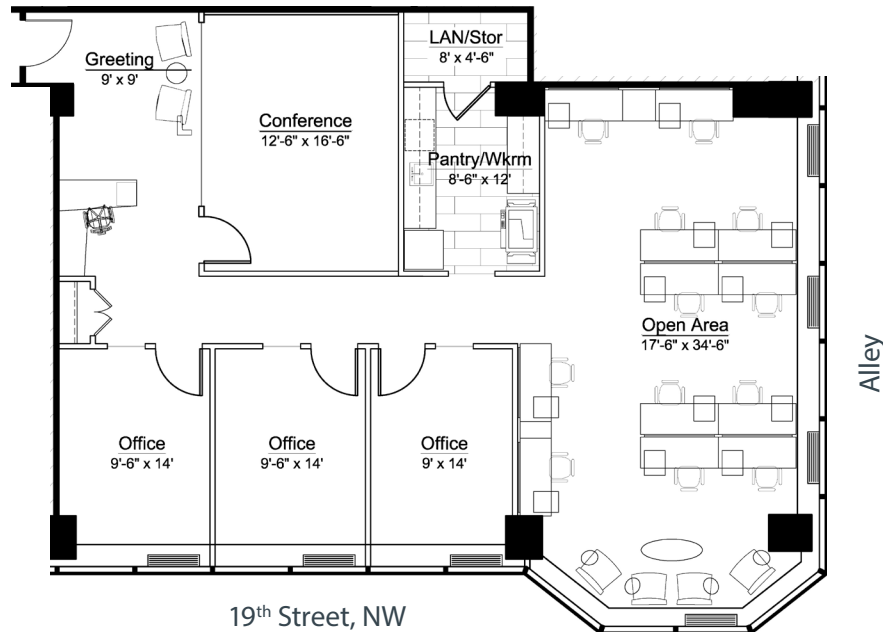
MAURA P. TESCHNER
Senior Associate
+1 202 719 6213
Maura.Teschner@am.jll.com

1020 19TH STREET, NW
WASHINGTON, DC

SUITE 550
As-Built SPEC
2,237 SF



SUITE 550
Marketing Plan
2,237 SF



FOR LEASING INFORMATION, PLEASE CONTACT:

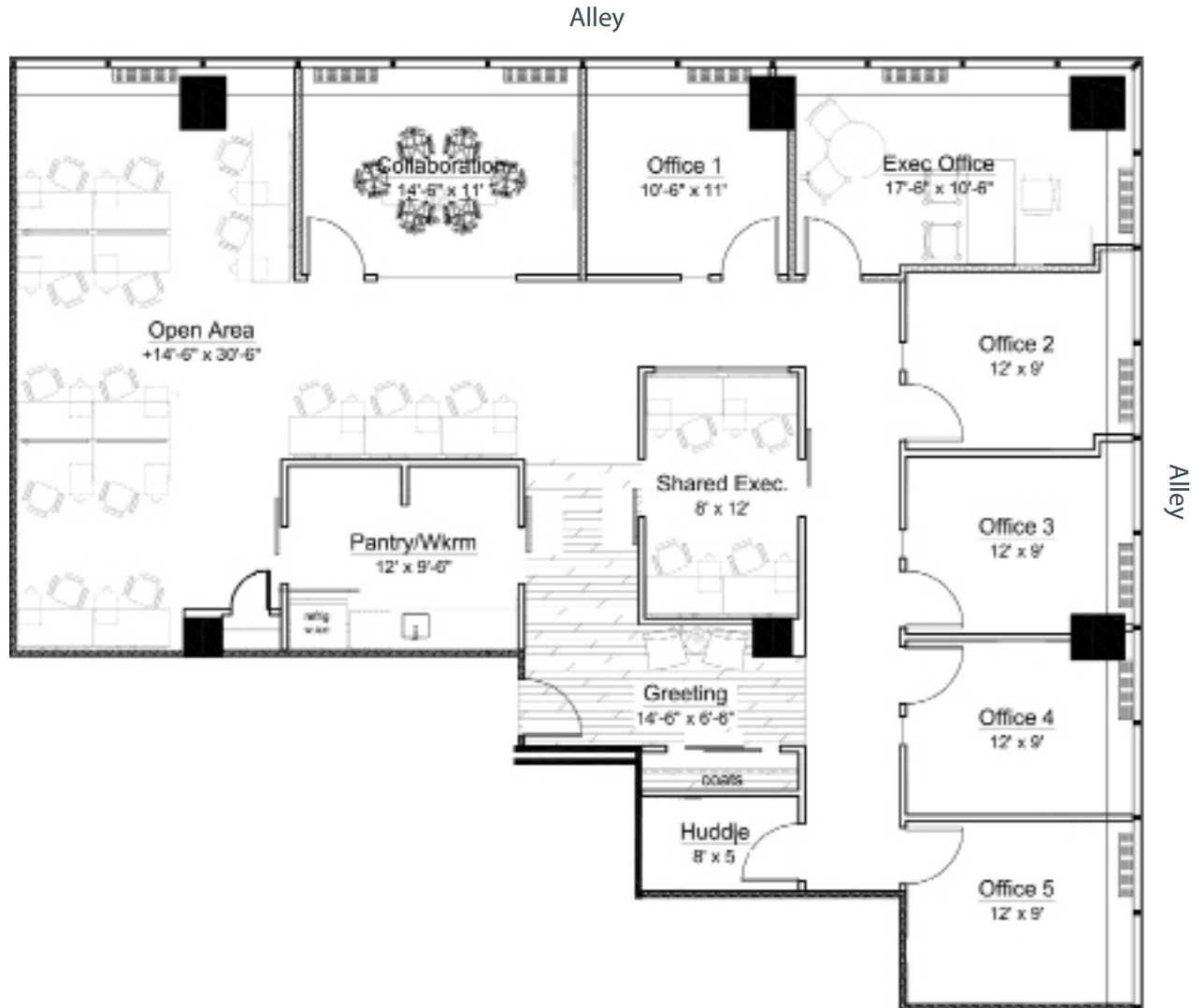
SETH A. BENHARD
Senior Managing Director
+1 202 719 6238
Seth.Benhard@am.jll.com

JULIA M. SCOTT
Vice President
+1 202 719 5580
Julia.Scott@am.jll.com

MAURA P. TESCHNER
Senior Associate
+1 202 719 6213
Maura.Teschner@am.jll.com

SUITE 725

As-Built
2,884 SF



FOR LEASING INFORMATION, PLEASE CONTACT:

SETH A. BENHARD
Senior Managing Director
+1 202 719 6238
Seth.Benhard@am.jll.com

JULIA M. SCOTT
Vice President
+1 202 719 5580
Julia.Scott@am.jll.com

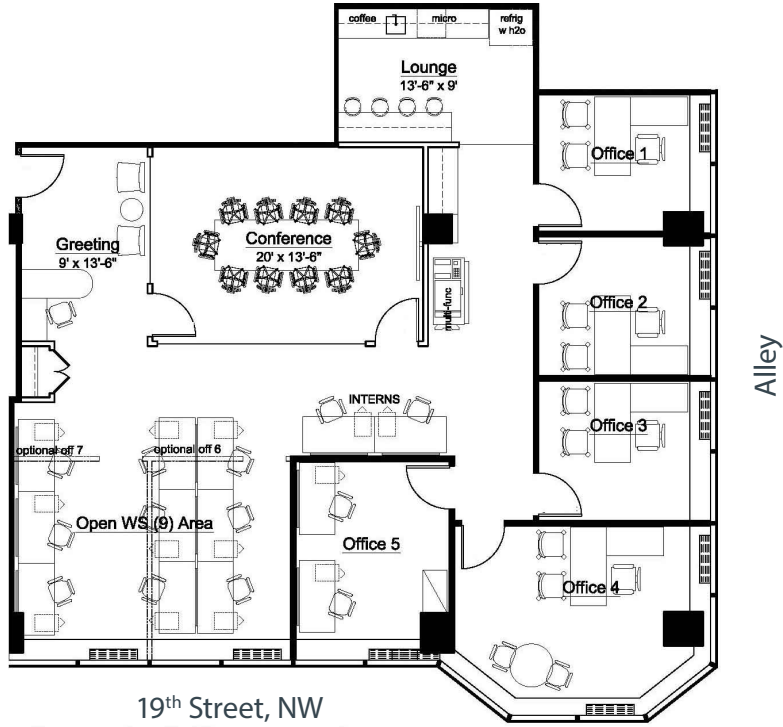
MAURA P. TESCHNER
Senior Associate
+1 202 719 6213
Maura.Teschner@am.jll.com



SUITE 750

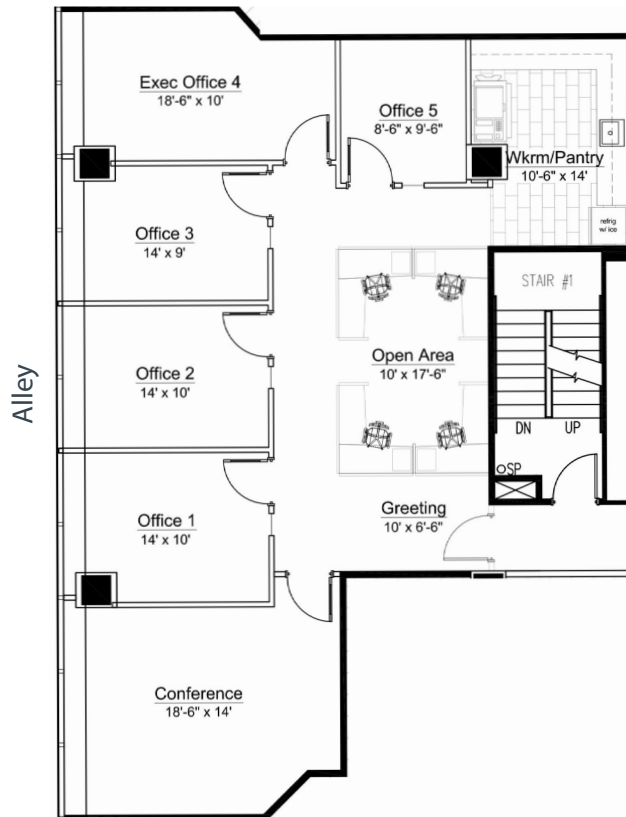
As Built
2,562 SF

1020 19TH STREET, NW
WASHINGTON, DC



SUITE 875

As Built
2,005 SF



FOR LEASING INFORMATION, PLEASE CONTACT:

SETH A. BENHARD
Managing Director
+1 202 719 6238
Seth.Benhard@am.jll.com

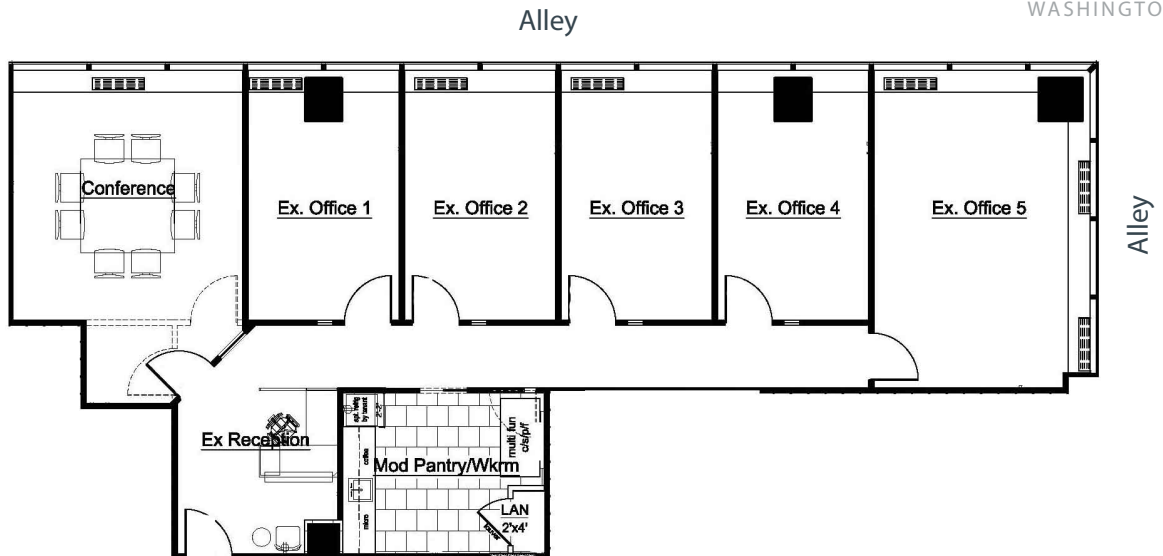
JULIA M. SCOTT
Vice President
+1 202 719 5580
Julia.Scott@am.jll.com

MAURA P. TESCHNER
Associate
+1 202 719 6213
Maura.Teschner@am.jll.com

1020 19TH STREET, NW
WASHINGTON, DC

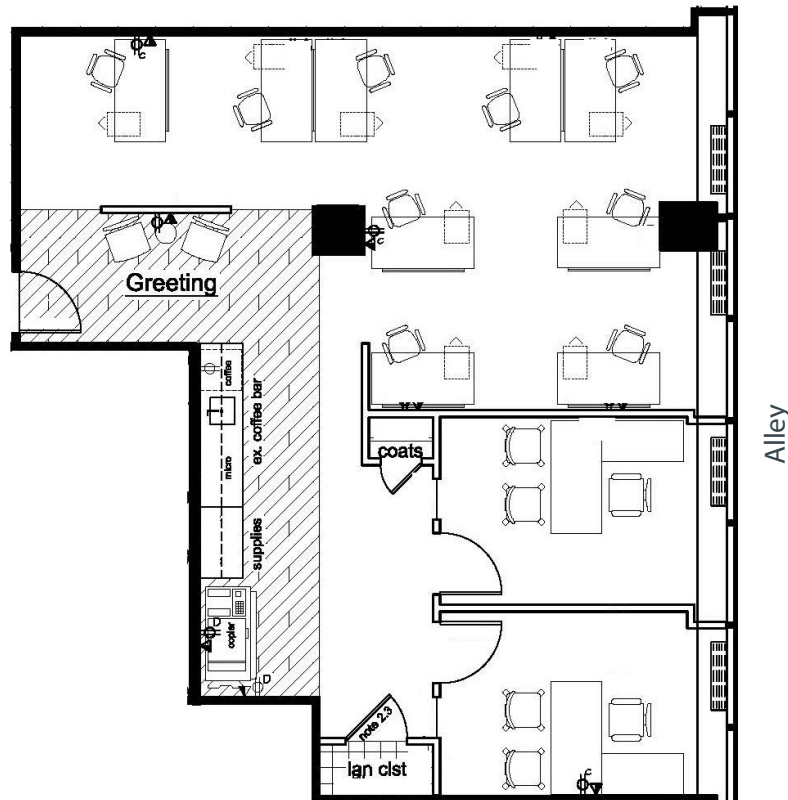
SUITE 890

As Built
2,118 SF



SUITE 895

As Built
1,387 SF



FOR LEASING INFORMATION, PLEASE CONTACT:

SETH A. BENHARD
Senior Managing Director
+1 202 719 6238
Seth.Benhard@am.jll.com

JULIA M. SCOTT
Vice President
+1 202 719 5580
Julia.Scott@am.jll.com

MAURA P. TESCHNER
Senior Associate
+1 202 719 6213
Maura.Teschner@am.jll.com