

COMAR CENTRE I

1S660 MIDWEST ROAD



LOCATION MATTERS.

Conveniently Located in the
Center of Oakbrook Terrace

FOR MORE INFORMATION OR TO ARRANGE A TOUR, PLEASE CONTACT:
CHRIS SURICO 630 234 5575 csurico@bradfordallen.com

A work space with room
to BREATHE:

Suite 300 | 9,047 SF | \$25.50 MG

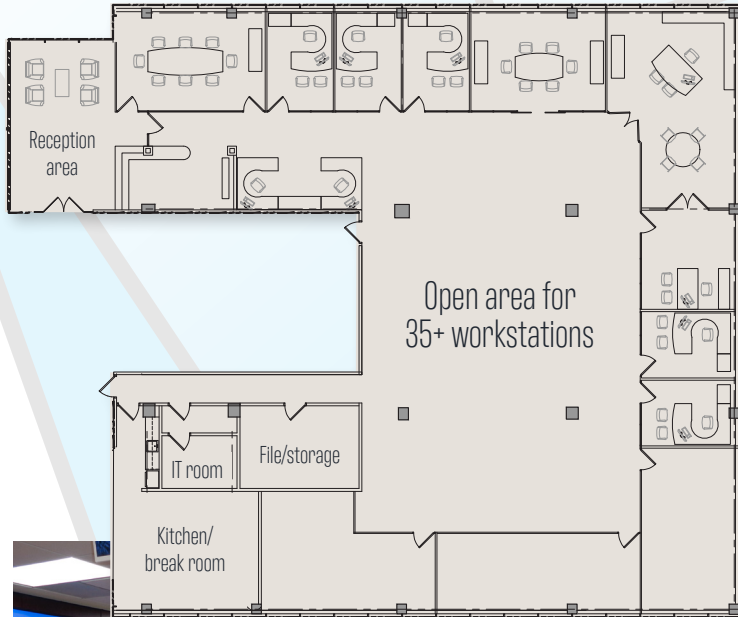
- ◆ Prominent elevator ID with double door glass entry
- ◆ Contemporary, high-end custom finishes
- ◆ All furniture negotiable including 35+ Allsteel/Terrace 6 x 6 workstations
- ◆ Modern, large break room and kitchen overlooking atrium
- ◆ Reception seating area with built-in reception desk

EXCLUSIVE LEASING AGENT
BA BRADFORD
ALLEN



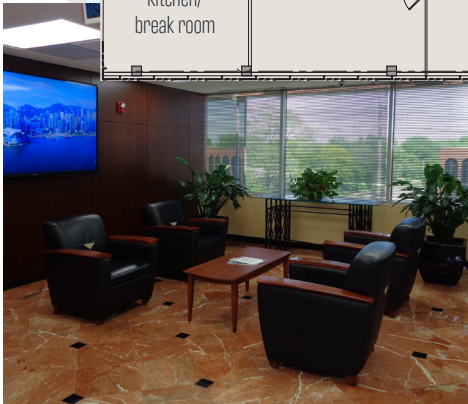
COMAR CENTRE I

1S660 MIDWEST ROAD



Suite 300 9,047 SF

- ◆ Store front glass-enclosed conference rooms for 6 and 8 people
- ◆ Private offices (6)
- ◆ Classroom
- ◆ Executive private office (1)
- ◆ Open collaboration areas (2)



FOR MORE INFORMATION OR TO ARRANGE A TOUR, PLEASE CONTACT:
CHRIS SURICO 630 234 5575 csurico@bradfordallen.com

EXCLUSIVE LEASING AGENT
BA BRADFORD ALLEN