

COMING SOON! NEW SOUTH TAMPA MEDICAL OFFICE SPACE
110 S. MACDILL AVENUE, TAMPA, FL 33609

AVAILABLE

2nd Floor: Space 1 – 2,610 RSF
2nd Floor: Space 2 - 4,616 RSF



DEAL POINTS

Asking Rent	\$29.50 PSF NNN
Term	10 Years
TI Allowance	\$65 PSF
Building Square Footage	20,000 SF
Groundbreaking Aug 2018	

COMING SOON! NEW SOUTH TAMPA MEDICAL OFFICE SPACE

110 S. MACDILL AVENUE, TAMPA, FL 33609

Property Overview

This new Class A South Tampa Two-Story Medical Office Building will be approx. 15,000 square feet servicing the medical needs in the South Tampa market. Detailed as follows:

South Tampa is an upscale community in Tampa located within 2.50 miles of TGH and St. Joseph's Main Campus's and 0.60 miles of Memorial Hospital. The property is also in close proximity to Downtown Tampa & Tampa International Airport.

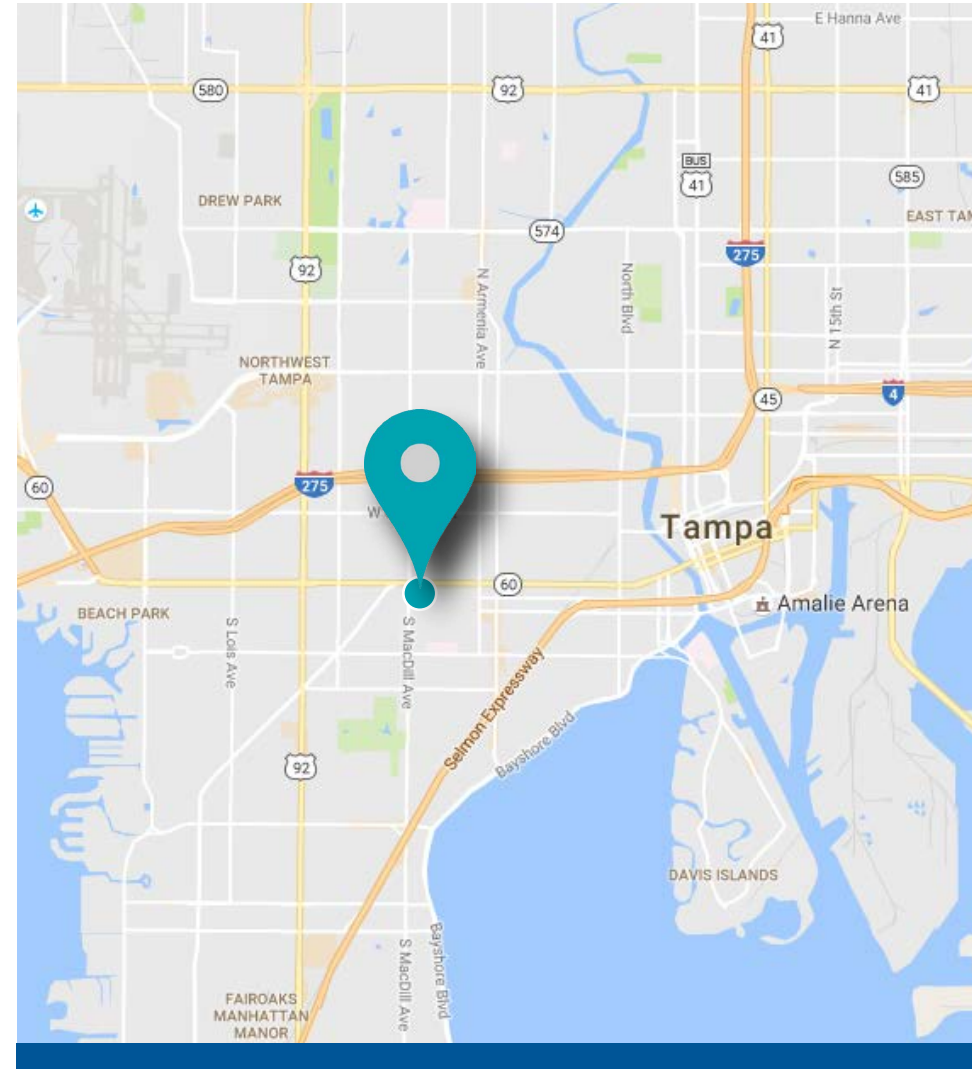
This new building is located just one block south of Kennedy Blvd. on S. MacDill Ave. behind the Bank of America Branch and surrounded by other medical groups.

By locating your Practice here, you will benefit by:

- Being in a Brand New Class A medical building in a market with limited options
- Have the ability to design your space the way you want to and to current standards
- Better parking than any other facility in the area

2016 Summary	5 Minutes	10 Minutes	15 Minutes
Population	31,434	117,289	286,161
Households	13,385	51,914	117,654
Families	6,086	24,766	63,768
Average Household Size	2.20	2.17	2.38
Owner Occupied Housing Units	6,150	24,680	55,488
Renter Occupied Housing Units	7,235	27,234	62,166
Median Age	35.4	38.3	37.5
Median Household Income	\$53,418	\$53,207	\$43,434
Average Household Income	\$83,819	\$87,464	\$70,116

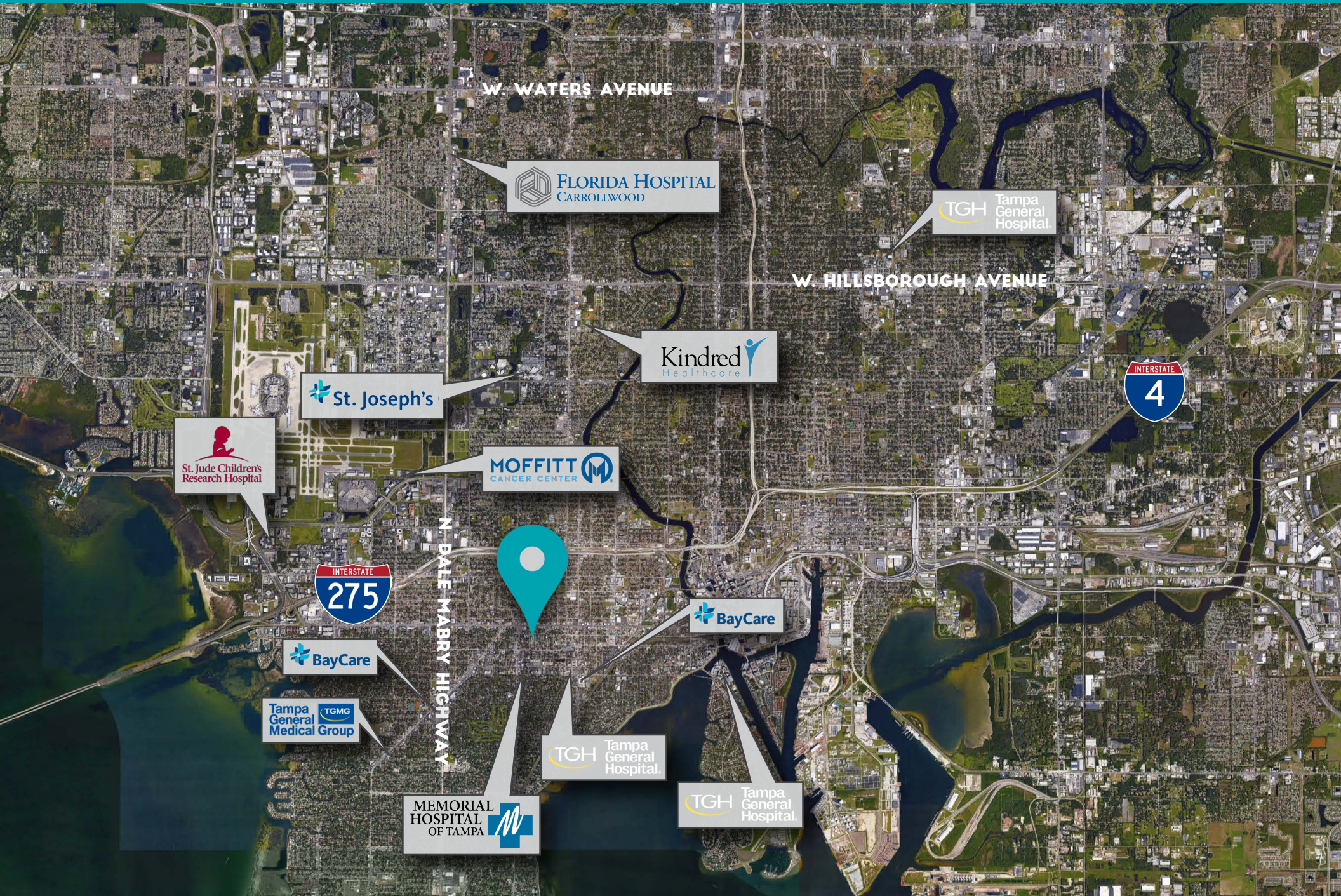
2021 Summary	5 Minutes	10 Minutes	15 Minutes
Population	33,614	125,394	303,851
Households	14,337	55,597	124,748
Families	6,440	26,088	66,790
Average Household Size	2.20	2.17	2.38
Owner Occupied Housing Units	6,470	25,847	57,776
Renter Occupied Housing Units	7,867	29,750	66,971
Median Age	36.3	39.0	38.2
Median Household Income	\$60,082	\$59,988	\$50,278
Average Household Income	\$91,460	\$94,895	\$76,209



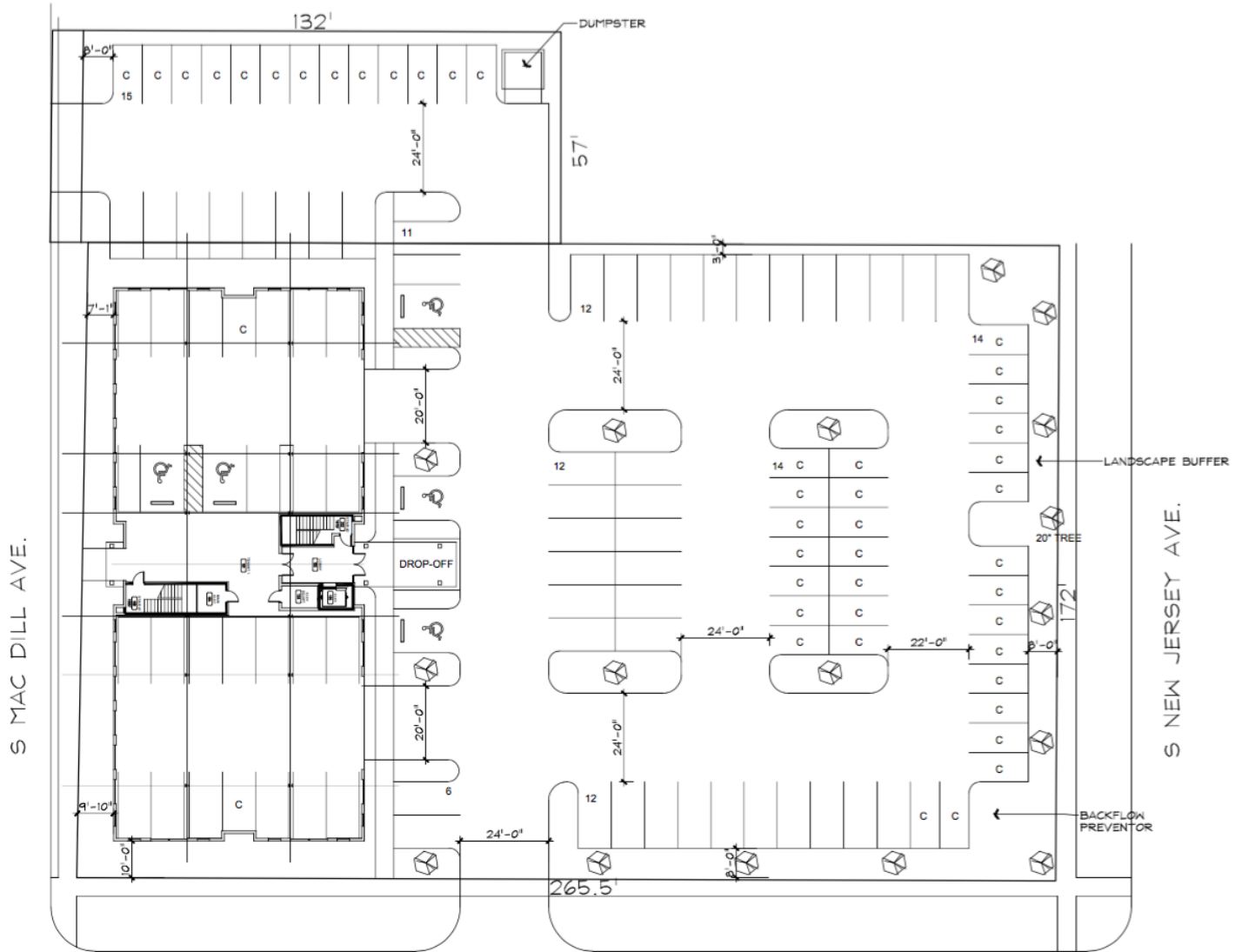
The Team

This brand new, state-of-the-art medical office building is brought to you by Equity LLC, a full service Healthcare Real Estate firm specializing in development, construction, real estate and property management services for their Client's.

COMING SOON! NEW SOUTH TAMPA MEDICAL OFFICE SPACE
110 S. MACDILL AVENUE, TAMPA, FL 33609



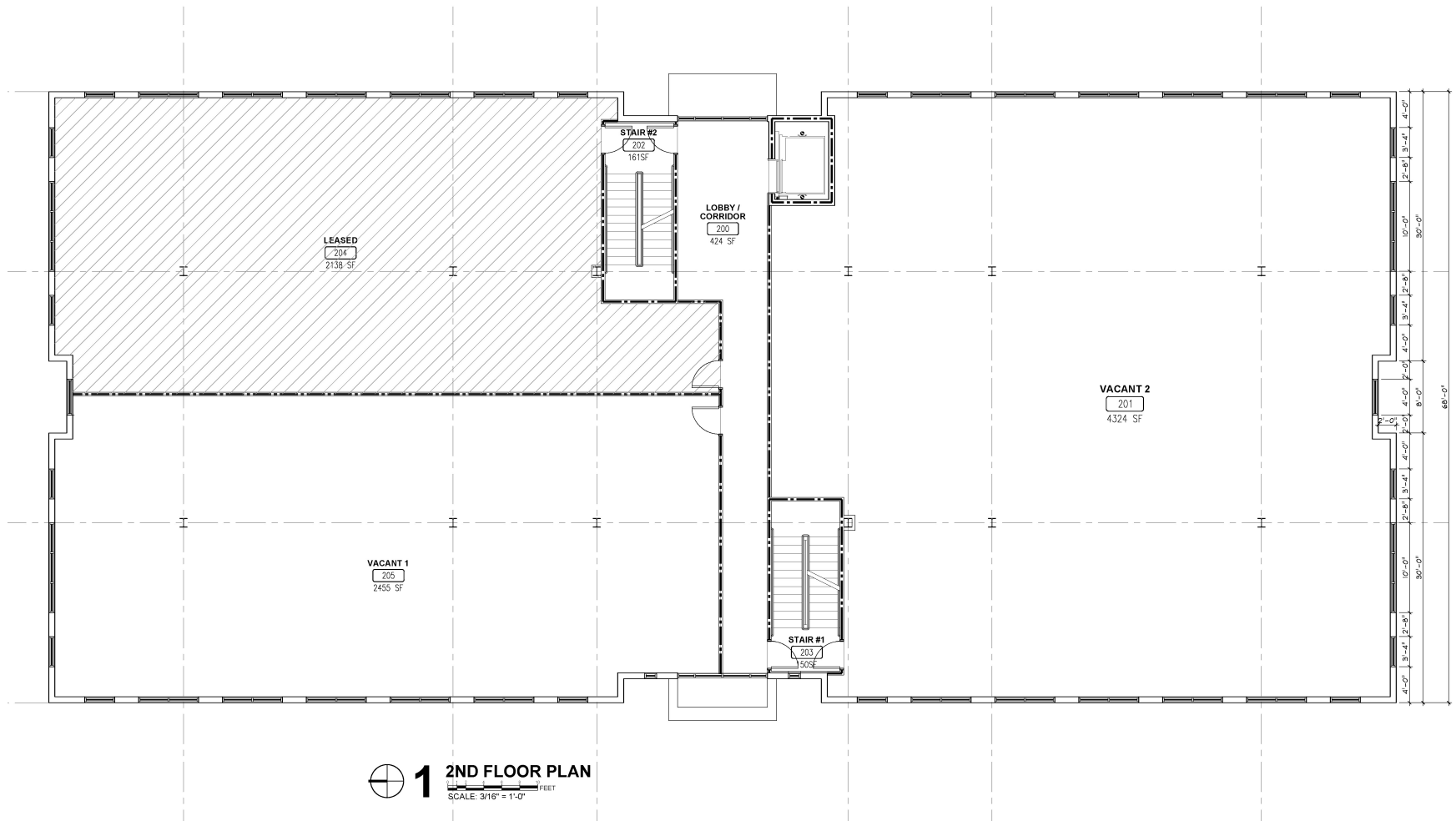
Site Plan



Floor Plan | Second Floor

Vacant 1 – 2,610 RSF

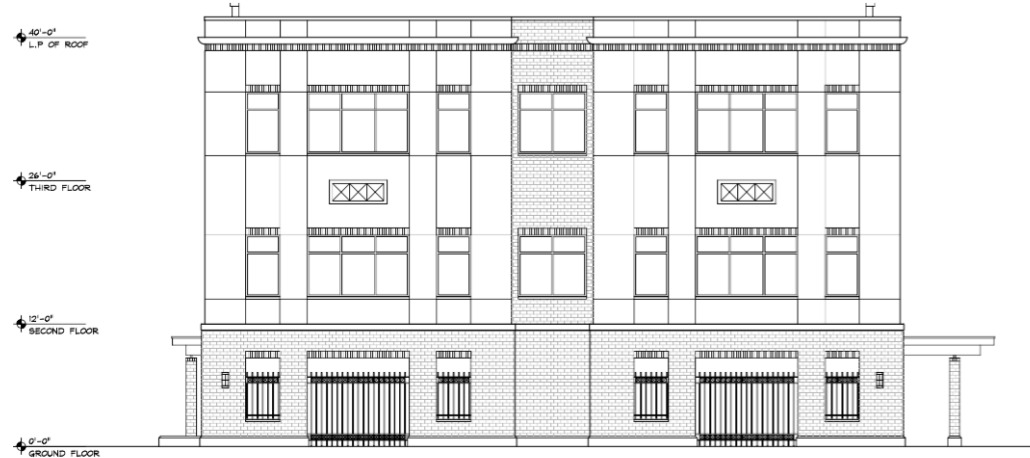
Vacant 2 - 4,616 RSF



Elevations



1 WEST ELEVATION
SCALE: 3/16" = 1'-0"



2 SOUTH ELEVATION
SCALE: 3/16" = 1'-0"

Elevations



1 EAST ELEVATION
SCALE: 3/16" = 1'-0"



2 NORTH ELEVATION
SCALE: 3/16" = 1'-0"

COMING SOON! NEW SOUTH TAMPA MEDICAL OFFICE SPACE
110 S. MACDILL AVENUE, TAMPA, FL 33609

W. KENNEDY BLVD.

For more information contact
CARLETON D. COMPTON, CCIM | VP Brokerage
O: 813-490-9812 | C: 813-789-7729
CCOMPTON@EQUITY.NET

**CLICK HERE TO TO SUBMIT
A LETTER OF INTEREST**