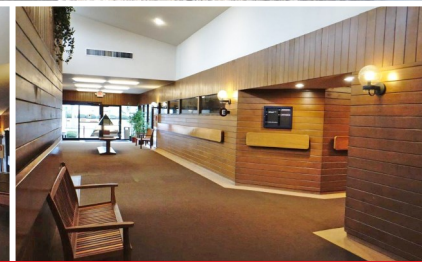
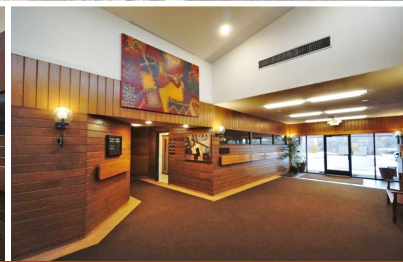
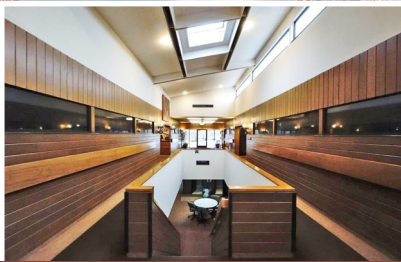
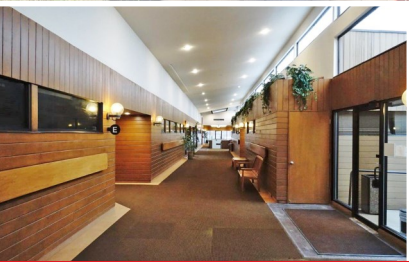


FOR SALE OR LEASE

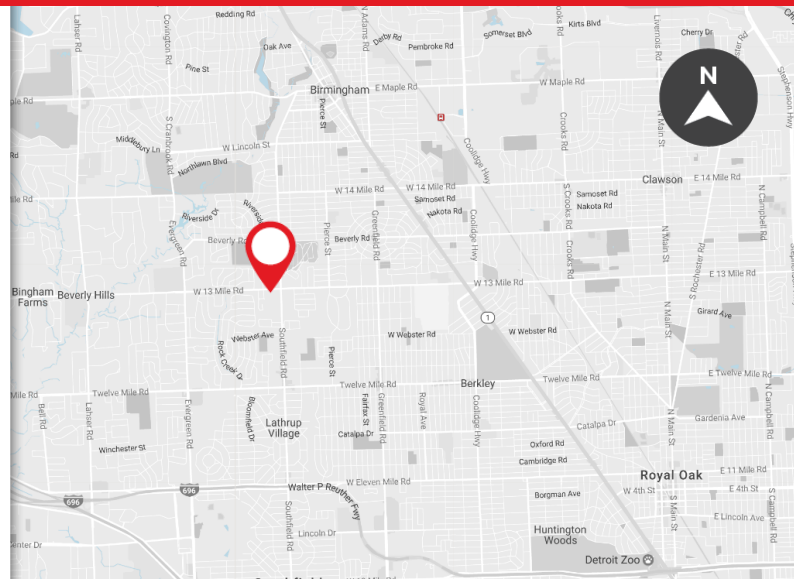
BEACON HILL MEDICAL CENTER
18161 W 13 MILE ROAD
SOUTHFIELD, MICHIGAN



Please visit: www.friedmancre.com/beacon-hill

PROPERTY FEATURES:

- ±23,256 SF medical office building
- Current occupancy is at 62%
- Value-add opportunity
- Surrounded by densely populated and established upper-middle income neighborhoods
- Ample parking for medical uses with a ratio of almost 9 per 1,000 SF of rentable area
- Built as condominium style with each pod having its own basement
- Situated along main east/west corridor serving the area which leads to the Royal Oak campus of William Beaumont Hospital
- Well maintained with recent upgrades to the building exterior
- Situated on a ±2.6 acre parcel
- No set asking price—TBD by market



FOR MORE INFORMATION PLEASE CONTACT:

JORDAN FRIEDMAN
jordan.friedman@freg.com

RICK TABBI
rick.tabbi@freg.com

248.324.2000

OFFICE eCODE 814