



3709 N HIGH ST

Columbus, OH 43214

LEASE



LEASE RATE **\$14.00 SF/YR**

OFFERING SUMMARY

Available SF:	2,400 SF
Lease Type:	NNN
CAM / SF:	\$3.00
Lot Size:	0.22 Acres
Year Built:	1920
Building Size:	5,000 SF
Renovated:	1960
Zoning:	C-2 Office Commercial District

LOCATION OVERVIEW

This property is located in the Whetstone neighborhood of Columbus, Ohio. The community includes a 136-acre park with a recreation center. It is close to retail stores, restaurants, medical facilities, and other local amenities.

PROPERTY HIGHLIGHTS

- Well-Located Tudor Style Building
- Excellent Visibility in the Heart of Clintonville
- Off-Street Parking
- Signage
- Well Configured for Dentists, Doctors, Chiropractors, or Sales Office
- Waiting Room

CBC-ASPIRE.COM

Bill Davis
614.588.7561
bdavis@cbc-aspire.com
OH #SAL.2005016766

Tom Velalis
614.354.6556
tvelalis@cbc-aspire.com



**COLDWELL
BANKER
COMMERCIAL**

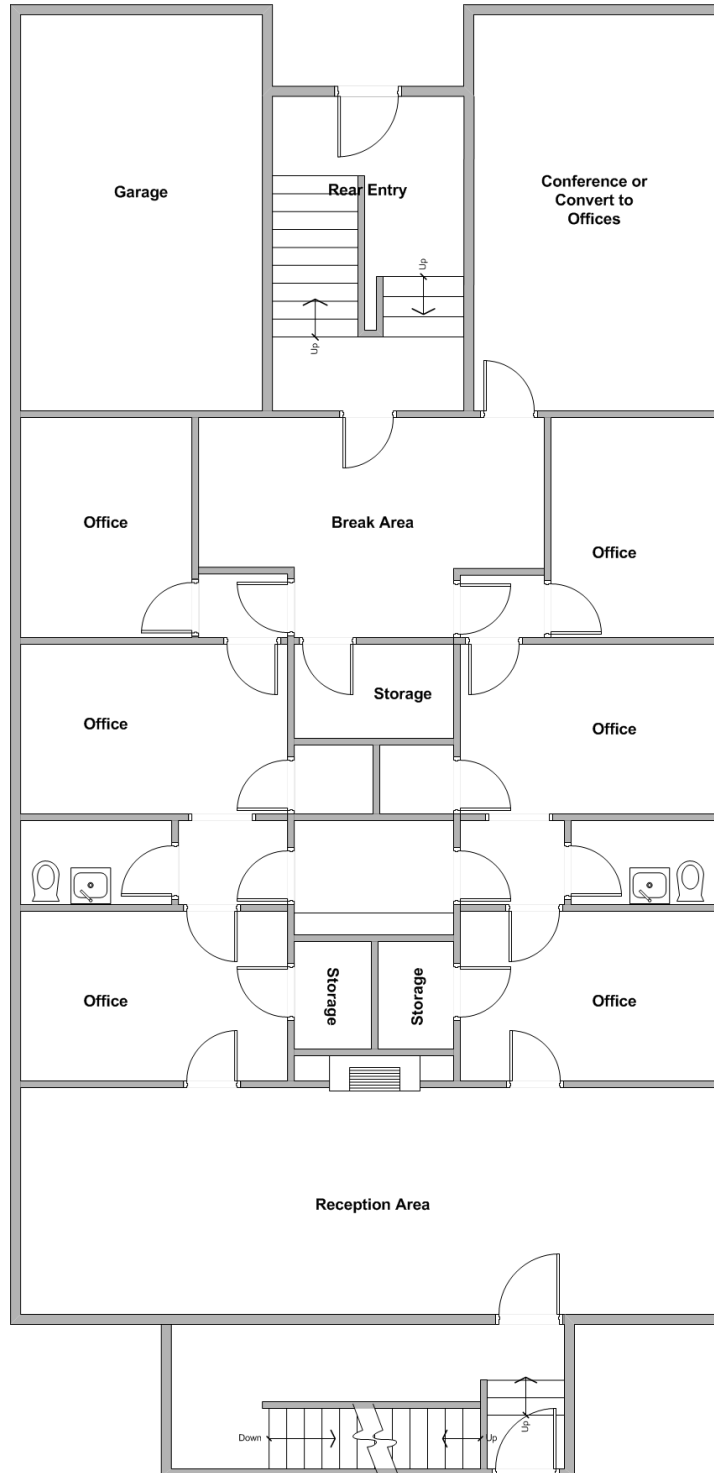
ASPIRE REALTY SERVICES



3709 N HIGH ST

Columbus, OH 43214

LEASE



CBC-ASPIRE.COM

Bill Davis
614.588.7561
bdavis@cbc-aspire.com
OH #SAL.2005016766

Tom Velalis
614.354.6556
tvelalis@cbc-aspire.com



**COLDWELL
BANKER
COMMERCIAL**

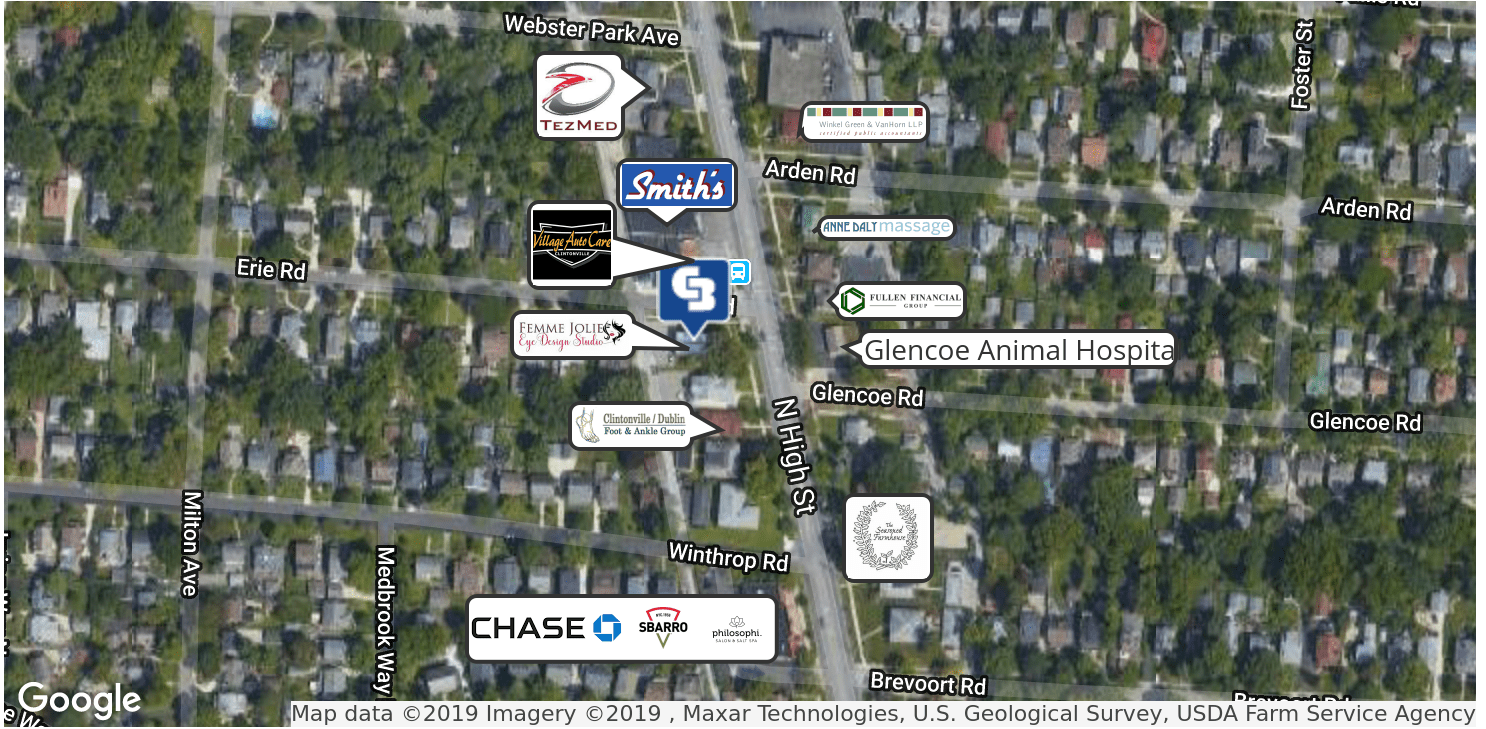
ASPIRE REALTY SERVICES



3709 N HIGH ST

Columbus, OH 43214

LEASE



Map data ©2019 Imagery ©2019 , Maxar Technologies, U.S. Geological Survey, USDA Farm Service Agency



CBC-ASPIRE.COM

Bill Davis
 614.588.7561
 bdavis@cbc-aspire.com
 OH #SAL.2005016766

Tom Velalis
 614.354.6556
 tvelalis@cbc-aspire.com

