

PROFESSIONAL OFFICES & LIGHT MEDICAL SPACES AT NE MLK & RUSSELL

Mt. Rushmore Building 333 NE Russell Street, Portland OR 97212

FOR LEASE



This charming mixed-use building offers you all the best parts of a bustling, energetic neighborhood. Perched on a busy street corner with plenty of foot traffic, the cozy office suites provide unparalleled visibility and a charming, old-fashioned exterior. Tenants of the Rushmore Building enjoy bright, south facing windows, a furnished lobby, on-site guest parking and ADA parking, and a secure 24/7 building access system. You'll also have access to optional basement storage space for keeping things organized.

Tricia Anderson

tricia@northrimpx.com | 503.525.1927



northrimpx.com

819 SE Morrison Street, Ste 110, Portland OR 97214 | 503.525.1925
Matthew Schweitzer | matt@northrimpx.com | 503.381.3134

PROFESSIONAL OFFICES & LIGHT MEDICAL SPACES AT NE MLK & RUSSELL

Mt. Rushmore Building 333 NE Russell Street, Portland OR 97212

FOR LEASE

Walk Score



"Walker's Paradise"

Transit Score



"Good Transit"

Bike Score



"Biker's Paradise"

Upper Offices



Property Details

- 2nd Floor private offices with operable windows
- Furnished, common waiting area
- 24/7 Building access system with call-box
- On-site patrolled parking for tenants and guests
- Optional basement storage available
- Retail and restaurant spaces on the ground floor

Location

- Close-in location on corner of NE MLK and Russell
- Easy access to I-5 and I-84
- Neighbors include the Wonder Ballroom, Nike Factory Outlet, Bunk Sandwiches, Merkato Ethiopian Food Store, and Ox

Demographics (within 1 mile; for 2018)

- Population: 25,291
- Projected Population: (2023) 28,063
- Households: 11,968
- Median Household Income: \$64,036
- Projected Median Household Income: (2023) \$72,250
- Median Age: 37.2

Tricia Anderson

tricia@northrimpx.com | 503.525.1927



northrimpx.com

819 SE Morrison Street, Ste 110, Portland OR 97214 | 503.525.1925

Matthew Schweitzer | matt@northrimpx.com | 503.381.3134



Virtual Tour
Suite 202

tinyurl.com/rushmore-202



PROFESSIONAL OFFICES & LIGHT MEDICAL SPACES AT NE MLK & RUSSELL

Mt. Rushmore Building 333 NE Russell Street, Portland OR 97212

FOR LEASE

Tricia Anderson

tricia@northrimpx.com | 503.525.1927



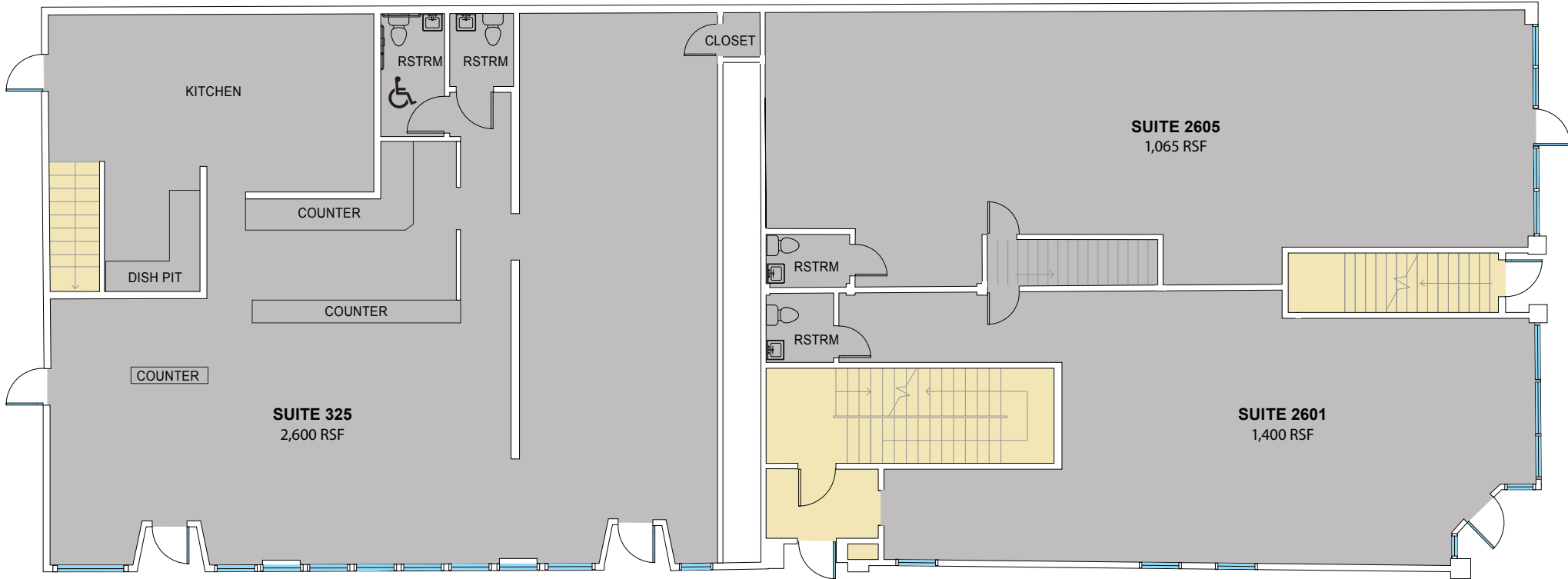
northrimpx.com

819 SE Morrison Street, Ste 110, Portland OR 97214 | 503.525.1925

Matthew Schweitzer | matt@northrimpx.com | 503.381.3134

FLOOR PLAN

1st Floor



PROFESSIONAL OFFICES & LIGHT MEDICAL SPACES AT NE MLK & RUSSELL

Mt. Rushmore Building 333 NE Russell Street, Portland OR 97212

FOR LEASE

Tricia Anderson

tricia@northrimpx.com | 503.525.1927



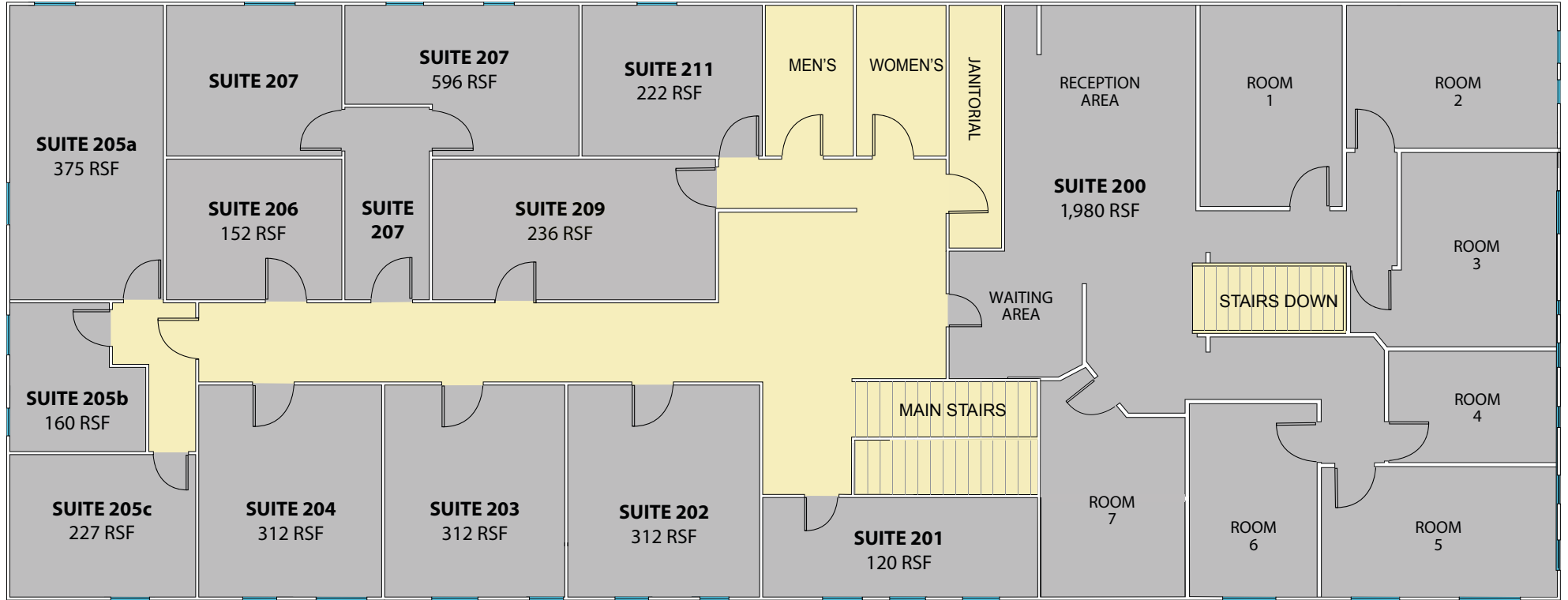
northrimpx.com

819 SE Morrison Street, Ste 110, Portland OR 97214 | 503.525.1925

Matthew Schweitzer | matt@northrimpx.com | 503.381.3134

FLOOR PLAN

2nd Floor



PROFESSIONAL OFFICES & LIGHT MEDICAL SPACES AT NE MLK & RUSSELL

Mt. Rushmore Building 333 NE Russell Street, Portland OR 97212

FOR LEASE

Tricia Anderson

tricia@northrimpx.com | 503.525.1927



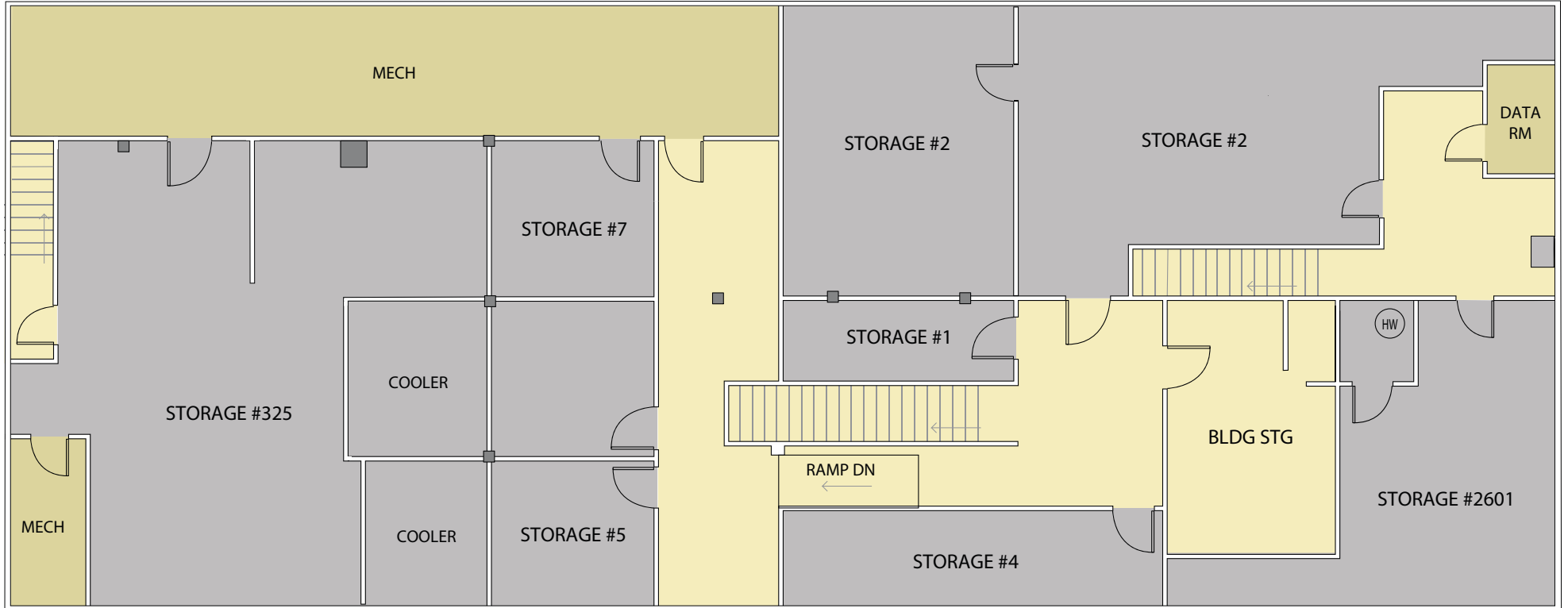
northrimpx.com

819 SE Morrison Street, Ste 110, Portland OR 97214 | 503.525.1925

Matthew Schweitzer | matt@northrimpx.com | 503.381.3134

FLOOR PLAN

Basement



PROFESSIONAL OFFICES & LIGHT MEDICAL SPACES AT NE MLK & RUSSELL

Mt. Rushmore Building 333 NE Russell Street, Portland OR 97212

FOR LEASE

Tricia Anderson

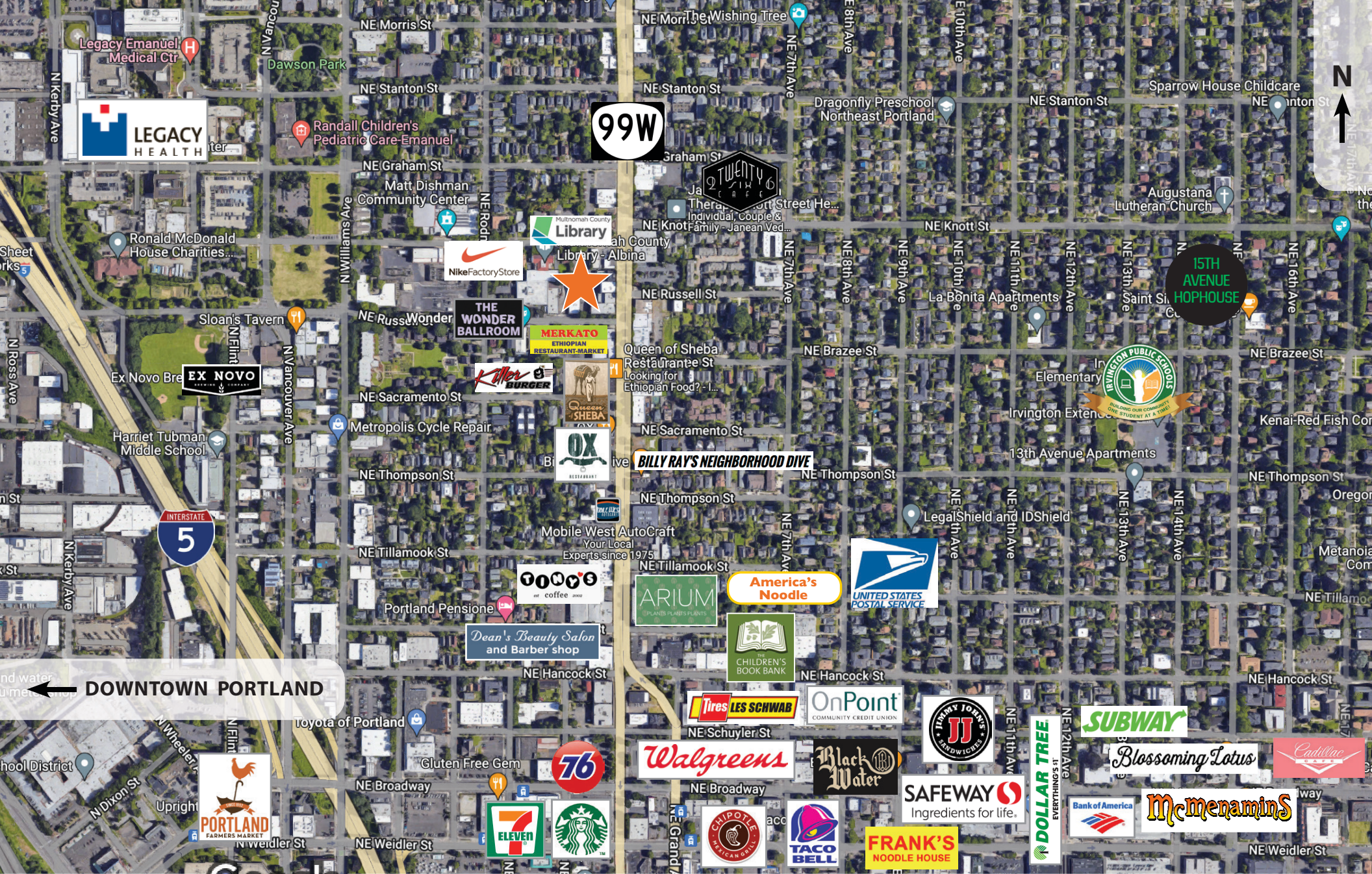
tricia@northrimpx.com | 503.525.1927



northrimpx.com

819 SE Morrison Street, Ste 110, Portland OR 97214 | 503.525.1925

Matthew Schweitzer | matt@northrimpx.com | 503.381.3134



15TH AVENUE HOPHOUSE

← DOWNTOWN PORTLAND

PROFESSIONAL OFFICES & LIGHT MEDICAL SPACES AT NE MLK & RUSSELL
 Mt. Rushmore Building 333 NE Russell Street, Portland OR 97212

FOR LEASE

Tricia Anderson

tricia@northrimpx.com | 503.525.1927



northrimpx.com

819 SE Morrison Street, Ste 110, Portland OR 97214 | 503.525.1925
 Matthew Schweitzer | matt@northrimpx.com | 503.381.3134